

GOODRICH SOLUTIONS

# FLOORING

LOOM<sup>+</sup>



Goodrich Global  
SINCE 1983

WOVEN VINYL



*We've got you  
Covered!*

**NOXWOVENVINYL** LVT

2021 - 2024

COMMERCIAL | HOSPITALITY | RESIDENTIAL | EDUCATION

# The LOOM+ TECHNOLOGY

## Proven Innovation

Distinguished NOX Ecotecture® Multi-Layer Property  
featured with innovative functionality and safety, proven in more than 50 countries over 20 years



### Safe

Certified non-toxic, phthalate-free, and fiberglass-free fabric

### Quick

Quick & Easy ECOLAY® installation without glue

### Easy

Minimal cleaning time & low maintenance

### Silent & Soft

Soft surface absorbing sound

### Non-Slip

Slip-resistance with woven

### Colorfast

Colorfast properties retain gorgeous original colors over time



### Clean & Tough



- + The first & only in woven flooring with ECOPROTEC® ceramic PU coating treatment (Anti-Bacterial)
- + Strong enough for heavy commercial use



### Dimensional Stability & Consistent thickness



- + The most reliable NOX Ecotecture® Multi-Layer Property
- + Consistent product thickness by patterns for mix & match with different patterns

### Fray-Proof



- + Clean-cut finishing for preventing fraying even when cutting tiles during installation



# LOOM+ Technical Data

## 1. Size & Packing

Size(mm)	Thickness(mm)	Pcs/Box	m <sup>2</sup> /Box	Kg/m <sup>2</sup>
250x1000	3	16 pcs/box	4m <sup>2</sup>	5.0

## 2. Test Result

Test Item		Standard	LOOM+
Level of use		EN 685	33
Fraying		EN 1814	Frayproof
Thermal resistance		ISO 8302	0.02m <sup>2</sup> K/W
Castor chair resistance		EN 985	No damage
Dimensional stability		ISO 23999 EN 986	≤ 0.10% ( Norm ≤ 0.25% ) Passed
Fire resistance		EN 13501-1	Bfl -s1
Indoor air quality			Low VOC (floor score certified)
Underfloor heating		EN 12524	Suitable
Light fastness		ISO 105-B02	≥ 6
Slip resistance		DIN 51130 EN 13893	R11 DS
Flexibility		ISO 24344	Passed
Impact sound insulation		ISO 10140-3	9dB
Body Voltage		EN 1815	≤ 2KV
Squareness & Straightness		ISO 24342 ASTM F2055	No deviation ≤ 0.01 in
Residual indentation		ISO 24343-1 ASTM F1914	≤ 0.1mm < 8%
Resistance to chemicals		ISO 26987 ASTM F925	No Defects No Defects
Warranty Wear Limited		Commercial Residential	10 years 15 years
SGBC			Excellent

## 3. Caution

Condition in at least 19°C or the normal temperature of the room where the product is to be laid, for at least 48 hours before installing. Cartons must be stacked less than 5 high and tiles removed 30 minutes before use. The site conditions must be maintained during installation and for at least 48 hours after completion. NOX Corporation will not accept claims where these instructions have not been followed.

## 4. Certificate



Please visit [www.noxglobal.com](http://www.noxglobal.com) for detailed installation / maintenance guides and technical information.

Reinvent Spaces with

# LOOM+ PLAY!

INSTALLATION CONCEPT GUIDE

Your flat environments will become more stylish with unlimited design options of LOOM+. Why don't you enjoy creating your own design by mixing & matching different patterns and colors?

# STOCKING



FQ2401



FQ2402



FQ2403



FQ2502

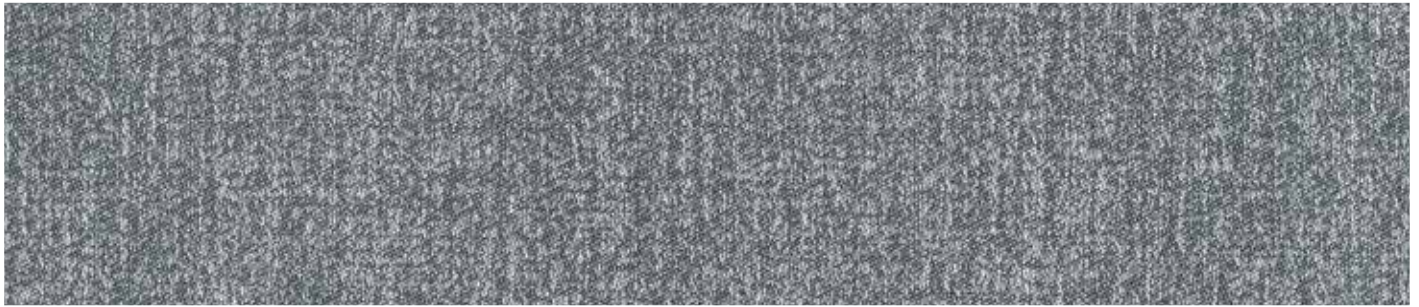


FQ2505

# STOCKING



FQ2506



FQ2601



FQ2603



FQ2604



FQ2605

GOODRICH SOLUTIONS  
**FLOORING**

**LOOM<sup>+</sup>**

**WITH  
GOODRICH,**

Your habitat becomes

A gallery of  
Your **self-expressions;**

A canvas for  
Your **creativity;**

A space for  
Your **soul;**

A showcase of  
Your **taste for life;**

Stay Connected - [www.goodrichglobal.com](http://www.goodrichglobal.com) | [info@goodrichglobal.com](mailto:info@goodrichglobal.com)

 /Goodrich.Global.Singapore

 /goodrich\_global

 /GoodrichGlobal

 /GoodrichChina

 /GoodrichGlobal

 /goodrichglobal

 /GoodrichHQ

 /Goodrich\_Global

SINGAPORE [HQ] | CHINA | HONG KONG (CHINA) | INDIA | INDONESIA | MALAYSIA | MYANMAR | PHILIPPINES | THAILAND | UNITED ARAB EMIRATES | VIETNAM

Copyright © 2021 Goodrich Global. All rights reserved.