

GOODRICH ANTIMICROBIAL



Goodrich Global
SINCE 1989

WALLCOVERING | FABRIC | CARPET | FLOORING



CATALOGUE

2020 - 2021

COMMERICAL | EDUCATION | HEALTHCARE | HOSPITALITY | RESIDENTIAL

INDEX

J•Josephson	1
Kleen Sanitize	5
Tuntex Carpet Tiles	9
Concertex	13
Englisch Dekor	17
Shield Leather	21
Armstrong Homogeneous Flooring	25
NOX Luxury Vinyl Tiles	29

INTRODUCTION ANTIMICROBIAL

The definition of antimicrobial is substances that are active against microbes, aka. microorganisms which include bacteria, viruses and fungi such as mold and mildew especially those that carry bacteria that can cause diseases and fermentation.

Antimicrobial agents such as antiseptic germicide and alcohol-based hand sanitizers prevent and slow down the spread of microbes.

Antimicrobial products, or products that have gone through antimicrobial treatment, kill or decline the spread of microorganisms. Antimicrobial products are used to treat or prevent various diseases that affect all walks of life and keep our environments' hygienic standards.



Exclusivity: All Regions

For more information, scan
QR Code here!



<div><div><div>✓</div><div>✓</div></div><div>NO CHANGE in color or appearance</div><div>Tested with 300+ scrubbing cycles Gardner method, standardized bristle brush</div></div>		Anti-Microbial Protection	Hospital-grade Disinfectants				Harshest				
		No growth of bacteria, viruses or fungi	Quats (Virex, other)	Diluted bleach (1:10)	Hydrogen Peroxide 3%	70% Isopropyl Alcohol	Undiluted Bleach	Mineral Spirits	Undiluted Chlorine Dioxide	95% Grain Alcohol	Battery Acid
<div><div>vycon</div><div>SYMPHONY</div></div>	Type II Wallcovering	✓	✓	✓	✓	✓					
<div><div>INVISICAP</div><div>complete chemical protection</div></div>	Clear cap film added	✓	✓	✓	✓	✓	✓	✓	✓	✓	✓

INVISICAP WALLCOVERING

SPECS/BENEFITS

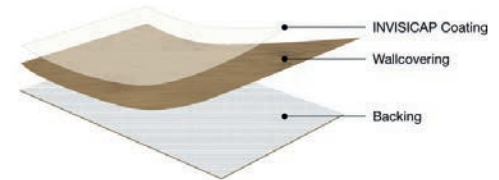
As the COVID-19 era drives the urgency for more aggressive cleaning and disinfecting programs across all commercial interiors, many wall finishes will not tolerate repeated application of harsh chemical disinfectants. Into this void, Goodrich introduces an effective new solution.

Applying InvisiCap PVF film to Goodrich's industry-leading designs will ensure complete chemical protection for your wallcovering, while preserving the nuanced, natural looks of silks, linens, woven textures, and other designs.

Ordered as a custom run, with normal lead times, InvisiCap protects against all cleaning and disinfecting chemicals, in any concentration. When a facility needs natural-looking wallcovering with no cleaning limitation, specify InvisiCap on almost any Vycon & Symphony pattern.

PERFORMANCE

- High Visual Clarity
- NO CHANGE from disinfecting with any chemical
- Impact strength
- Light emboss: 28 in-lbs (Gardner drop dart)
- Elevated Abrasion



SYMPHONY

BRAND / COLLECTION



Symphony® Encore showcases dramatic statement textures, rich specialty patterns, and revitalized color lines across timeless silks, linens and other classics. A new sampling format features a forward-facing box and a simplified card layout making the brand more compelling than ever.



Vycon's EVOLUTION presents a portfolio rich in classic wovens, statement designs, premium patterns and freshened color lines. A single, forward-facing box and simplified bi-fold card design showcases 45 patterns and over 670 colors, enhancing this exceptional brand.

KLEEN-SANITIZE

INTRODUCTION



Exclusivity: All Regions

For more information, scan
QR Code here!



Kleen-Sanitize is a nylon mat allows you to sanitize your shoes and trap dust when one steps onto it. Ideal for entrances of healthcare, commercial, hospitality and residential premises.

Shoes can carry various kinds of dirt, mold, bacteria and viruses with you wherever you roam. Your shoes could be a major carrier of Coronavirus. Why not use Kleen-Sanitize Floor Mat and reduce the risks of contacting illness and viruses?

KLEEN-SANITIZE

SPECS/BENEFITS

Material of mats

100% Nitrile rubber (NBR), thickness 3.7 mm
100% Solution dyed nylon

Material of absorbent pad (refill)

Type A: Needle punch fabric - PET &PP (thickness approx. 5 mm)
Type B: Non-woven fabric - PET (thickness approx. 2 mm)

Size

Finished	: 80 X 150 cm (S)	: 90 X 200 cm (M)	: 90 X 240 cm (L)
Sanitizing footbath (W x H x D)	: 70.5 x 39.5 x 0.4 cm	: 70.5 x 80 x 0.4 cm	: 70.5 x 120 x 0.4 cm
Nylon fabric (W x H)	: 70 x 97 cm	: 70 x 106 cm	: 70 x 106 cm
Border	: 5 cm	: 5 cm	: 5 cm
Absorbent Pad	: 39 x 69 cm	: 69 x 78 cm	: 69 x 118 cm

Capacity of Sanitizing Footbath

Dust collecting

Total height

Total weight

: approx. 0.5L	: approx. 1L	: approx. 1.5L
: approx. 600g/sqm		
: approx. 13 mm		
: approx. 6 kg/pc	: approx. 7.5 kg/pc	: approx. 9 kg/pc

Colour

Nylon fabric
Absorbent pad

: Black Brown*
: Type A: Needle Punch - Brown*
: Type B: Non-woven - Black
*other colors are on demand with minimum quantity 10 pcs

Surface Flammability High-Traction

: Pass ASTM D 2859 (> 1 inch)
: Pass NFSI 101-C (Slip and Trip resistance on clean and dry floor)

KLEEN-SANITIZE

DETAILS

SHOES **SANITIZE** & DUST TRAP FLOOR MAT



Absorbent Pad

Fill sanitizer in Absorbent Pad

Step 2-3 times on
Absorbent Pad

Wipe dry and remove dust

Features

2 in 1 property

Step 1: Clean the shoes on Sanitizing Footbath

Step 2: Step on nylon mat to dry and remove dust before entry

- Scratch Resistant
- No PVC

Applications

- Door Entrances
- Cleaning Rooms
- Convenience Stores
- Hospitals
- Hotels
- Kitchen
- Laundromats
- Office Buildings
- Restaurants
- Screening Points
- Shops
- Spa

Recommendations

- Clean and dry the floor before placing Kleen-Sanitize mat for better stay stable on the floor.
- Fill sanitizer in the footbath until absorbent pad is soaked approximately 0.5 - 1 liter.
- For absorbent pad : needle punch (Type A) place the ribbed surface on top.
- Refill sanitizer every 2-3 hours and depended on traffic.
- Clean and dry the Kleen-Sanitize mat and absorbent pad everyday for hygiene and life extension.
- If “Dettol” is applied, white stain may occur on the rubber.

Do not use sanitizer containing Sodium Hypochlorite (e.g. Haiter).

- Keep the floor and surrounding area dry while using to prevent slipping.

TUNTEX CARPET TILES

INTRODUCTION



Exclusivity: Singapore, Indonesia & Thailand

For more information, scan
QR Code here!



Tuntex carpet collections have :

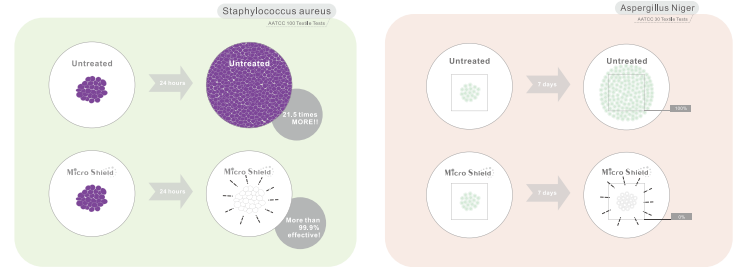
- U.S. Green Circle Recycled Certificate
- 15 Year Warranty on colourfastness
- 15 Year Fiber Loss Warranty from abrasive wear
- Passed the National Fire Protection Building Materials and test standards.
- Singapore Green Building Certified - Leader

TUNTEX CARPET TILES

SPECS/BENEFITS



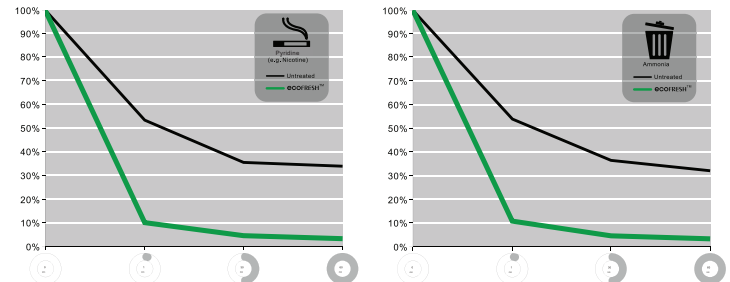
- Micro Shield is a treatment that has anti-microbial character.
- Micro Shield anti-microbial eliminates the growth of microorganisms and has outstanding mildew resistance.
- The treatment is built in between the top of the carpet (pile) and the thermoplastic backing and is durable through multiple shampoo cleanings.
- The outstanding characteristics of Micro Shield makes Tuntex carpet tiles with Micro Shield the ideal choice for a wide range of carpet installations including hotels, restaurants, offices schools, healthcare and residential care facilities.



Test results may vary under different environment.

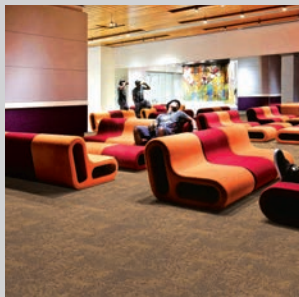


- Reduces Odors
- Freshens the Air
- Environmentally Friendly with no harmful chemicals
- Proprietary technology
- Self-Renewing
- Built into carpet and last through time and multiple cleanings. Embedded during manufacturing process.



TUNTEX CARPET TILES

DESIGNS/PATTERNS



T700G BIRD'S-EYE ON METRO



T702G A GLANCE OF RETRO



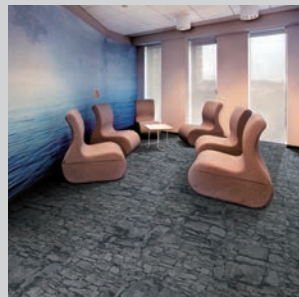
T706G CROSSING IN TIME



T707G SPACE CLOUD



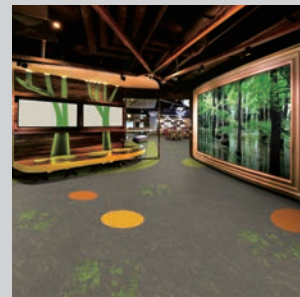
T708G COLOR DEW



T709G FLAGSTONE



T710G BASE



T711G BAMBOO



T712G BLOSSOM



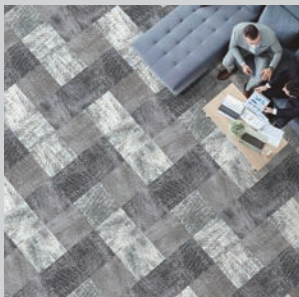
T717G SQ CLOUD



T718G WEAVE PLUS



T719G FREE FORM



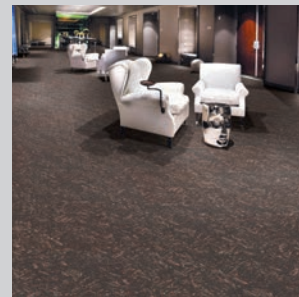
T723G 1933 SHANGHAI



T797G AQUA CODE



T798G SPLISH SPLASH



T799G CLIFF ART



Exclusivity: Singapore, China, Hong Kong(China), Indonesia, Malaysia, Philippines, Thailand & Vietnam

For more information, scan
QR Code here!



A collection designed to showcase the beauty in performance fabrics, Concertex introduces the spring 2020 Warp collection. Blurring the lines between coated fabrics and wovens, Concertex has literally warped the perception of performance products with the launch of the new collection.

CONCERTEX

SPECS/BENEFITS

Application	:Upholstery
Backing	:65% Polyester, 35% Cotton
Cleaning	:W/S, Bleach (10:1)
Content	:100% Phthalate Free Vinyl
Country of Origin	:South Korea
Finish	:Graffiti-Free® + Clearshield™
Flammability	:CA Bulletin 117-2013; UFAC/NFPA-260; IMO A652 (16) :8.2
Repeat	:3.377" H
Width:	52"

General Characteristics

- Abrasion:
- Colorfastness to Crocking: Grade 5 (AATCC 8)
- Colorfastness to Light: 200+ hours (AATCC-16)
- Meets all ACT Heavy Duty Performance Guidelines

Environmental

- Phthalate Free
- No added FR/Anti-Bacterial



CONCERTEX

DESIGNS/PATTERNS



ALTER



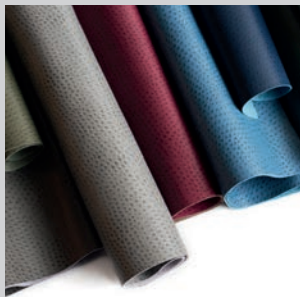
APEX



BONITA



DRESDEN



EMU



FLUX



HILDALGO



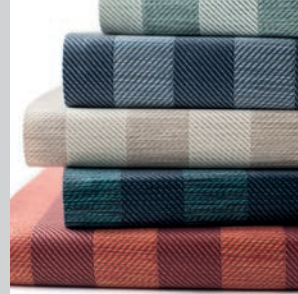
INTERLOCK



LYON



MINGLE



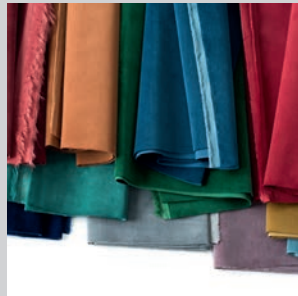
PARALLEL



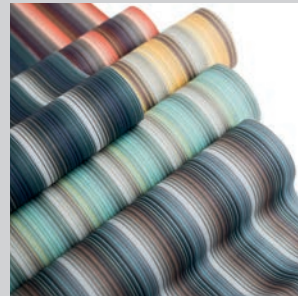
POLYNESIA



SKYE



SPECTRA



WARP



Exclusivity: Singapore, China, Hong Kong(China), Indonesia, Malaysia, Philippines, Thailand & Vietnam

For more information, scan
QR Code here!



Englisch Dekor focuses on the development and sale of flame retardant furnishing and upholstery fabrics. It offers a wide variety of contract textiles for semi-transparent room separators or large scale wall and ceiling coverings.

The collection of vibrant colours and stylish designs in floral, stripes and plains are suitable for upholstery of furniture and decorative throws for residential, hospitality and office projects.

Englisch Dekor fabrics are liquid impermeable and easy to clean with a wide array of colors and materials that can be mixed and matched to customise and match to your preferred upholstery styles and themes.

These upholstery fabrics are:

- Antimicrobial
- Breathable
- Easy maintenance
- Flame retardant
- Kind to the skin
- Stain repellent
- Washable
- Waterproof

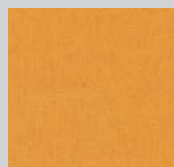




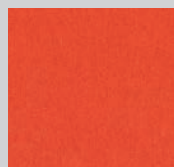
A3367-140



A3367-A3379-140



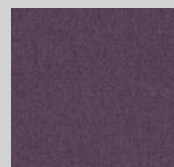
A3368-140



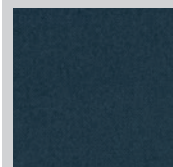
A3369-140



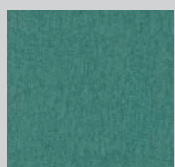
A3370-140



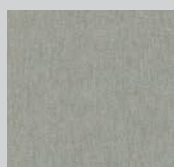
A3371-140



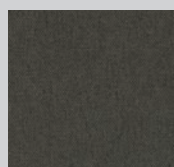
A3372-140



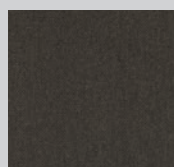
A3373-140



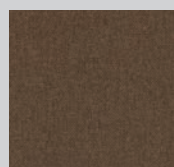
A3374-140



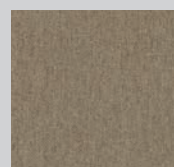
A3375-140



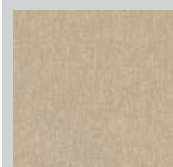
A3376-140



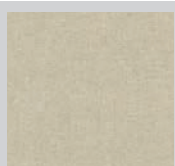
A3377-140



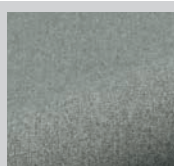
A3378-140



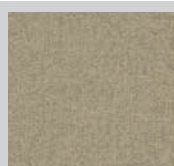
A3379-140



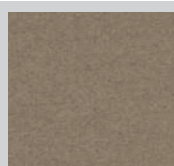
A3380-140



A3380-A3391-140



A3381-140



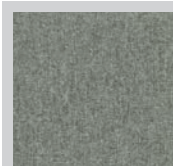
A3382-140



A3383-140



A3384-140



A3385-140



SHEILD LEATHERS

INTRODUCTION



Exclusivity: All Regions

For more information, scan
QR Code here!



ABOUT SHIELD LEATHERS

Performance Leather made of 100% Silicone, SHIELD Leathers redefine high performance fabrics through the best combination of leather textures and the superior advantages of silicone. It is inherently flame retardant and unlike polyurethanes (PU), silicone does not degrade from hydrolysis chemical. At the same time, it does not support microbiological growth.

In addition, SHIELD Leathers have been tested for high abrasion resistance with results of 200,000 double rubs (Wyzenbeek) and 130,000 rubs (Martindale).

This test method ensures fabric performance and durability, especially in high traffic areas. It is also highly resistant against stains such as ink, lipstick, coffee or wine stains, and betadine.

SHIELD Leathers boasts a versatile combination of vibrant and warm colours that attract the designer's eye. With innovative silicone technology, the Perfect collections are crafted with beautifully bold coloured fabrics.

SHIELD LEATHERS

SPECS/BENEFITS



100% Pure Silicone Coated Faux Leather

- Innovative combination of superior leather textures and silicone technology.
- Versatile and suitable for various applications which require heavy duty protection and durability.



Easy to clean

- Superior stain resistance to ink, coffee, wine, lipstick and betadine.
- Water-based cleaning solvents or mild detergent are suitable for quick cleaning.
- Bleach cleanable.



Highly Durable

- Inherent Flame Resistance according to the National Protection Association and International Maritime.
- High abrasion resistance as tested by US (Wyzenbeek 200,000 double rubs) and British (Martindale 130,000 rubs) standards.
- Scratch Resistant.
- Colour Fastness.
- Suitable for both outdoor and indoor usage.



Allergen-free

- Chemical-free.
- Skin friendly and allergen free.
- Anti-bacterial and anti-microbial.

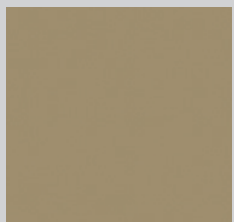


Eco-friendly

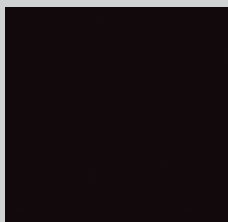
- Free of PVC, phthalates, solvent, DMF heavy metals or to other harmful materials.
- Complies with California 01350 VOC emissions standards and certified 'Gold' for indoor air quality by SCS Global Services.

SHEILD LEATHERS

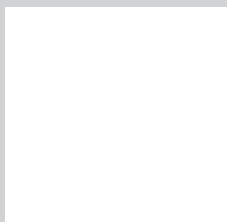
DESIGNS/PATTERNS



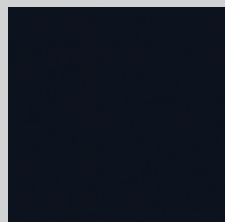
106-KHAKI



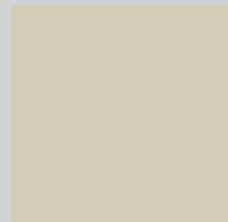
119-WINE



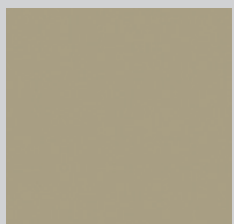
120-WHITE



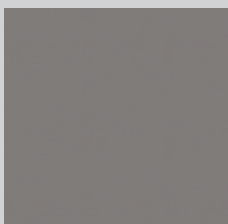
229-DENIM



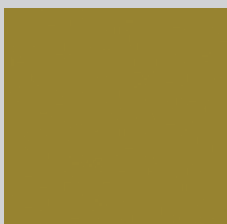
301-CREAM



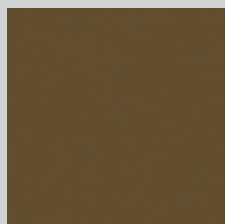
303-SANDSTONE



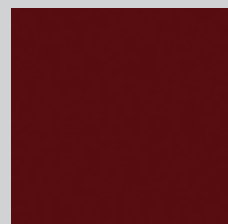
305-SMOKE



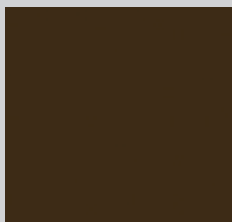
307-APRICOT



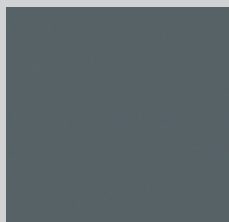
308-CARAMEL



309-RUBY



313-AMBER



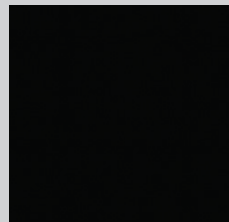
314-STONE



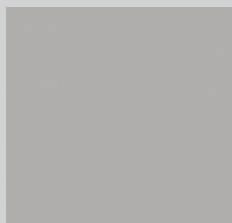
320-LAPIS



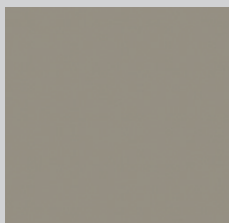
321-PINE



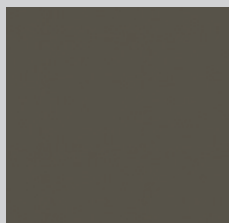
324-ONYX



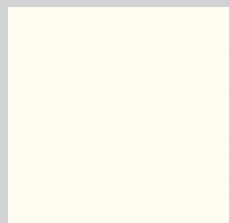
325-SALT



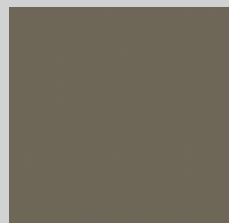
368-PEANUT



371-CEDAR



376-PEARL



927-VEGAS

*COMES WITH PEARLISED EFFECT

ARMSTRONG HOMOGENEOUS FLOORING

INTRODUCTION



Exclusivity: Singapore

For more information, scan
QR Code here!



Designed to provide beautiful, easy-to-clean and long-lasting floors, Medintone, Medintech Plus & Starlux Vinyl sheet floorings offers a spectrum of colors that provide a clean, fresh appearance; assist in wayfinding; and create comfortable, engaging spaces. Using cultured diamonds with all the properties of natural diamonds, our Diamond 10 Technology coating provides category leading scratch, stain and scuff resistance, making it a perfect solution for healthcare and educational environments.

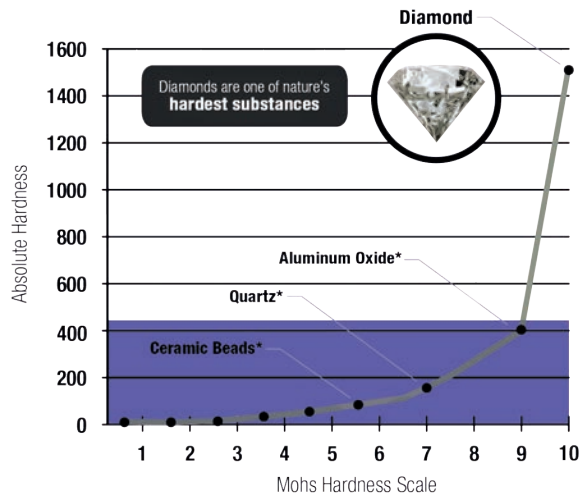
Setting the standard, Medintone, Medintech Plus & Starlux with Diamond 10 Technology coating provides the durability required in high-traffic commercial buildings, healthcare and educational settings. Featuring our patent-pending Diamond 10 Technology coating for an enhanced level of performance, Medintone, Medintech Plus & Starlux flooring can withstand heavy traffic and staining for a true low-maintenance floor. Coupled with the true through-pattern construction, Medintone, Medintech Plus & Starlux sheet resists abrasion and other wear while elevating aesthetics with a spectrum of colors, tones and patterns.

ARMSTRONG HOMOGENEOUS FLOORING

SPECS/BENEFITS



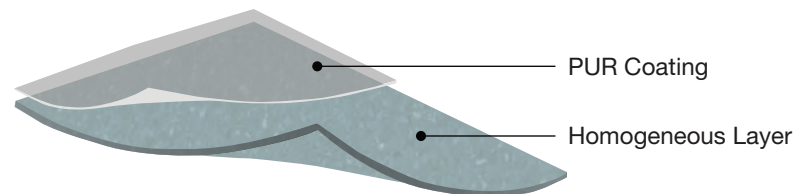
The Mohs scale of mineral hardness characterizes the scratch resistance of various minerals.



**The key ingredients in most competitive finishes*

REASONS TO SPECIFY HOMOGENEOUS VINYL SHEET:

- Diamond 10 Technology coating— cultured diamond-infused coating
- Abrasion and gouge resistance
- Chemical Resistant
- Easy maintenance
- Easy to heat weld and flash cove for spaces demanding superior infection control
- High durability wear layer
- Stain resistant
- True through-pattern construction



ARMSTRONG HOMOGENEOUS FLOORING

DESIGNS/PATTERNS



MEDINTECH PLUS

Single layered, homogenous vinyl sheet flooring with a 'T' wear resistance for lasting performance.

Available in 36 stunning shades and Diamond 10 coating for easy maintenance.

Made of 100% virgin vinyl, no heavy metals used.

Specially used in sterile and aseptic areas.



MEDINTONE

Medintone provides a full range of color selection, across soft neutral colors and bright colors jumping, this product perfectly guides passengers' flow, but also create attractive learning environment. These colors are designed to make the vision of indoor space achieve a unified effect. Medintone improves the overall beauty of education and medical space



PASTELL

Pastell fits in multiple applications like electronic manufacturing facility, research Laboratories, operation rooms, equipment rooms, access floor system (including raised floors and computer rooms).

Permanent anti-static.

Conductivity in perpendicular direction is more stable.

Triboelectric voltage less than 100 V.



STARLUX

Starlux sheet flooring provides pleasing chip visual with TRUESHIELD 2.0 technology coating. The matching design of plain colors and bright colors make it well-suited for kinds of environments. Starlux is resistant to stain and easy to clean, super scratch resistance, and more durable, which brings high-performance of flooring solutions to customers.

NOX LUXURY VINYL TILES

INTRODUCTION



Exclusivity: Singapore, Malaysia & Indonesia

For more information, scan
QR Code here!



Rooted in a chemical engineering company, NOX has built its core expertise in producing and processing various resin compounds for application to consumer and industrial goods for over 50 years. NOX's know-hows fully cover the LVT manufacturing process, from raw materials to production systems.

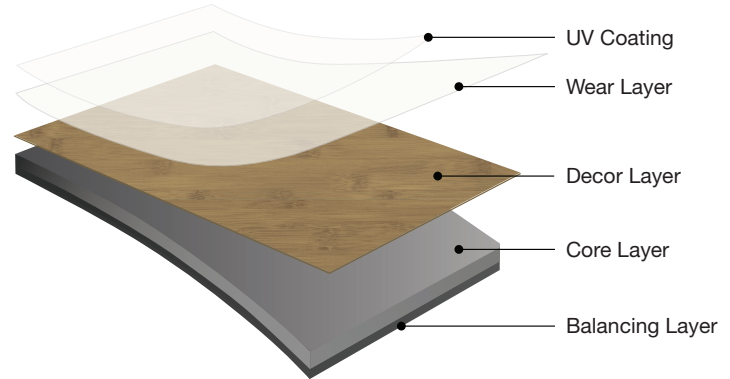
Since 2000, NOX has been operating the world's first and only IVP (Integrated Vertical Production) system, producing and integrating the multiple layers that consist LVT. Further, NOX's unique EMT™ Core (multi-layer structure method) and EPT™ Shield (premium surface coating) technologies have served as the foundation for innovation for both PVC and non-PVC synthetic resin products.

NOX acquired the Korean production facility of Hunter Douglas, a global window blind manufacturer, to become the world's first IVP manufacturer of woven tiles. NOX plans to expand its business into the woven-living interior field, such as carpet, rug and mat.

Global flooring companies have chosen NOX as their partner for many years. With their deep trust and full support, NOX and its partners have seen unprecedented growth. That NOX is a reliable partner who can provide stable support is evident in the fact that NOX is one of the world's largest LVT manufacturers with an annual production of approximately 50 million m2. Through constant innovation, NOX will continue to grow significantly and become the new standard across the flooring industry worldwide.

ECOCLICK+ & ORCHID+

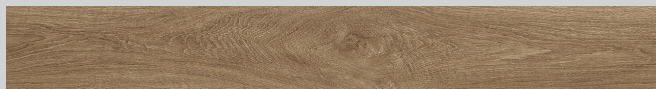
INTRODUCTION



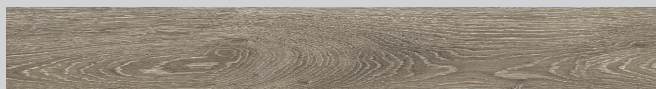
Goodrich Global Pte Ltd (Singapore), is pleased to be the proud distributor of the Luxury Vinyl Flooring or also known as the PVC Flooring Tile from NOX Corporation (Korea). We are the sole distributor of this NOX EcoClick+ Collection from NOX's premium Luxury Vinyl Tile Collection equipped with Eco-Pro-Tec™ Shield that is highly resistant against scratches and Eco-Multi-Tecture™ Core that guarantees superior dimensional stability.

ECOCLICK+ collection is both appealing and eco-friendly. It is known to be the easiest and strongest glueless LVT in the market. In addition, it has also met the stringent criteria by achieving the maximum 4-ticks in the Singapore Green Building Product certification.

Goodrich NOX Orchid+ has impressive performance in fire resistance, chemical resistance, slip resistance as well as colour fastness. Coupling Eco-Multi-Tecture™ and Eco-Pro-Tec™, NOX Orchid+ is designed to withstand scratches and prevent bacterial stagnation on the surface while maintaining a structurally sound core for long-lasting beauty and performance.



GD-31219 HICKORY GOLDEN



GD-40405 ANTIQUE OAK | BROWN



GD-45405 CENTURY OAK | GREY



GD-42502
CONCRETE | DARK GREY



GD-5120 EUROPEAN OAK | GOLDEN



GD-5121 EUROPEAN OAK | BROWN



GD-6310 GRAND OAK | WHITE



GD-42504
CONCRETE | BLACK

DESIGNS/PATTERNS



GD-4702
NATURAL OAK | HONEY



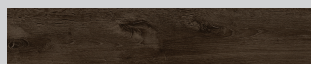
GD-5125
EUROPEAN OAK | GREY



GD-22015
NATURAL OAK | BROWN



GD-23366
EUROPEAN OAK | BROWN



GD-40607
CANYON WOOD | DARK GREY



GD-44502
NATURAL OAK | GOLDEN



GD-44601
WASHY OAK | SAND GREY



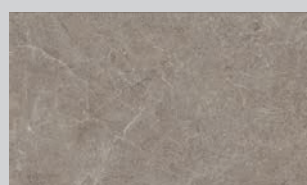
GD-44603
WASHY OAK | BEIGE



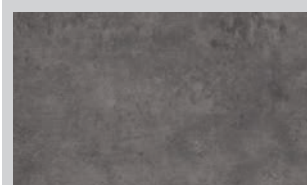
GD-34138
SERPEGGIANTE | GREY



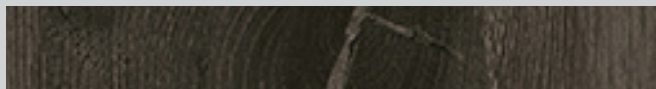
GD-34135
SERPEGGIANTE | DARK GREY



GD-1810
NATURAL MARBLE | GREY



GD-45803
DESERT | DARK GREY



NCG-6311 GRAND OAK | BLACK



NCP-40418 ANTIQUE OAK | BEIGE



NCP-6430 HICKORY | BROWN



NCP-23365 EUROPEAN OAK | BROWN GREY



NCG-40108 ANTIQUE OAK | DARK BROWN



NCG-40115 ANTIQUE OAK | GOLDEN



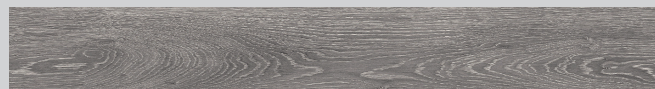
NCP-5122 EUROPEAN OAK | GOLDEN



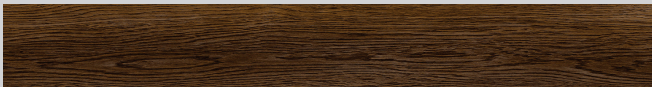
NCP-6431 HICKORY | BROWN



NCP-31217 HICKORY | GREY



NCP-40428 ANTIQUE OAK | NATURAL



NCP-45403 CENTURY OAK | DARK BROWN



NCP-45404 CENTURY OAK | NATURAL



NCI-3001
PROTO CONCRETE | WHITE



NCI-26057
STONE | LIGHT GREY



NCI-3002
PROTO CONCRETE | GREY



NCI-26067
STONE | GREY

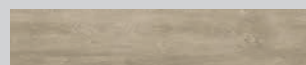
DESIGNS/PATTERNS



NOP-4601
WASHY OAK | WHITE



NOP-4603
WASHY OAK | BROWN



NOP-4701
NATURAL OAK | GREY



NOP-4901
CLASSIC OAK | AMBER



NOP-5124
EUROPEAN OAK | NATURAL



NOP-10618
ANTIQUE WOOD | NATURAL



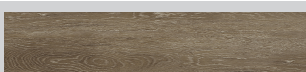
NOP-10621
ANTIQUE WOOD | BROWN



NOP-23101
CLASSIC OAK | BROWN



NOP-23353
EUROPEAN OAK | WHITE



NOP-38602
NATURAL OAK | BROWN



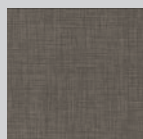
NOP-38608
NATURAL OAK | GREY



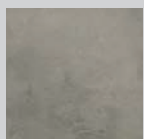
NOP-38610
WHITE OAK | NATURAL



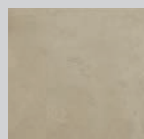
NOI-1760
GRID |
GREY



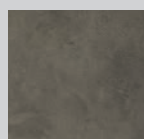
NOI-1761
GRID |
DARK GREY



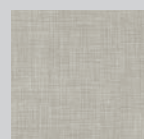
NOI-14312
BRONZE |
GREY



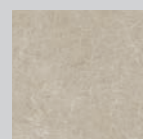
NOI-14337
BRONZE |
BEIGE



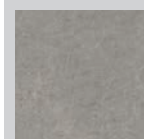
NOI-14343
BRONZE |
DARK GREY



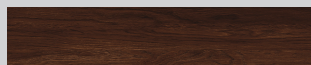
NOI-20509
GRID |
WHITE



NOI-24909
NATURAL
MARBLE |
SAND



NOI-2491
NATURAL
MARBLE |
COOL GREY



NOP-44505
NATURAL OAK | CHOCOLATE



NOP-44801
ACADIA | BROWN



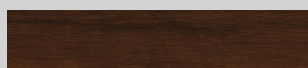
NOP-44806
ACADIA | DARK GREY



NOP-46401
BEECH | GOLDEN



NOP-46402
BEECH | GREY



NOP-46403
BEECH | CHOCOLATE



NOR-6420
HICKORY | GREY



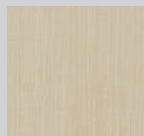
NOR-6421
HICKORY | BROWN



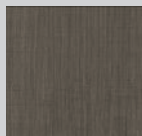
NOR-31235
HICKORY | BEIGE



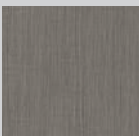
NOR-40601
CANYON WOOD | BROWN



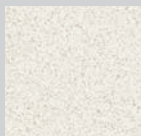
NOI-37202
FABRIC |
BEIGE



NOI-37208
FABRIC |
BROWN



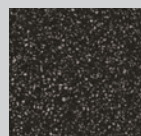
NOI-37209
FABRIC |
DARK GREY



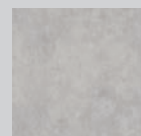
NOI-44701
TERRAZZO |
WHITE



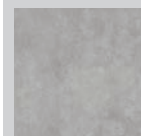
NOI-44704
TERRAZZO |
GREY



NOI-44707
TERRAZZO |
BLACK



NOI-45801
DESERT |
LIGHT GREY



NOI-45802
DESERT |
GREY

GOODRICH ANTIMICROBIAL

WITH GOODRICH,

Your habitat becomes

A gallery of

Your **self-expressions**;

A canvas for

Your **creativity**;

A space for

Your **soul**;

A showcase of

Your **taste for life**;



Stay Connected - www.goodrichglobal.com | info@goodrichglobal.com

 /Goodrich.Global.Singapore  /goodrich_global  /GoodrichGlobal  /GoodrichChina  /GoodrichGlobal  /goodrichglobal  /GoodrichHQ  /Goodrich_Global



SINGAPORE (HQ) | CHINA | HONG KONG (CHINA) | INDIA | INDONESIA | MALAYSIA | MYANMAR | PHILIPPINES | THAILAND | UNITED ARAB EMIRATES | VIETNAM

Copyright © 2020 Goodrich Global. All rights reserved.