

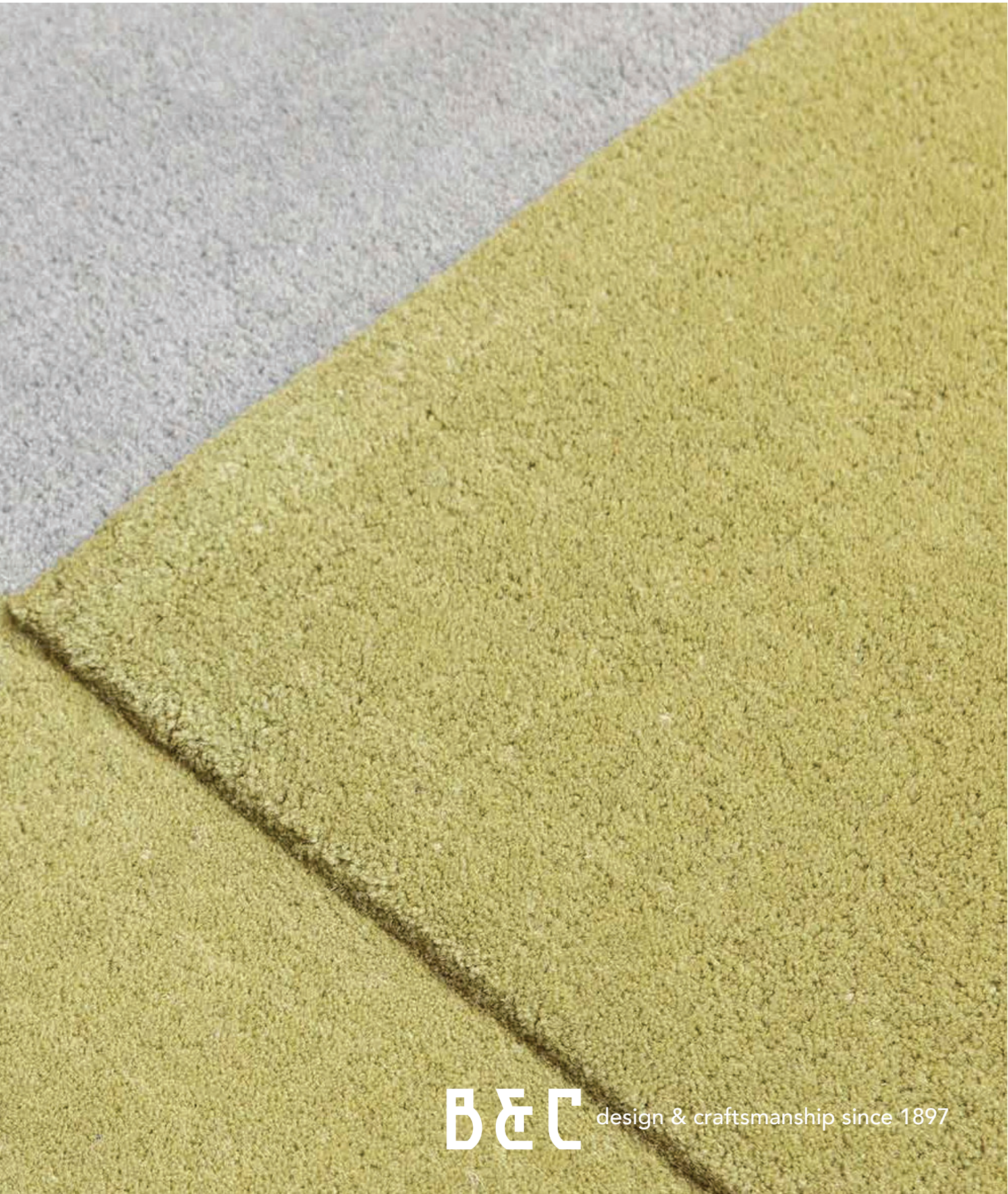
**BRINK & CAMPMAN**

home interiors

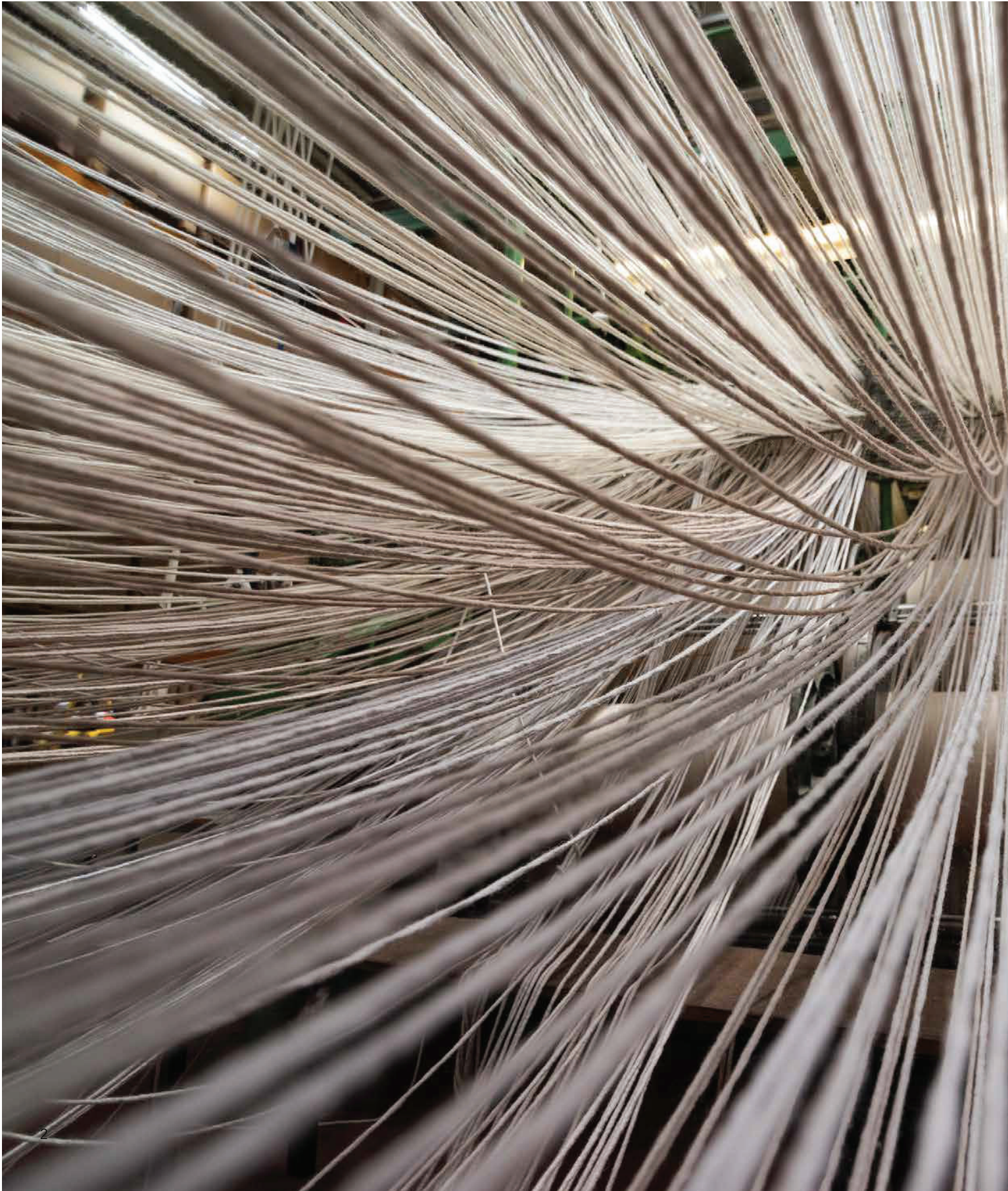
COLLECTION '23







**B&C** design & craftsmanship since 1897



# Brink & Campman

At B&C we are celebrating our 125th anniversary this year.

We have been manufacturing and designing rugs for over a century.

Rugs that are born out of a combination of passion, craftsmanship and sustainability.

Our love for beautiful yarns and their endless possibilities motivates us each time to design and make the most unique and innovative rugs.

Besides the knowledge we have gained in the past century, we are constantly looking for innovation. We work with carefully selected producers from all over the world to develop new techniques and qualities. This collaboration ensures that we can continue to innovate and improve and is reflected in the versatile collection of rugs for which Brink & Campman is renowned.

We know better than anyone that every step in the process from raw wool to refined rug is of great importance.

That's why we look for the best applications and materials at every step.

The majority of our rugs are produced in our factory in Lichtenvoorde, the Netherlands, so we have a perfect view of the different processes that are so important to ensure the high-quality result we always envision.

**B&C**





# Yarns

A large proportion of the rugs in B&C's collection are made using yarns that we have developed ourselves over the years.

The development of these fibers enables us to make carpets in which the yarn rather than the design determines the appearance of the carpet.

Through our years of experience and constant development in this area, we can proudly say that we have developed materials that show the clear signature of B&C. We have developed yarns that get their unique look from the way they are dyed, felted or spun.

This development is an essential part of the design process, where a lot of attention is paid to the color, material thickness, material composition, etc. A minimal adjustment in one of these aspects can result in a maximum difference in the appearance of the rug that is eventually brought into the collection.







# Trace

axminster woven/tufted - pure new wool  
total weight ca 4400 gr/m<sup>2</sup> | 5500 gr/m<sup>2</sup> (loop pile)  
pile weight ca 3000 gr/m<sup>2</sup> | 4000 gr/m<sup>2</sup> (loop pile)  
pile height ca 15/35 mm | 35 mm (loop pile)  
available sizes:  
140x200 cm 4'7" x 6'7"  
170x240 cm 5'7" x 7'10"  
200x300 cm 6'7" x 9'8"  
250x350 cm 8'2" x 11'6"  
custom sizes on request



Trace mandarin orange | cut pile 120903



Trace midnight blue | cut pile 120908



Trace midnight blue | loop pile 121008



Trace mandarin orange | loop pile 121003



Trace olive green | cut pile 120917



Trace olive green | loop pile 121017



Trace turmeric yellow | cut pile 120906



Trace forest green | cut pile 120907



Trace forest green | loop pile 121007



Trace turmeric yellow | loop pile 121006



Rocks 70537



Rocks 70523



Rocks 70547



Rocks 70531



Rocks 70528



Rocks 70534



Rocks 70401



Rocks 70501



Rocks 70504



Rocks 70405



Rocks 70411



Rocks 70213

# Rocks

axminster woven - pure new wool  
total weight ca 5500 gr/m<sup>2</sup>  
pile weight ca 4000 gr/m<sup>2</sup>  
pile height ca 20/50 mm  
available sizes:  
140x200 cm 4'7" x 6'7"  
170x240 cm 5'7" x 7'10"  
200x300 cm 6'7" x 9'8"  
250x300 cm 8'2" x 9'8"  
250x350 cm 8'2" x 11'6"  
custom sizes on request







# Dots

axminster woven - pure new wool

total weight ca 4500 gr/m<sup>2</sup>

pile weight ca 3000 gr/m<sup>2</sup>

pile height ca 25/30 mm

available sizes:

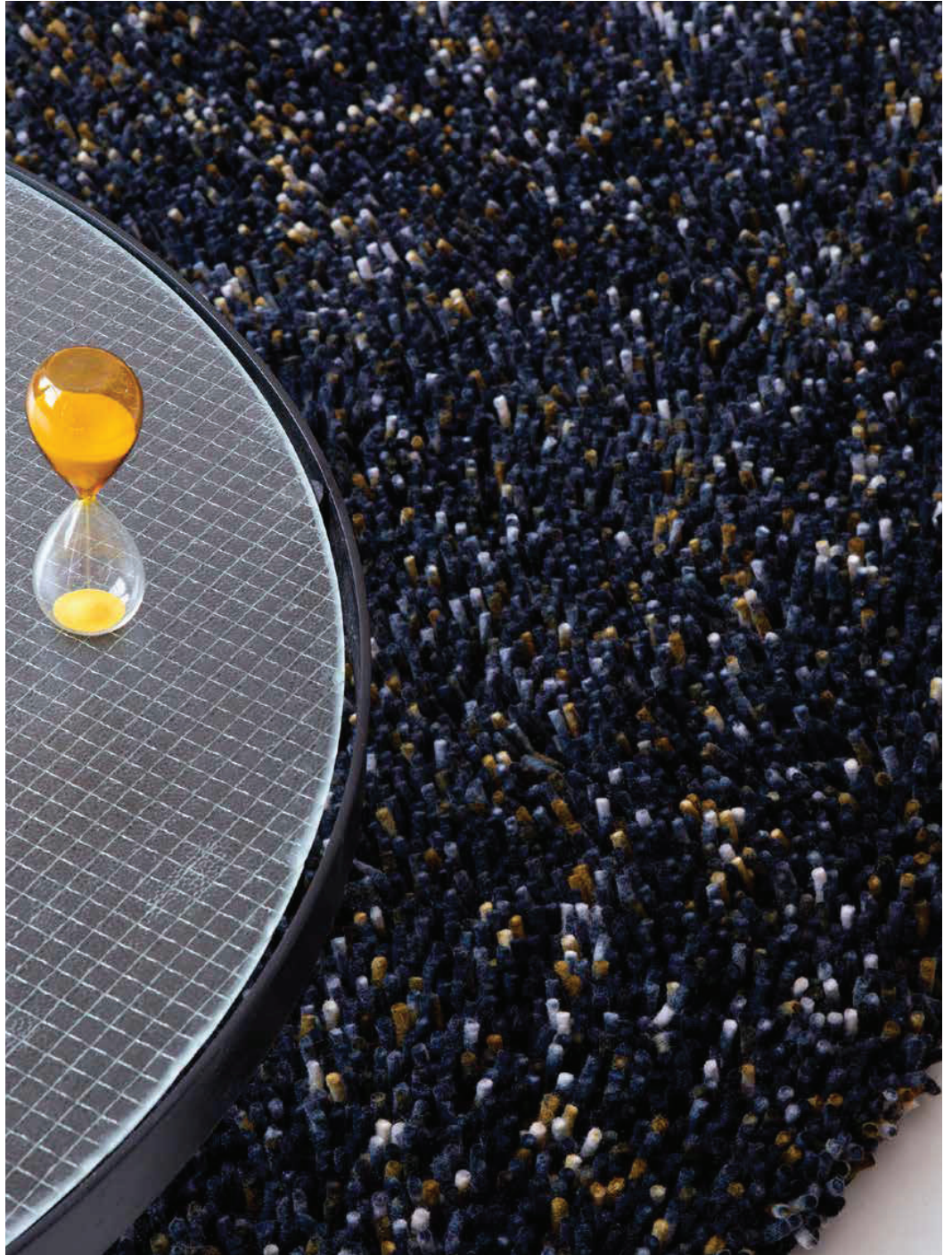
140x200 cm 4'7" x 6'7"

170x240 cm 5'7" x 7'10"

200x300 cm 6'7" x 9'8"

250x350 cm 8'2" x 11'6"

custom sizes on request







Dots 170537



Dots 170523



Dots 170547



Dots 170531



Dots 170528



Dots 170534



Dots 170401



Dots 170501



Dots 170504



Dots 170405



Dots 170411



Dots 170213 15

# Pop Art

axminster woven - pure new wool  
total weight ca 4000 gr/m<sup>2</sup>  
pile weight ca 2600 gr/m<sup>2</sup>  
pile height ca 15/40 mm  
available sizes:  
140x200 cm 4'7" x 6'7"  
160x230 cm 5'3" x 7'6"  
200x280 cm 6'7" x 9'2"  
custom sizes on request



Pop Art 066904



Pop Art 066901



Pop Art 066907



Pop Art 066906



Pop Art 066902



Pop Art 066905





# Gravel

axminster woven - pure new wool

total weight ca 4400 gr/m<sup>2</sup>

pile weight ca 3000 gr/m<sup>2</sup>

pile height ca 15/35 mm

available sizes:

140x200 cm 4'7" x 6'7"

170x240 cm 5'7" x 7'10"

200x300 cm 6'7" x 9'8"

250x350 cm 8'2" x 11'6"

custom sizes on request



Gravel 68009



Gravel 68001



Gravel 68209



Gravel 68201



Gravel 68211 19





# Young

tufted - pure new wool  
total weight ca 3900 gr/m<sup>2</sup>  
pile weight ca 2500 gr/m<sup>2</sup>  
pile height ca 15/45 mm  
available sizes:  
140x200 cm 4'7" x 6'7"  
160x230 cm 5'3" x 7'6"  
200x280 cm 6'7" x 9'2"  
250x350 cm 8'2" x 11'6"  
custom sizes on request



Young 061804



Young 061801



Young 061805



Young 061807



Young 061806



Young 061802







# Quartz

tufted - pure new wool/ Tencel™

total weight ca 3200 gr/m<sup>2</sup>

pile weight ca 1800 gr/m<sup>2</sup>

pile height ca 15/35 mm

available sizes:

140x200 cm 4'7" x 6'7"

170x240 cm 5'7" x 7'10"

200x300 cm 6'7" x 9'8"

custom sizes on request



Quartz 067104



Quartz 067101



Quartz 067108 25

# Spring

tufted - pure new wool  
total weight ca 3900 gr/m<sup>2</sup>  
pile weight ca 2500 gr/m<sup>2</sup>  
pile height ca 15/45 mm  
available sizes:  
140x200 cm 4'7" x 6'7"  
170x240 cm 5'7" x 7'10"  
200x300 cm 6'7" x 9'8"  
250x350 cm 8'2" x 11'6"  
custom sizes on request



Spring 59107



Spring 59103



Spring 59101



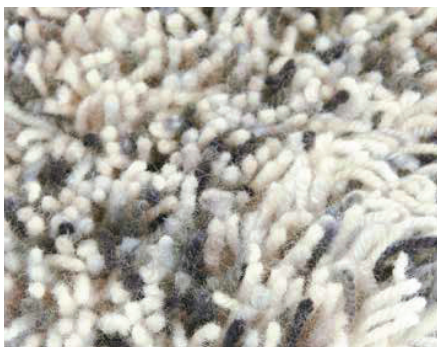
Spring 59105





# Flamenco

tufted - pure new wool  
total weight ca 3600 gr/m<sup>2</sup>  
pile weight ca 2400 gr/m<sup>2</sup>  
pile height ca 15/40 mm  
available sizes:  
140x200 cm 4'7" x 6'7"  
160x230 cm 5'3" x 7'6"  
200x280 cm 6'7" x 9'2"  
250x350 cm 8'2" x 11'6"  
custom sizes on request



Flamenco 59004



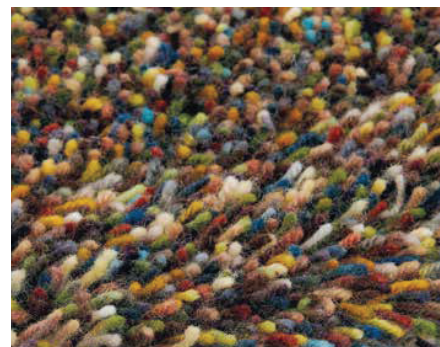
Flamenco 59001



Flamenco 59005



Flamenco 59018



Flamenco 59017 29

# Arch

tufted - pure new wool  
total weight ca 4150 gr/m<sup>2</sup>  
pile weight ca 2800 gr/m<sup>2</sup>  
pile height ca 30 mm  
available sizes:  
140x200 cm 4'7" x 6'7"  
170x240 cm 5'7" x 7'10"  
200x300 cm 6'7" x 9'8"  
250x350 cm 8'2" x 11'6"  
custom sizes on request



Arch 067004



Arch 067001



Arch 067005



Arch 067007



Arch 067006



Arch 067002







# Mural form

tufted - pure new wool  
total weight ca 3500 gr/m<sup>2</sup>  
pile weight ca 2000 gr/m<sup>2</sup>  
pile height ca 17 mm  
available sizes:  
140x240 cm 4'7" x 7'10"  
160x280 cm 5'3" x 9'2"  
200x350 cm 6'7" x 11'6"  
250x440 cm 8'2" x 14'5"



Mural forest 121107

# Mural modest

tufted - pure new wool  
total weight ca 3500 gr/m<sup>2</sup>  
pile weight ca 2000 gr/m<sup>2</sup>  
pile height ca 17 mm  
available sizes:  
140x200 cm 4'7" x 6'7"  
170x240 cm 5'7" x 7'10"  
200x280 cm 6'7" x 9'2"  
250x350 cm 8'2" x 11'6"







# Mural bold

tufted - pure new wool  
total weight ca 3500 gr/m<sup>2</sup>  
pile weight ca 2000 gr/m<sup>2</sup>  
pile height ca 17 mm  
available sizes:  
140x200 cm 4'7" x 6'7"  
170x240 cm 5'7" x 7'10"  
200x280 cm 6'7" x 9'2"  
250x350 cm 8'2" x 11'6"



Mural cement 121104



# Twinset | Urban

tufted - pure new wool/ Tencel™

total weight ca 3700 gr/m<sup>2</sup>

pile weight ca 2200 gr/m<sup>2</sup>

pile height ca 17 mm

available sizes:

140x200 cm 4'7" x 6'7"

170x240 cm 5'7" x 7'10"

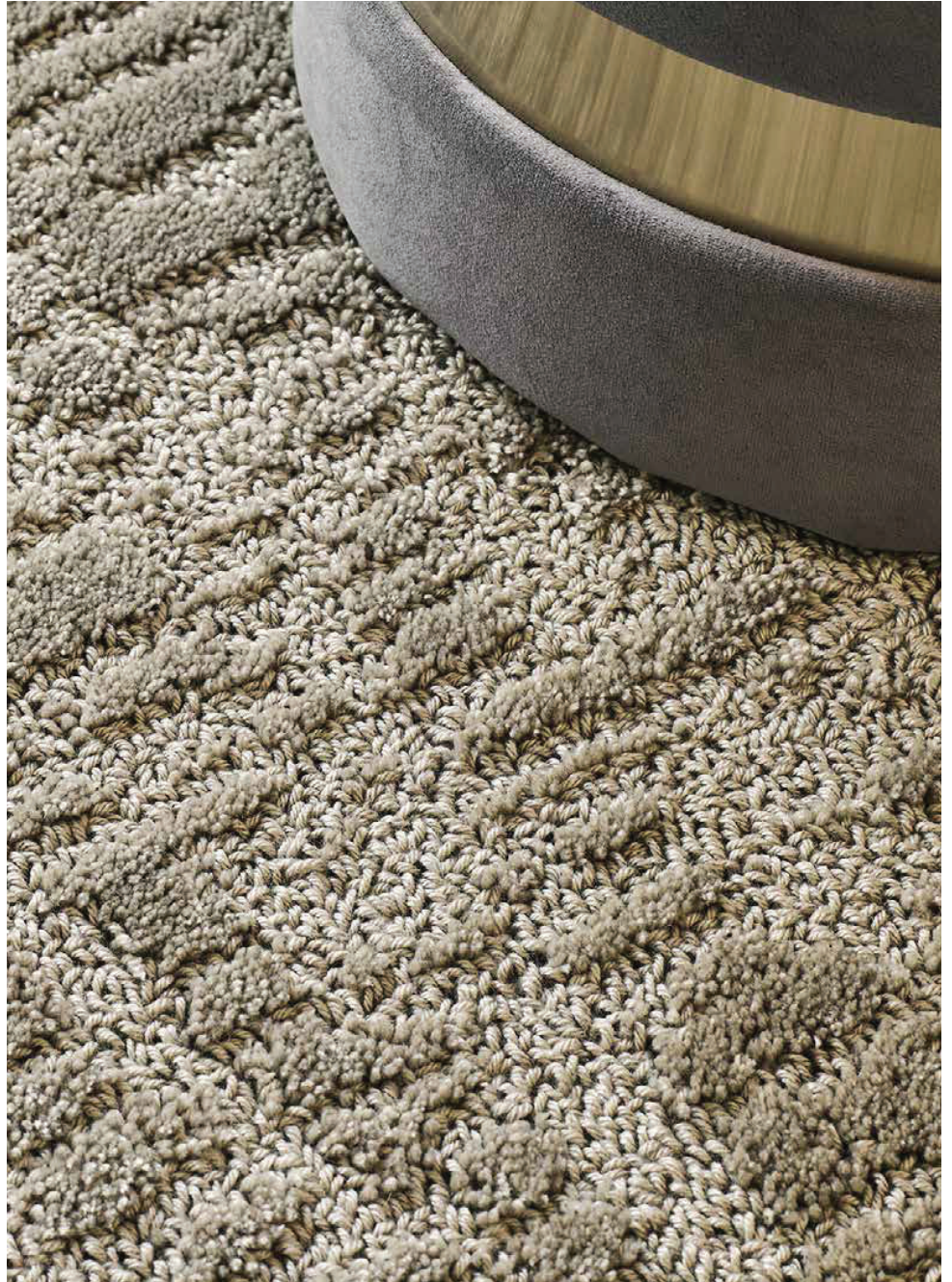
200x300 cm 6'7" x 9'8"

250x350 cm 8'2" x 11'6"

custom sizes on request

available in a range of custom colors

Twinset Urban 22101









# Handmade

A large part of the B&C collection is handmade. We have rugs that are knotted, woven or tufted by hand in different parts of the world.

The handknotted carpets gain their quality and beautiful appearance through the use of traditional techniques in combination with the most beautiful yarns. The craftsmanship and the traditional way of working catch the eye and allow us to go a step further in the development of the designs.

In addition to the handknotted rugs, we have rugs that are woven by hand. These rugs are characterized by the technique of flat weaving. We are always looking for new techniques and possibilities within flat weaving. For example, we have developed a double-weave technique that makes it possible to use large open-weave structures in the designs.

Furthermore, we have handtufted rugs. This quality offers totally different possibilities. When tufting, for instance a loop pile or a cut pile can be chosen. These two can also be combined very well in different designs to achieve a very surprising result.

All of these techniques are mastered by our partners already for generations onwards. The love for these skills, materials and colors are visible in each and every rug.

# Pebble

handwoven - wool & flax  
total weight ca 4500 gr/m<sup>2</sup>  
no pile due to flatweave structure  
available sizes:  
140x200 cm 4'7" x 6'7"  
170x240 cm 5'7" x 7'10"  
200x300 cm 6'7" x 9'8"  
250x350 cm 8'2" x 11'6"  
custom sizes on request  
reversible



Pebble fresh green 129807



Pebble touch of orange 129803



Pebble natural sand 129811



Pebble beach beige 129801



Pebble cool grey 129804





# Tumble

handwoven – wool & flax  
total weight ca 2400 gr/m2  
no pile due to flatweave structure  
available sizes:  
140 x 200 cm 4'7" x 6'7"  
160 x 230 cm 5'3" x 7'6"  
200 x 280 cm 6'7" x 9'2"  
250 x 350 cm 8'2" x 11'6"  
custom sizes are available  
reversible



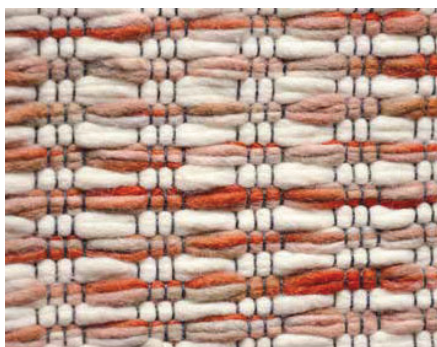
Tumble 013601

# Grain

handwoven – pure new wool  
total weight ca 2200 gr/m<sup>2</sup>  
no pile due to flatweave structure  
available sizes:  
140x 200 cm 4'7" x 6'7"  
160x 230 cm 5'3" x 7'6"  
200x 280 cm 6'7" x 9'2"  
250x 350 cm 8'2" x 11'6"  
custom sizes are available  
reversible



Grain 013501



Grain 013502



Grain 013504



Grain 013505



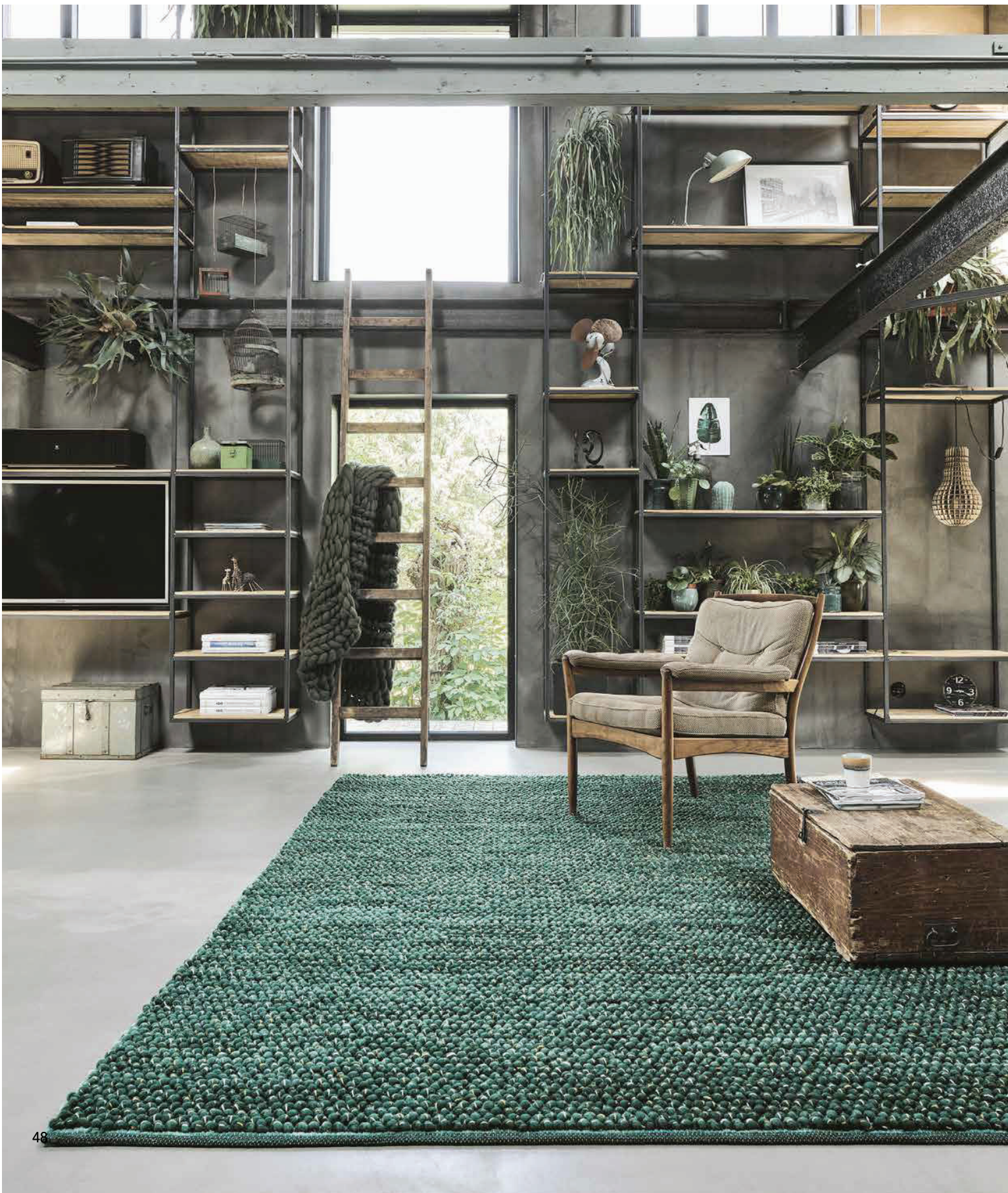
Grain 013506



Grain 013507







# Cobble

handwoven - wool & flax  
total weight ca 4200 gr/m<sup>2</sup>  
no pile due to flatweave structure  
available sizes:  
140x200 cm 4'7" x 6'7"  
170x240 cm 5'7" x 7'10"  
200x300 cm 6'7" x 9'8"  
250x350 cm 8'2" x 11'6"  
custom sizes on request



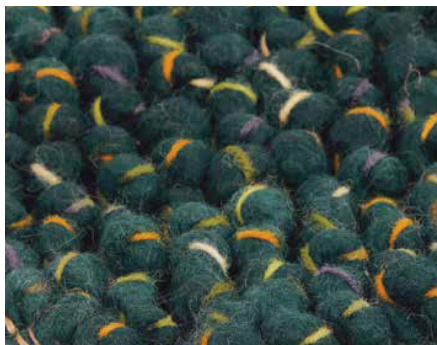
Cobble 29201



Cobble 29204



Cobble 29206



Cobble 29207



Cobble 29208 49

# Marble

handwoven - wool & flax  
total weight ca 4500 gr/m<sup>2</sup>  
no pile due to flatweave structure  
available sizes:  
140x200 cm 4'7" x 6'7"  
170x240 cm 5'7" x 7'10"  
200x300 cm 6'7" x 9'8"  
250x350 cm 8'2" x 11'6"  
custom sizes on request



Marble 29501



Marble 29503



Marble 29505



Marble 29507



Marble 29517



Marble 29500





# Atelier

handwoven - pure new wool  
total weight ca 2500 gr/m<sup>2</sup>  
no pile due to flatweave structure  
available sizes:  
140x200 cm 4'7" x 6'7"  
160x230 cm 5'3" x 7'6"  
200x280 cm 6'7" x 9'2"  
250x350 cm 8'2" x 11'6"  
custom sizes on request



Atelier twill 49201



Atelier twill 49206



Atelier twill 49207 53







# Design Studio

All Brink & Campman rugs are created in the design studio, which we proudly refer to as the heart of our company.

Our designers develop the unique collections, starting with a beautiful yarn, inspired by trends, or fascinated by the possibilities of a technique.

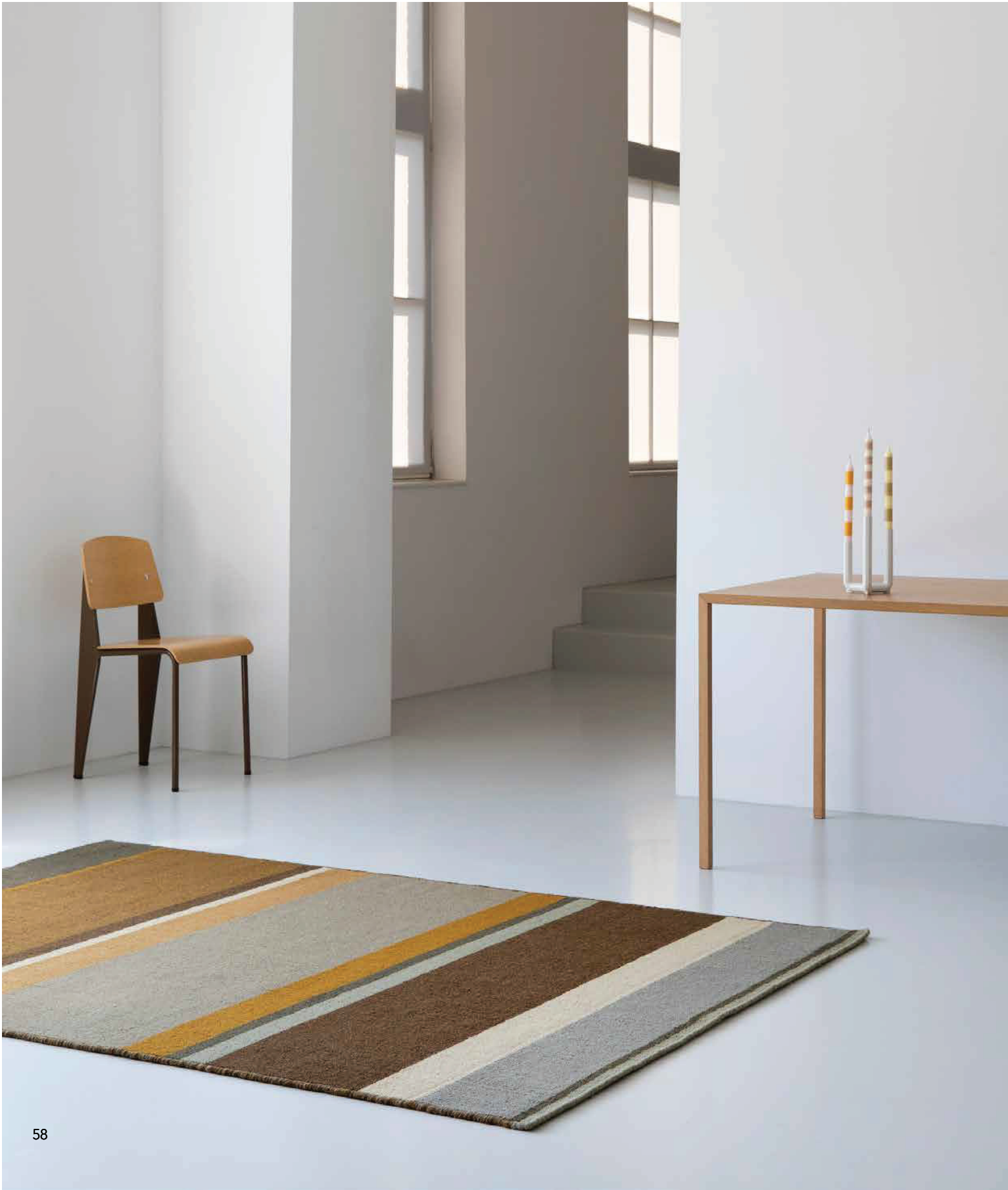
In the design process, we work with great passion and creativity, but we do not lose sight of craftsmanship, quality and sustainability.

We are convinced that only together, and in combination with our knowledge and expertise, can all these aspects lead to the high-quality rugs we love to make.

The fact that we bring a new collection every year gives us both the opportunity and the challenge to keep developing, renewing and improving.

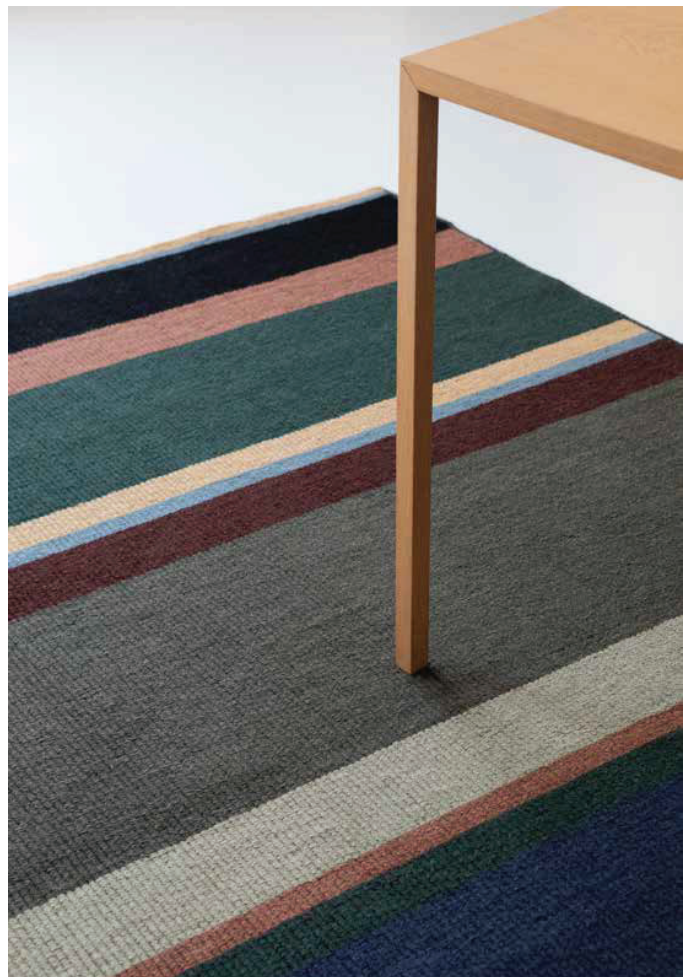
An important aspect that we are still working on in the design studio and that we would like to develop even further is sustainability. The fact that we mostly work with natural materials such as wool is of course already an advantage but it is our goal to be on the lookout for opportunities to reduce our ecological footprint.





# Artisan | Stack ochre & green

handloom - pure new wool  
total weight ca 4000 gr/m<sup>2</sup>  
pile weight ca 2700 gr/m<sup>2</sup>  
no pile due to flatweave structure  
available sizes:  
140x200 cm 4'7" x 6'7"  
160x230 cm 5'3" x 7'6"  
200x280 cm 6'7" x 9'2"  
250x350 cm 8'2" x 11'6"



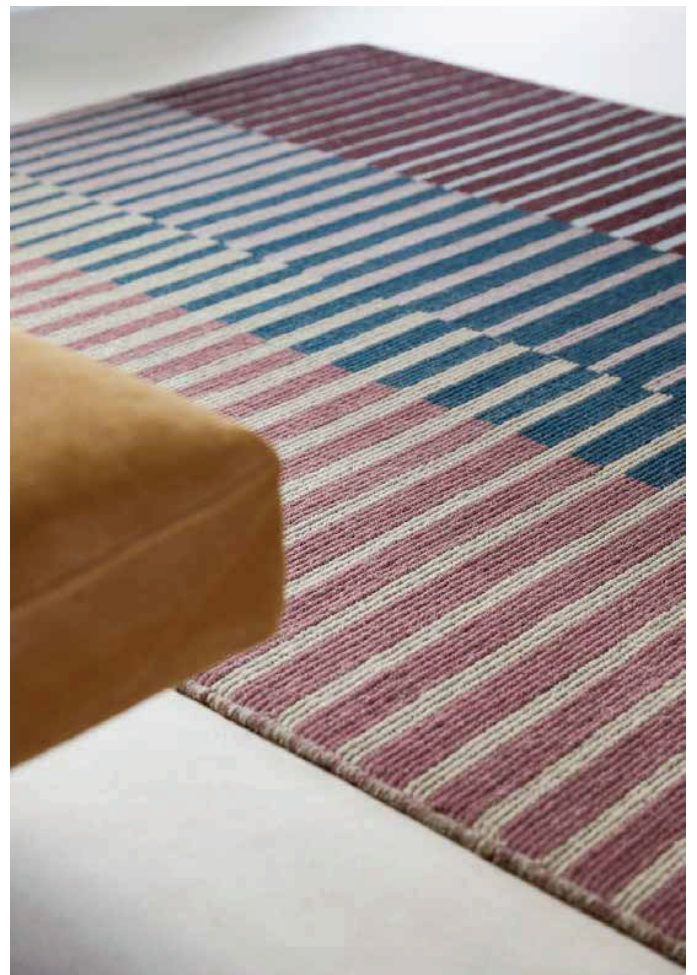
Stack ochre 090201



Stack green 090207

# Artisan | Focus dawn & dusk

handloom - pure new wool  
total weight ca 4000 gr/m<sup>2</sup>  
pile weight ca 2700 gr/m<sup>2</sup>  
no pile due to flatweave structure  
available sizes:  
140x200 cm 4'7" x 6'7"  
160x230 cm 5'3" x 7'6"  
200x280 cm 6'7" x 9'2"  
250x350 cm 8'2" x 11'6"



60 Focus dawn 096103

Focus dusk 096108

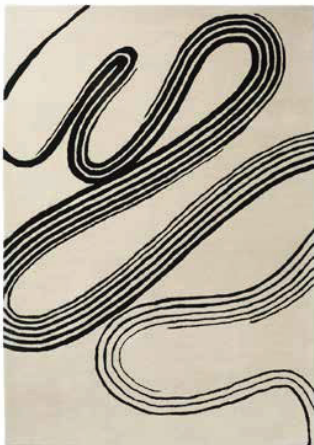






# Decor | Flow

handtufted - pure new wool  
total weight ca 4500 gr/m<sup>2</sup>  
pile weight ca 2500 gr/m<sup>2</sup>  
pile height ca 12 mm  
available sizes:  
140x200 cm 4'7" x 6'7"  
160x230 cm 5'3" x 7'6"  
200x280 cm 6'7" x 9'2"  
250x350 cm 8'2" x 11'6"  
custom sizes on request



Flow soft sand 091309



Flow caviar 091305

# Decor | Order

handtufted - pure new wool & viscose

total weight ca 4500 gr/m<sup>2</sup>

pile weight ca 2500 gr/m<sup>2</sup>

pile height ca 12 mm

available sizes:

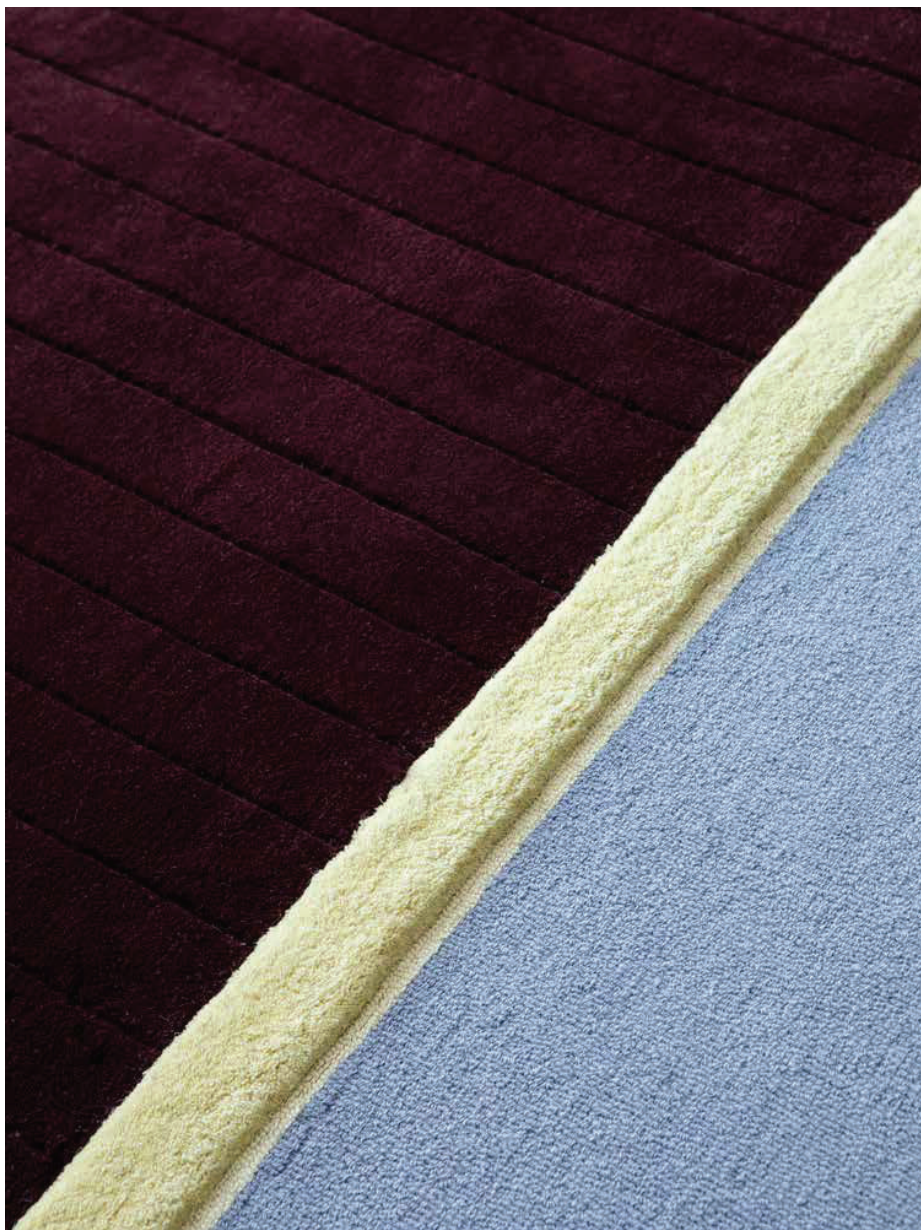
140x200 cm 4'7" x 6'7"

160x230 cm 5'3" x 7'6"

200x280 cm 6'7" x 9'2"

250x350 cm 8'2" x 11'6"

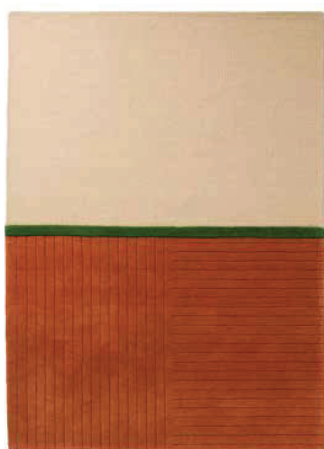
custom sizes on request





# Decor | Rhythm

handtufted - pure new wool  
total weight ca 4500 gr/m<sup>2</sup>  
pile weight ca 2500 gr/m<sup>2</sup>  
pile height ca 12 mm  
available sizes:  
140x200 cm 4'7" x 6'7"  
160x230 cm 5'3" x 7'6"  
200x280 cm 6'7" x 9'2"  
250x350 cm 8'2" x 11'6"  
custom sizes on request



66 Rhythm tangerine 098003

# Decor | State

handtufted - pure new wool & viscose

total weight ca 4500 gr/m<sup>2</sup>

pile weight ca 2500 gr/m<sup>2</sup>

pile height ca 12 mm

available sizes:

140x200 cm 4'7" x 6'7"

160x230 cm 5'3" x 7'6"

200x280 cm 6'7" x 9'2"

250x350 cm 8'2" x 11'6"

custom sizes on request



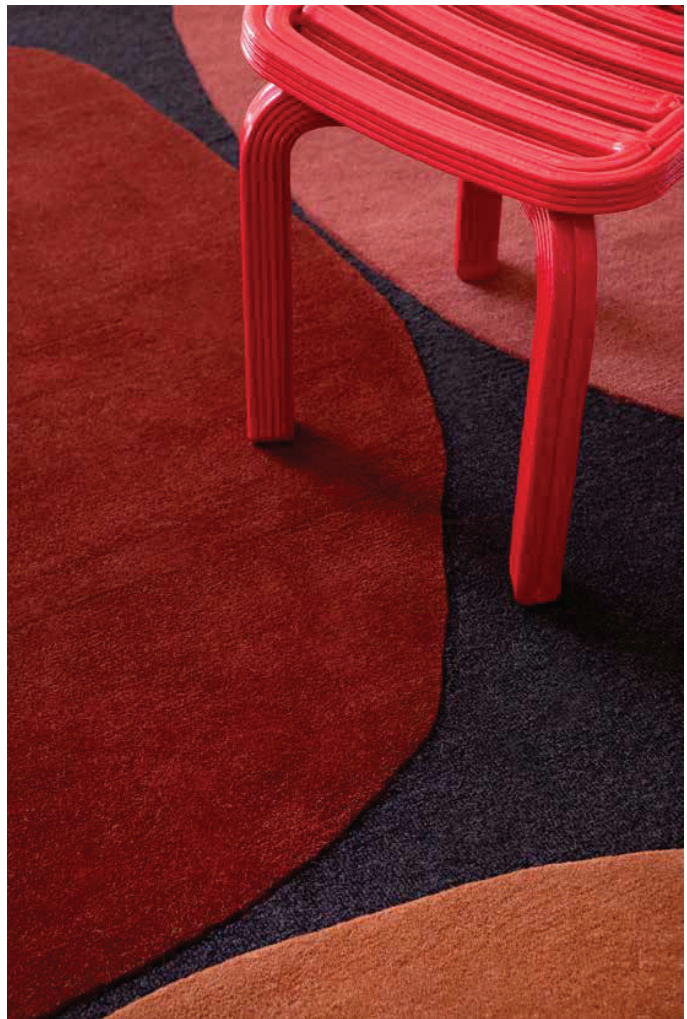
State soft green 097107





# Decor | Plateau

handtufted - pure new wool  
total weight ca 4500 gr/m<sup>2</sup>  
pile weight ca 2500 gr/m<sup>2</sup>  
pile height ca 12 mm  
available sizes:  
140x200 cm 4'7" x 6'7"  
160x230 cm 5'3" x 7'6"  
200x280 cm 6'7" x 9'2"  
250x350 cm 8'2" x 11'6"  
custom sizes on request



Plateau moss 091907



Plateau terra 091903

# Decor | Dune

handtufted - pure new wool  
total weight ca 4500 gr/m<sup>2</sup>  
pile weight ca 2500 gr/m<sup>2</sup>  
pile height ca 12 mm  
available sizes:  
140x200 cm 4'7" x 6'7"  
160x230 cm 5'3" x 7'6"  
200x280 cm 6'7" x 9'2"  
250x350 cm 8'2" x 11'6"  
custom sizes on request



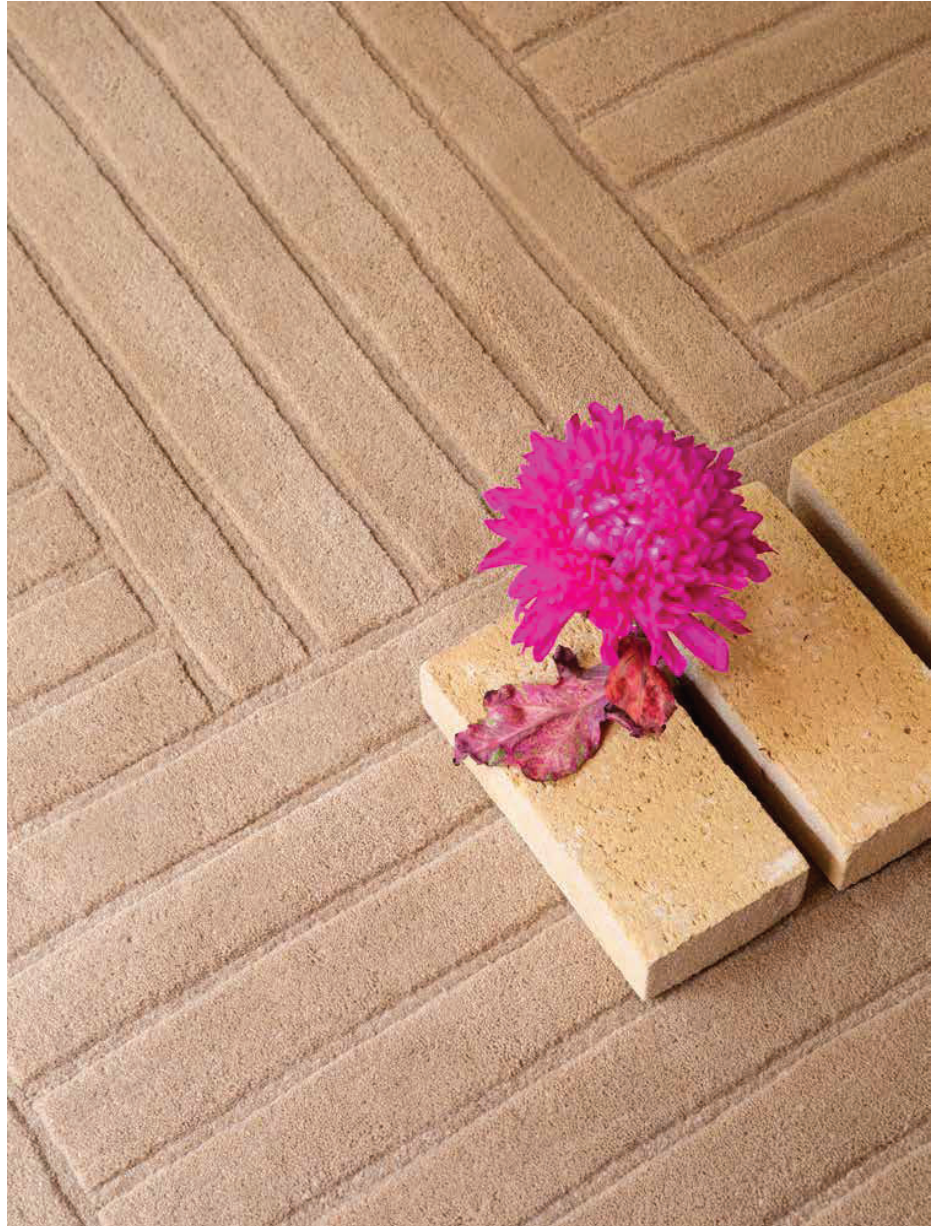
70 Dune Oyster 092701





# Decor | Desert

handtufted - pure new wool  
total weight ca 4500 gr/m<sup>2</sup>  
pile weight ca 2500 gr/m<sup>2</sup>  
pile height ca 12 mm  
available sizes:  
140x200 cm 4'7" x 6'7"  
160x230 cm 5'3" x 7'6"  
200x280 cm 6'7" x 9'2"  
250x350 cm 8'2" x 11'6"  
custom sizes on request



72 Desert warm sand 092601

# Decor | Bedou

handtufted - pure new wool  
total weight ca 4500 gr/m2  
pile weight ca 2500 gr/m2  
pile height ca 12 mm  
available sizes:  
140x200 cm 4'7" x 6'7"  
160x230 cm 5'3" x 7'6"  
200x280 cm 6'7" x 9'2"  
250x350 cm 8'2" x 11'6"  
custom sizes on request



Bedou cobblestone 092501





# Decor | Primi

handtufted - pure new wool

total weight ca 4500 gr/m<sup>2</sup>

pile weight ca 2500 gr/m<sup>2</sup>

pile height ca 12 mm

available sizes:

140x200 cm 4'7" x 6'7"

160x230 cm 5'3" x 7'6"

200x280 cm 6'7" x 9'2"

250x350 cm 8'2" x 11'6"

custom sizes on request



Primi double cream 092101

# Decor | Bruta

handtufted - pure new wool  
total weight ca 4500 gr/m<sup>2</sup>  
pile weight ca 2500 gr/m<sup>2</sup>  
pile height ca 12 mm  
available sizes:  
140x200 cm 4'7" x 6'7"  
160x230 cm 5'3" x 7'6"  
200x280 cm 6'7" x 9'2"  
250x350 cm 8'2" x 11'6"  
custom sizes on request



76 Bruta caramel 092201



Bruta off-black 092205

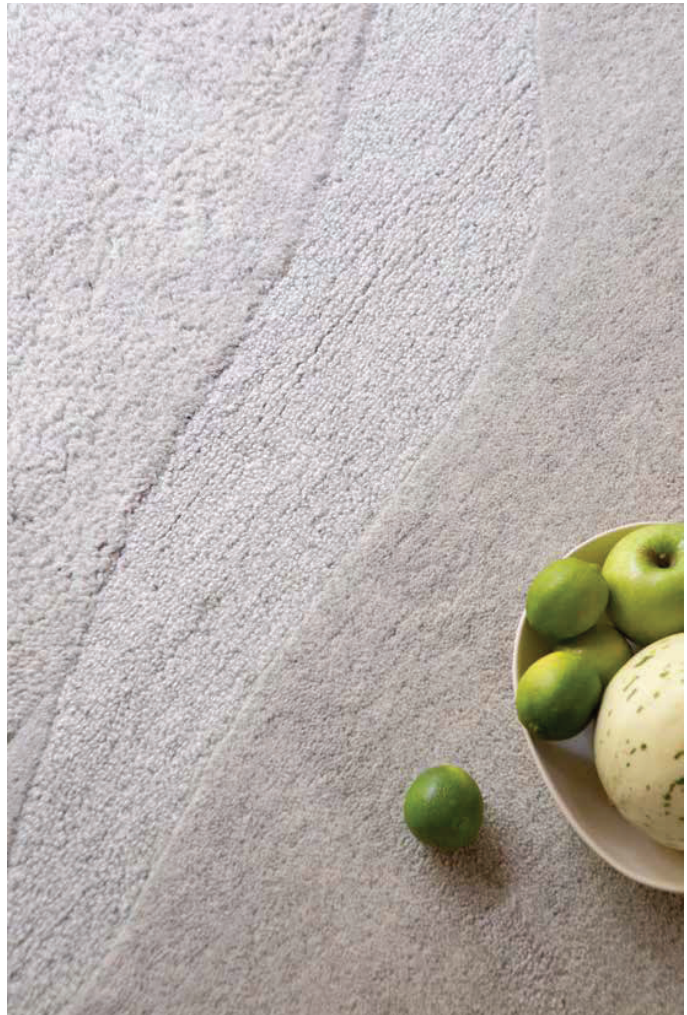






# Decor | Scape

handtufted - pure new wool  
total weight ca 4500 gr/m<sup>2</sup>  
pile weight ca 2500 gr/m<sup>2</sup>  
pile height ca 12 mm  
available sizes:  
140x200 cm 4'7" x 6'7"  
160x230 cm 5'3" x 7'6"  
200x280 cm 6'7" x 9'2"  
250x350 cm 8'2" x 11'6"  
custom sizes on request



Scape natural grey 095004



Scape bear brown 095005

# Decor | Scape

handtufted - pure new wool  
total weight ca 4500 gr/m<sup>2</sup>  
pile weight ca 2500 gr/m<sup>2</sup>  
pile height ca 7-14 mm  
available sizes:  
140x200 cm 4'7" x 6'7"  
160x230 cm 5'3" x 7'6"  
200x280 cm 6'7" x 9'2"  
250x350 cm 8'2" x 11'6"  
custom sizes on request



Scape woolwhite 095001

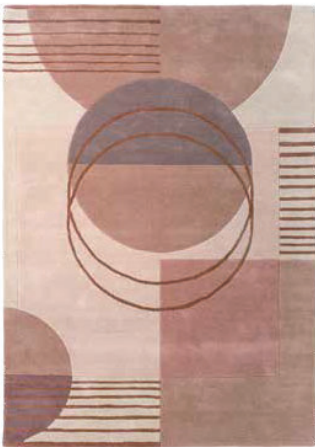
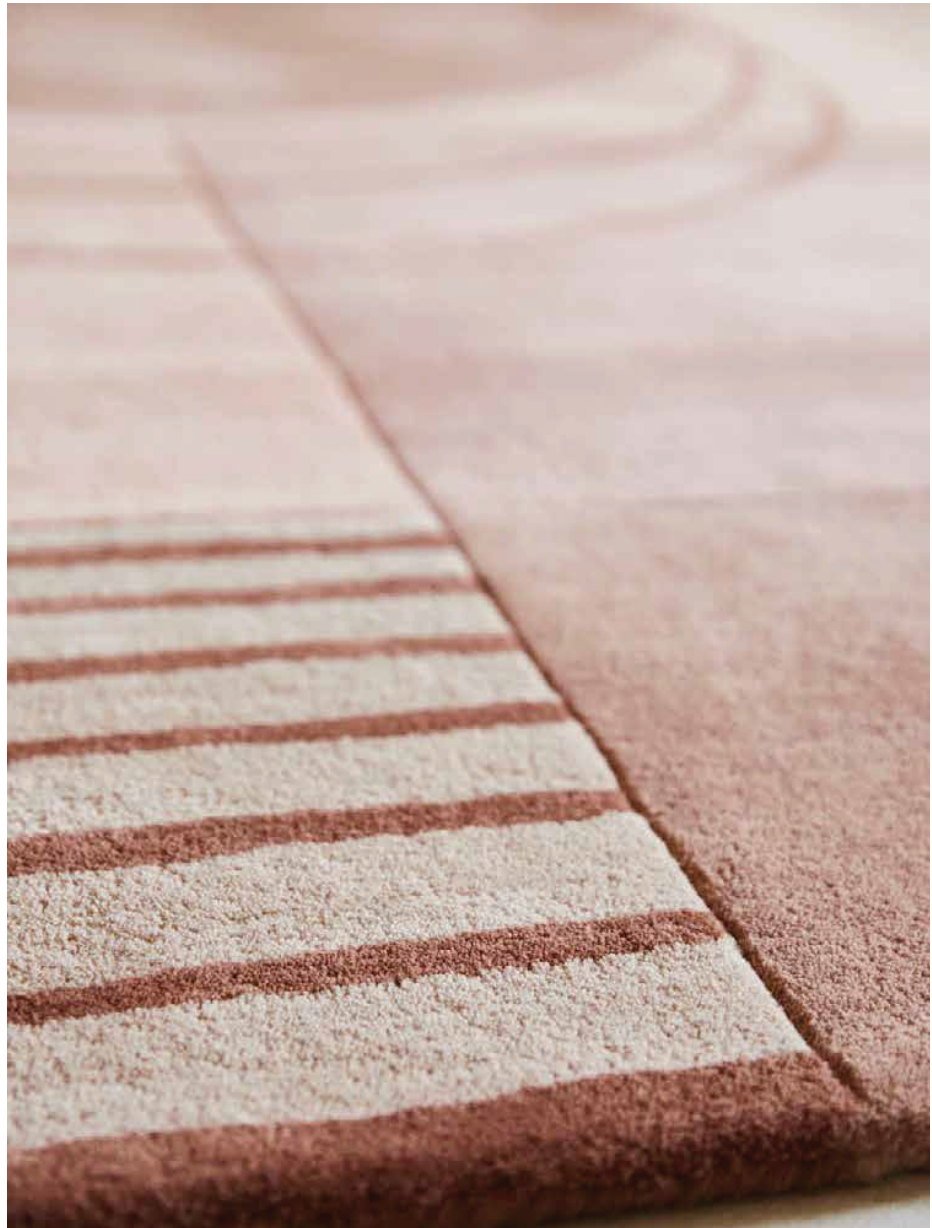






# Decor | Lola

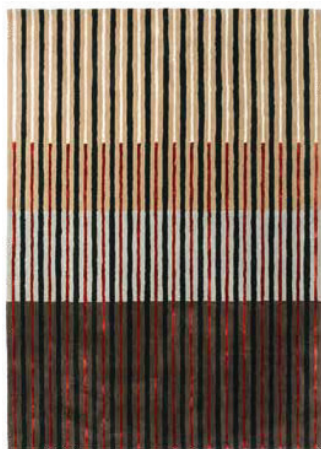
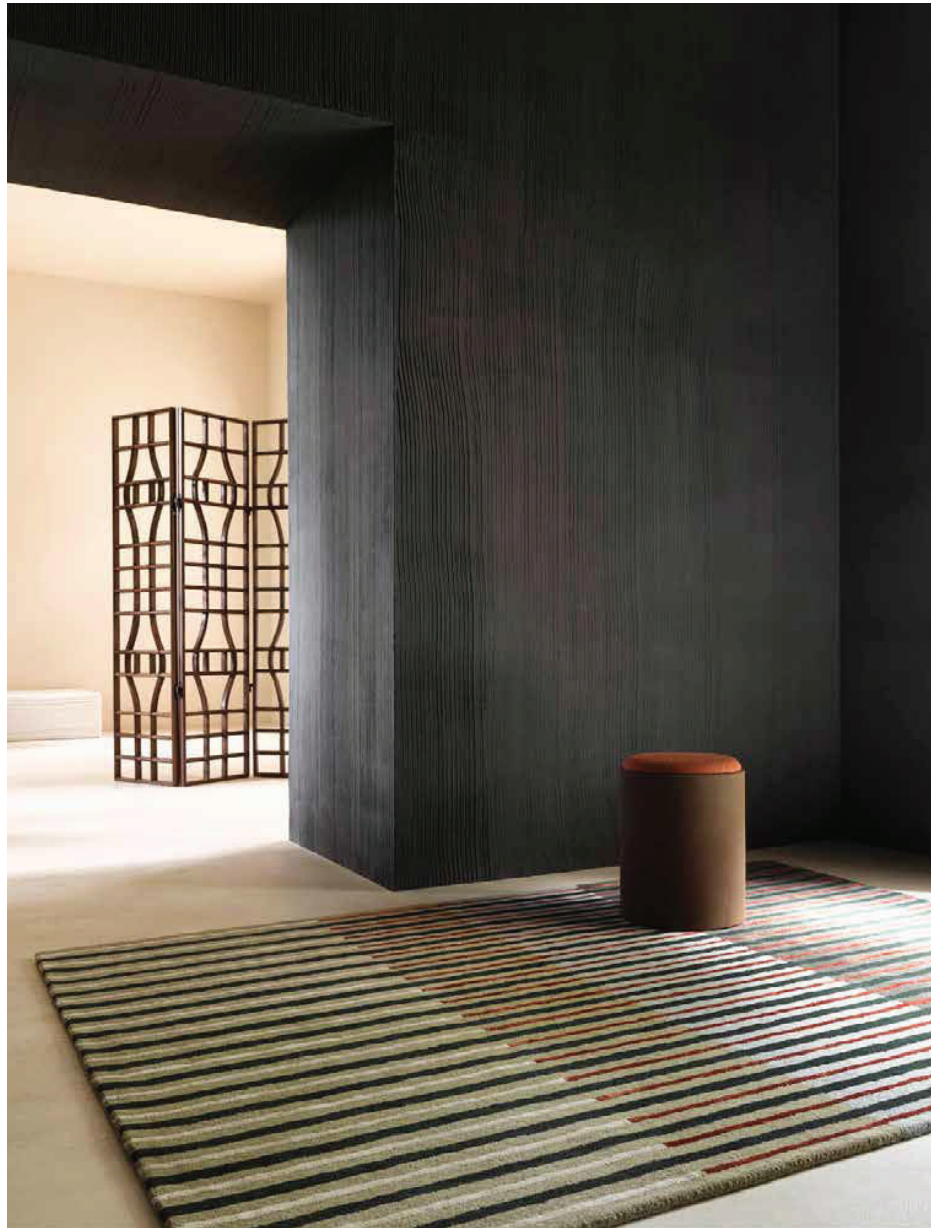
handtufted - pure new wool  
total weight ca 4500 gr/m<sup>2</sup>  
pile weight ca 2500 gr/m<sup>2</sup>  
pile height ca 12 mm  
available sizes:  
140x200 cm 4'7" x 6'7"  
160x230 cm 5'3" x 7'6"  
200x280 cm 6'7" x 9'2"  
250x350 cm 8'2" x 11'6"  
custom sizes on request

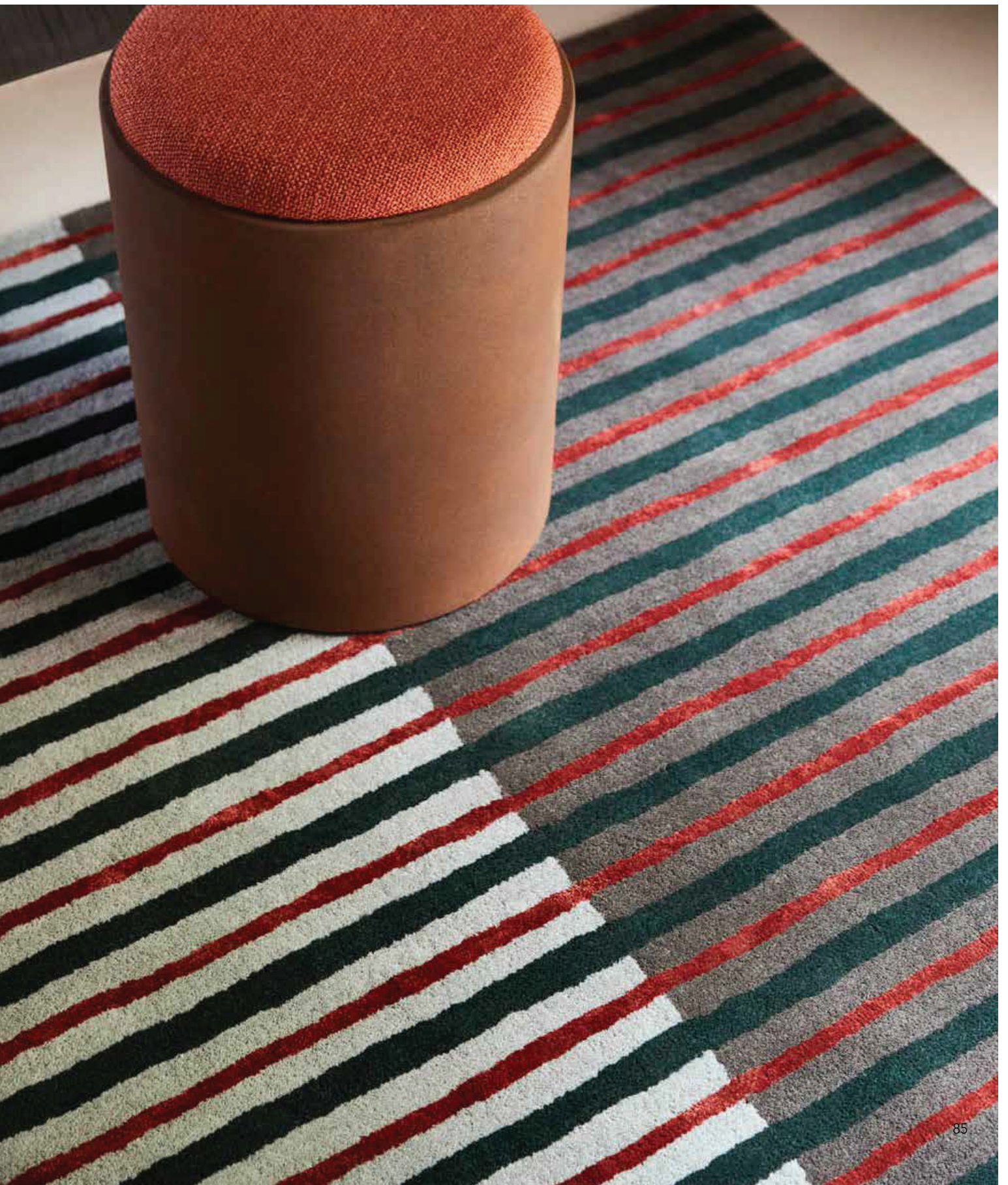


Lola 095403

# Decor | Proof

handtufted - pure new wool & viscose  
total weight ca 4500 gr/m<sup>2</sup>  
pile weight ca 2500 gr/m<sup>2</sup>  
pile height ca 12 mm  
available sizes:  
140x200 cm 4'7" x 6'7"  
160x230 cm 5'3" x 7'6"  
200x280 cm 6'7" x 9'2"  
250x350 cm 8'2" x 11'6"  
custom sizes on request









# Decor | Miller spring & fall

handtufted - pure new wool  
total weight ca 4500 gr/m<sup>2</sup>  
pile weight ca 2500 gr/m<sup>2</sup>  
pile height ca 12 mm  
available sizes:  
140x200 cm 4'7" x 6'7"  
160x230 cm 5'3" x 7'6"  
200x280 cm 6'7" x 9'2"  
250x350 cm 8'2" x 11'6"  
custom sizes on request



Miller spring 095108



Miller fall 095105

# Decor | Cosmo greens & red pale green

handtufted - pure new wool  
total weight ca 4500 gr/m<sup>2</sup>  
pile weight ca 2500 gr/m<sup>2</sup>  
pile height ca 12 mm  
available sizes:  
140x200 cm 4'7" x 6'7"  
160x230 cm 5'3" x 7'6"  
200x280 cm 6'7" x 9'2"  
250x350 cm 8'2" x 11'6"  
custom sizes on request



88 Cosmo greens 095207



Cosmo red pale green 095203





# Decor | B&C Kids

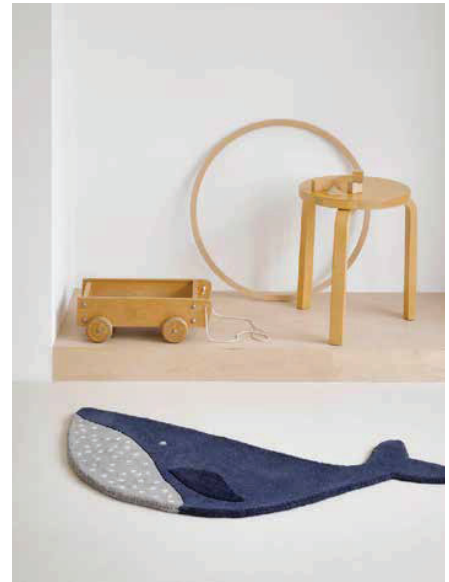
handtufted - pure new wool  
total weight ca 4500 gr/m<sup>2</sup>  
pile weight ca 2500 gr/m<sup>2</sup>  
pile height ca 12 mm



Bird 141201 | 90 x 80 cm



Lion 141403 | 80 cm round



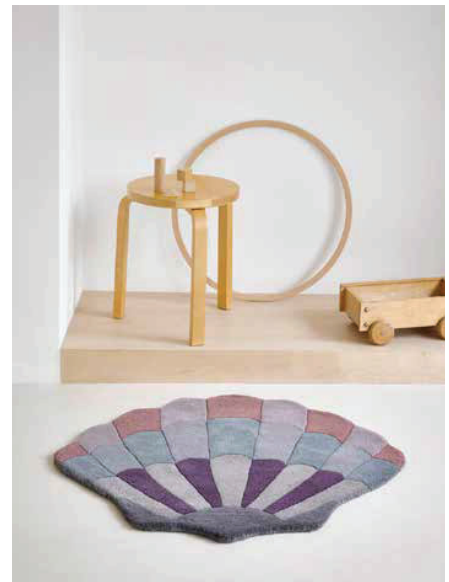
Whale 141608 | 105 x 60 cm



Planet 141508 | 120 x 75 cm



Shell powder 141302 | 90 x 80 cm



Shell lilac 141308 | 90 x 80 cm





# Yeti | Anapurna

handknotted | 60 knots - pure new wool & viscose

total weight ca 4000 gr/m<sup>2</sup>

pile weight ca 3400 gr/m<sup>2</sup>

pile height ca 9 mm

available sizes:

140x200 cm 4'7" x 6'7"

170x240 cm 5'7" x 7'10"

200x300 cm 6'7" x 9'8"

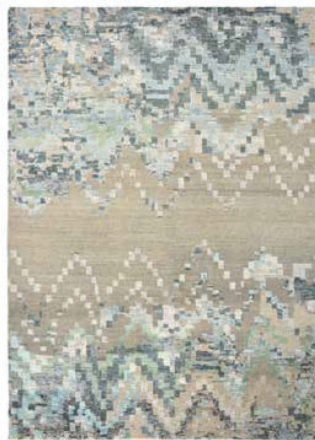
250x350 cm 8'2" x 11'6"

custom sizes on request

\* made out of recycled yarn scraps therefore colors may differ slightly



94 Anapurna 51901



Anapurna 51904







# Estella

handtufted - pure new wool & viscose

total weight ca 4500 gr/m<sup>2</sup>

pile weight ca 2500 gr/m<sup>2</sup>

pile height ca 12 mm

available sizes:

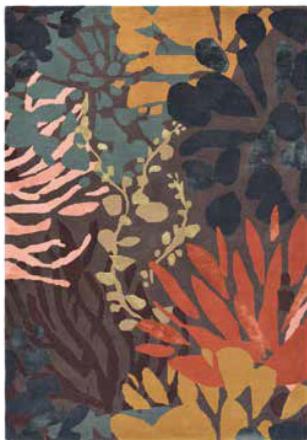
140x200 cm 4'7" x 6'7"

160x230 cm 5'3" x 7'6"

200x280 cm 6'7" x 9'2"

250x350 cm 8'2" x 11'6"

custom sizes on request



Submarine 89405



Submarine 89408

# Estella

handtufted - pure new wool  
total weight ca 4500 gr/m<sup>2</sup>  
pile weight ca 2500 gr/m<sup>2</sup>  
pile height ca 12 mm  
available sizes:  
140x200 cm 4'7" x 6'7"  
160x230 cm 5'3" x 7'6"  
200x280 cm 6'7" x 9'2"  
250x350 cm 8'2" x 11'6"  
custom sizes on request



98

Vases 089502



Domino 83901



# Estella

handtufted - pure new wool & viscose  
total weight ca 4500 gr/m<sup>2</sup>  
pile weight ca 2500 gr/m<sup>2</sup>  
pile height ca 12 mm  
available sizes:  
140x200 cm 4'7" x 6'7"  
160x230 cm 5'3" x 7'6"  
200x280 cm 6'7" x 9'2"  
250x350 cm 8'2" x 11'6"  
custom sizes on request



Carnaval 85005

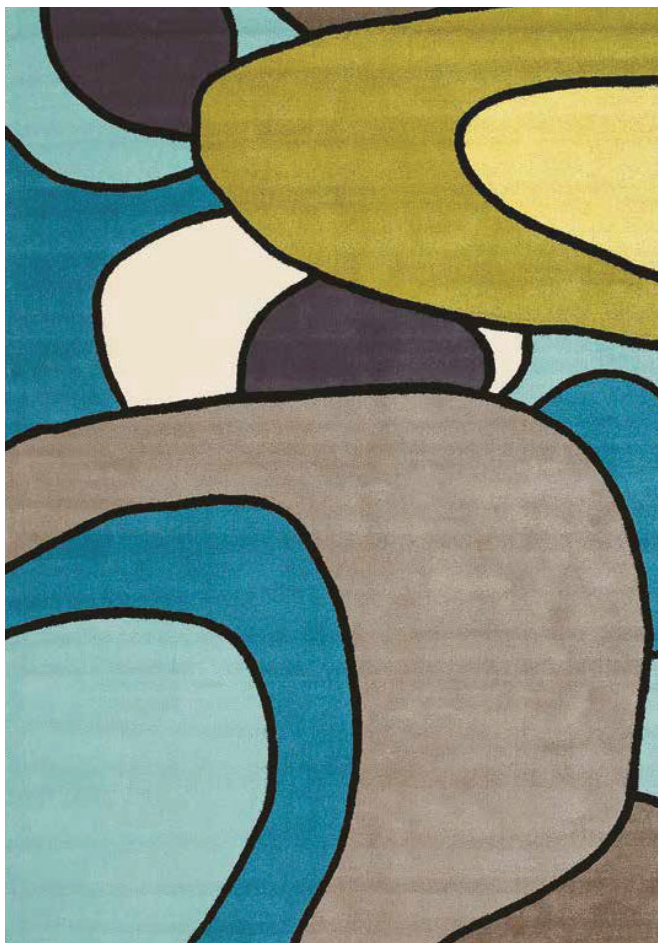


# Estella

handtufted - pure new wool  
total weight ca 4500 gr/m<sup>2</sup>  
pile weight ca 2500 gr/m<sup>2</sup>  
pile height ca 12 mm  
available sizes:  
140x200 cm 4'7" x 6'7"  
160x230 cm 5'3" x 7'6"  
200x280 cm 6'7" x 9'2"  
250x350 cm 8'2" x 11'6"  
custom sizes on request



Moonlight 878305



Comic 875008





# Brands

In addition to our own unique B&C collection, we develop and produce collections for worldwide renowned brands in the home interior and fashion world.

Our design studio works closely with the designers of these brands to ensure that together we can create highly recognizable collections. Each brand has its own distinctive style and goes through individual developments that keep us motivated to develop the most beautiful collections. The cooperation with these brands ensures that we can proudly offer a wide range of rugs where, just as with the B&C collection, quality and eye for detail are of great importance.



# Wedgwood



Folia 2.0 round mink  
038902



Folia 2.0 round cool grey  
038904



Folia round stone  
38301



Folia round grey  
38305



Folia mink  
038902



Folia 2.0 cool grey  
038904



Folia stone  
38301



Folia grey  
38305



Waterlily midnight pond  
038608



Waterlily round midnight pond  
038608



Waterlily dusty rose  
038602



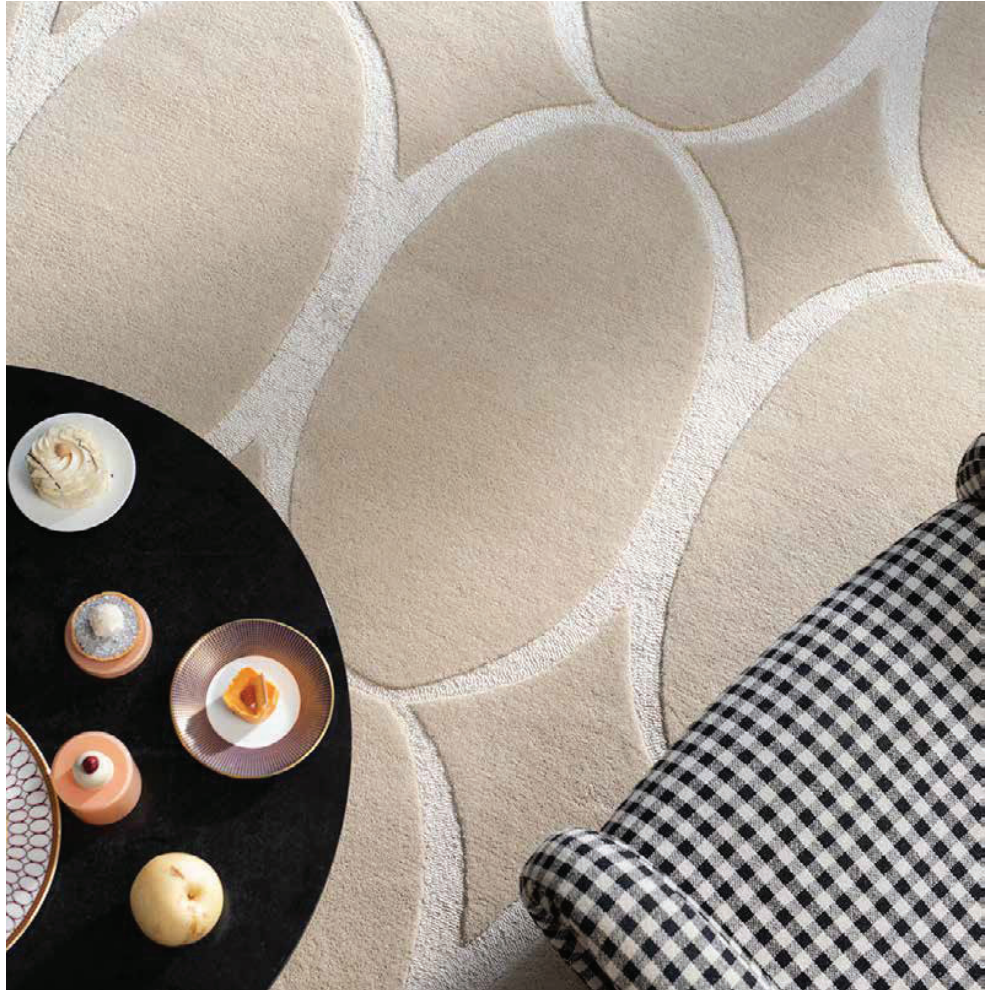
Waterlily round dusty rose  
038602



Renaissance beige  
039001



Renaissance blue  
039008



106 Hummingbird grey  
037804



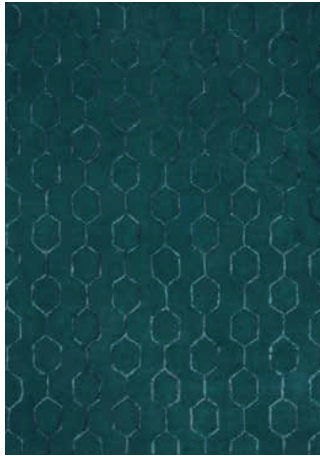
Hummingbird blue  
037808



Hummingbird navy  
037818



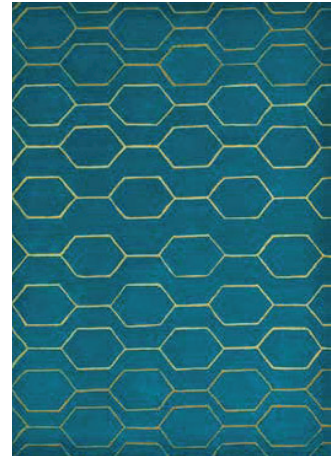
Gio mineral  
039108



Gio teal  
039107



Gio noir  
039105



Arris teal  
37307



Wild Strawberry tonal  
38201



Wild Strawberry cream  
38108



Paeonia coral  
37902



Arris grey  
37304



Fabled Floral grey  
37504



Fabled Floral navy  
37508



Tonquin blue  
37008



Tonquin charcoal  
37005



# Morris & Co



Acanthus 126904  
Mole



Acanthus 126900  
Forest



Artichoke 127105  
Charcoal Mustard



Artichoke 127103  
Amber Charcoal



Artichoke 127108  
Mineral



Bullerswood 127308  
Indigo Red



Bullerswood 127301  
Stone Mustard



Bullerswood 127300  
Red Gold



Bullerswood 127305  
Charcoal Mustard



Wilhelmina 127401  
Linen Mustard



Wilhelmina 127400  
Russet



Snakeshead 127208  
Indigo



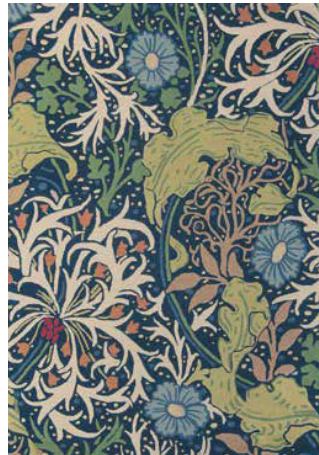
Snakeshead 127207  
Thistle Russet



Seaweed 127006  
Charcoal Mustard



Seaweed 127008  
Teal



Seaweed 28008  
Ink



Snakeshead 127200  
Chocolat Spice



Strawberry Thief 027700  
Crimson



Strawberry Thief 027708  
Indigo



Strawberry Thief 027718  
Slate



Pure Strawberry Thief  
028105 Ink



# Morris & Co



Pimpernel 028805  
Aubergine



Pimpernel 028808  
Bullrush



Pure Pimpernel 028701  
Linen

# Ted Baker



Shaped magnolia light pink  
162302



Shaped magnolia burgundy  
162303



Linear floral blue  
162508



Feathers natural  
162404



Landscape toile light pink  
162602



Landscape toile light blue  
162608



Baroque yellow  
162906



Baroque pink  
162902



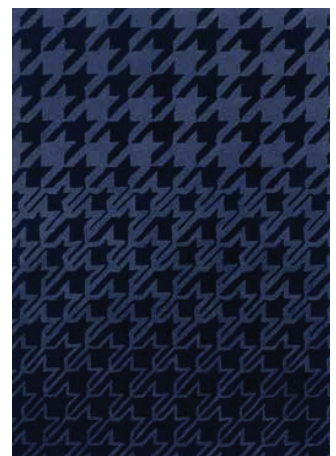
Woodblock grey  
163001



Woodblock red  
163003



Houndstooth grey  
162804



Houndstooth dark blue  
162808





Zodiac Aries  
161105



Zodiac Taurus  
161205



Zodiac Gemini  
161305



Zodiac Cancer  
161405



Zodiac Leo  
161505



Zodiac Virgo  
161605



Zodiac Libra  
161705



Zodiac Scorpio  
161805



Zodiac Sagittarius  
161905



Zodiac Capricorn  
162005



Zodiac Aquarius  
162105



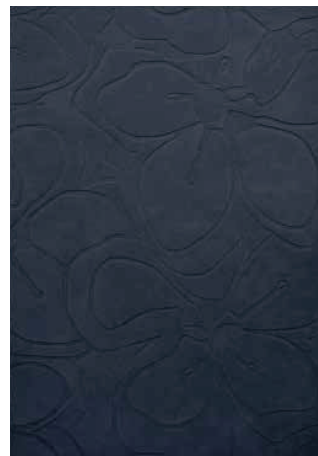
Zodiac Pisces  
162205



Romantic magnolia cream  
162701



Romantic magnolia pink  
162702



Romantic magnolia dark blue  
162708



Tranquility beige  
56001



Tranquility aubergine  
56005



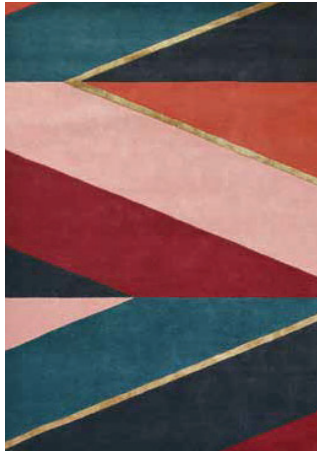
Tranquility round beige  
56001



Tranquility round aubergine  
56005



Sahara pink  
56102



Sahara burgundy  
56105



Sahara round pink  
56102



Sahara round burgundy  
56105



Mosaic light purple  
057605



Plaid grey  
057804



Kinmo pink  
056802



Kinmo green  
056807



Masquerade blue  
160008



Masquerade round blue  
160008



Jardin pink  
160902



Jardin blue  
160908

# Harlequin



Dahlia Coral | Wilderness  
142408



Dahlia Fuchsia | Palm  
142402



Atoll Hempseed | Shell  
142504



Atoll Auburn | Stone  
142500



Melora hempseed | Exhale  
Gold 142701



Melora Positano | Succulent |  
Gold 142702



Popova Caramel | Slate | Shell  
143101



Popova Amazonia | Sea glass |  
Forest | Japanese Ink 143108



Makalu Flint  
142605



Sanguine Aubergine | Palm  
Apricot | Indigo 143205

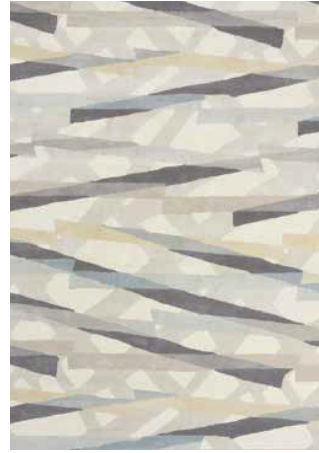




Enigmatic Pewter | Awakening  
143304



Enigmatic Sahara | Awakening  
143306



Diffinity Oyster  
140001



Diffinity Topaz  
140006



Arccos Ochre  
40205



Arccos Neptune  
40205



Zeal Pewter  
043004



Rhythm Saffron  
040906



Elliptic Emerald  
140307



Bodega Stone  
040504



Rosita Harissa  
140402



Rosita Putty  
140404



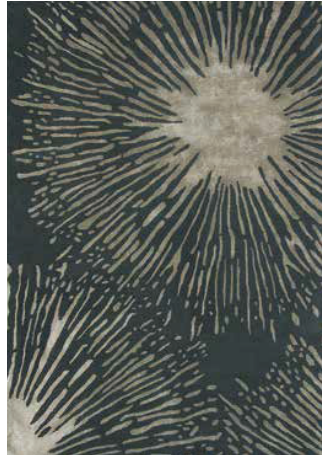
# Harlequin



Quintessence Heather  
41801



Yasuni Cerise  
040405



Shore Truffle  
040605



Floreale Maize  
44906



Floreale Fuschia  
44905



Kelapa Zest  
040307



Lulu Pebble  
44601



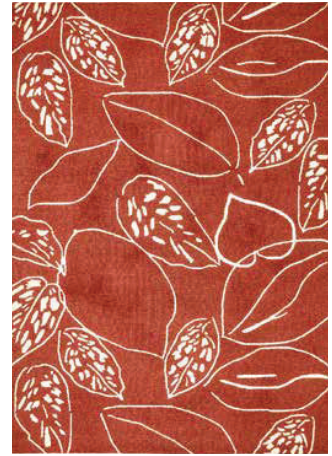
# Scion



Orto Frost  
125404



Orto Citrus  
125406



Orto Rust  
125400



Poppy Pop Parchment | Gecko  
124807



Poppy Pop Sage | Poppy  
124800



Stipa Denim  
126408



Stipa Forest  
126407



Ride the Wave Denim  
125608



Ride the Wave Liquorice  
125605



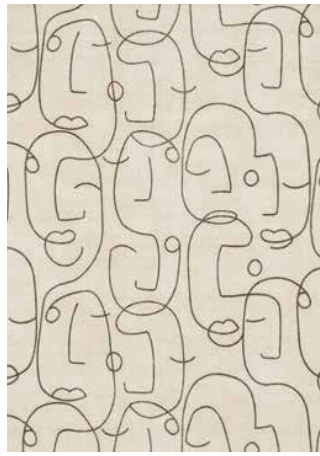
Ferns Juniper  
125907



Jackfruit and the beanstalk  
Chai | Sage 125706



Leopard Dots Pebble | sage  
125206



Epsilon Charcoal  
023801



Uteki Slate  
023604



Oxalis Juniper  
025507



Composition Amber  
023701



Composition Papaya  
023706



Kelda Cobalt  
023508



Lintu Dandelion  
24405



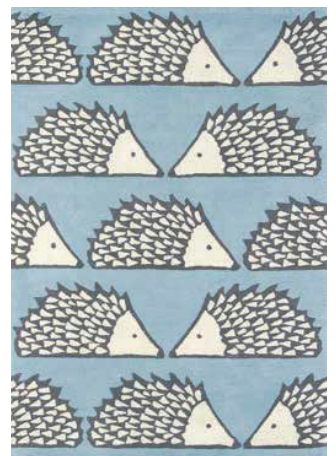
Raita Taupe  
24701



Kaleido Pop  
26000



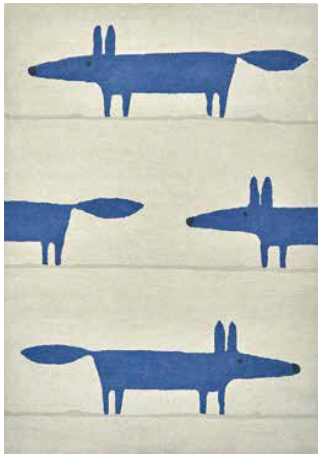
Lohko Honey  
25806



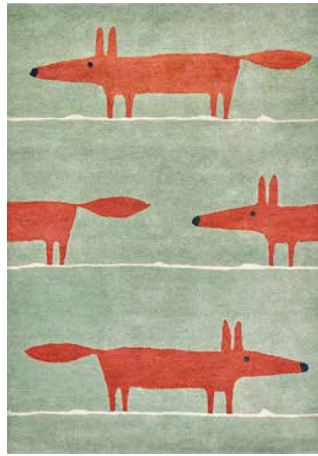
Spike Marine  
26808



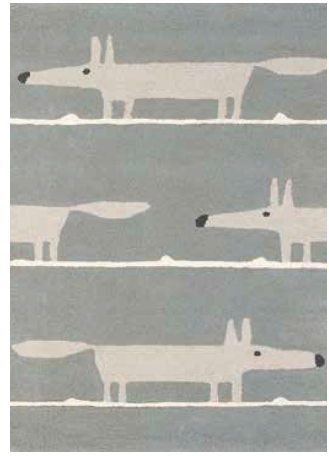
Viso Denim  
24008



Mr Fox Pebble I Denim  
025328



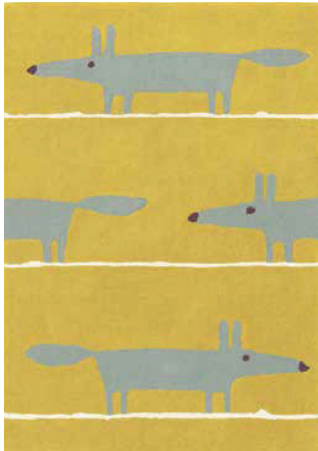
Mr Fox Mint I Poppy  
025313



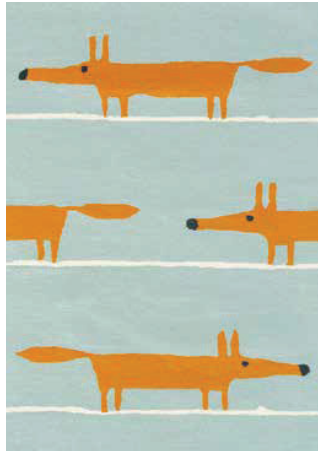
Mr Fox Silver  
25304



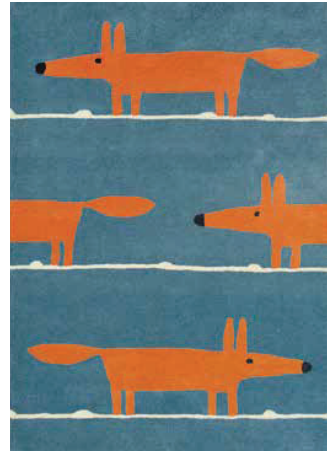
Mr Fox Cinnamon  
25303



Mr Fox Mustard  
25306



Mr Fox Aqua  
25308



Mr Fox Denim  
25318



# Orla Kiely



Flower tomato  
061303



Flower sunshine  
061306



Flower forest  
061307



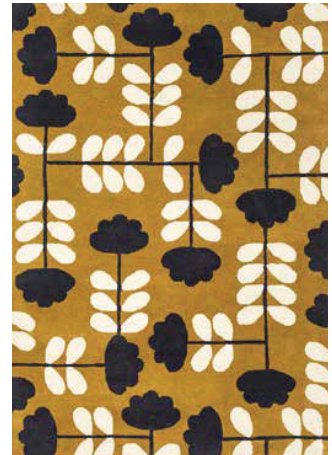
Cut Stem multi  
061405



Puzzle Flower slate  
060905



Giant sixties stem tomato  
060703



Cut stem dijon  
060806



Geo Flower graphite  
060605



Flower Stem granite  
059806



Giant multi  
061606



Multi stem  
061506

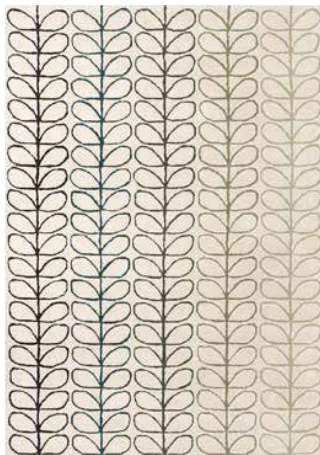
# Orla Kiely



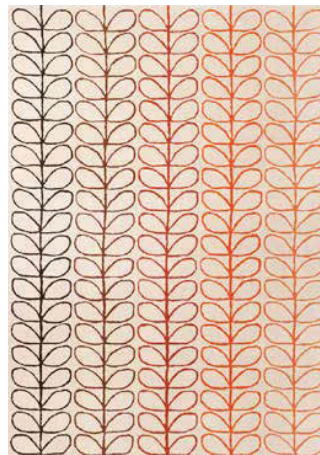
Optical flower dandelion  
061206



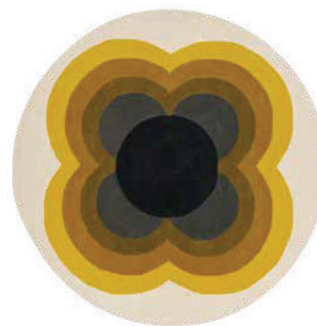
Optical flower teal  
061207



Linear Stem ombre basil  
061107



Linear stem ombre tomato  
061103



Sunflower Yellow  
060006



Sunflower Pink  
060005



Stem black  
059803



Yellow Stem  
059306



Giant Linear Stem  
059404



Giant Multi Stem  
059205





Classic Multi Stem  
059505



Multi Stem Kingfisher  
059507



Linear Stem Slate  
060505



Spot Flower Multi  
060404



# Sanderson



Ishi 146004  
Slate | Charcoal



Ishi 146000  
Red | Charcoal



Cantaloupe 145204  
Pebble



Cantaloupe 145206  
Ochre



Cantaloupe 145203  
Burnt Orange



Grandiflora 145604  
Grey



Amanpuri 145101  
Stone



Amanpuri 145104  
Grey | Plum



Amanpuri 145103  
Russet



Grandiflora 145607  
Olive



Indra 145808  
Ink | Ruby



Indra 145804  
Charcoal



Anthea 47107  
China Blue



Rain Forest 060708  
Tropical Nights



Elsdon 44006  
Linden



Abstract 45401  
Linden | Silver



Stapleton Park 45318  
Navy | Burnt Orange



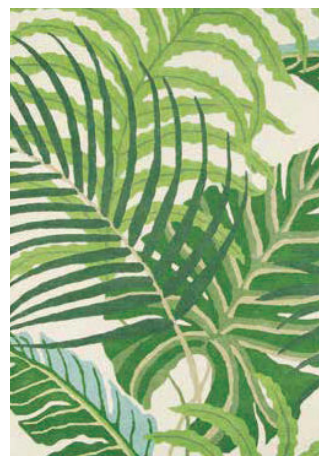
Stapleton Park 45302  
Rosewood



Dahlia & Rosehip 050608  
Teal



Rose & Peony 45005  
Cerise



Manila 46407  
Green



Poppies 45700  
Red | Orange

# Sanderson



# Florence Broadhurst



Tortoiseshell Stripe Jade  
039808



Japanese Bamboo Jade  
039507



Turnabouts Black  
039205



Turnabouts Claret  
039200



Japanese Fans Ivory  
039301



Japanese Fans Gold  
039305



132 Floral 300 Charcoal  
039604



Floral 300 Poppy  
039600



Japanese Floral Oyster  
039701



Japanese Floral Midnight  
039708



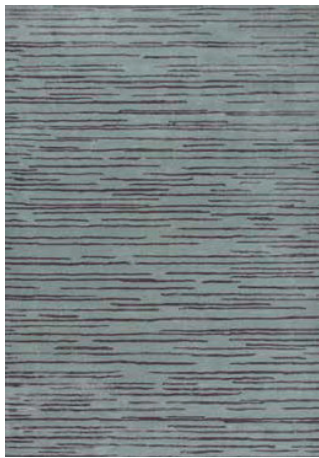
Waterwave Stripe Citron  
039906



Waterwave Stripe Pearl  
039908



Slub Mist  
039401



Slub Charcoal  
039405

# BRINK & CAMPMAN

home interiors

Albert Schweitzerstraat 3  
7131 PG Lichtenvoorde | the Netherlands  
tel +31 (0)544 390 400  
brinkandcampman.com  
info@brinkandcampman.com



## Sales offices

the Netherlands:	tel + 31 (0)544 390 431
Europe:	tel + 31 (0)544 390 429
Germany, Austria, Switzerland:	tel + 31 (0)544 390 430
Americas, Asia, Africa, Oceania:	tel + 31 (0)544 390 428

## The Netherlands, Germany, Austria & Switzerland

Robert Apeldoorn  
m +31 (0)6 101 329 64  
rapeldoorn@brinkandcampman.com

## Export

Jasper Kempers  
m +31 (0)6 128 157 72  
jkempers@brinkandcampman.com

We have partners in the following countries:

Australia	Greece	Portugal
Austria	Hong Kong	Romania
Azerbaijan	Hungary	Russia
Belgium	Ireland	Serbia
Bolivia	Italy	Singapore
Brazil	Japan	Slovakia
Bulgaria	Kazakhstan	South Africa
Canada	Korea	South-East Asia
China	Kuwait	Spain
Colombia	Latvia	Sweden
Czech Republic	Lithuania	Switzerland
Denmark	Malta	Ukraine
Estonia	Mexico	United Kingdom
France	New Zealand	USA
Finland	Norway	
Germany	Poland	





## Colofon

### **editorial**

Studio Brink & Campman

### **collection design**

Studio Brink & Campman

### **photography**

Studio Floor Knaapen

Alexander van Berge

Studio Sterkenburg

David in den Bosch

### **styling**

Studio Floor Knaapen

Studio Brink & Campman

### **graphic design**

Studio Brink & Campman

### **print**

SMG Groep

We take reservations for printing errors,  
colour differences, or changes in the collections.

All rights are reserved.

© 2022 Brink & Campman







Albert Schweitzerstraat 3  
7131 PG Lichtenvoorde | the Netherlands  
tel +31 (0)544 390 400  
brinkandcampman.com  
info@brinkandcampman.com

