



Goodrich Global
SINCE 1983



CREATUFT

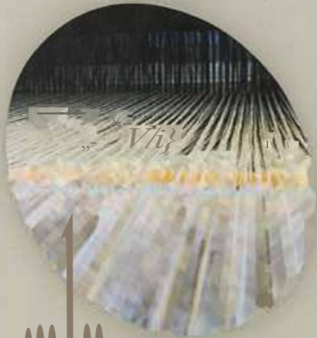
CREATIVE WOOL FLOORING



Creatief met wol • Savoir-faire en laine • Runs on wool • Kreativ mit Wolle



Onze basis: zuivere scheerwol
Laine : notre point de depart
Wool: our starting point
Wolle: unsere Quelle



Duurzaam beleid van grondstof tot eindproduct
Fabrique avec nos plus grands soins
Care and consideration in manufacture
Mit gr6sster Sorgfalt produziert



Ons eindproduct: pure luxe
Le resultat final est du pure luxe
Our end product: pure luxury
Unser Endprodukt: reiner Luxus



Bellagio,
100% pure new wool



01

4 + 5 m



35

4 + 5 m



40

4 + 5 m



25

4 + 5 m



5

4 + 5 m



Q: f } l: f- Jt 3! Jd
k n, yil: Jt 10fi: -
Bj rll . 1ll
'i /rf r in
ijl-£.l' - i
1: 1

Tufted

Titan,
100% pure new wool



Tufted

Malta,

100% pure new wool



38 4 + 5 m



5 4 + 5 m



35 4 + 5 m



3 4 + 5 m



40 4 + 5 m



4 4 + 5 m



38 4 • 5 m



Tufted

Berlin,

100% pure new wool



276

4 + 5 m



516

4 + 5 m



115

4 + 5 m



279

4 + 5 m



107

4 + 5 m

Tufted

London,
100% pure new wool



28

4 + 5 m



16

4 + 5 m



17

4 + 5 m



19

4 + 5 m



81

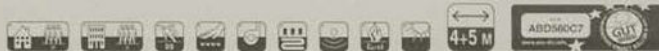
4 + 5 m



Tufted



Sydney,
100% pure new wool



199 4 + 5 m



100 4 + 5 m



1728 4 + 5 m



135 4 + 5 m



140 4 + 5 m



102 4 + 5 m



145

Tufted

Wellington, 100% pure new wool



299 4 + 5 m



200 4 + 5 m



2728 4 + 5 m



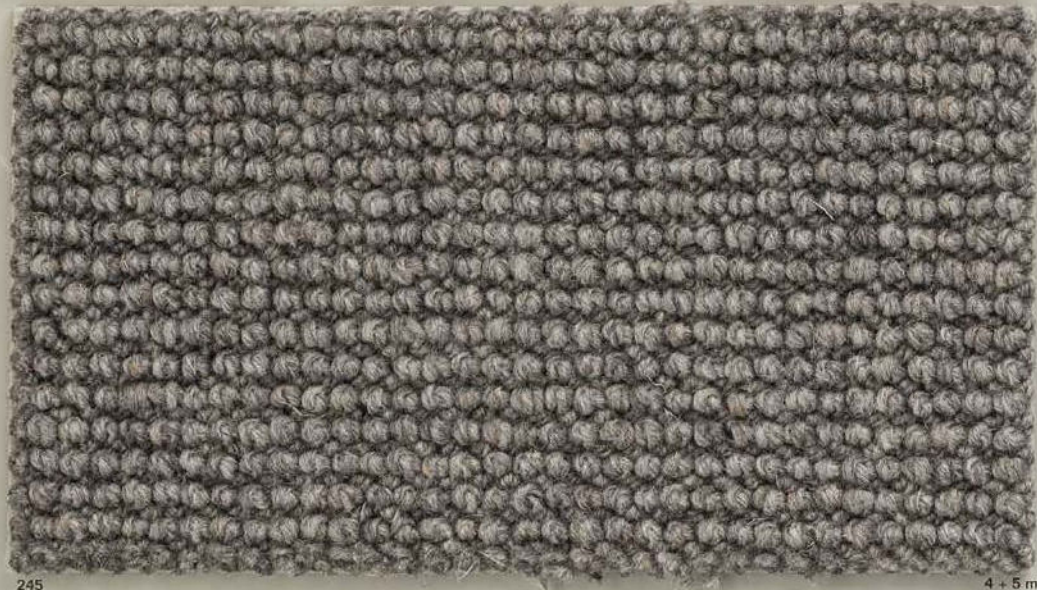
235 4 + 5 m



240 4 + 5 m



202 4 + 5 m



245 4 + 5 m



Tufted

Savanna, 100% pure new wool



1

4 + 5 m



10

4 + 5 m



5

4 + 5 m



35

4 + 5 m



40

4 + 5 m



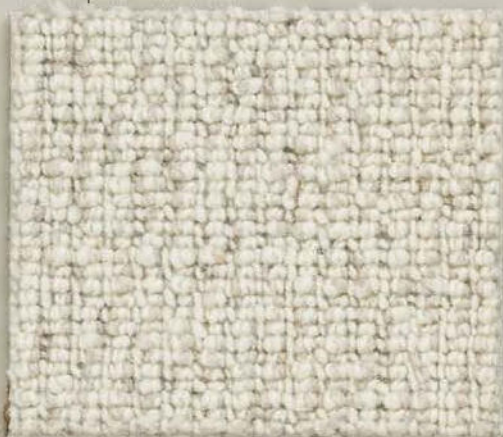
45

4 + 5 m

Tufted

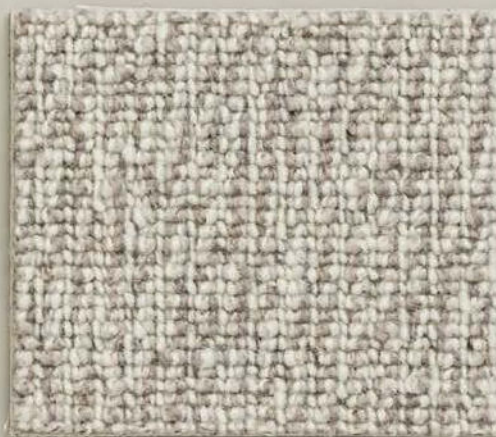
Hawa''i,

100% pure new wool



4428

4 + 5 m



4397

4 + 5 m



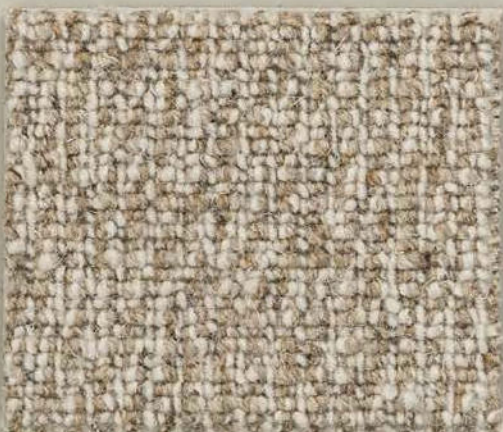
4402

4 + 5 m



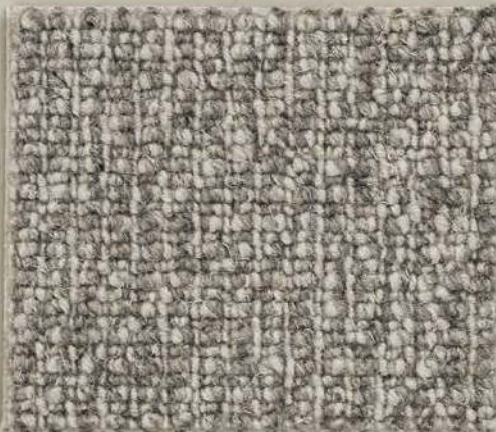
4403

4 + 5 m



4425

4 + 5 m



4398

4 + 5 m



Tufted



Tanger, 100% pure new wool



549 4 + 5 m



550 4 + 5 m



598 4 + 5 m



540 4 + 5 m



552 4 + 5 m



535 4 + 5 m



596 4 + 5 m

Tufted

Himalaya, 80% pure new wool, 19.7% PA, 0.3% bekinox
Himalaya Tiles, 80% pure new wool, 19.7% PA, 0.3% bekinox



1-4m

901-50x50cm



5-4m

905 - 50 x 50 cm



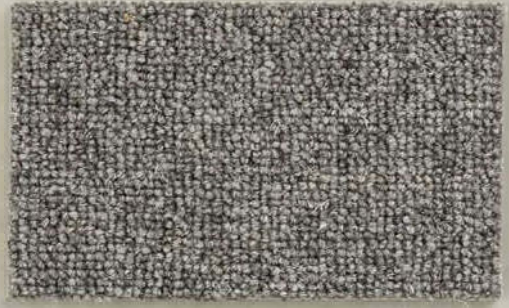
15-4 m

915-50x50cm



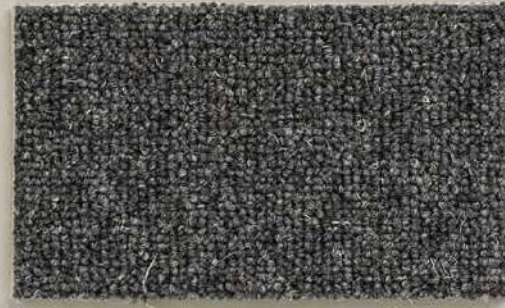
25-4m

925 - 50 x 50 cm



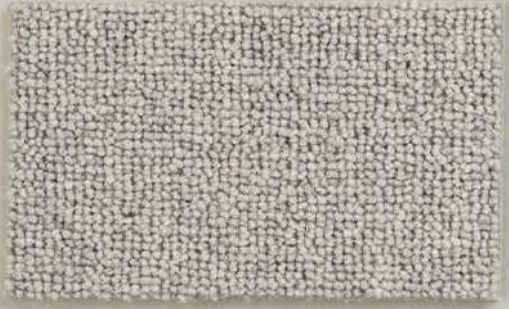
40-4m

940-50x50cm



50-4m

950 - 50 x 50 cm



35-4 m

935 - 50 x 50 cm



70 - 4 m

970 - 50 x 50 cm

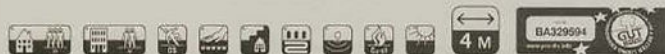


Bitumen, covered with PES fleece



Tufted

Ceres, 100% pure new wool



3761 4 m



3335 4m



3764 4 m



3333 4 m



3184 4 m



3048 4m



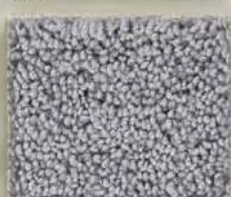
3585 4 m



3768 4 m



3013 4 m



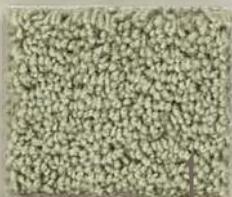
3106 4 m



3597 4 m



3350 4 m



3072 4 m



3379 4 m



3346 4 m



3089 4 m



3048 4m

Tufted

Sheba,
100% pure new wool



1599 5m



1346 4+5m



1379 5m



1072 4+5 m



1089 4+5m



1597 4+5m



1025 5m



1106 4+5m



1125 4+5m



1764 5m



1761 4+5 m



1004 4+5 m



1585 5m



1048 4+5m



1013 4+5 m



1041 5m



1045 5m



1184 4+5m



1108 5 m



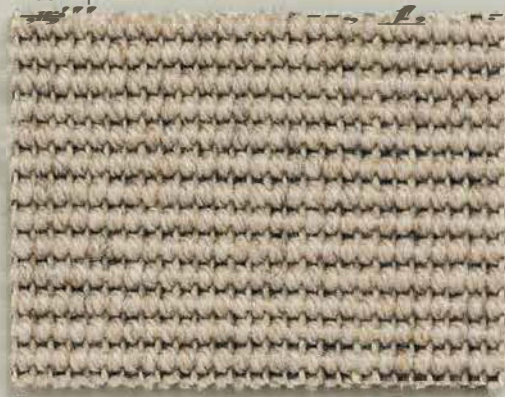
1768 4+5 m



1108 5 m

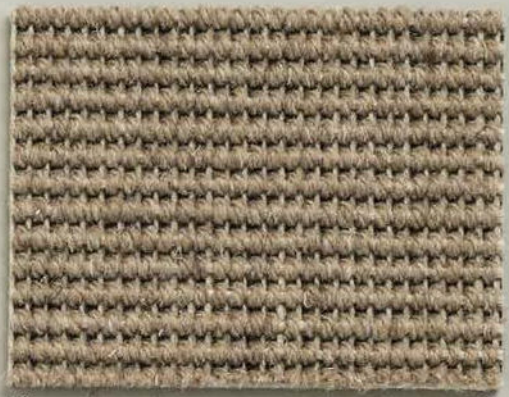


Chicago Plus, 100% pure new wool



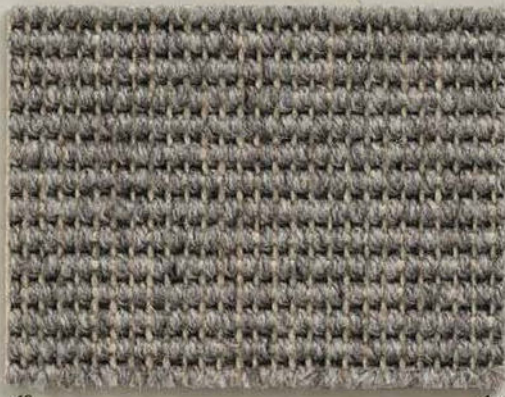
5

4 m



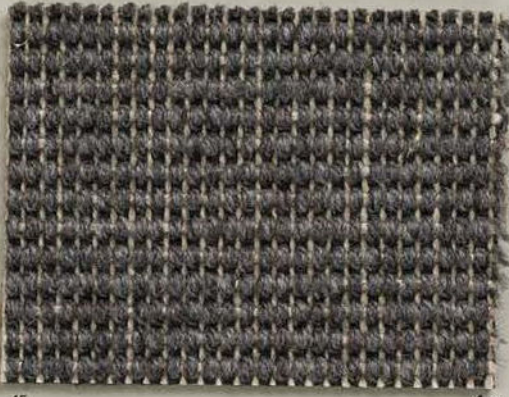
10

4 m



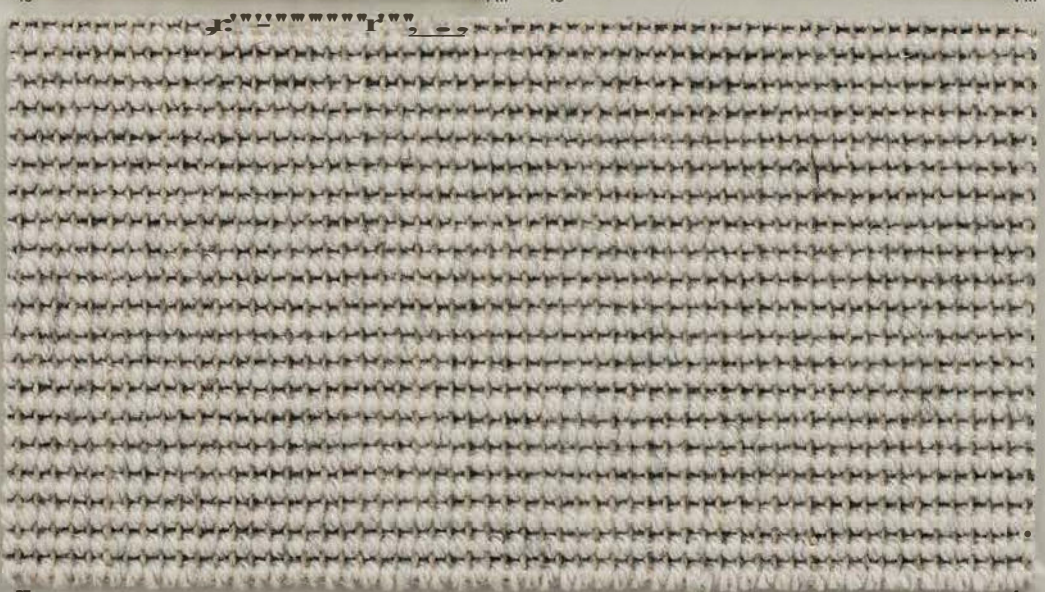
40

4 m



45

4 m



35

4m

Flat Woven

Tivoli Plus, 100% pure new wool



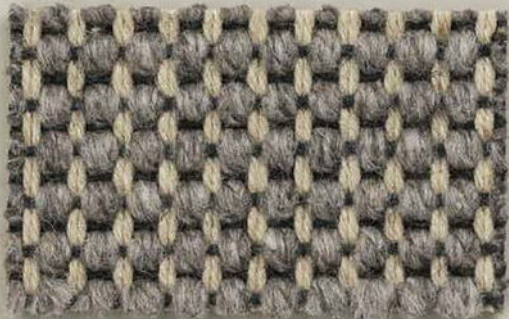
35

4 m



1

4 m



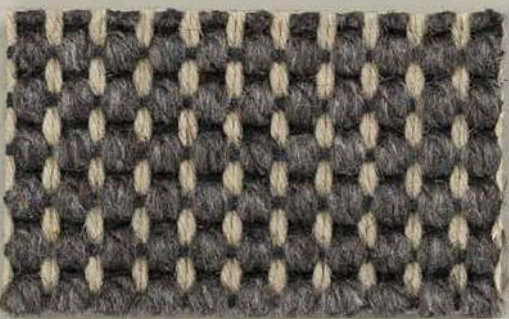
40

4 m



5

4 m



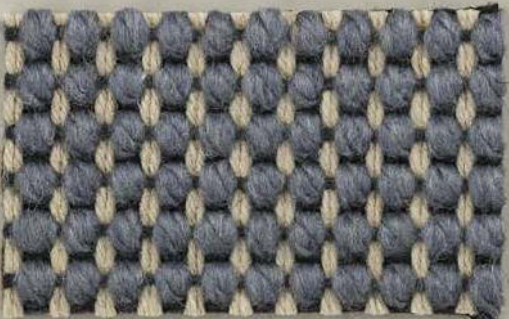
45

4 m



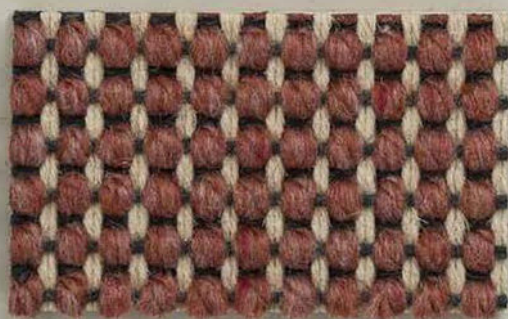
10

4 m



70

4 m



60

4 m



Flat Woven

Aspen, 100% pure new wool



5

4 m



35

4 m



40

4 m



10

4 m



1

4 m

Phoenix, 100% pure

Handwritten text: *100% pure*, *Handwritten symbols*



5

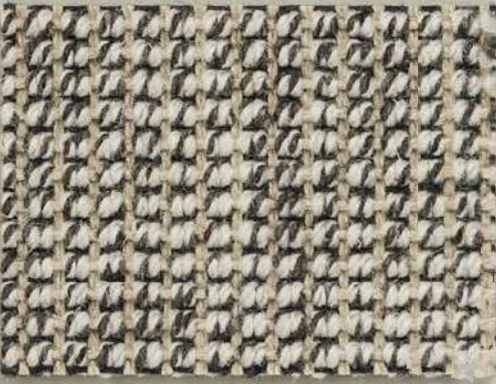
4 m

Handwritten text: *ii,*, *it*, *5 W*



21

4 m



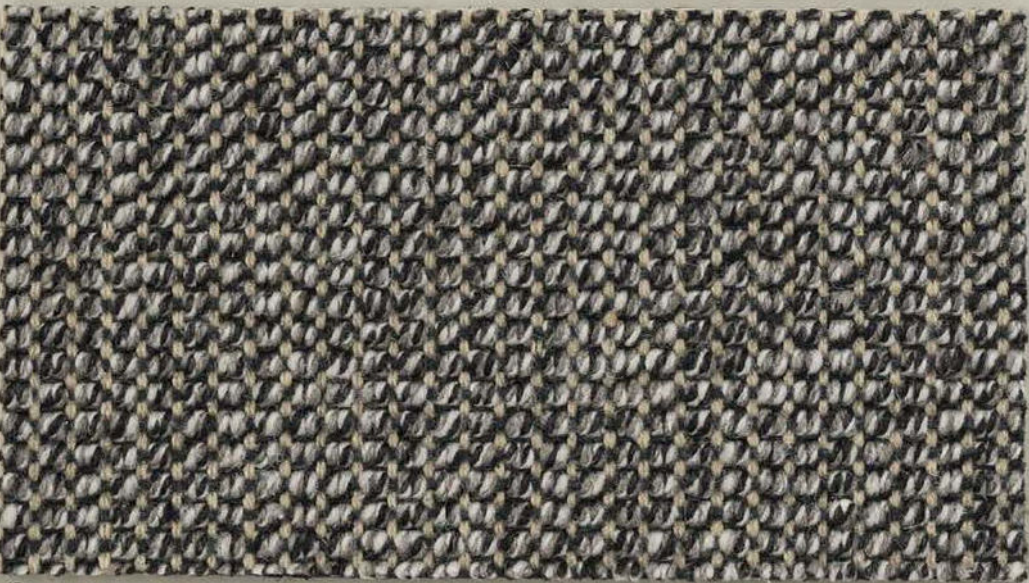
10

4 m



25

4 m



45

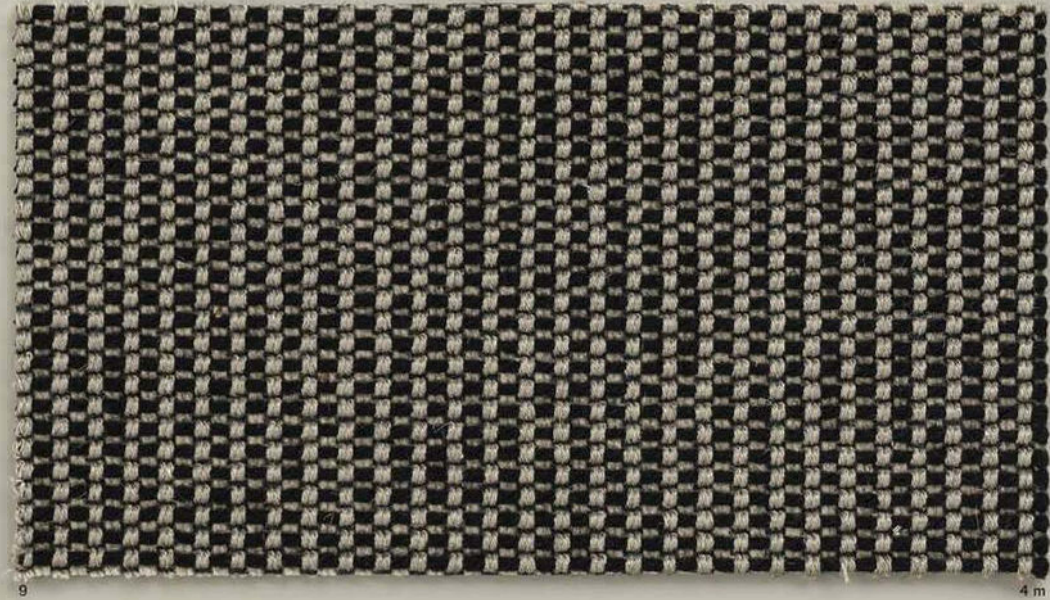
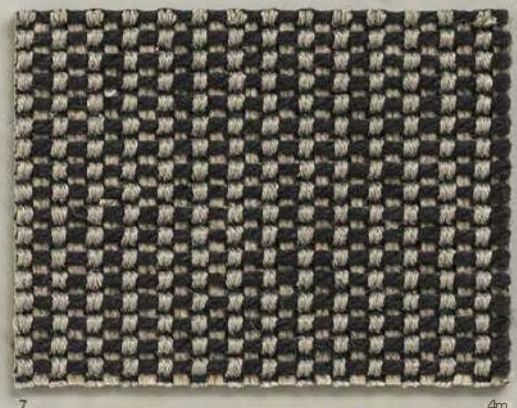
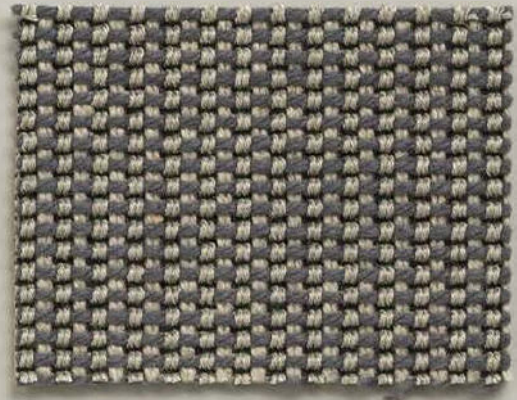
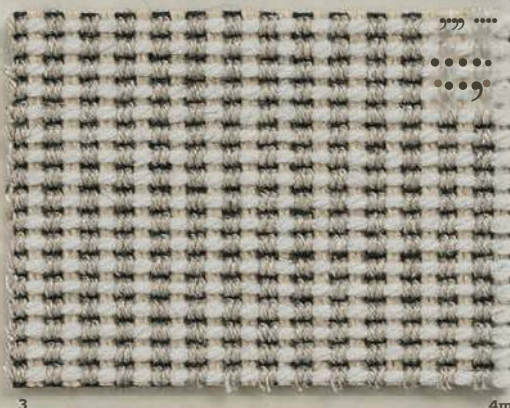
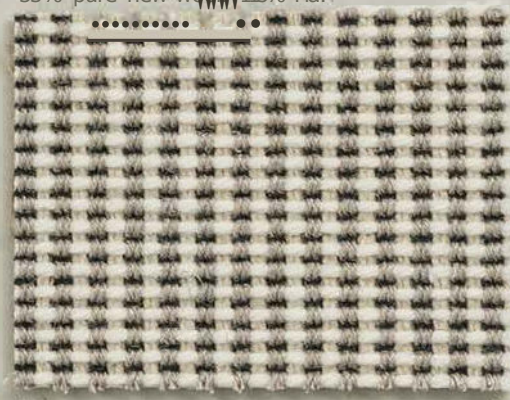
4 m



Flat Woven

Flanders,

55% pure new wool, 11% Fla:

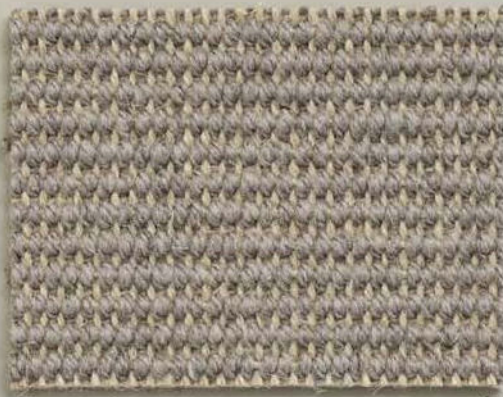


Porto,
100% pure new wool



1

4 m



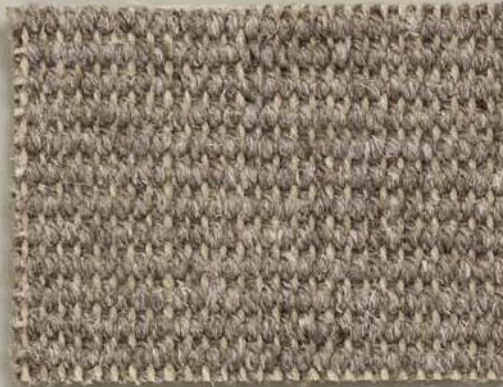
73

4 m



44

4 m



18

4 m



10

4 m



Flat Woven

Estrella,

100% pure new wool



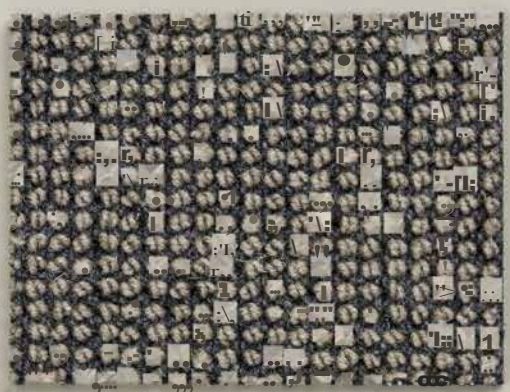
35

4m



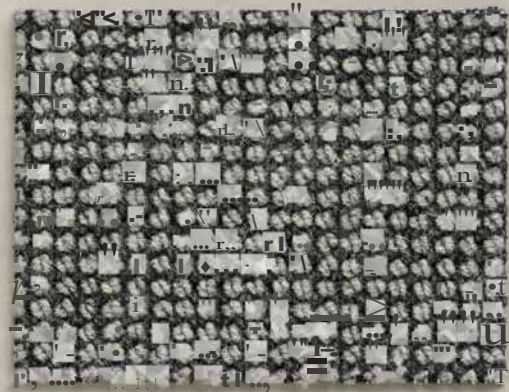
19

4m



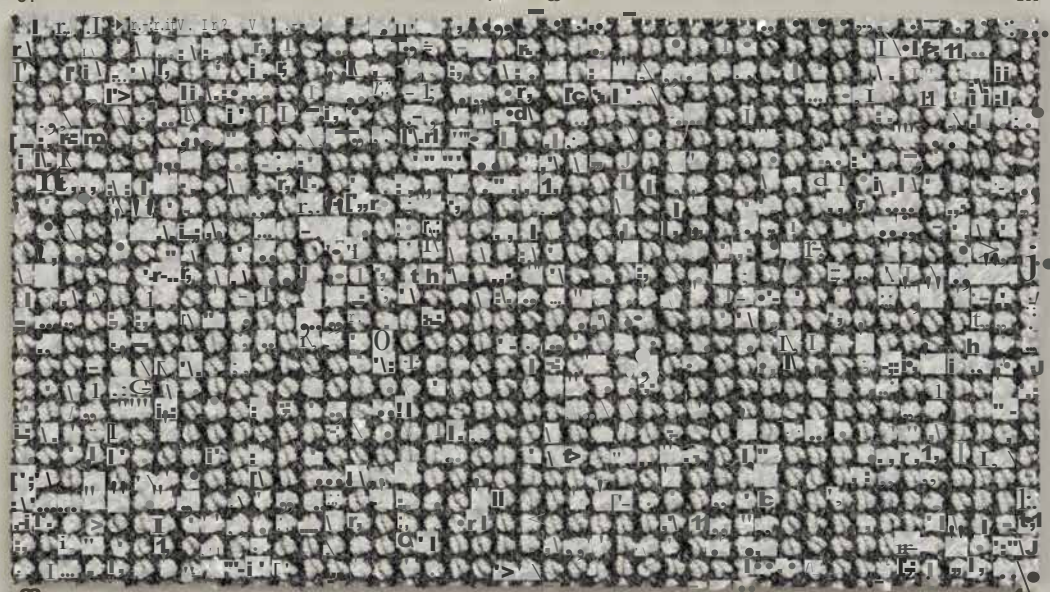
34

4m



89

4m



33

4m

Iona,
92% pure new wool. 8% linen



44

4 m



46

4 m



45

4m



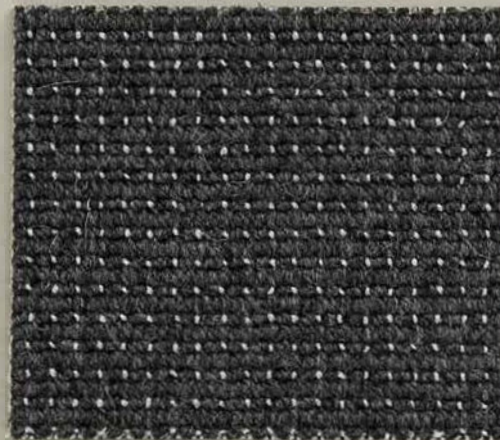
47

4 m



50

4m



49

4m



Wilton Woven



HARD BECKER PORTABLES PRINTING APPEARANCES
unfolding miniature
GENESIS



JOE COLOMBO
BLACK SCOUT WEST



Acclimatisatie: min. 24u & mm. 15°C, ONVERPAKT in de ruimte. Kopse nadeo luffi meestal niet mogelijk. Gebruik ca. 500 g/m2 polyacryl dispersieblim. Plaats NIET bij opvallende of storende optische fouten. Boucledkwalliteiten zijn goedgevoerd voor puntbelasting. Om esthetische redenen is het aangewezen rekening te houden met de richting van de ketting, die zich in de lengte, en de inslag, die zich in de breedte van het weefsel bevindt. Krimpen mogelijk: 2 % extra bestellen (min. 5 cm) is aangewezen.

Wij raden ondertapij aan bij plaatsing op trappen,

Acclimatisation: DESALLE min. 24h & 15°C aux conditions atmosphériques locales. Joins aux abords ne sont pas possible chez la plupart des qualifiés. Employez une colle dispersion polyacrylique (ca. 500 g/m²). En cas de gros défauts optiques NE PAS poser le tapis. Des qualités bouclées sont sensibles à charge sur un point. Pour des raisons esthétiques il est recommandé de tenir compte de la largeur de fabrication et de retrouver la chaîne dans la longueur et la trame dans la largeur du tapis. Peut se rétrécir. Il est recommandé commander 2 % extra (5 cm m.n.). Nous recommandons l'usage d'un sous-tapis lors de la pose sur escaliers.

Acclimatisatie: min. 24 h & 15°C UNWRAPPED at the local conditions. Most qualities can not be joined crossed (avoid crosscut seams). Use a polyacryl glue, ca. 500 g/m². If optical flaws are too striking, DO NOT install the carpet. Boucled qualities are sensitive to point load. The direction of the weave is important. Please ensure that the warp is in the width and the warp in the length of the rug. Shrinkage is possible: therefore order 2 % extra (min. 5 cm). We recommend underlay/Vilfen instaling on stairs.

Ankhamatisierung, mindestens 24 Std. bei 15°C UNVEAPAKT vor Ort. Quernahte sind nicht möglich bei den meisten Qualitäten. Verwenden Sie ein Polyacryl (ca. 500 g/qm). Bei starken optischen Ungenauigkeiten, den Teppichboden NICHT vorlegen. Boucled Qualitäten sind empfindlich für punktuelle Belastung. Aus optischen Gründen empfehlen wir die Struktur des Teppichbodens (Kette in der Länge und Schuss in der Breite) zu berücksichtigen. Kann schrumpfen: bestellen Sie dann auch 2 % extra (min. 5 cm). Bei Verlegung auf Treppen wird ein Unterteppich empfohlen.

ONDERHOUDSINSTRUCTIES / NOTICE D'ENTRETIEN / MAINTENANCE INSTRUCTIONS / PFLEGEANLEITUNG SISAL/ KOKOS, COCOS, COIA, KOKOS / WOL, LAINE, WOLLE, WOOL

Drage poedershampoo, 2x per Jaar | Shampooing en poudre: 2x par an / Powdred shampoo, 2x a year / Pulverisiertes Shampoo, 2x m Jahr

Probeer vlekken eerst te verwijderen d.m.v. een uitgewrongen doek gedrenkt in water+ een sterk verdunde shampoo. / Essayez d'abord d'enlever la tache au moyen d'un chiffon essore trempé dans le shampooing très dilué dans l'eau. | First, try to remove the stain by using a wrung out cloth that was drenched in shampoo diluted in some water/

Versuchen Sie zuerst die Flecken mit einem wasserverdünnten Shampoo zu entfernen.

VLEKKENOVERZICHT / PLAN ANTI-TACHES / STAIN REMOVAL CHECKLIST/ ANLEITUNG ZUR FLECKENTERNUNG

Bloed / Sang / Blood/ Blut	1	4	3	5
Soter / Baune/ Butter / Butter	6	1	2	3
Braaksel / Vomissement /Vomit/ Auswurf	1	7	4	
Chocolade / Chocok1t/ Chocolate / Schokolade	4	7		
Confituur / Confituro /Jam/ Konfiture	4	7		
Oranken / Boissons / Beverages / Getrânke	1	2	3	
Ei / Ciul/ Egg/ Ei	8	1	2/4	
Honig / Miol / Honey Honig	4	7		
Kaarsvot /Bougie/ Candle wax/ Kernenwachs	6	1	2	3
Kauwgom / Chewing-gum / Chewing gum / Kaugummi	10			
Koffie / Cafe / Coffee / K-Biese	8	1	2/4	
Ulkverf Peinture de laque Lacquer/ Lack	9			
Ijm voor tûlpijten / Colle pour tapis Carpet glua / leim für Teppiche	12			
Lippenstift / Rouge à lèvres / Lipstick Lippenstift	1	3		
Latexverf / Peinture au latex Latex paint/ Latexfarbe	3	1	11	
Madder / Boue / Mud / Dreck	11	7	4	
Nagellak /Vernis à ongles / Nail polish/ Nagellack	12			
Rode wijn / Vin rouge / Red wine / Rotwein	8			
Schimmel / Moisissure / Mould / Schimmel	4	7		
Thèe Tee Tea/ Thee	8	1	2/4	
Vet/ Graisse / Grease / Fett	15	1	2	3

1 = 20 .. shampoo / de shampooing / shampoo / Shampoo

2 = 5 g / de vinaigr / Vloagr / Essig

3 = 75 % lau water/ de reau todo / lukawarm water / Uluwa(mes Wasser

4 = 5% ammoniak / ammoniac / ammonia / Ammoniak

5 = nld n n mel afth / pu / tamponner avec du Vinaigr / thm d'ib with vinegar / Wleth mit Essig abwischen!

6 = warmte (100°C) op n doek / Passer au le-chaud <<100°C) su. unctuffion /

a hot iron (< 100°C) on f cloth / Heißes Bügelsisen (< 100°C) auf einem Tuch

7 = 95 % lau water/ de reau bode / lukewarm water / Lauw(mes Wasie,

8 = 75 % koud water/ eau froide / cold water / Kaltes Wasser

9 = deppen met white spirit / lampowor auwhite spirit/ dab with white spirit / Tupfen mit Terpentin

10 = special product voor VMLC111g Chewtrem / nettoyant polym chewinggum / (thChewtrem / Chewing gum remove, (reinigung tisan) / gummi / Entferner / Verleisongsmittel)

11 = ra drogen / schmpen | M verwOeren / ap,ts f(tchoga. gmiter et bOser / nleff) dr'ing, scraps off acid vacuum / Mch Trocklung, abwshpn und tûlsingen

12 = met acetone of alcohol / tamponner f' acetone or alcohol / dab with acetone or alcohol / tupfen mit Acetone oder Alkohol

13 = onnd(fell)ke est: 50 % ozijl t SO₂ water / acion / mntf01, 50 % de vinaigr + 50 % d'oo / Immedrae action: SO₂ vmoea-td 50 % willef / Sofort's EngtuPh: SO₂ Essig., 50 % Wastler

14 = water + ruochol, vervolgens te Dln-en / eau + alcool, puis l'OI Boissons / wblef + ilcohol, ten see Beverages sui,s / Wasser + Alkohol, danach sehe / Getrânke

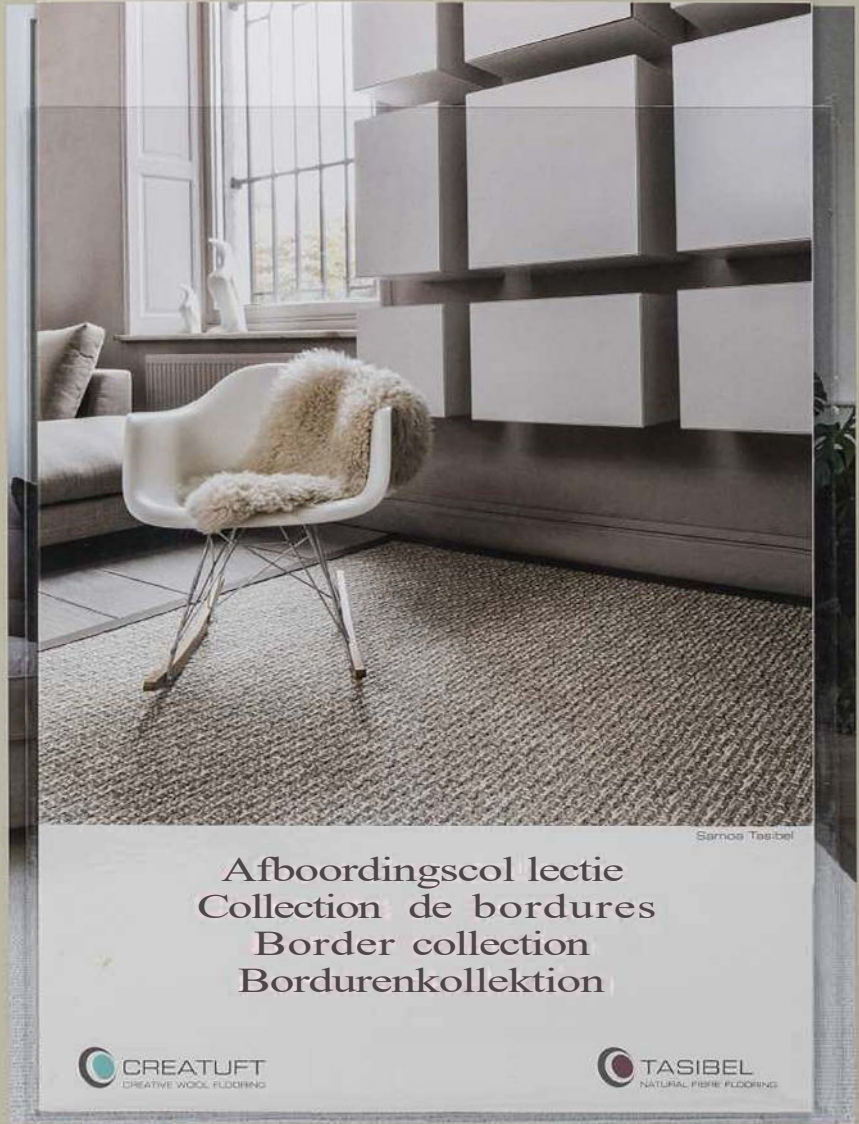
15 = d'ippen met absorbend papier, vervolgens pure alcohol / tamponner l'avec du papier absorbant, puis de l'alcool pur / evaporer / Dab with an absorbng paper, ne't pour pure alcohol and let it evaporate / Tupfen mit absorbierendem papier, dazCh puter Alkohol überdeBet!

Getetailleerde informatie i.v.m. de leg- & onderhoudsvoorschriften: www.creatuft.be

Information plus détaillée concernant la pose & l'entretien : www.creatuft.be

More detailed instructions regarding laying & cleaning: www.creatuft.be

Mehr detaillierte Informationen in Bezug auf Verlegung und Pflege: www.creatuft.be



Sermos Tasibel

Afboordingscol lectie
Collection de bordures
Border collection
Bordurenkollektion

 **CREATUFT**
CREATIVE WOOL FLOORING

 **TASIBEL**
NATURAL FIBRE FLOORING



 **CREATUFT**
CREATIVE WOOL FLOORING

www.creatuft.be