



Goodrich Global
SINCE 1983

LA SCALA MILANO

ITALIAN DESIGN AND WALLCOVERING

HAND MADE ITALY

COMMERCIAL | HOSPITALITY | RESIDENTIAL |
CRUISE & YACHT INTERIOR



OPERA I

Handcrafted wallcovering

PHYSICAL PROPERTIES

Roll Size:

Bolt supplied in linear meters up to a maximum of 3 linear meters (custom size upon request).

Minimum order 1 linear meter for the bath color homogeneity.

Backing:

Non-woven or thermo-acoustic insulation.

FIRE SAFETY

- Class "A" fire rated - tested in accordance with USA ASTM E-84/Europe BS1 D0-M1.

- Class "A" fire rated - tested in accordance with IMO cruise & yacht interior.

CLEANING/MAINTENANCE

Gently washed. We recommend only the use of a mild soap solution for cleaning these products. If stronger cleaning is required, first evaluate the cleaner in an inconspicuous location.

ECOFRIENDLY/PVC free

The paper types used for all collections are 100% "non-woven fabrics" with special cellulose and fiber compound textiles, which are entirely PVC-free and contain no solvents or vinyl adhesives. The designs printed on the paper meet green standards too because they are produced using natural rubber inks that are absolutely non-toxic and environmentally friendly as they are water-based.

COLOR CONFORMITY/TOLERANCE

La Scala Milano Wallcovering works to produce a unique handcrafted wallcovering made in our atelier based on customer's request, therefore any differences in color or proportions express the specific nature of the processing and fall within the normal tolerance of the product category. The coloring and rendering of the images resulting from La Scala Milano Wallcovering promotional channels are indicative, as they cannot reproduce the final surface, environment, and brightness conditions of the product when used by the customer.

ORIGIN

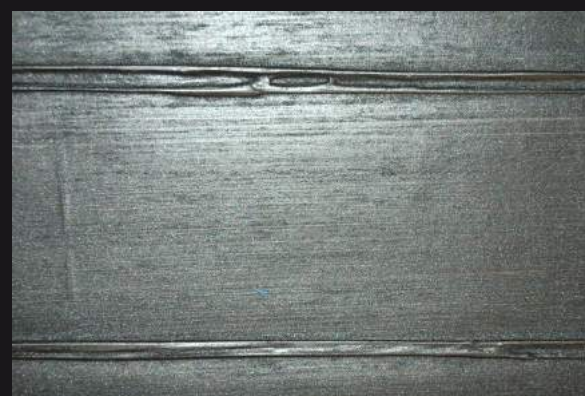
Italy.



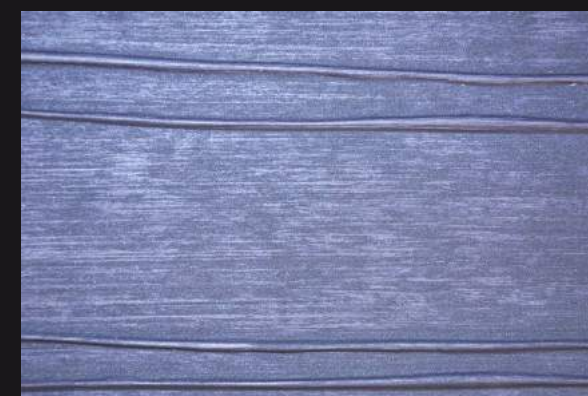
COMPOSIZIONE (240-246)



COM 240



COM 241



COM 242



COM 243



COM 244

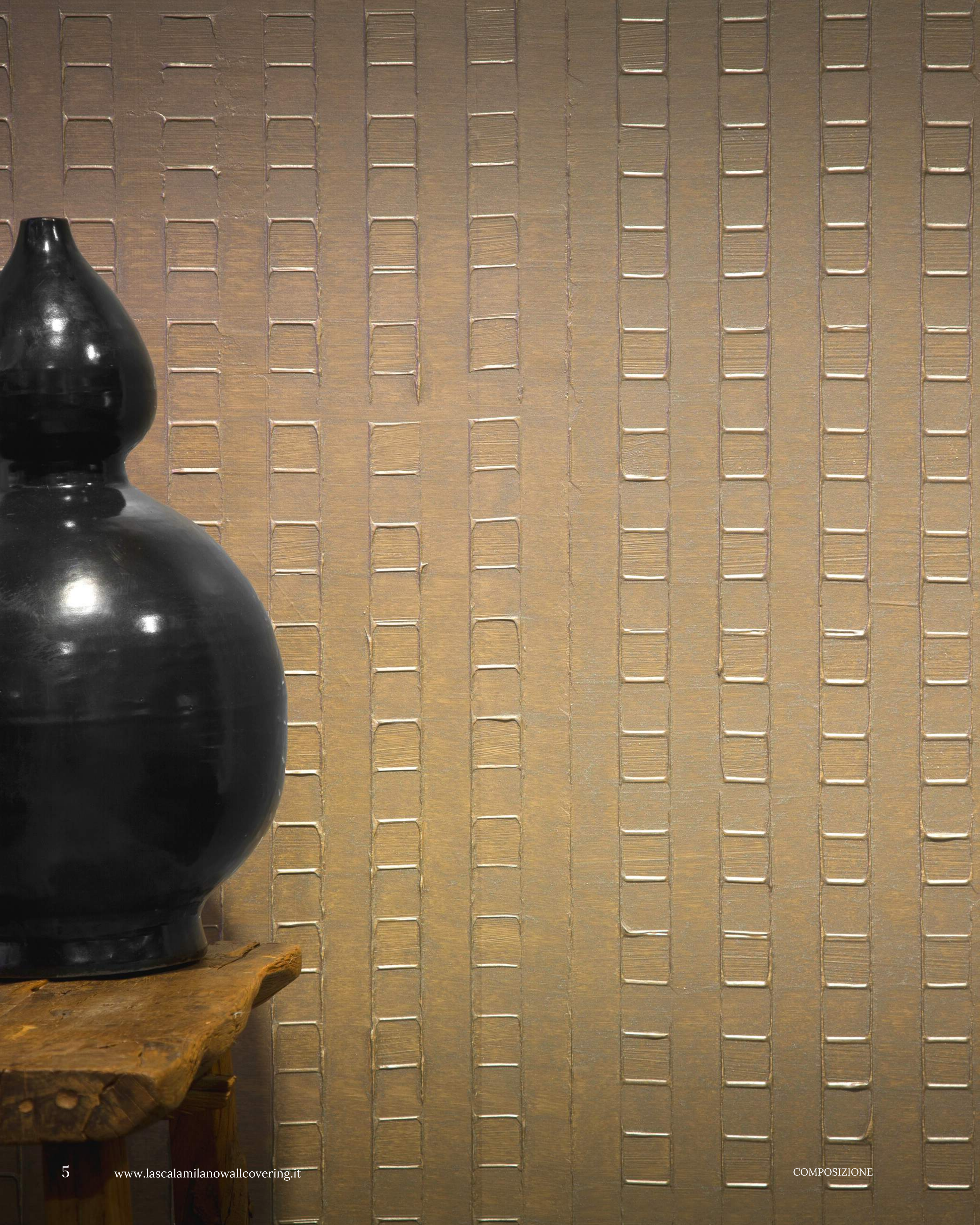


COM 245



COM 246

Each collection can be ordered in several colors and finishes variations.
Colors: RAL, PANTONE, NCS.
Effects: SATIN, MATT, METAL, LAQUE or mixed combinations.



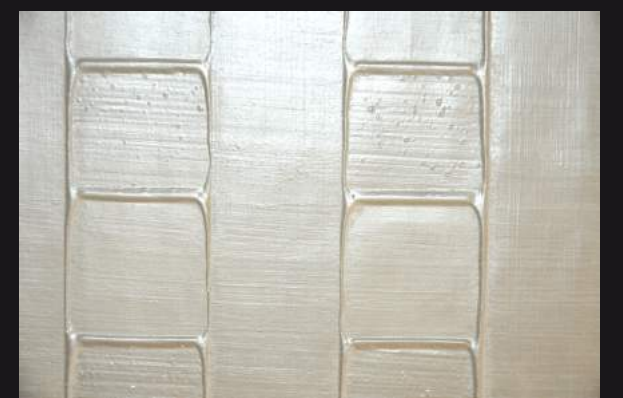
COMPOSIZIONE (560-566)



COM 560



COM 561



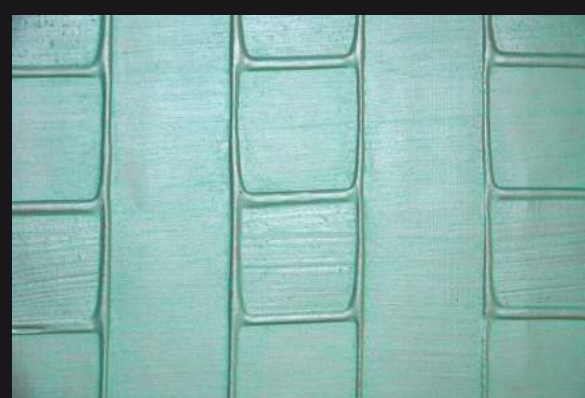
COM 562



COM 563



COM 564



COM 565



COM 566

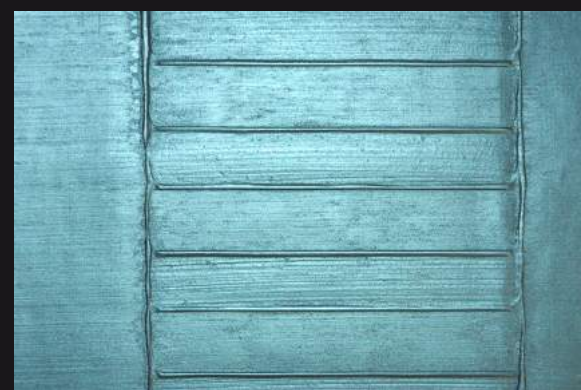
Each collection can be ordered in several colors and finishes variations.
Colors: RAL, PANTONE, NCS.
Effects: SATIN, MATT, METAL, LAQUE or mixed combinations.



COMPOSIZIONE (600-606)



COM 600



COM 601



COM 602



COM 603



COM 604

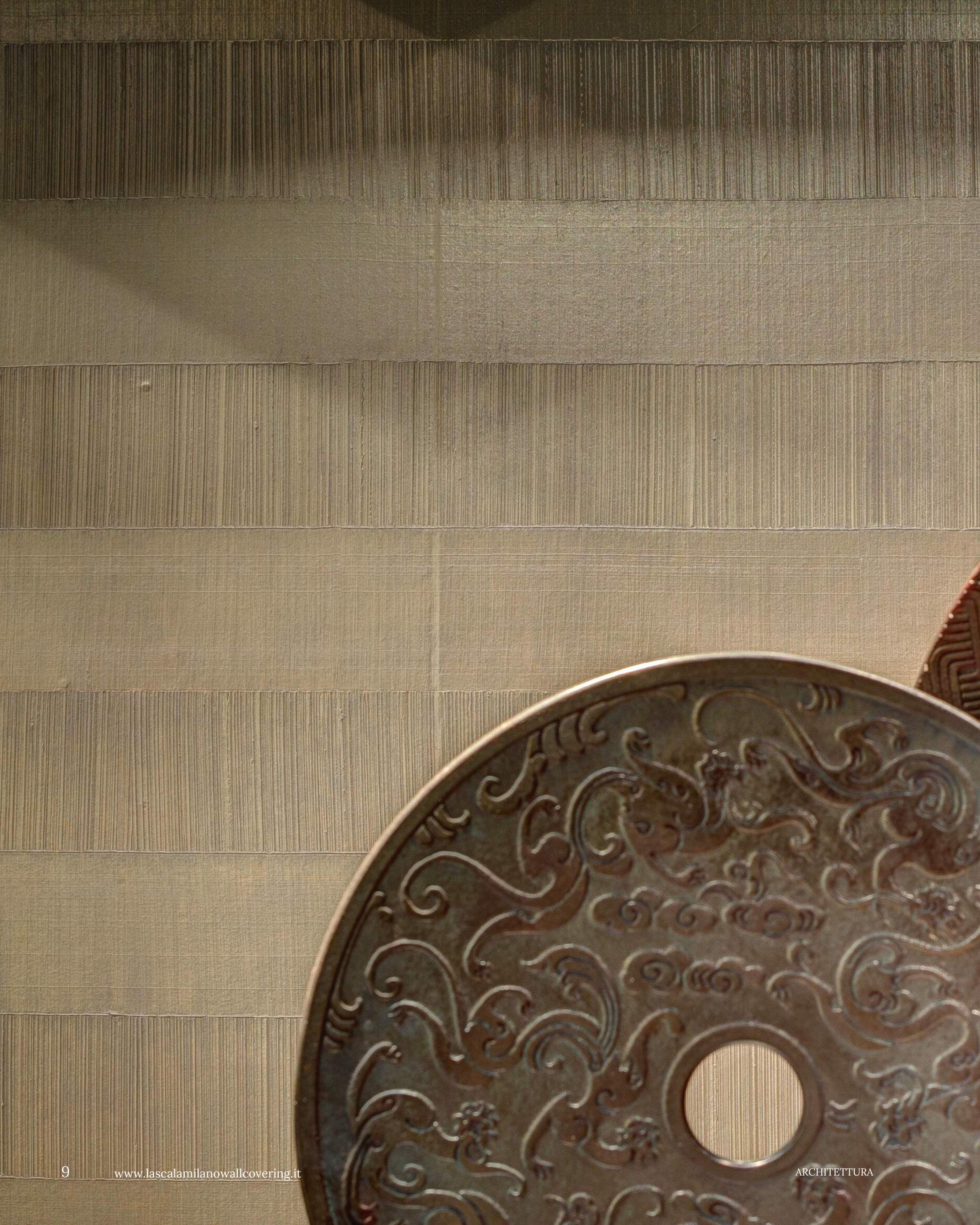


COM 605



COM 606

Each collection can be ordered in several colors and finishes variations.
Colors: RAL, PANTONE, NCS.
Effects: SATIN, MATT, METAL, LAQUE or mixed combinations.



ARCHITETTURA (550-556)



ARC 550



ARC 551



ARC 552



ARC 553



ARC 554



ARC 555



ARC 556

Each collection can be ordered in several colors and finishes variations.
Colors: RAL, PANTONE, NCS.
Effects: SATIN, MATT, METAL, LAQUE or mixed combinations.



MATERIA (260-266)



MAT 260



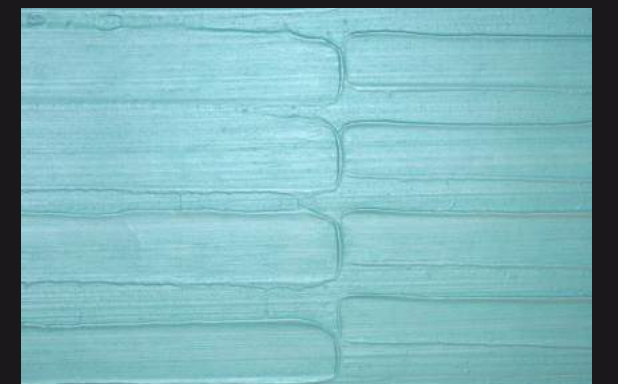
MAT 261



MAT 262



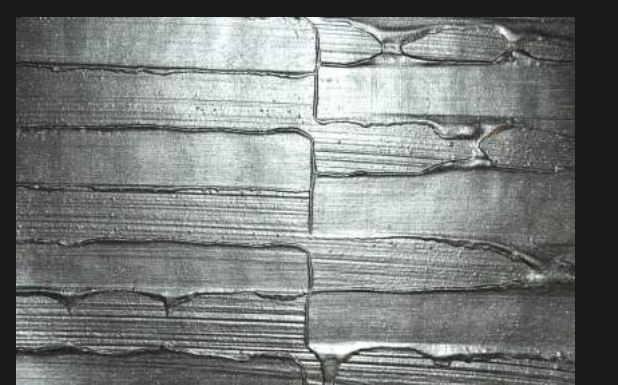
MAT 263



MAT 264



MAT 265



MAT 266

Each collection can be ordered in several colors and finishes variations.
Colors: RAL, PANTONE, NCS.
Effects: SATIN, MATT, METAL, LAQUE or mixed combinations.



MATERIA (340-346)



MAT 340



MAT 341



MAT 342



MAT 343



MAT 344



MAT 345



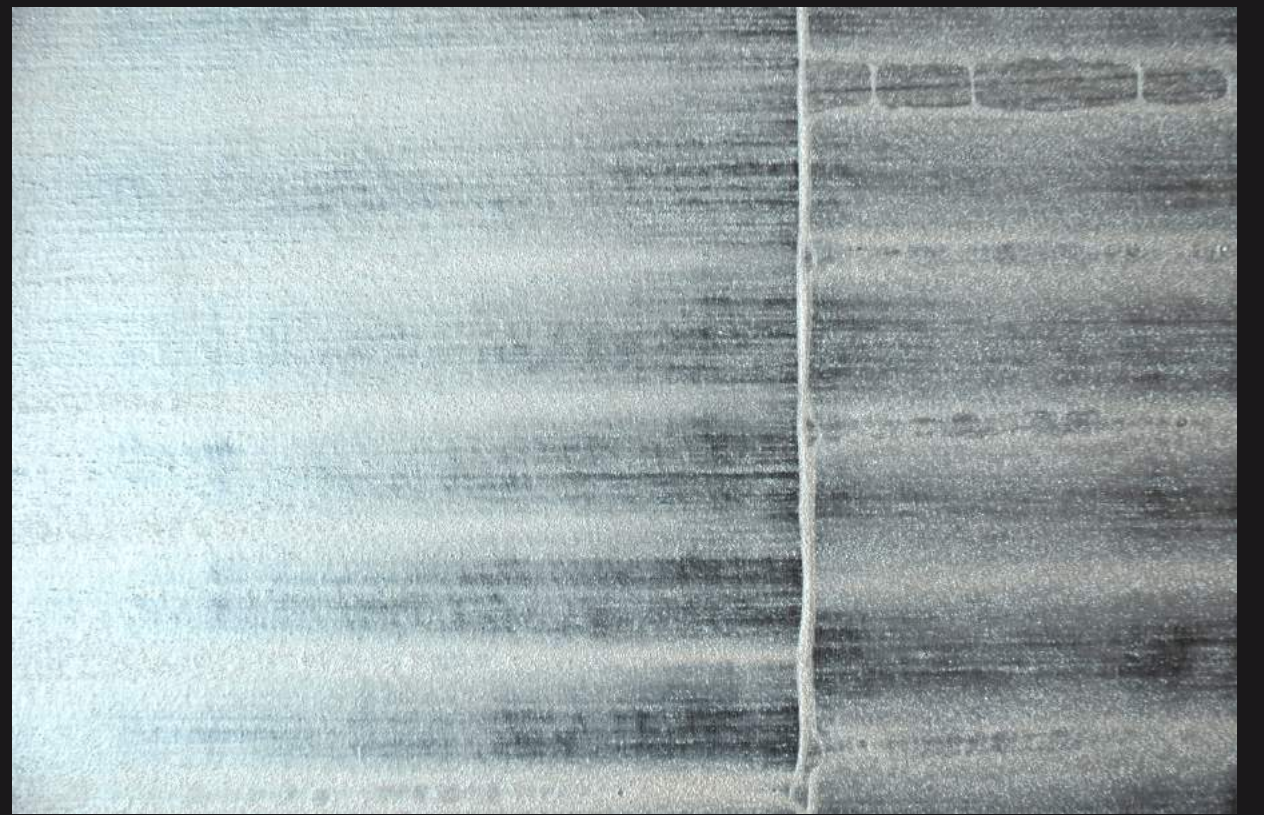
MAT 346

Each collection can be ordered in several colors and finishes variations.
Colors: RAL, PANTONE, NCS.
Effects: SATIN, MATT, METAL, LAQUE or mixed combinations.





ORIGAMI (440-446)



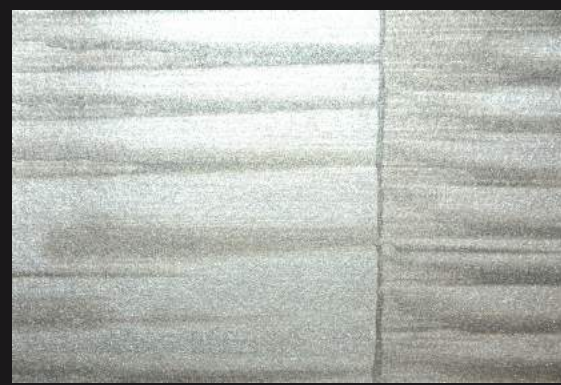
ORI 440



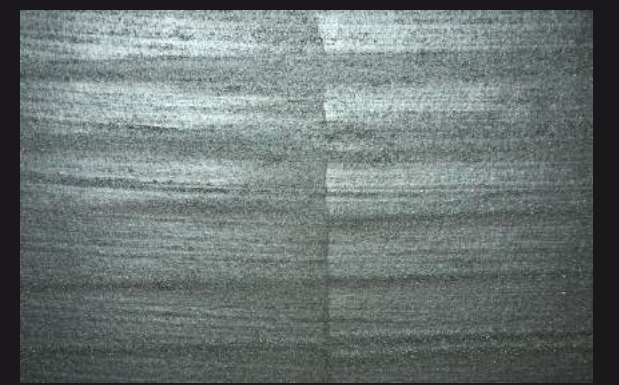
ORI 441



ORI 442



ORI 443



ORI 444



ORI 445



ORI 446

Each collection can be ordered in several colors and finishes variations.
Colors: RAL, PANTONE, NCS.
Effects: SATIN, MATT, METAL, LAQUE or mixed combinations.



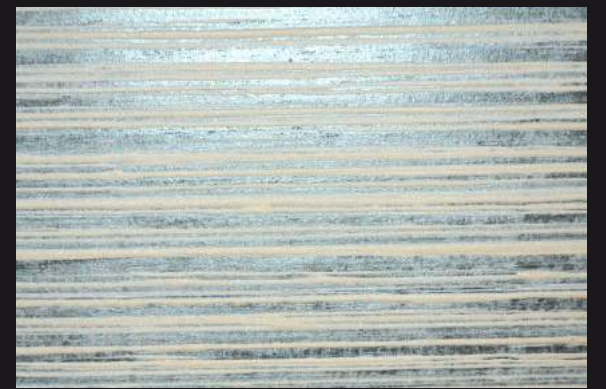
ORIGAMI (450-456)



ORI 450



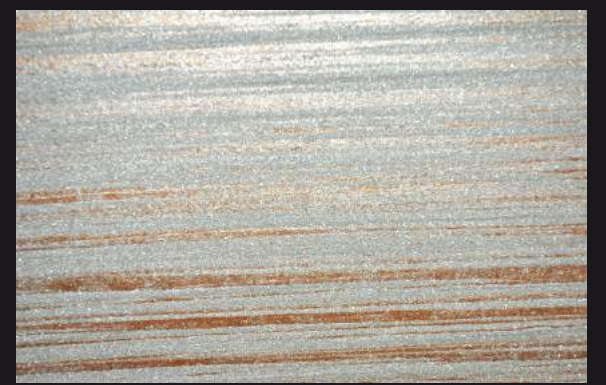
ORI 451



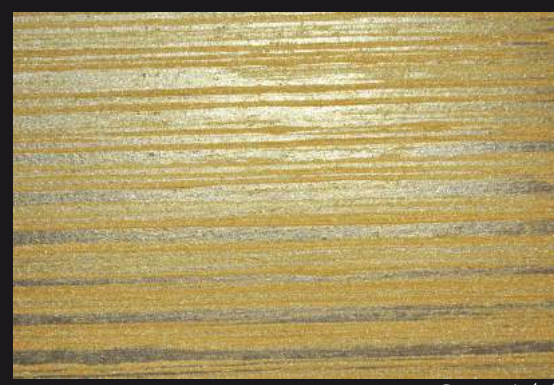
ORI 452



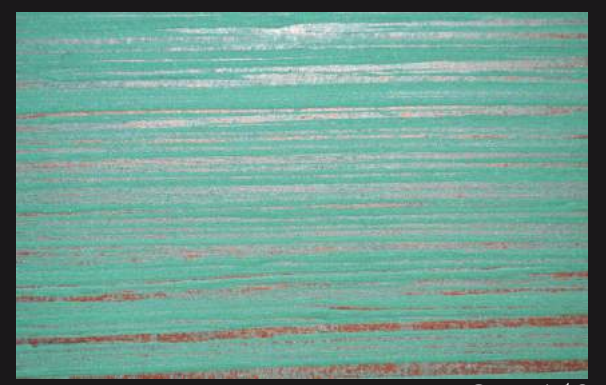
ORI 453



ORI 454



ORI 455



ORI 456

Each collection can be ordered in several colors and finishes variations.
Colors: RAL, PANTONE, NCS.
Effects: SATIN, MATT, METAL, LAQUE or mixed combinations.

L.S.M. Wallcovering S.r.l.s.
Via Tazio Nuvolari 5
10026, Santena (TO), Italy
+39 0119456027
info@lascalamilanowallcovering.it
www.lascalamilanowallcovering.it