

GOODRICH SOLUTIONS
WALLCOVERING
402 | EMERALD



Goodrich Global
Since 1983

NON-WOVEN TEXTILE WALLCOVERINGS



ECOWALL

ECOWALL
2019 - 2023.12

COMMERCIAL | HOSPITALITY | RESIDENTIAL

ECO10212





ECO10207

ECOWALL EMERALD NON-WOVEN WALLCOVERINGS



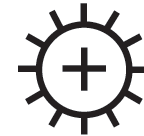
PHYSICAL PROPERTIES

WEIGHT 146 - 196 g/m²
 ROLL WIDTH 100 cm
 COMPOSITION Non-woven (Mixture of cellulose and polyester)

GENERAL SPECIFICATIONS



Washable
after installation



Good light
resistance



Easy
installation



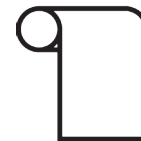
Breathable



Fire
resistant



0493/19
Marine
certified



Sold by
the metre



Ecological,
PVC free



Manufactured
with recycled
fibres



Printed with
solar energy



SINGAPORE
GREEN
BUILDING
COUNCIL



The mark of
responsible forestry

BATCHING

Since slight variations in shading may occur from time to time, it is important that the roll carrying the same batch number be used in any one area.

METALLIC WAVE

Sold by the metre

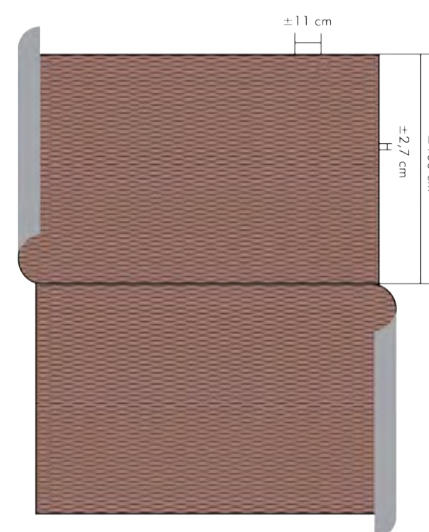


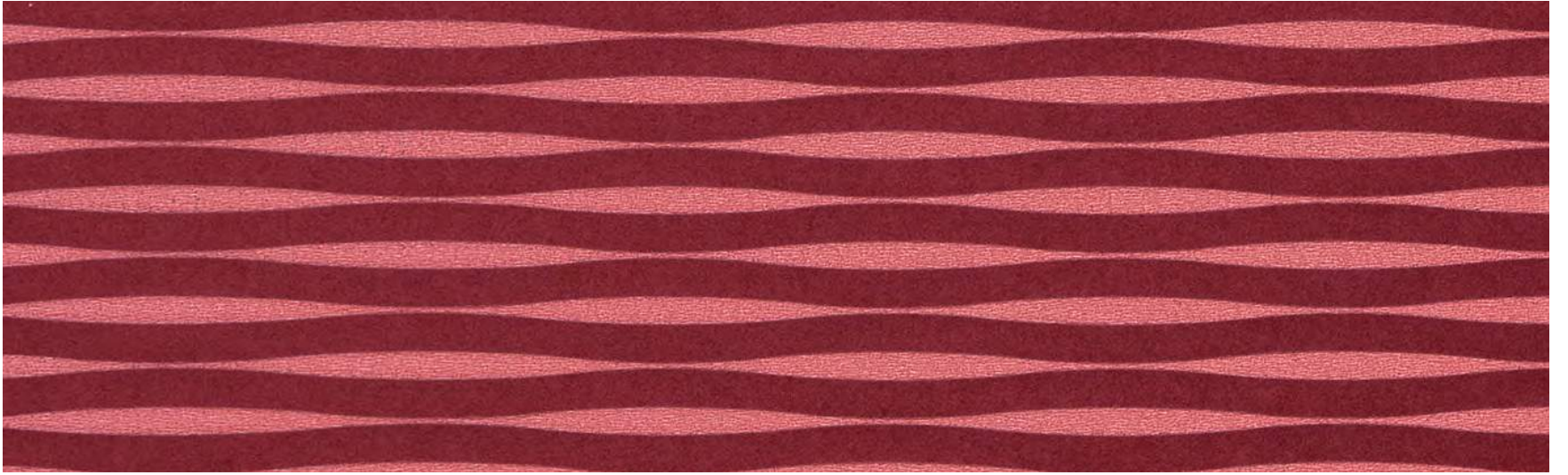
WEIGHT
ROLL WIDTH
COMPOSITION

± 184 g/m²
± 100 cm
Non-woven (Mixture of
cellulose and polyester)
Reverse Match
Horizontal: ± 2,7 cm
Vertical: ± 11 cm

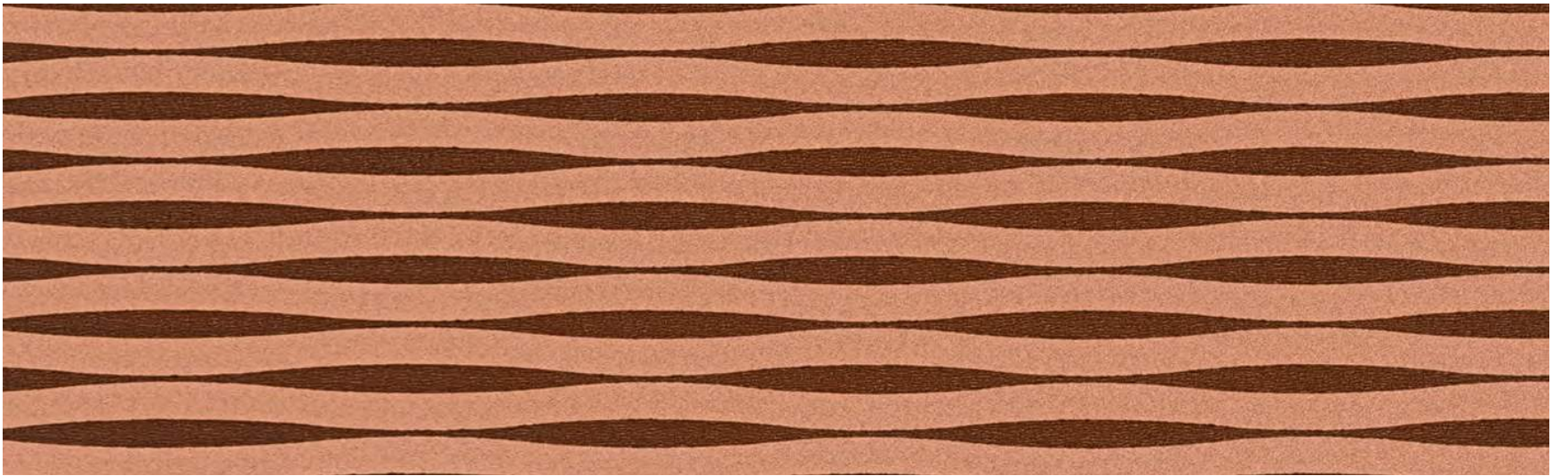
MATCH:
REPEAT:

- Washable after installation
- Good light resistance: Xeno test 6-7
- Easy installation
- Breathable
- Fire resistant (EU: B, s1-d0 / US: Class A)
- Marine certified
- Ecological, PVC Free
- Manufactured with recycled fibres
- Printed with solar energy
- Singapore Green Label Certified Product
- FSC® certified





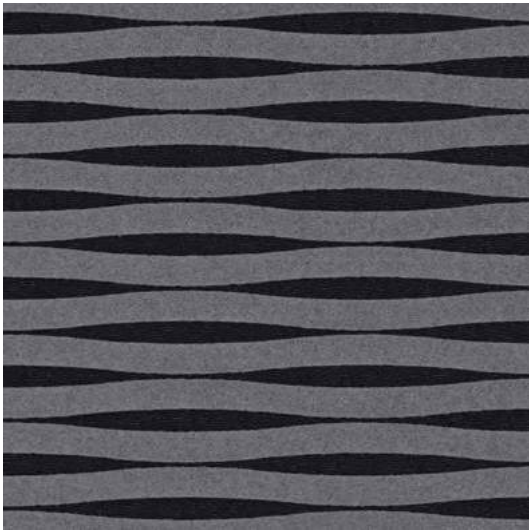
ECO10100



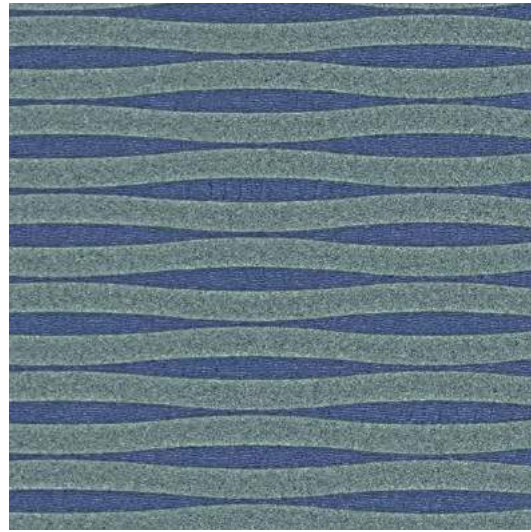
ECO10101



ECO10102



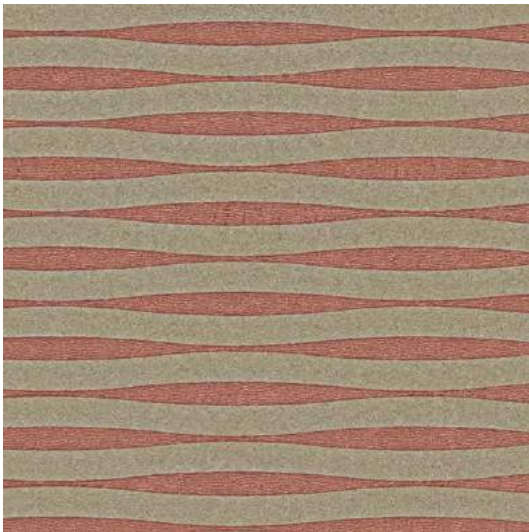
ECO10103



ECO10104



ECO10105



ECO10106



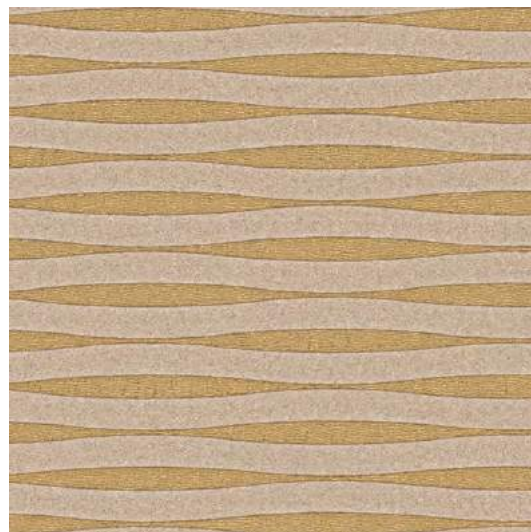
ECO10107



ECO10108



ECO10109



ECO10110



ECO10111



ECO10112



ECO10113



ECO10114



ECO10115



ECO10116



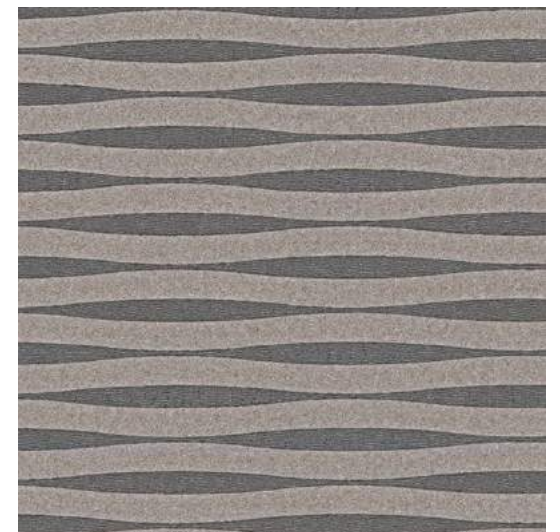
ECO10117



ECO10131



ECO10135



ECO10136

METALLIC STRIPE

Sold by the metre

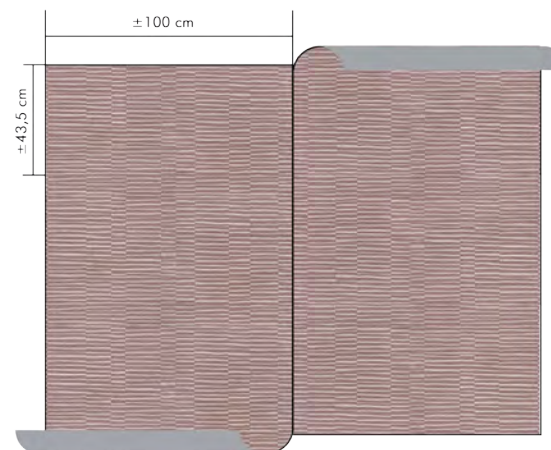


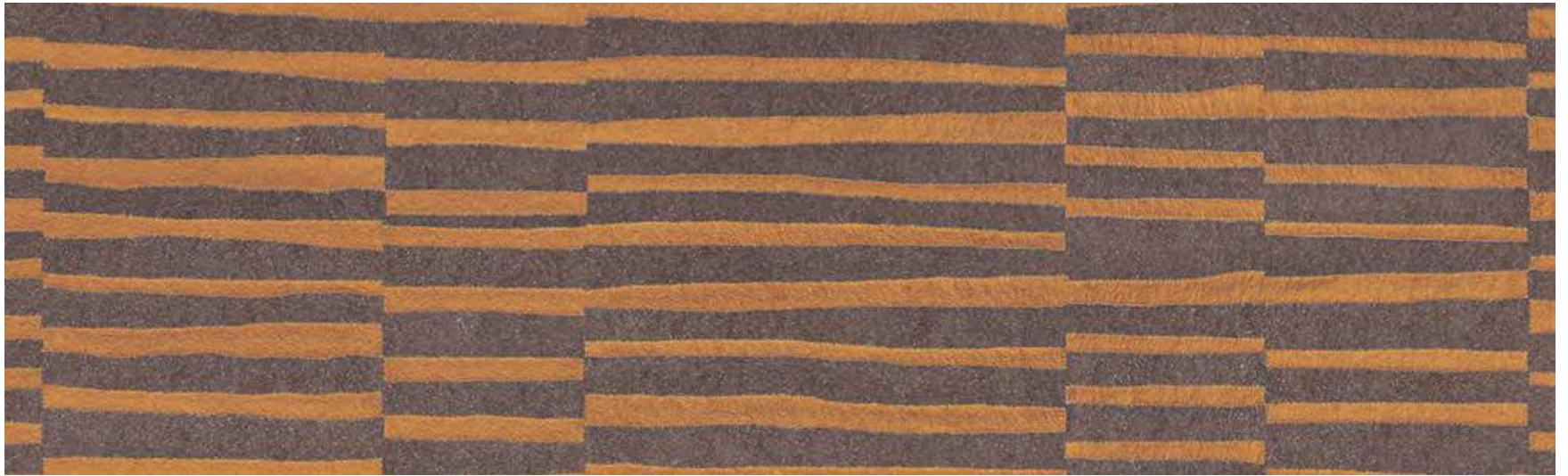
WEIGHT
ROLL WIDTH
COMPOSITION

± 188 g/m²
± 100 cm
Non-woven (Mixture of
cellulose and polyester)
Reverse Random
Horizontal: ± 100 cm
Vertical: ± 43,5 cm

MATCH:
REPEAT:

- Washable after installation
- Good light resistance: Xeno test 6-7
- Easy installation
- Breathable
- Fire resistant (EU: B, s1-d0 / US: Class A)
- Marine certified
- Ecological, PVC Free
- Manufactured with recycled fibres
- Printed with solar energy
- Singapore Green Label Certified Product
- FSC® certified

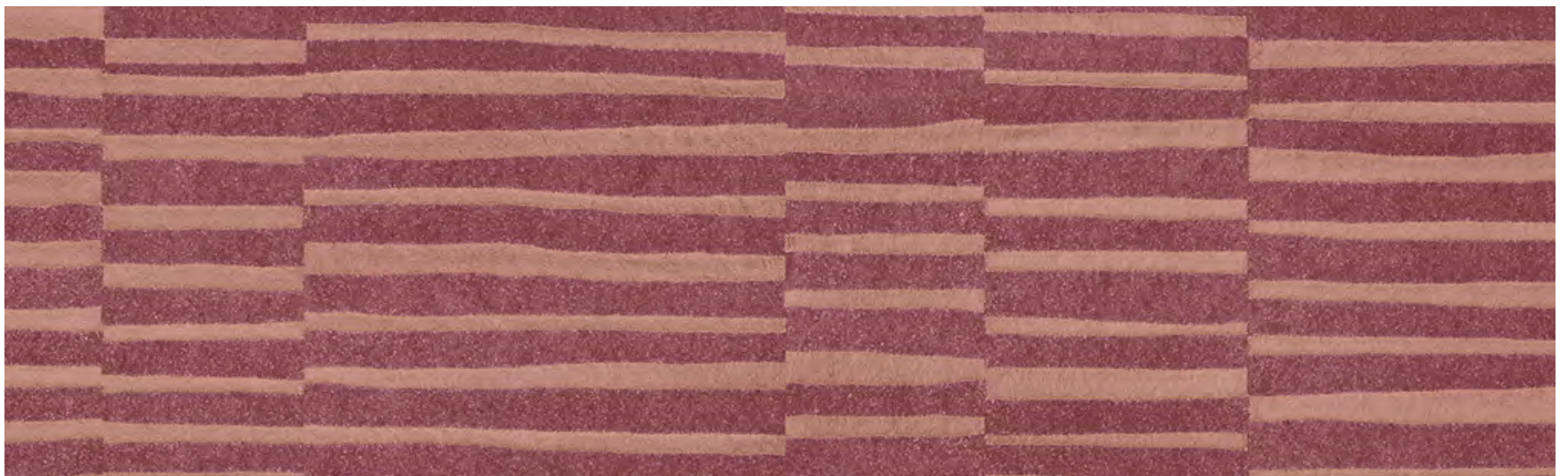




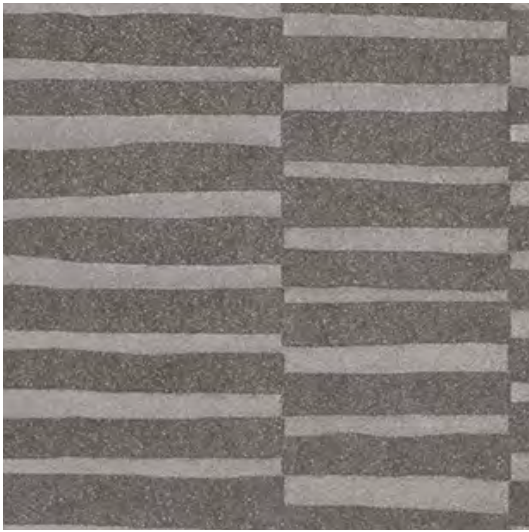
ECO10200



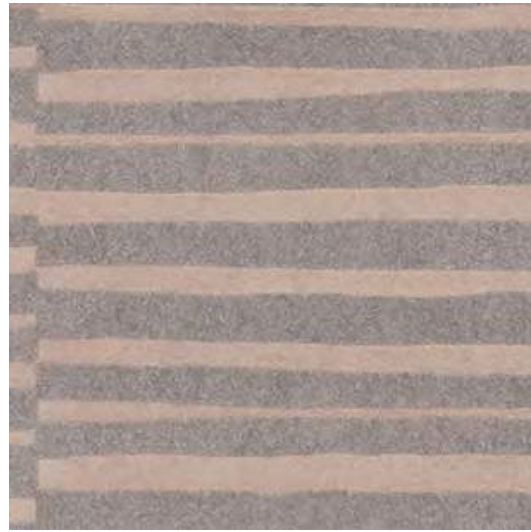
ECO10201



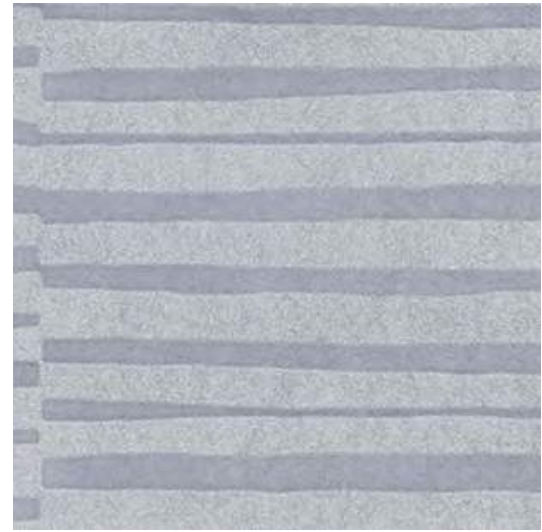
ECO10202



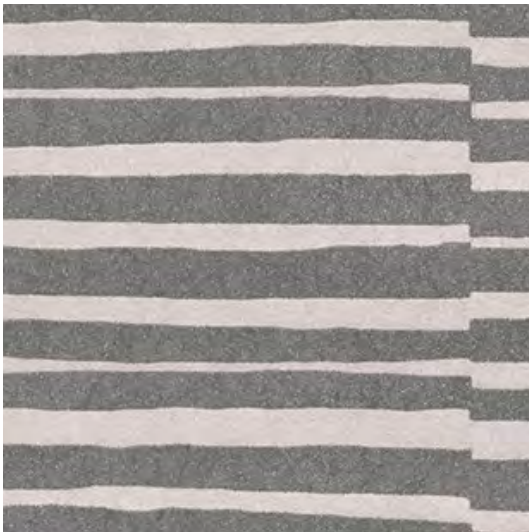
ECO10203



ECO10204



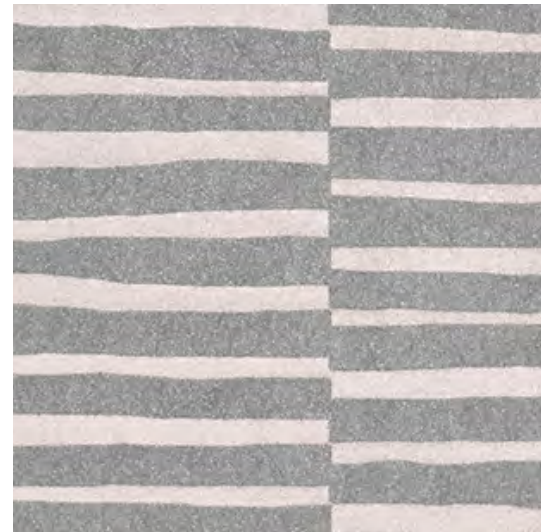
ECO10205



ECO10206



ECO10207



ECO10208



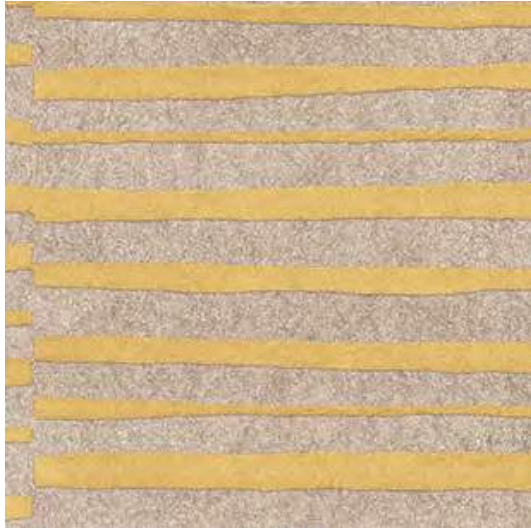
ECO10209



ECO10210



ECO10211



ECO10212



ECO10213



ECO10214



ECO10216



ECO10215

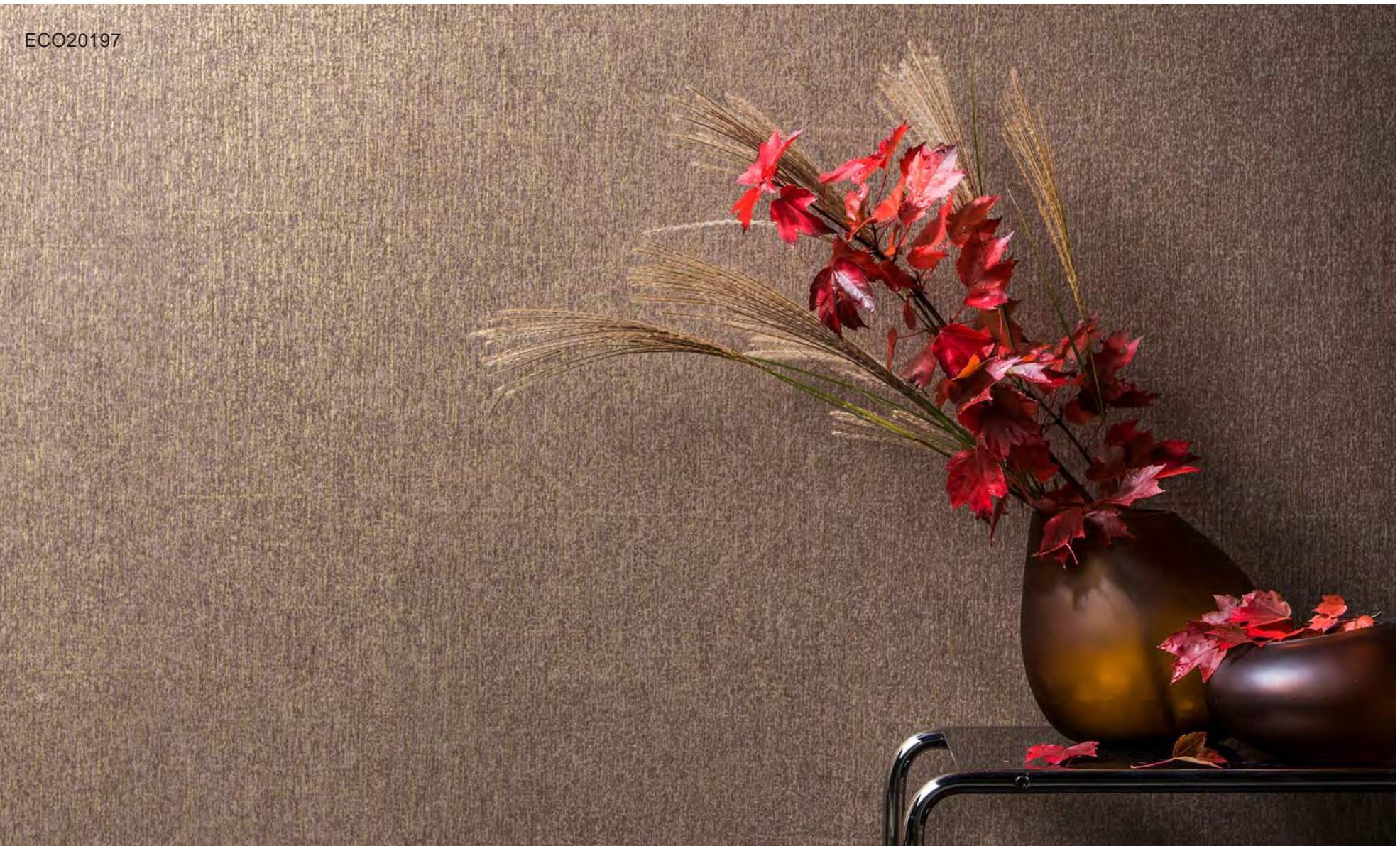


ECO10216

SHINY PLAIN

Sold by the metre

ECO20197

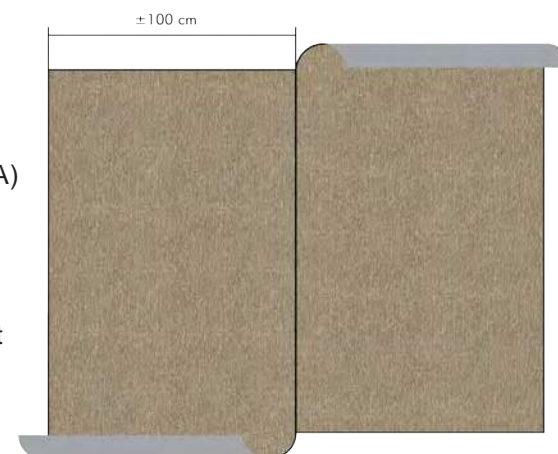


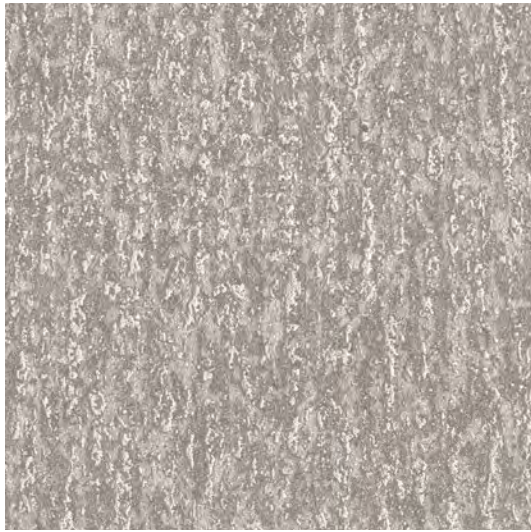
WEIGHT
ROLL WIDTH
COMPOSITION

± 196 g/m²
± 100 cm
Non-woven (Mixture of
cellulose and polyester)
Reverse Random
Horizontal: 0 cm
Vertical: 0 cm

MATCH:
REPEAT:

- Washable after installation
- Good light resistance: Xeno test 6-7
- Easy installation
- Breathable
- Fire resistant (EU: B, s1-d0 / US: Class A)
- Marine certified
- Ecological, PVC Free
- Manufactured with recycled fibres
- Printed with solar energy
- Singapore Green Label Certified Product
- FSC® certified





ECO20191



ECO20192



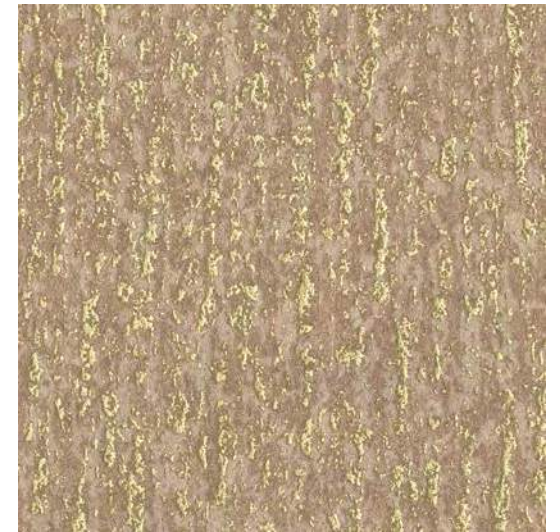
ECO20193



ECO20194



ECO20195



ECO20196



ECO20197



ECO20198



ECO20199

STONE LOOK

Sold by the metre

ECO20295

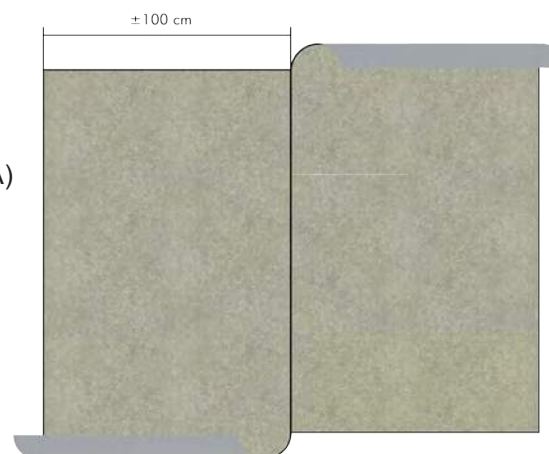


WEIGHT
ROLL WIDTH
COMPOSITION

± 196 g/m²
± 100 cm
Non-woven (Mixture of
cellulose and polyester)
Reverse Random
Horizontal: 0 cm
Vertical: 0 cm

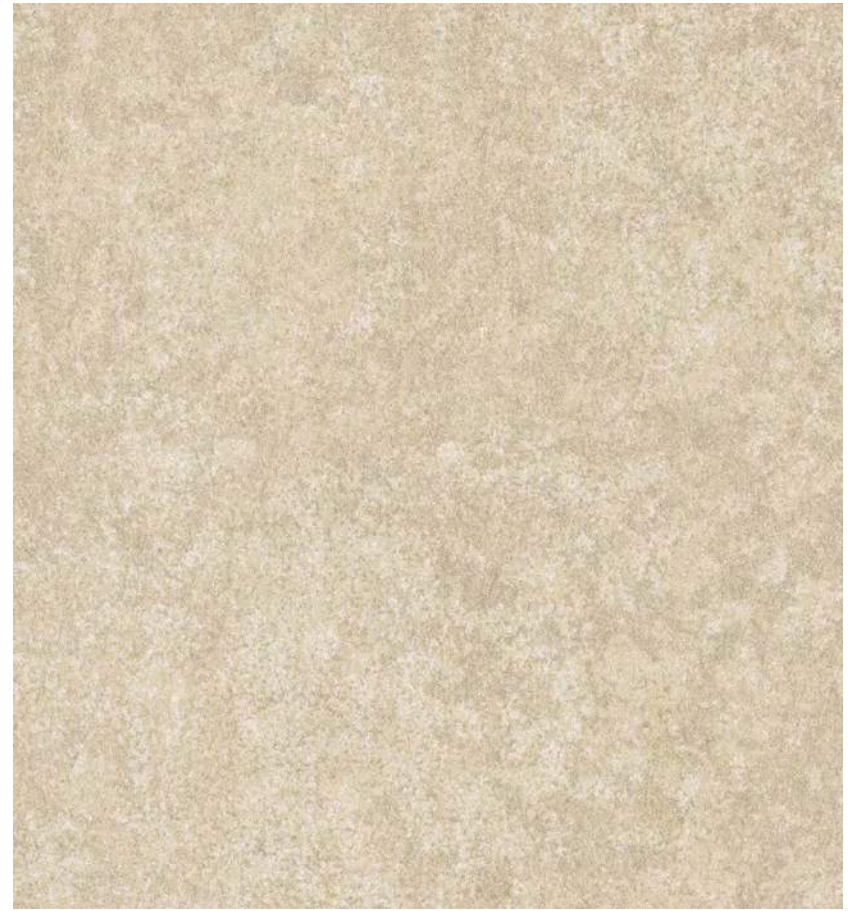
MATCH:
REPEAT:

- Washable after installation
- Good light resistance: Xeno test 6-7
- Easy installation
- Breathable
- Fire resistant (EU: B, s1-d0 / US: Class A)
- Marine certified
- Ecological, PVC Free
- Manufactured with recycled fibres
- Printed with solar energy
- Singapore Green Label Certified Product
- FSC® certified





ECO20291



ECO20292



ECO20293



ECO20294



ECO20295



ECO20296

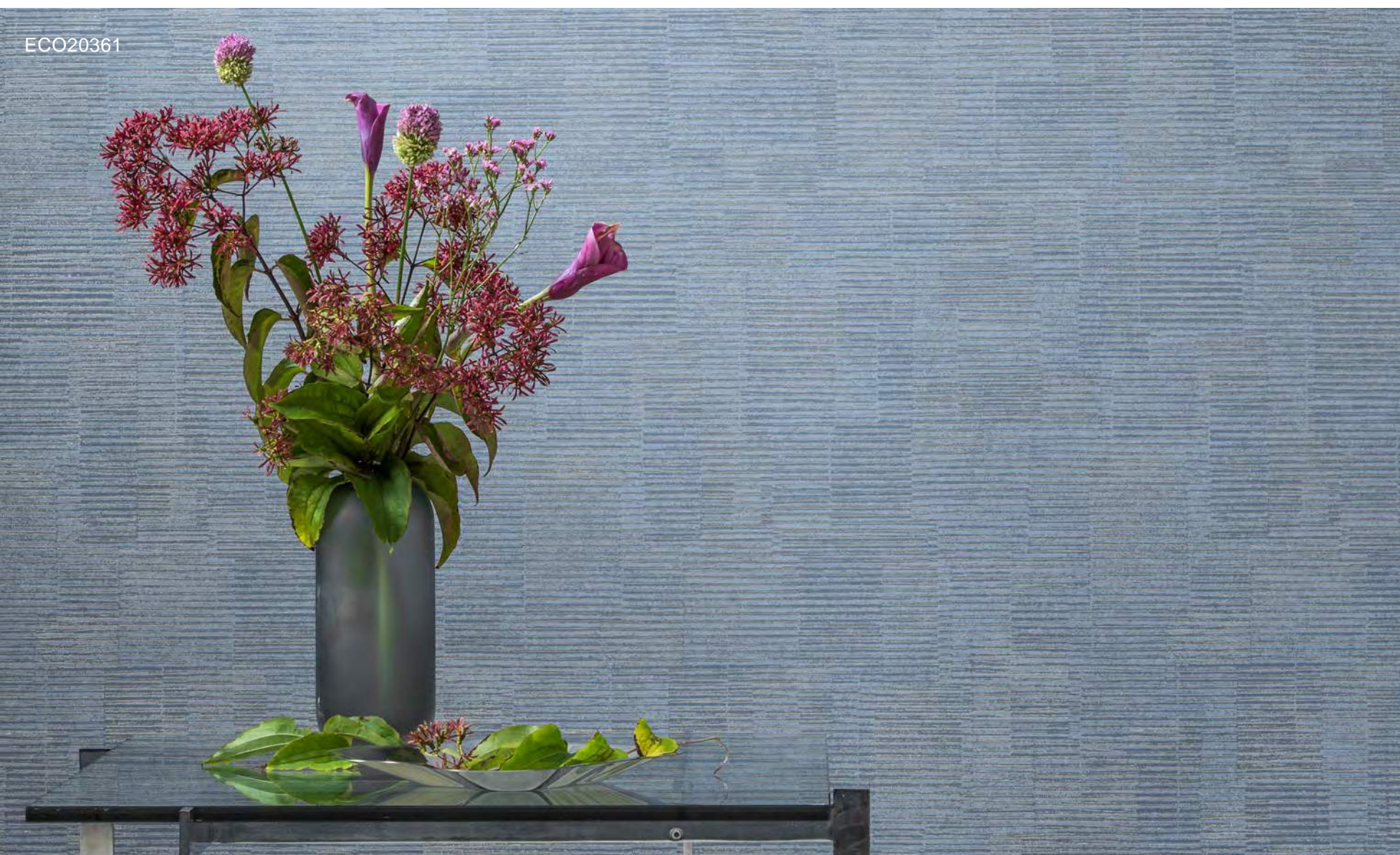


ECO20297

IRIDESCENT STRIPE

Sold by the metre

ECO20361

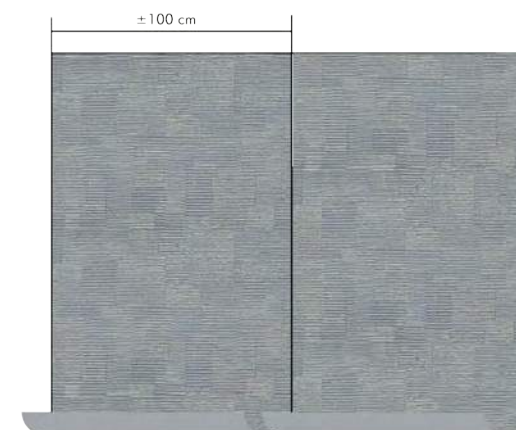


WEIGHT
ROLL WIDTH
COMPOSITION

± 188 g/m²
± 100 cm
Non-woven (Mixture of
cellulose and polyester)
Straight Random
Horizontal: 0 cm
Vertical: 0 cm

MATCH:
REPEAT:

- Washable after installation
- Good light resistance: Xeno test 6-7
- Easy installation
- Breathable
- Fire resistant (EU: B, s1-d0 / US: Class A)
- Marine certified
- Ecological, PVC Free
- Manufactured with recycled fibres
- Printed with solar energy
- Singapore Green Label Certified Product
- FSC® certified





ECO20361



ECO20362



ECO20363



ECO20364

HERB DESIGN

Sold by the metre

ECO20481



WEIGHT
ROLL WIDTH
COMPOSITION

± 146 g/m²
± 100 cm
Non-woven (Mixture of
cellulose and polyester)
Straight Match
Horizontal: ± 100 cm
Vertical: ± 64 cm

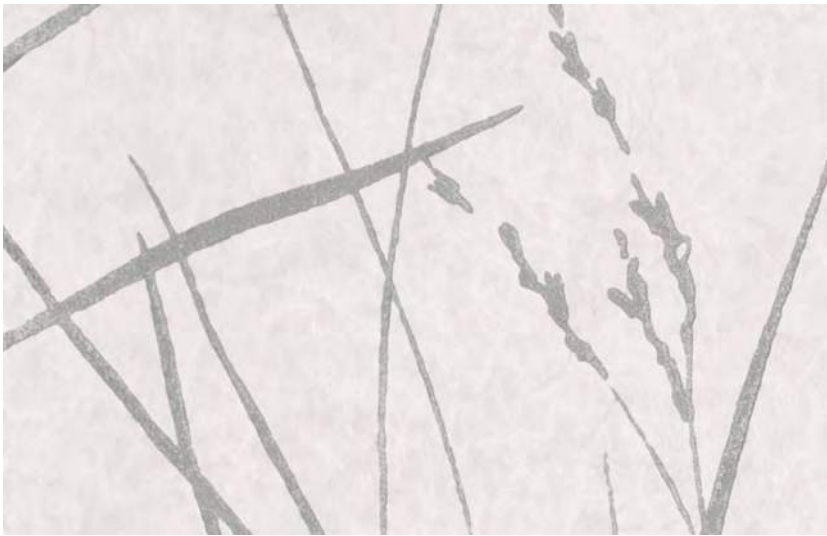
MATCH:
REPEAT:

- Washable after installation
- Good light resistance: Xeno test 6-7
- Easy installation
- Breathable
- Fire resistant (EU: B, s1-d0 / US: Class A)
- Ecological, PVC Free
- Manufactured with recycled fibres
- Printed with solar energy
- Singapore Green Label Certified Product
- FSC® certified





ECO20481



ECO20482



ECO20483



ECO20484



ECO20485

TEXTURED PLAIN

Sold by the metre

ECO30308

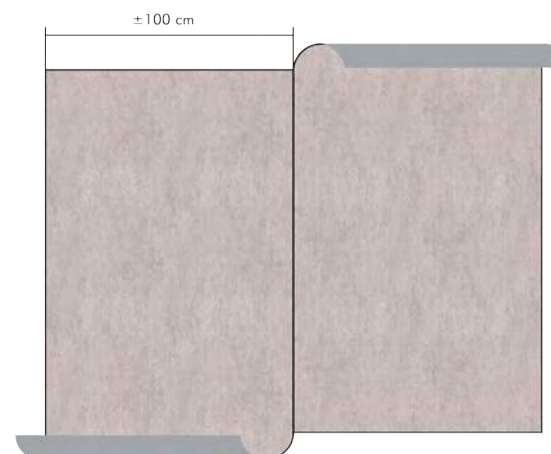


WEIGHT
ROLL WIDTH
COMPOSITION

± 196 g/m²
± 100 cm
Non-woven (Mixture of
cellulose and polyester)
Reverse Random
Horizontal: 0 cm
Vertical: 0 cm

MATCH:
REPEAT:

- Extra washable
- Good light resistance: Xeno test 6-7
- Easy installation
- Breathable
- Fire resistant (EU: B, s1-d0 / US: Class A)
- Marine certified
- Ecological, PVC Free
- Manufactured with recycled fibres
- Printed with solar energy
- Singapore Green Label Certified Product
- FSC® certified





ECO30301



ECO30302



ECO30303



ECO30304



ECO30306



ECO30307



ECO30308



ECO30309

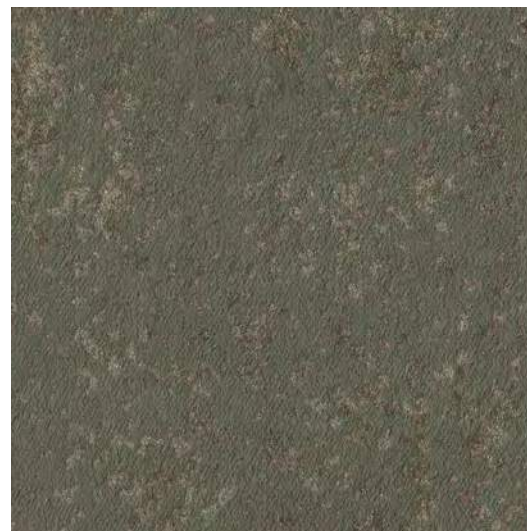


ECO30310

ECO30319



ECO30311



ECO30312



ECO30313



ECO30314



ECO30315



ECO30316

ECO30302



ECO30317



ECO30318



ECO30319

EMBOSSED STRIPE

Sold by the metre

ECO40402



WEIGHT
ROLL WIDTH
COMPOSITION

± 146 g/m²
± 100 cm
Non-woven (Mixture of
cellulose and polyester)
Straight Random
Horizontal: 0 cm
Vertical: 0 cm

MATCH:
REPEAT:

- Washable after installation
- Good light resistance: Xeno test 6-7
- Easy installation
- Breathable
- Fire resistant (EU: B, s1-d0 / US: Class A)
- Ecological, PVC Free
- Manufactured with recycled fibres
- Printed with solar energy
- Singapore Green Label Certified Product
- FSC® certified





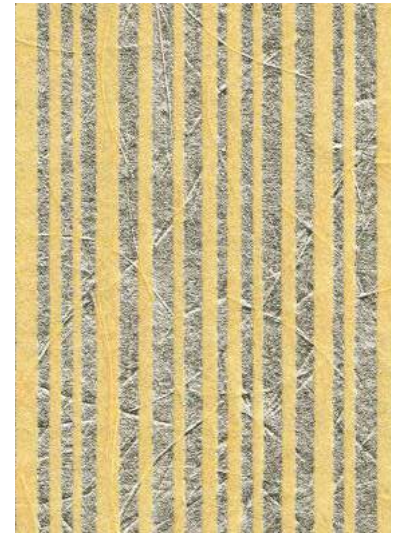
ECO40401



ECO40402



ECO40403



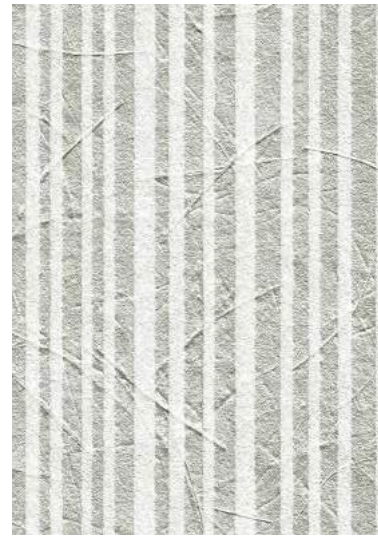
ECO40405



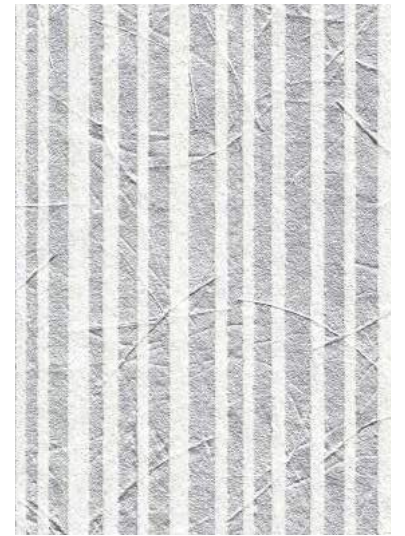
ECO40407



ECO40408



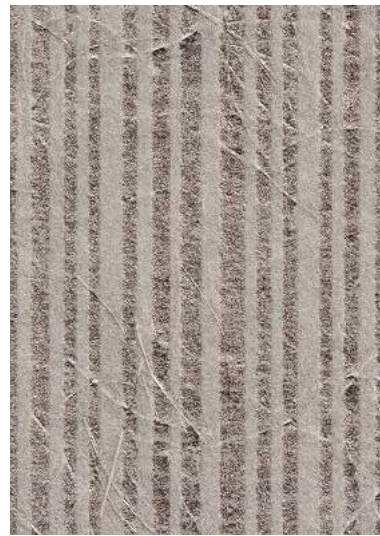
ECO40409



ECO40410



ECO40411



ECO40412



ECO40413



ECO40414

ORGANZA EFFECT

Sold by the metre

ECO41120

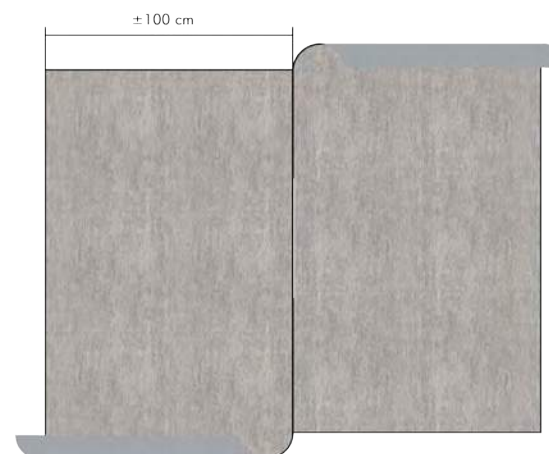


WEIGHT
ROLL WIDTH
COMPOSITION

± 196 g/m²
± 100 cm
Non-woven (Mixture of
cellulose and polyester)
Reverse Random
Horizontal: 0 cm
Vertical: 0 cm

MATCH:
REPEAT:

- Washable after installation
- Good light resistance: Xeno test 6-7
- Easy installation
- Breathable
- Fire resistant (EU: B, s1-d0 / US: Class A)
- Marine certified
- Ecological, PVC Free
- Manufactured with recycled fibres
- Printed with solar energy
- Singapore Green Label Certified Product
- FSC® certified





ECO41101



ECO41102



ECO41103



ECO41104



ECO41105



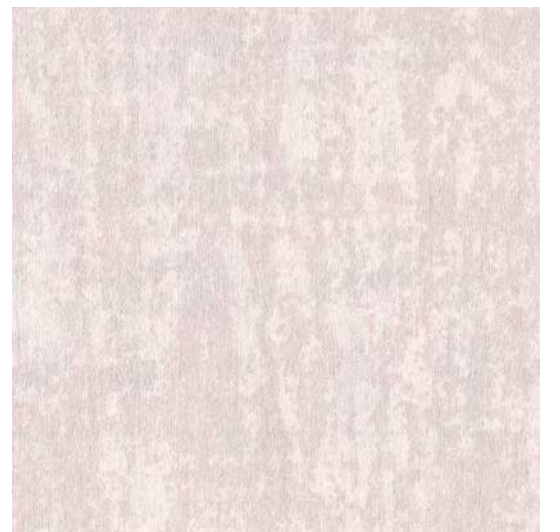
ECO41106



ECO41107



ECO41108



ECO41110

ECO41116

ECO41114



ECO41111



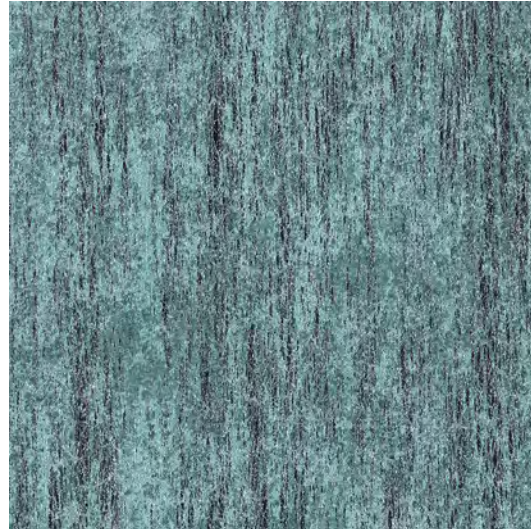
ECO41112



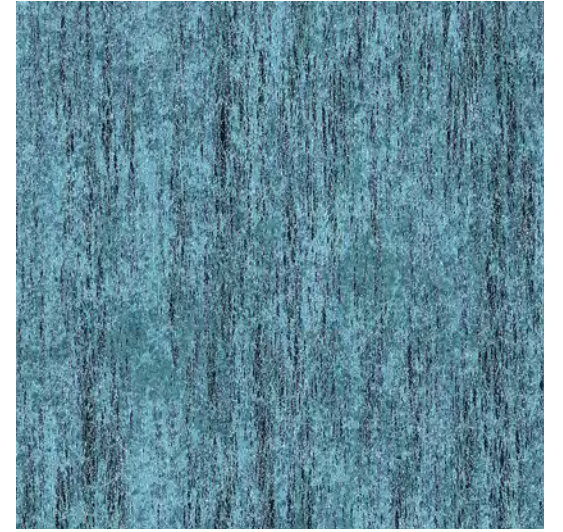
ECO41113



ECO41114



ECO41115



ECO41116



ECO41117



ECO41118



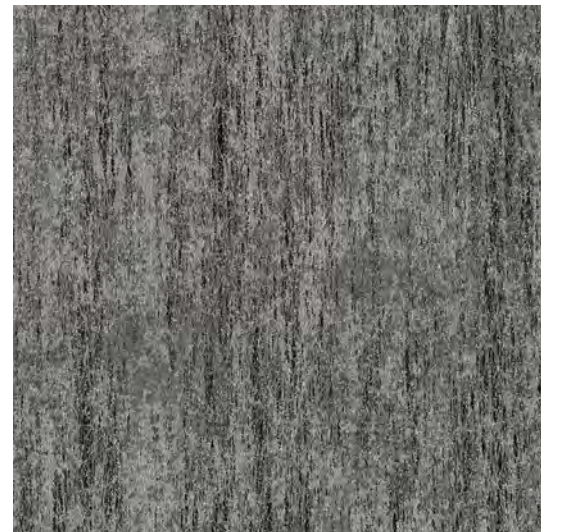
ECO41119



ECO41120



ECO41121



ECO41122

FADED TEXTILE EFFECT

Sold by the metre

ECO42013

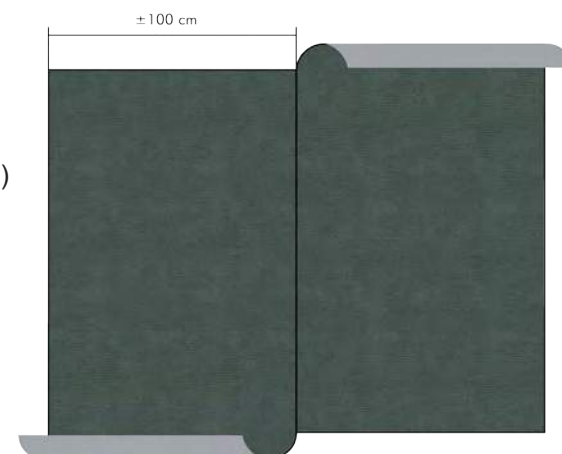


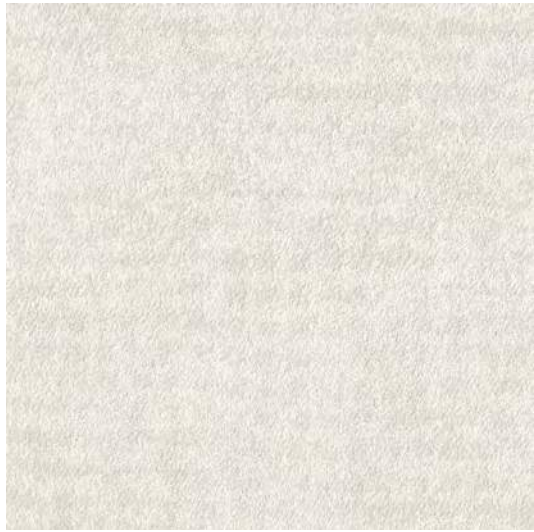
WEIGHT
ROLL WIDTH
COMPOSITION

± 184 g/m²
± 100 cm
Non-woven (Mixture of
cellulose and polyester)
Reverse Random
Horizontal: 0 cm
Vertical: 0 cm

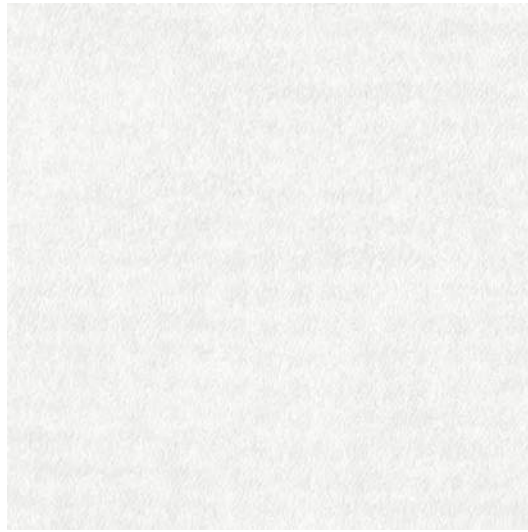
MATCH:
REPEAT:

- Washable after installation
- Good light resistance: Xeno test 6-7
- Easy installation
- Breathable
- Fire resistant (EU: B, s1-d0 / US: Class A)
- Marine certified
- Ecological, PVC Free
- Manufactured with recycled fibres
- Printed with solar energy
- Singapore Green Label Certified Product
- FSC® certified

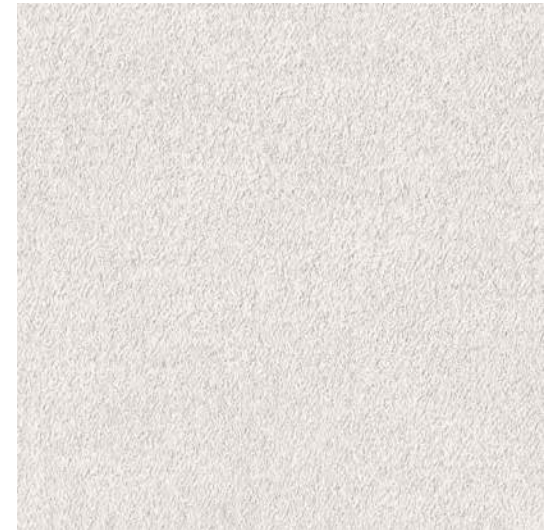




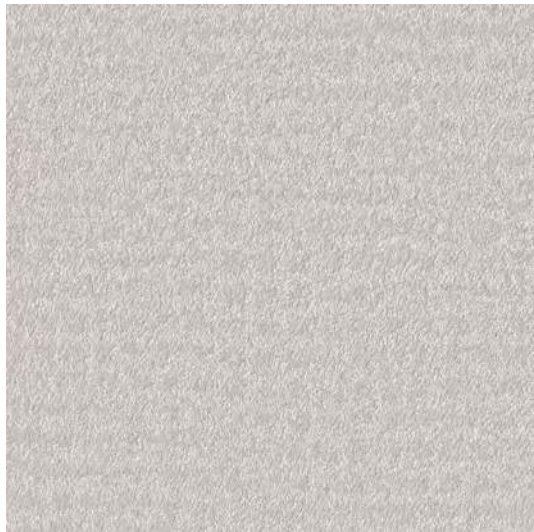
ECO42001



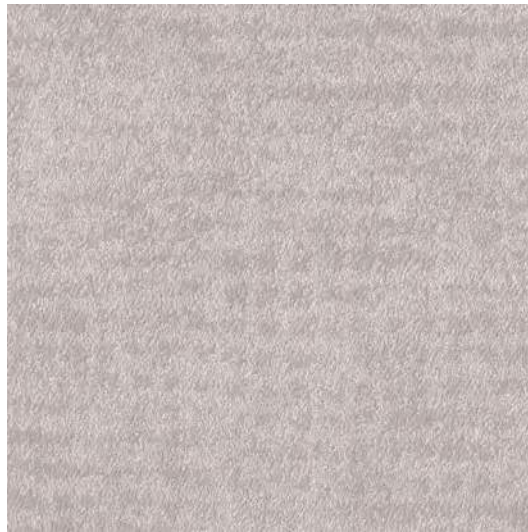
ECO42002



ECO42003



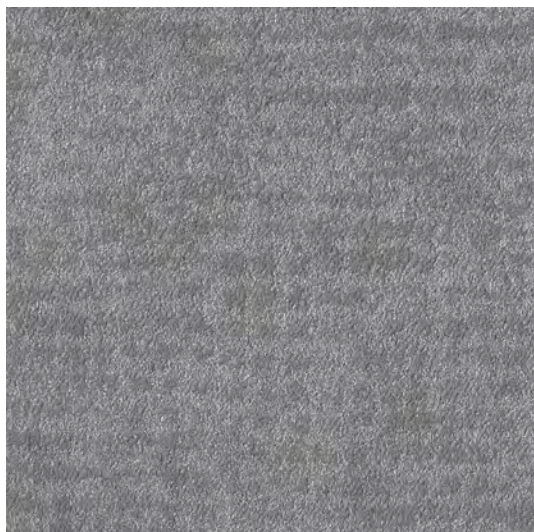
ECO42004



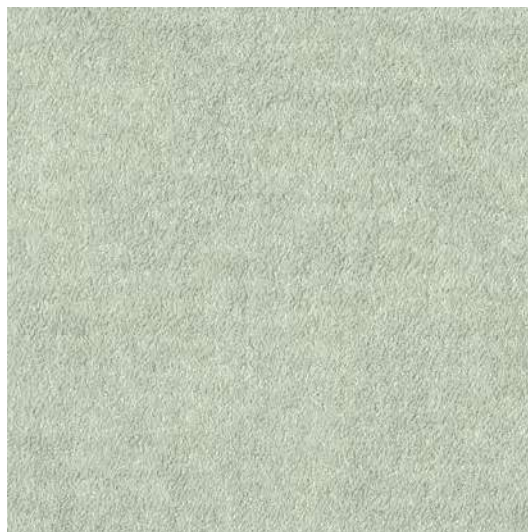
ECO42005



ECO042007



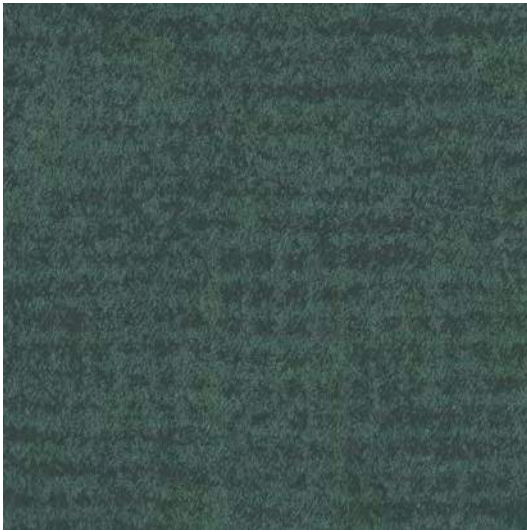
ECO42009



ECO42010



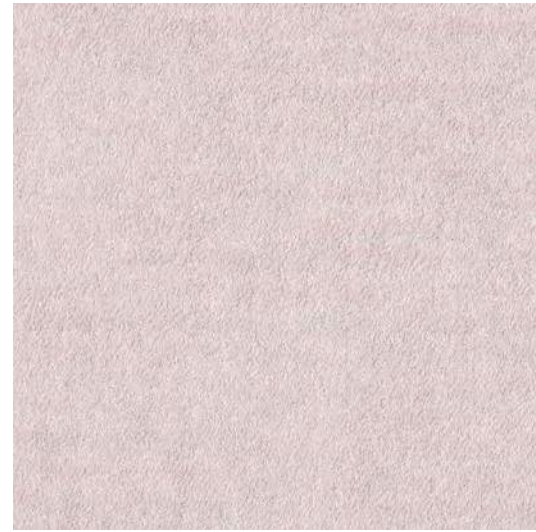
ECO42011



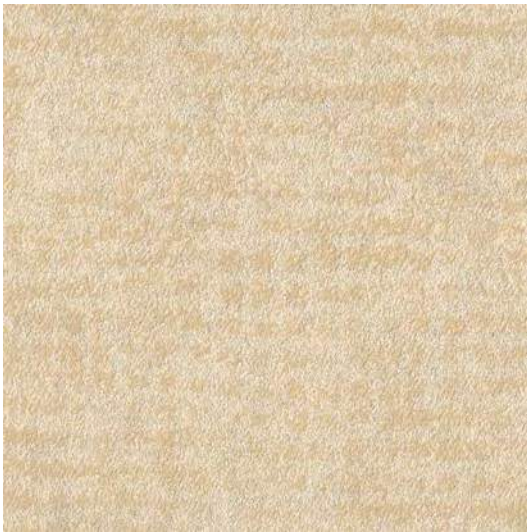
ECO42013



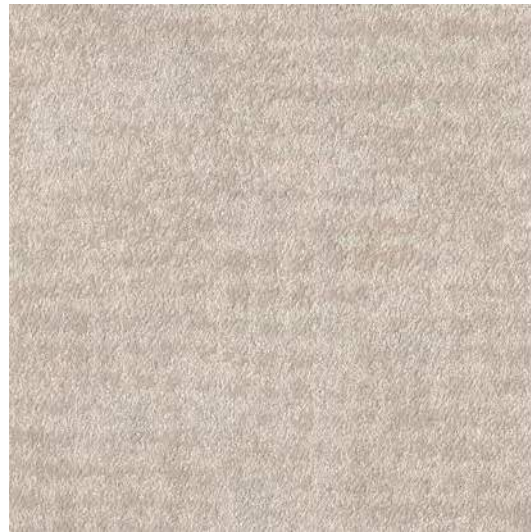
ECO42014



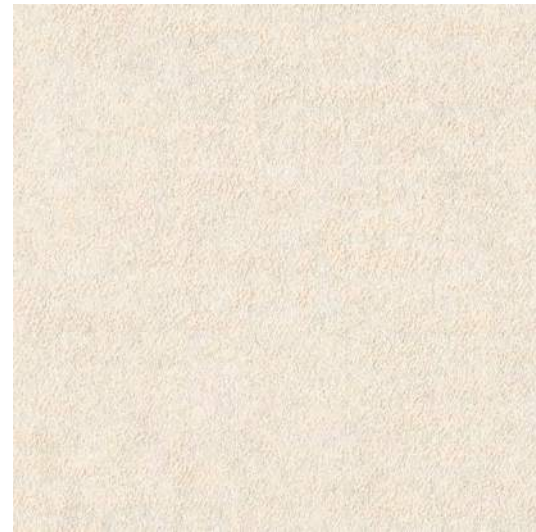
ECO42017



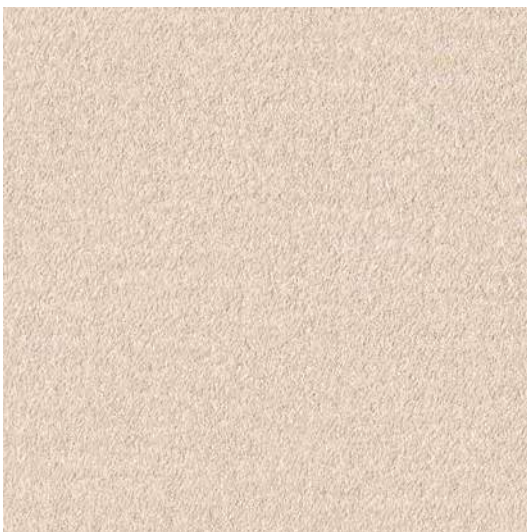
ECO42018



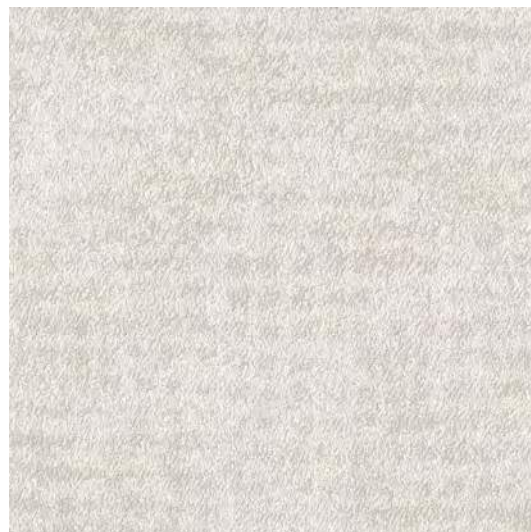
ECO42019



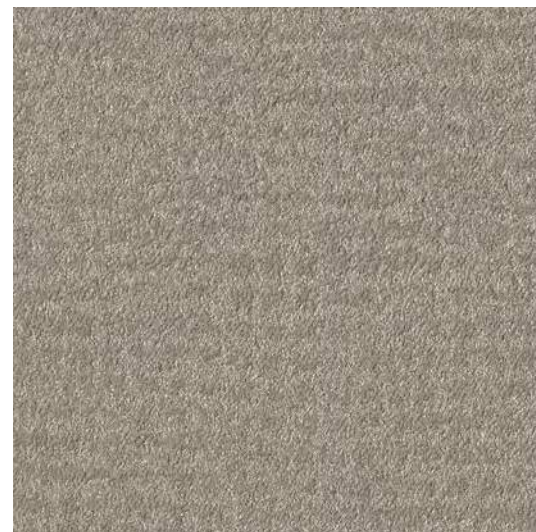
ECO42021



ECO42022



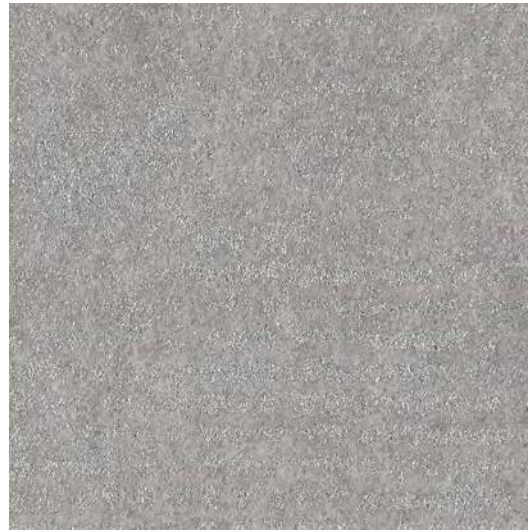
ECO42023



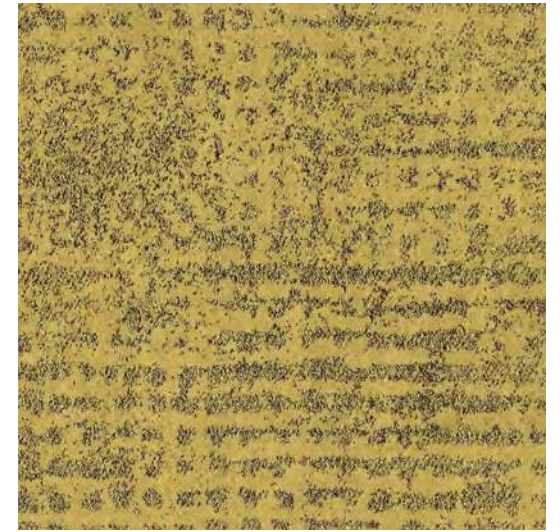
ECO42024



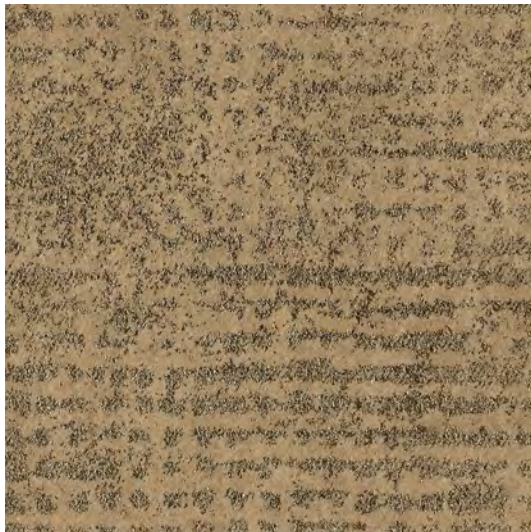
ECO42025



ECO42106



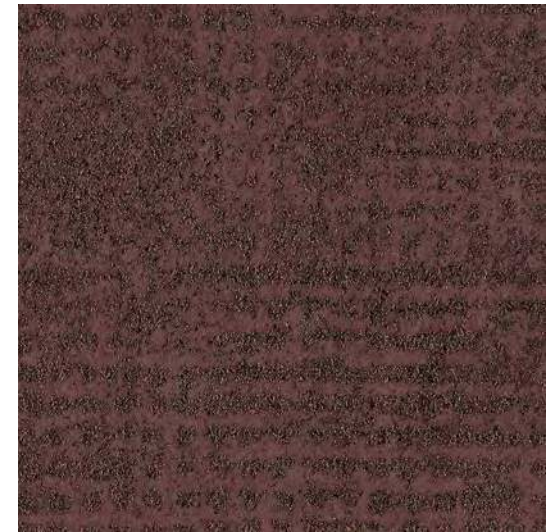
ECO42215



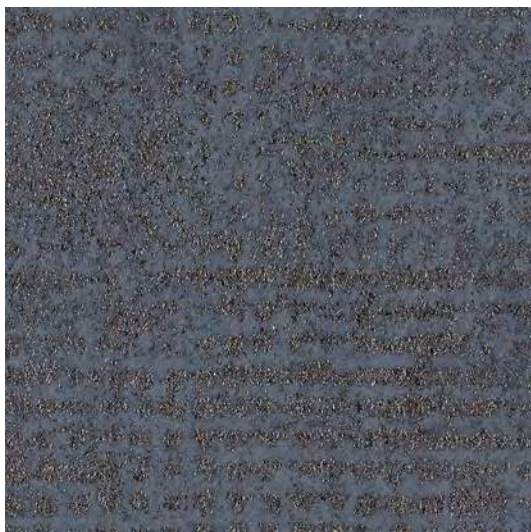
ECO42220



ECO42226



ECO42616



ECO42812



ECO42827

WASHI PAPER TEXTURE

Sold by the metre

ECO43807

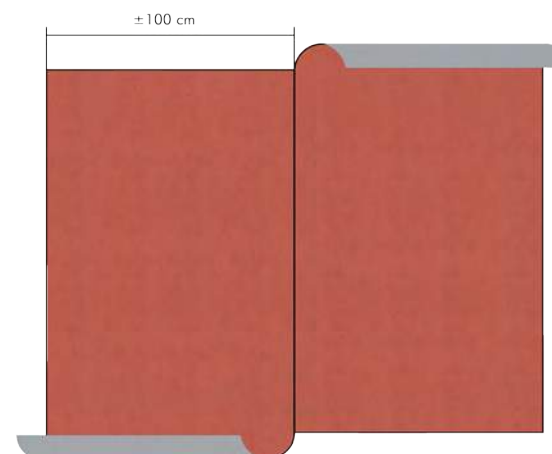


WEIGHT
ROLL WIDTH
COMPOSITION

± 146 g/m²
± 100 cm
Non-woven (Mixture of
cellulose and polyester)
Reverse Random
Horizontal: 0 cm
Vertical: 0 cm

MATCH:
REPEAT:

- Washable after installation
- Good light resistance: Xeno test 6-7
- Easy installation
- Breathable
- Fire resistant (EU: B, s1-d0 / US: Class A)
- Ecological, PVC Free
- Manufactured with recycled fibres
- Printed with solar energy
- Singapore Green Label Certified Product
- FSC® certified





ECO43801



ECO43802



ECO43803



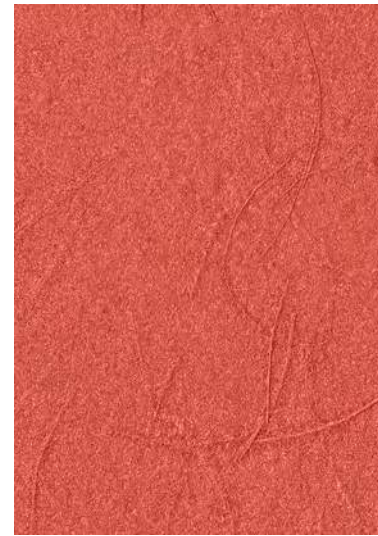
ECO43804



ECO43805



ECO43806



ECO43807



ECO43808



ECO43809



ECO43810



ECO43811



ECO43812

OXIDIZED LOOK

Sold by the metre

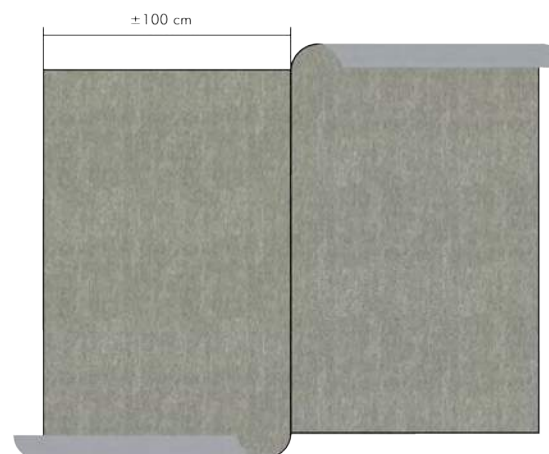


WEIGHT
ROLL WIDTH
COMPOSITION

± 188 g/m²
± 100 cm
Non-woven (Mixture of
cellulose and polyester)
Reverse Random
Horizontal: 0 cm
Vertical: 0 cm

MATCH:
REPEAT:

- Washable after installation
- Good light resistance: Xeno test 6-7
- Easy installation
- Breathable
- Fire resistant (EU: B, s1-d0 / US: Class A)
- Marine certified
- Ecological, PVC Free
- Manufactured with recycled fibres
- Printed with solar energy
- Singapore Green Label Certified Product
- FSC® certified





ECO44699



ECO44017



ECO44039



ECO44027



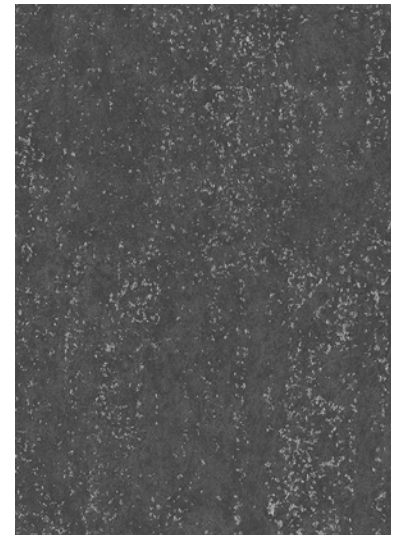
ECO44956



ECO44076



ECO44971



ECO44984



ECO44993



ECO44201



ECO44202



ECO44975

WOVEN SISAL EFFECT

Sold by the metre

ECO45608

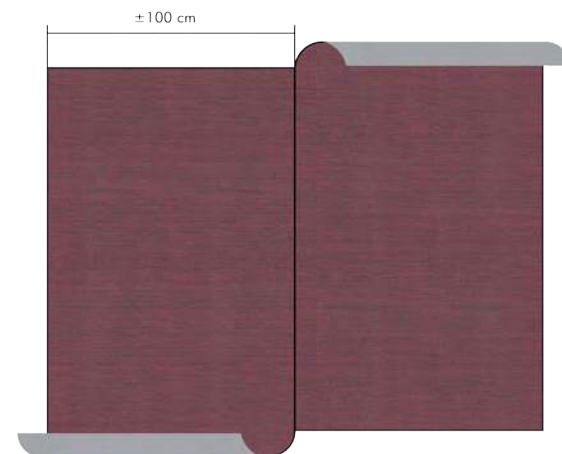


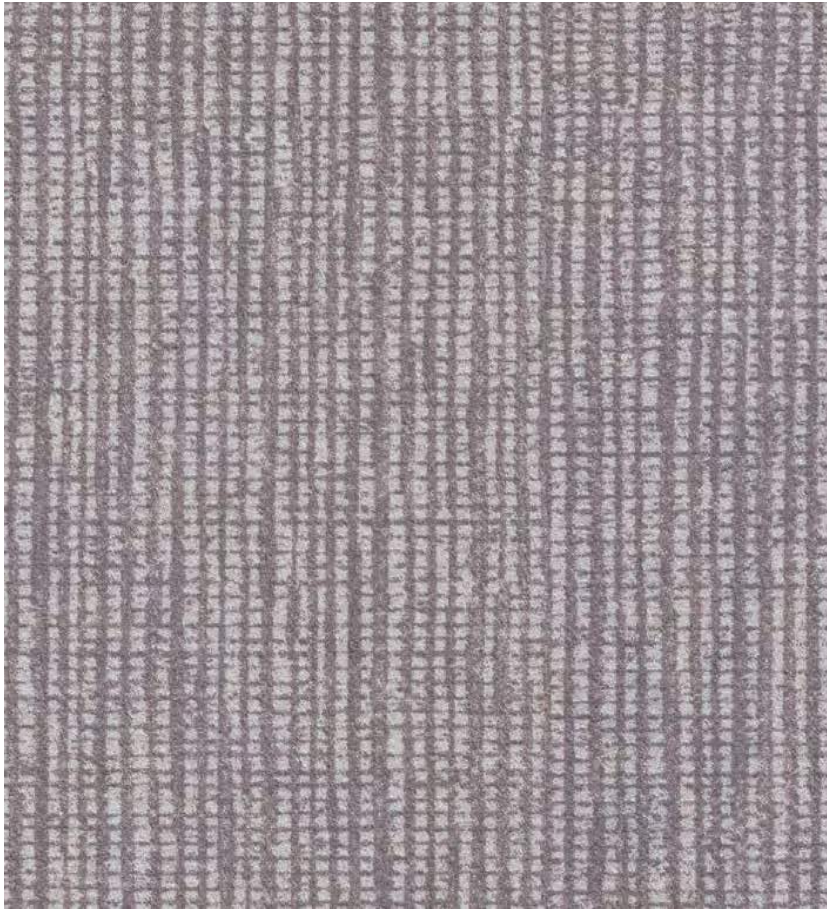
WEIGHT
ROLL WIDTH
COMPOSITION

± 188 g/m²
± 100 cm
Non-woven (Mixture of
cellulose and polyester)
Reverse Random
Horizontal: 0 cm
Vertical: 0 cm

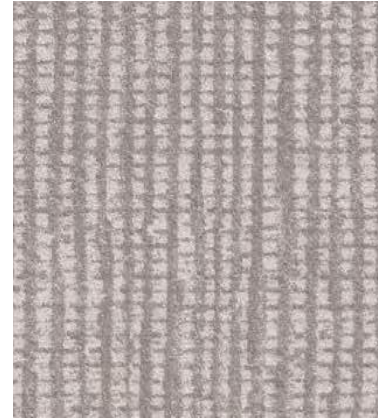
MATCH:
REPEAT:

- Washable after installation
- Good light resistance: Xeno test 6-7
- Easy installation
- Breathable
- Fire resistant (EU: B, s1-d0 / US: Class A)
- Marine certified
- Ecological, PVC Free
- Manufactured with recycled fibres
- Printed with solar energy
- Singapore Green Label Certified Product
- FSC® certified

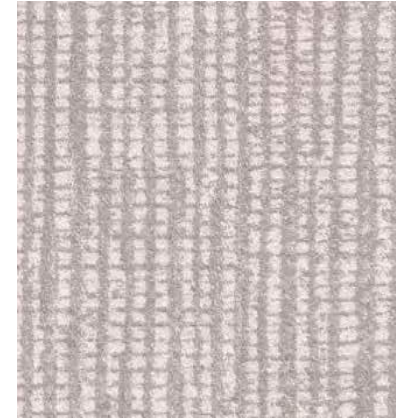




ECO45601



ECO45602



ECO45603



ECO45604



ECO45605



ECO45606



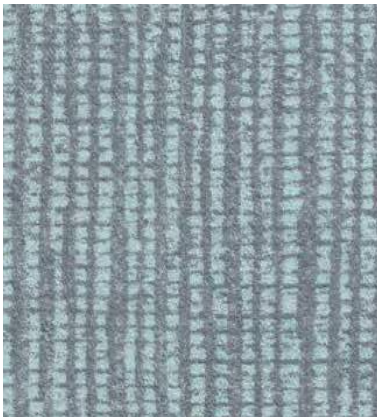
ECO45607



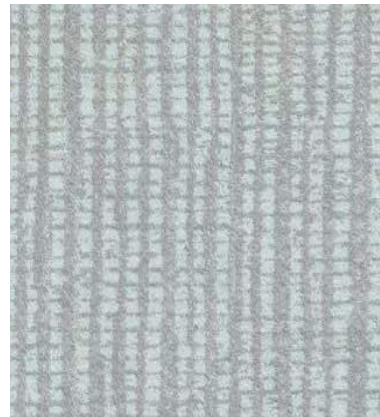
ECO45608



ECO45609



ECO45610



ECO45611



ECO45613



ECO45614

CONCRETE LOOK

Sold by the metre

ECO46140

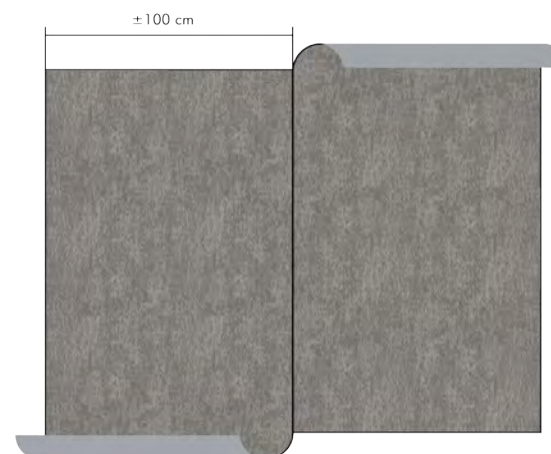


WEIGHT
ROLL WIDTH
COMPOSITION

± 184 g/m²
± 100 cm
Non-woven (Mixture of
cellulose and polyester)
Reverse Random
Horizontal: 0 cm
Vertical: 0 cm

MATCH:
REPEAT:

- Washable after installation
- Good light resistance: Xeno test 6-7
- Easy installation
- Breathable
- Fire resistant (EU: B, s1-d0 / US: Class A)
- Marine certified
- Ecological, PVC Free
- Manufactured with recycled fibres
- Printed with solar energy
- Singapore Green Label Certified Product
- FSC® certified





ECO46940



ECO46640



ECO46214



ECO46340



ECO46140



ECO46124



ECO46115



ECO46114



ECO46113



ECO46112



ECO46111



ECO46104

PURE PLAIN

Sold by the metre

ECO47501



ECO47508

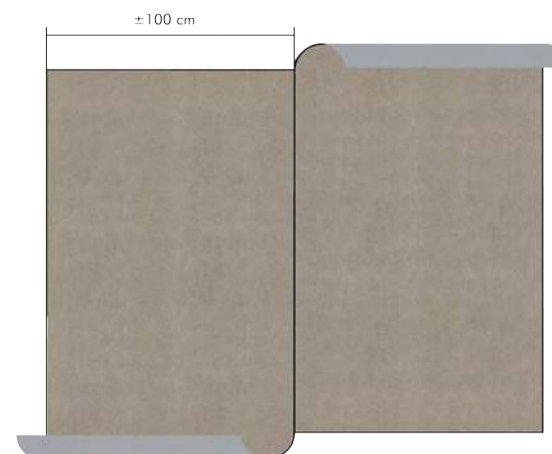


WEIGHT
ROLL WIDTH
COMPOSITION

± 196 g/m²
± 100 cm
Non-woven (Mixture of
cellulose and polyester)
Reverse Random
Horizontal: 0 cm
Vertical: 0 cm

MATCH:
REPEAT:

- Extra washable
- Good light resistance: Xeno test 6-7
- Easy installation
- Breathable
- Fire resistant (EU: B, s1-d0 / US: Class A)
- Marine certified
- Ecological, PVC Free
- Manufactured with recycled fibres
- Printed with solar energy
- Singapore Green Label Certified Product
- FSC® certified





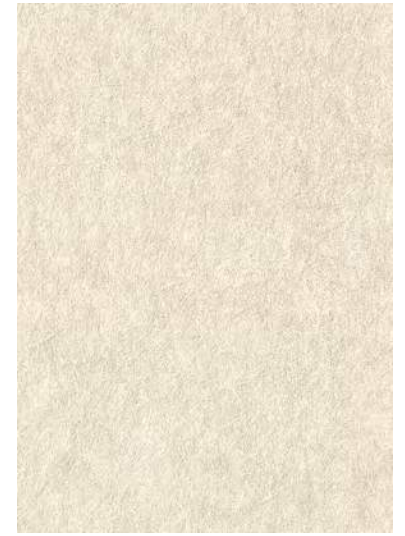
ECO47901



ECO47501



ECO47502



ECO47504



ECO47505



ECO47507



ECO47508



ECO47509



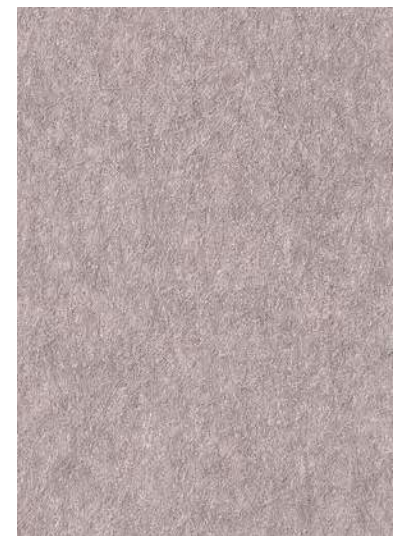
ECO47510



ECO47515



ECO47516

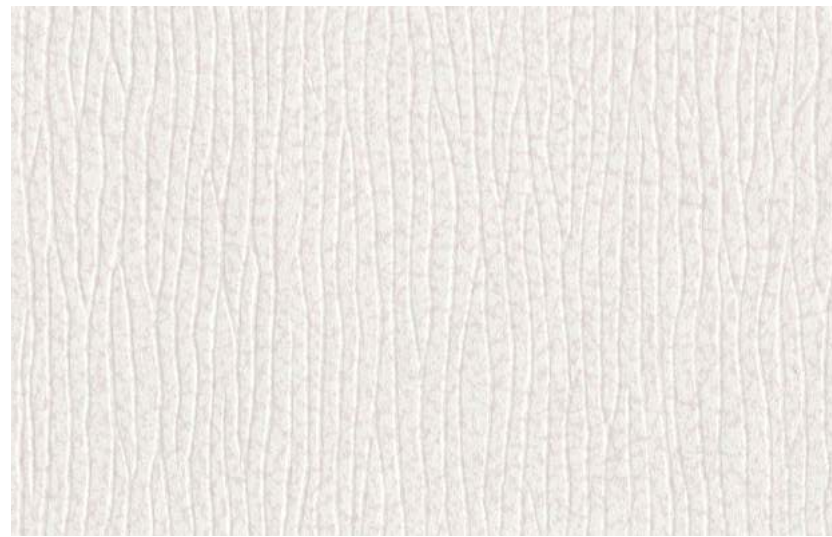


ECO47517

EMBOSSED WAVE

Sold by the metre

ECO48315



ECO48301



ECO48302



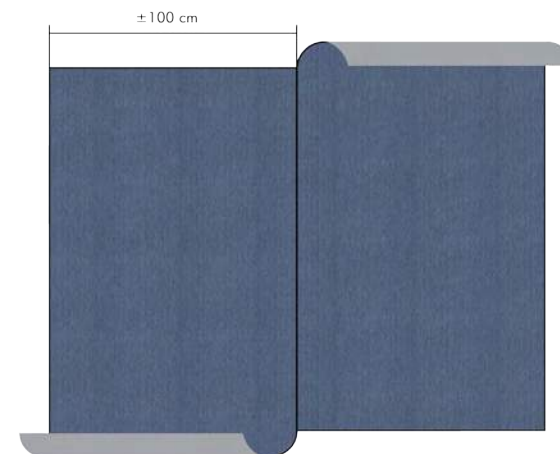
ECO48303

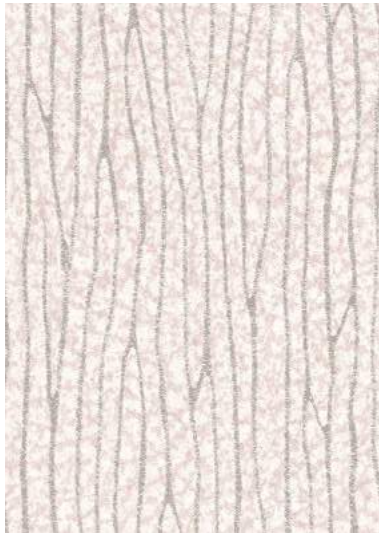
WEIGHT
ROLL WIDTH
COMPOSITION

± 196 g/m²
± 100 cm
Non-woven (Mixture of
cellulose and polyester)
Reverse Random
Horizontal: 0 cm
Vertical: 0 cm

MATCH:
REPEAT:

- Washable after installation
- Good light resistance: Xeno test 6-7
- Easy installation
- Breathable
- Fire resistant (EU: B, s1-d0 / US: Class A)
- Marine certified
- Ecological, PVC Free
- Manufactured with recycled fibres
- Printed with solar energy
- Singapore Green Label Certified Product
- FSC® certified

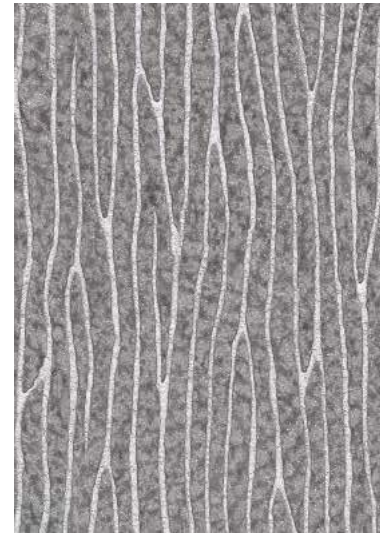




ECO48304



ECO48305



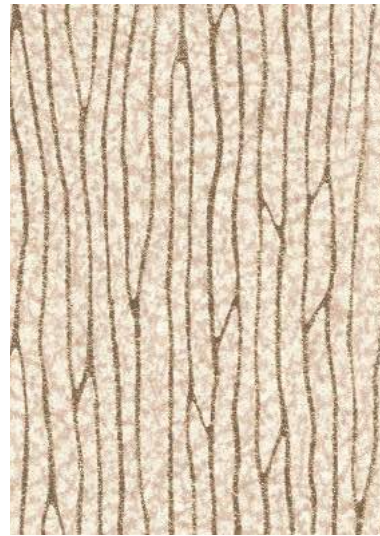
ECO48306



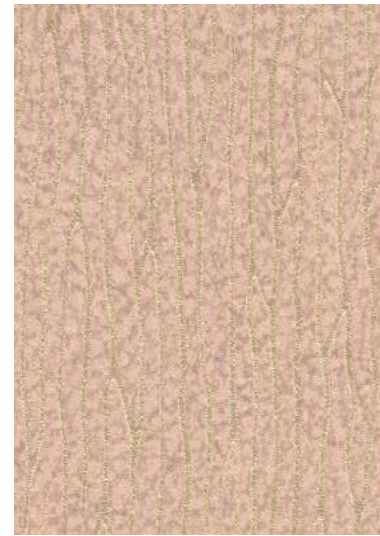
ECO48307



ECO48309



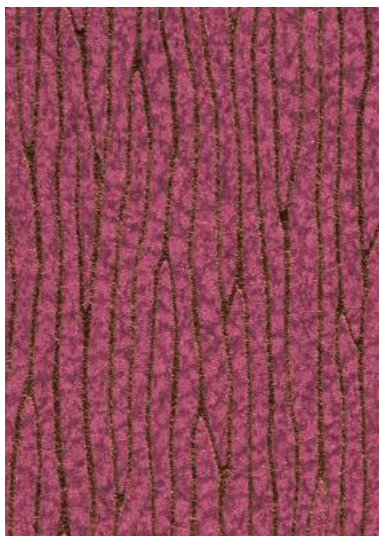
ECO48310



ECO48311



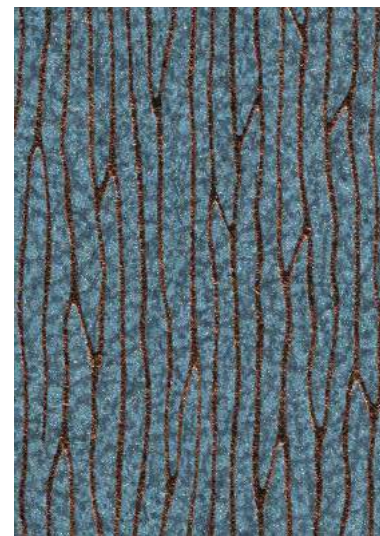
ECO48312



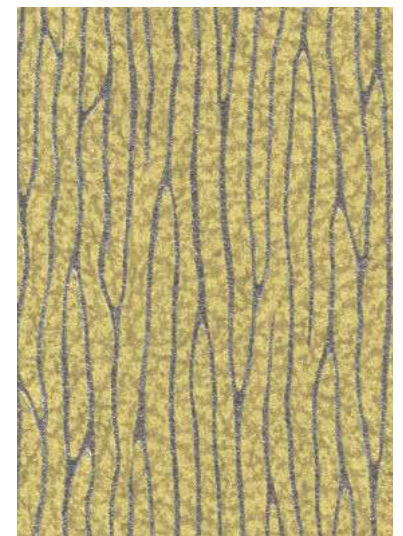
ECO48313



ECO48315

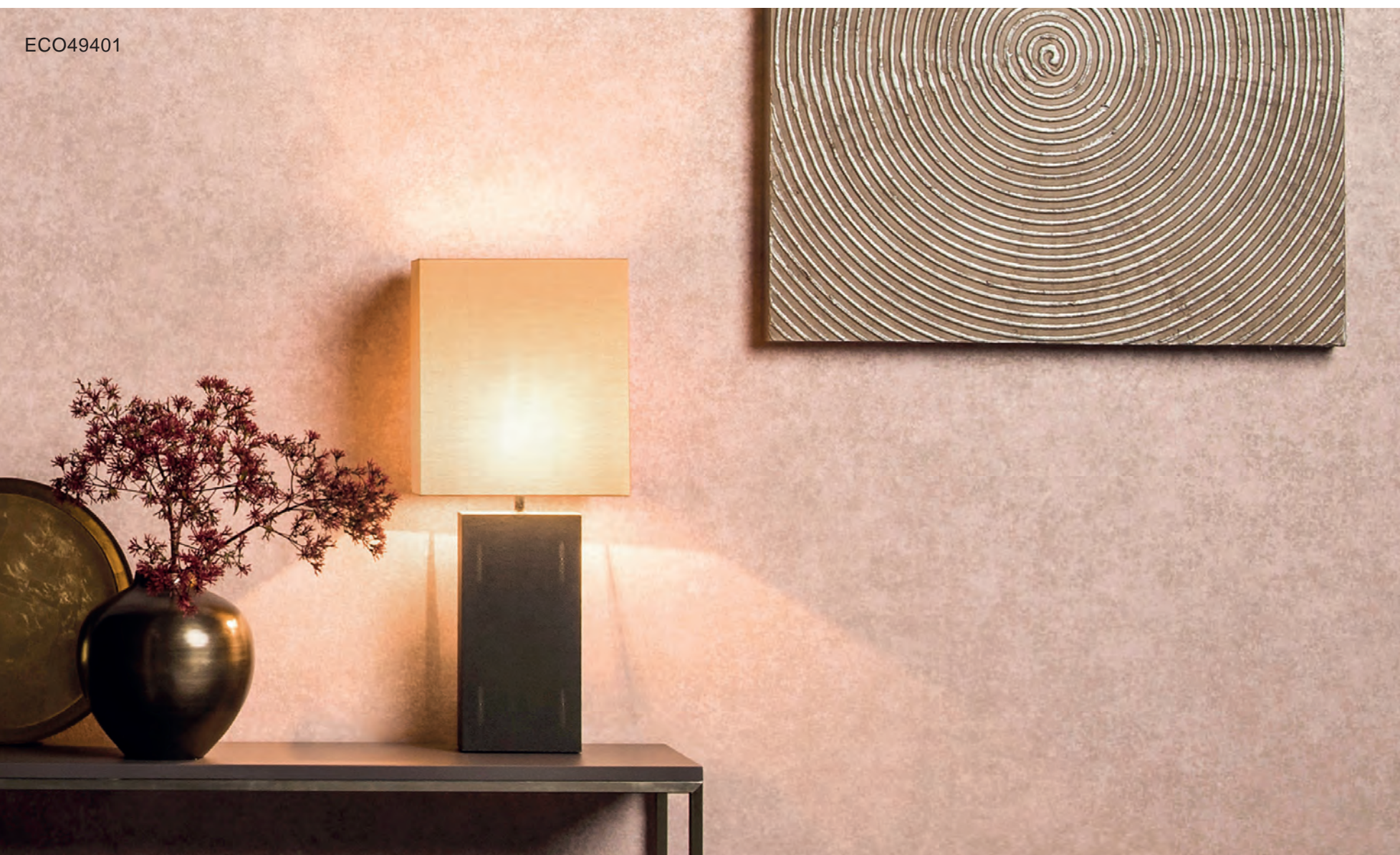


ECO48316



ECO48318

ECO49401

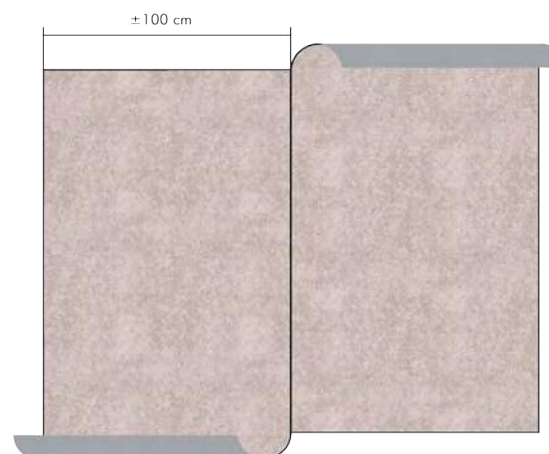


WEIGHT
ROLL WIDTH
COMPOSITION

± 196 g/m²
± 100 cm
Non-woven (Mixture of
cellulose and polyester)
Reverse Random
Horizontal: 0 cm
Vertical: 0 cm

MATCH:
REPEAT:

- Washable after installation
- Good light resistance: Xeno test 6-7
- Easy installation
- Breathable
- Fire resistant (EU: B, s1-d0 / US: Class A)
- Marine certified
- Ecological, PVC Free
- Manufactured with recycled fibres
- Printed with solar energy
- Singapore Green Label Certified Product
- FSC® certified





ECO49401



ECO49402



ECO49403



ECO49404



ECO49405



ECO49406



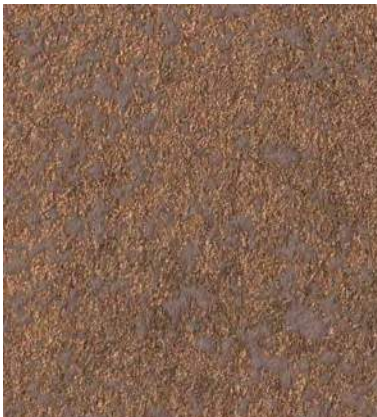
ECO49407



ECO49408



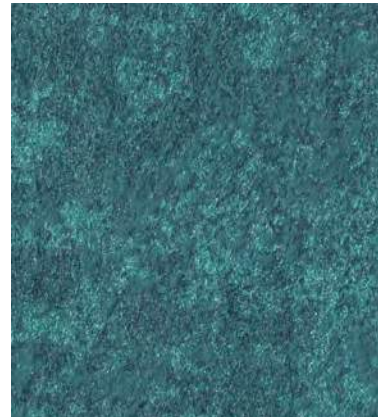
ECO49409



ECO49410



ECO49411



ECO49412



ECO49413

ECOWALL EMERALD (INDEX)

No	Pattern No	Pattern Name	Weight (g/m2)	Horizontal Repeat	Vertical Repeat	Pattern match	Backing	Width
1	ECO10100	Metallic Wave	184	± 2,7 cm	±11 cm	Reverse Match	Non-woven	± 100 cm
2	ECO10101	Metallic Wave	184	± 2,7 cm	±11 cm	Reverse Match	Non-woven	± 100 cm
3	ECO10102	Metallic Wave	184	± 2,7 cm	±11 cm	Reverse Match	Non-woven	± 100 cm
4	ECO10103	Metallic Wave	184	± 2,7 cm	±11 cm	Reverse Match	Non-woven	± 100 cm
5	ECO10104	Metallic Wave	184	± 2,7 cm	±11 cm	Reverse Match	Non-woven	± 100 cm
6	ECO10105	Metallic Wave	184	± 2,7 cm	±11 cm	Reverse Match	Non-woven	± 100 cm
7	ECO10106	Metallic Wave	184	± 2,7 cm	±11 cm	Reverse Match	Non-woven	± 100 cm
8	ECO10107	Metallic Wave	184	± 2,7 cm	±11 cm	Reverse Match	Non-woven	± 100 cm
9	ECO10108	Metallic Wave	184	± 2,7 cm	±11 cm	Reverse Match	Non-woven	± 100 cm
10	ECO10109	Metallic Wave	184	± 2,7 cm	±11 cm	Reverse Match	Non-woven	± 100 cm
11	ECO10110	Metallic Wave	184	± 2,7 cm	±11 cm	Reverse Match	Non-woven	± 100 cm
12	ECO10111	Metallic Wave	184	± 2,7 cm	±11 cm	Reverse Match	Non-woven	± 100 cm
13	ECO10112	Metallic Wave	184	± 2,7 cm	±11 cm	Reverse Match	Non-woven	± 100 cm
14	ECO10113	Metallic Wave	184	± 2,7 cm	±11 cm	Reverse Match	Non-woven	± 100 cm
15	ECO10114	Metallic Wave	184	± 2,7 cm	±11 cm	Reverse Match	Non-woven	± 100 cm
16	ECO10115	Metallic Wave	184	± 2,7 cm	±11 cm	Reverse Match	Non-woven	± 100 cm
17	ECO10116	Metallic Wave	184	± 2,7 cm	±11 cm	Reverse Match	Non-woven	± 100 cm
18	ECO10117	Metallic Wave	184	± 2,7 cm	±11 cm	Reverse Match	Non-woven	± 100 cm
19	ECO10131	Metallic Wave	184	± 2,7 cm	±11 cm	Reverse Match	Non-woven	± 100 cm
20	ECO10135	Metallic Wave	184	± 2,7 cm	±11 cm	Reverse Match	Non-woven	± 100 cm
21	ECO10136	Metallic Wave	184	± 2,7 cm	±11 cm	Reverse Match	Non-woven	± 100 cm
22	ECO10200	Metallic Stripe	188	0	0	Reverse Match	Non-woven	± 100 cm
23	ECO10201	Metallic Stripe	188	0	0	Reverse Match	Non-woven	± 100 cm
24	ECO10202	Metallic Stripe	188	0	0	Reverse Match	Non-woven	± 100 cm
25	ECO10203	Metallic Stripe	188	0	0	Reverse Match	Non-woven	± 100 cm
26	ECO10204	Metallic Stripe	188	0	0	Reverse Match	Non-woven	± 100 cm
27	ECO10205	Metallic Stripe	188	0	0	Reverse Match	Non-woven	± 100 cm
28	ECO10206	Metallic Stripe	188	0	0	Reverse Match	Non-woven	± 100 cm
29	ECO10207	Metallic Stripe	188	0	0	Reverse Match	Non-woven	± 100 cm
30	ECO10208	Metallic Stripe	188	0	0	Reverse Match	Non-woven	± 100 cm
31	ECO10209	Metallic Stripe	188	0	0	Reverse Match	Non-woven	± 100 cm
32	ECO10210	Metallic Stripe	188	0	0	Reverse Match	Non-woven	± 100 cm
33	ECO10211	Metallic Stripe	188	0	0	Reverse Match	Non-woven	± 100 cm
34	ECO10212	Metallic Stripe	188	0	0	Reverse Match	Non-woven	± 100 cm
35	ECO10213	Metallic Stripe	188	0	0	Reverse Match	Non-woven	± 100 cm
36	ECO10214	Metallic Stripe	188	0	0	Reverse Match	Non-woven	± 100 cm
37	ECO10215	Metallic Stripe	188	0	0	Reverse Match	Non-woven	± 100 cm
38	ECO10216	Metallic Stripe	188	0	0	Reverse Match	Non-woven	± 100 cm
39	ECO20191	Shiny Plain	196	0	0	Reverse Random	Non-woven	± 100 cm
40	ECO20192	Shiny Plain	196	0	0	Reverse Random	Non-woven	± 100 cm
41	ECO20193	Shiny Plain	196	0	0	Reverse Random	Non-woven	± 100 cm
42	ECO20194	Shiny Plain	196	0	0	Reverse Random	Non-woven	± 100 cm
43	ECO20195	Shiny Plain	196	0	0	Reverse Random	Non-woven	± 100 cm
44	ECO20196	Shiny Plain	196	0	0	Reverse Random	Non-woven	± 100 cm
45	ECO20197	Shiny Plain	196	0	0	Reverse Random	Non-woven	± 100 cm
46	ECO20198	Shiny Plain	196	0	0	Reverse Random	Non-woven	± 100 cm
47	ECO20199	Shiny Plain	196	0	0	Reverse Random	Non-woven	± 100 cm
48	ECO20291	Stone Look	196	0	0	Reverse Random	Non-woven	± 100 cm
49	ECO20292	Stone Look	196	0	0	Reverse Random	Non-woven	± 100 cm
50	ECO20293	Stone Look	196	0	0	Reverse Random	Non-woven	± 100 cm
51	ECO20294	Stone Look	196	0	0	Reverse Random	Non-woven	± 100 cm
52	ECO20295	Stone Look	196	0	0	Reverse Random	Non-woven	± 100 cm
53	ECO20296	Stone Look	196	0	0	Reverse Random	Non-woven	± 100 cm
54	ECO20297	Stone Look	196	0	0	Reverse Random	Non-woven	± 100 cm
55	ECO20361	Iridescent Stripe	188	0	0	Straight Random	Non-woven	± 100 cm
56	ECO20362	Iridescent Stripe	188	0	0	Straight Random	Non-woven	± 100 cm
57	ECO20363	Iridescent Stripe	188	0	0	Straight Random	Non-woven	± 100 cm
58	ECO20364	Iridescent Stripe	188	0	0	Straight Random	Non-woven	± 100 cm

ECOWALL EMERALD (INDEX)

No	Pattern No	Pattern Name	Weight (g/m2)	Horizontal Repeat	Vertical Repeat	Pattern match	Backing	Width
59	ECO20481	Herb Design	146	± 100 cm	± 64 cm	Straight Match	Non-woven	± 100 cm
60	ECO20482	Herb Design	146	± 100 cm	± 64 cm	Straight Match	Non-woven	± 100 cm
61	ECO20483	Herb Design	146	± 100 cm	± 64 cm	Straight Match	Non-woven	± 100 cm
62	ECO20484	Herb Design	146	± 100 cm	± 64 cm	Straight Match	Non-woven	± 100 cm
63	ECO20485	Herb Design	146	± 100 cm	± 64 cm	Straight Match	Non-woven	± 100 cm
64	ECO30301	Textured Plain	196	0	0	Reverse Random	Non-woven	± 100 cm
65	ECO30302	Textured Plain	196	0	0	Reverse Random	Non-woven	± 100 cm
66	ECO30303	Textured Plain	196	0	0	Reverse Random	Non-woven	± 100 cm
67	ECO30304	Textured Plain	196	0	0	Reverse Random	Non-woven	± 100 cm
68	ECO30306	Textured Plain	196	0	0	Reverse Random	Non-woven	± 100 cm
69	ECO30307	Textured Plain	196	0	0	Reverse Random	Non-woven	± 100 cm
70	ECO30308	Textured Plain	196	0	0	Reverse Random	Non-woven	± 100 cm
71	ECO30309	Textured Plain	196	0	0	Reverse Random	Non-woven	± 100 cm
72	ECO30310	Textured Plain	196	0	0	Reverse Random	Non-woven	± 100 cm
73	ECO30311	Textured Plain	196	0	0	Reverse Random	Non-woven	± 100 cm
74	ECO30312	Textured Plain	196	0	0	Reverse Random	Non-woven	± 100 cm
75	ECO30313	Textured Plain	196	0	0	Reverse Random	Non-woven	± 100 cm
76	ECO30314	Textured Plain	196	0	0	Reverse Random	Non-woven	± 100 cm
77	ECO30315	Textured Plain	196	0	0	Reverse Random	Non-woven	± 100 cm
78	ECO30316	Textured Plain	196	0	0	Reverse Random	Non-woven	± 100 cm
79	ECO30317	Textured Plain	196	0	0	Reverse Random	Non-woven	± 100 cm
80	ECO30318	Textured Plain	196	0	0	Reverse Random	Non-woven	± 100 cm
81	ECO30319	Textured Plain	196	0	0	Reverse Random	Non-woven	± 100 cm
82	ECO40401	Embossed Stripe	146	0	0	Straight Random	Non-woven	± 100 cm
83	ECO40402	Embossed Stripe	146	0	0	Straight Random	Non-woven	± 100 cm
84	ECO40403	Embossed Stripe	146	0	0	Straight Random	Non-woven	± 100 cm
85	ECO40405	Embossed Stripe	146	0	0	Straight Random	Non-woven	± 100 cm
86	ECO40407	Embossed Stripe	146	0	0	Straight Random	Non-woven	± 100 cm
87	ECO40408	Embossed Stripe	146	0	0	Straight Random	Non-woven	± 100 cm
88	ECO40409	Embossed Stripe	146	0	0	Straight Random	Non-woven	± 100 cm
89	ECO40410	Embossed Stripe	146	0	0	Straight Random	Non-woven	± 100 cm
90	ECO40411	Embossed Stripe	146	0	0	Straight Random	Non-woven	± 100 cm
91	ECO40412	Embossed Stripe	146	0	0	Straight Random	Non-woven	± 100 cm
92	ECO40413	Embossed Stripe	146	0	0	Straight Random	Non-woven	± 100 cm
93	ECO40414	Embossed Stripe	146	0	0	Straight Random	Non-woven	± 100 cm
94	ECO41101	Organza Effect	196	0	0	Reverse Random	Non-woven	± 100 cm
95	ECO41102	Organza Effect	196	0	0	Reverse Random	Non-woven	± 100 cm
96	ECO41103	Organza Effect	196	0	0	Reverse Random	Non-woven	± 100 cm
97	ECO41104	Organza Effect	196	0	0	Reverse Random	Non-woven	± 100 cm
98	ECO41105	Organza Effect	196	0	0	Reverse Random	Non-woven	± 100 cm
99	ECO41106	Organza Effect	196	0	0	Reverse Random	Non-woven	± 100 cm
100	ECO41107	Organza Effect	196	0	0	Reverse Random	Non-woven	± 100 cm
101	ECO41108	Organza Effect	196	0	0	Reverse Random	Non-woven	± 100 cm
102	ECO41110	Organza Effect	196	0	0	Reverse Random	Non-woven	± 100 cm
103	ECO41111	Organza Effect	196	0	0	Reverse Random	Non-woven	± 100 cm
104	ECO41112	Organza Effect	196	0	0	Reverse Random	Non-woven	± 100 cm
105	ECO41113	Organza Effect	196	0	0	Reverse Random	Non-woven	± 100 cm
106	ECO41114	Organza Effect	196	0	0	Reverse Random	Non-woven	± 100 cm
107	ECO41115	Organza Effect	196	0	0	Reverse Random	Non-woven	± 100 cm
108	ECO41116	Organza Effect	196	0	0	Reverse Random	Non-woven	± 100 cm
109	ECO41117	Organza Effect	196	0	0	Reverse Random	Non-woven	± 100 cm
110	ECO41118	Organza Effect	196	0	0	Reverse Random	Non-woven	± 100 cm
111	ECO41119	Organza Effect	196	0	0	Reverse Random	Non-woven	± 100 cm
112	ECO41120	Organza Effect	196	0	0	Reverse Random	Non-woven	± 100 cm
113	ECO41121	Organza Effect	196	0	0	Reverse Random	Non-woven	± 100 cm
114	ECO41122	Organza Effect	196	0	0	Reverse Random	Non-woven	± 100 cm
115	ECO42001	Faded Textile Effect	184	0	0	Reverse Random	Non-woven	± 100 cm
116	ECO42002	Faded Textile Effect	184	0	0	Reverse Random	Non-woven	± 100 cm

ECOWALL EMERALD (INDEX)

No	Pattern No	Pattern Name	Weight (g/m2)	Horizontal Repeat	Vertical Repeat	Pattern match	Backing	Width
117	ECO42003	Faded Textile Effect	184	0	0	Reverse Random	Non-woven	± 100 cm
118	ECO42004	Faded Textile Effect	184	0	0	Reverse Random	Non-woven	± 100 cm
119	ECO42005	Faded Textile Effect	184	0	0	Reverse Random	Non-woven	± 100 cm
120	ECO42007	Faded Textile Effect	184	0	0	Reverse Random	Non-woven	± 100 cm
121	ECO42009	Faded Textile Effect	184	0	0	Reverse Random	Non-woven	± 100 cm
122	ECO42010	Faded Textile Effect	184	0	0	Reverse Random	Non-woven	± 100 cm
123	ECO42011	Faded Textile Effect	184	0	0	Reverse Random	Non-woven	± 100 cm
124	ECO42013	Faded Textile Effect	184	0	0	Reverse Random	Non-woven	± 100 cm
125	ECO42014	Faded Textile Effect	184	0	0	Reverse Random	Non-woven	± 100 cm
126	ECO42017	Faded Textile Effect	184	0	0	Reverse Random	Non-woven	± 100 cm
127	ECO42018	Faded Textile Effect	184	0	0	Reverse Random	Non-woven	± 100 cm
128	ECO42019	Faded Textile Effect	184	0	0	Reverse Random	Non-woven	± 100 cm
129	ECO42021	Faded Textile Effect	184	0	0	Reverse Random	Non-woven	± 100 cm
130	ECO42022	Faded Textile Effect	184	0	0	Reverse Random	Non-woven	± 100 cm
131	ECO42023	Faded Textile Effect	184	0	0	Reverse Random	Non-woven	± 100 cm
132	ECO42024	Faded Textile Effect	184	0	0	Reverse Random	Non-woven	± 100 cm
133	ECO42025	Faded Textile Effect	184	0	0	Reverse Random	Non-woven	± 100 cm
134	ECO42106	Faded Textile Effect	184	0	0	Reverse Random	Non-woven	± 100 cm
135	ECO42215	Faded Textile Effect	184	0	0	Reverse Random	Non-woven	± 100 cm
136	ECO42220	Faded Textile Effect	184	0	0	Reverse Random	Non-woven	± 100 cm
137	ECO42226	Faded Textile Effect	184	0	0	Reverse Random	Non-woven	± 100 cm
138	ECO42616	Faded Textile Effect	184	0	0	Reverse Random	Non-woven	± 100 cm
139	ECO42812	Faded Textile Effect	184	0	0	Reverse Random	Non-woven	± 100 cm
140	ECO42827	Faded Textile Effect	184	0	0	Reverse Random	Non-woven	± 100 cm
141	ECO43801	Washi Paper Texture	146	0	0	Reverse Random	Non-woven	± 100 cm
142	ECO43802	Washi Paper Texture	146	0	0	Reverse Random	Non-woven	± 100 cm
143	ECO43803	Washi Paper Texture	146	0	0	Reverse Random	Non-woven	± 100 cm
144	ECO43804	Washi Paper Texture	146	0	0	Reverse Random	Non-woven	± 100 cm
145	ECO43805	Washi Paper Texture	146	0	0	Reverse Random	Non-woven	± 100 cm
146	ECO43806	Washi Paper Texture	146	0	0	Reverse Random	Non-woven	± 100 cm
147	ECO43807	Washi Paper Texture	146	0	0	Reverse Random	Non-woven	± 100 cm
148	ECO43808	Washi Paper Texture	146	0	0	Reverse Random	Non-woven	± 100 cm
149	ECO43809	Washi Paper Texture	146	0	0	Reverse Random	Non-woven	± 100 cm
150	ECO43810	Washi Paper Texture	146	0	0	Reverse Random	Non-woven	± 100 cm
151	ECO43811	Washi Paper Texture	146	0	0	Reverse Random	Non-woven	± 100 cm
152	ECO43812	Washi Paper Texture	146	0	0	Reverse Random	Non-woven	± 100 cm
153	ECO44699	Oxidized Look	188	0	0	Reverse Random	Non-woven	± 100 cm
154	ECO44017	Oxidized Look	188	0	0	Reverse Random	Non-woven	± 100 cm
155	ECO44039	Oxidized Look	188	0	0	Reverse Random	Non-woven	± 100 cm
156	ECO44027	Oxidized Look	188	0	0	Reverse Random	Non-woven	± 100 cm
157	ECO44956	Oxidized Look	188	0	0	Reverse Random	Non-woven	± 100 cm
158	ECO44076	Oxidized Look	188	0	0	Reverse Random	Non-woven	± 100 cm
159	ECO44971	Oxidized Look	188	0	0	Reverse Random	Non-woven	± 100 cm
160	ECO44984	Oxidized Look	188	0	0	Reverse Random	Non-woven	± 100 cm
161	ECO44993	Oxidized Look	188	0	0	Reverse Random	Non-woven	± 100 cm
162	ECO44201	Oxidized Look	188	0	0	Reverse Random	Non-woven	± 100 cm
163	ECO44202	Oxidized Look	188	0	0	Reverse Random	Non-woven	± 100 cm
164	ECO44975	Oxidized Look	188	0	0	Reverse Random	Non-woven	± 100 cm
165	ECO45601	Woven Sisal Effect	188	0	0	Reverse Random	Non-woven	± 100 cm
166	ECO45602	Woven Sisal Effect	188	0	0	Reverse Random	Non-woven	± 100 cm
167	ECO45603	Woven Sisal Effect	188	0	0	Reverse Random	Non-woven	± 100 cm
168	ECO45604	Woven Sisal Effect	188	0	0	Reverse Random	Non-woven	± 100 cm
169	ECO45605	Woven Sisal Effect	188	0	0	Reverse Random	Non-woven	± 100 cm
170	ECO45606	Woven Sisal Effect	188	0	0	Reverse Random	Non-woven	± 100 cm
171	ECO45607	Woven Sisal Effect	188	0	0	Reverse Random	Non-woven	± 100 cm
172	ECO45608	Woven Sisal Effect	188	0	0	Reverse Random	Non-woven	± 100 cm
173	ECO45609	Woven Sisal Effect	188	0	0	Reverse Random	Non-woven	± 100 cm
174	ECO45610	Woven Sisal Effect	188	0	0	Reverse Random	Non-woven	± 100 cm

ECOWALL EMERALD (INDEX)

No	Pattern No	Pattern Name	Weight (g/m2)	Horizontal Repeat	Vertical Repeat	Pattern match	Backing	Width
175	ECO45611	Woven Sisal Effect	188	0	0	Reverse Random	Non-woven	± 100 cm
176	ECO45613	Woven Sisal Effect	188	0	0	Reverse Random	Non-woven	± 100 cm
177	ECO45414	Woven Sisal Effect	188	0	0	Reverse Random	Non-woven	± 100 cm
178	ECO46940	Concrete Look	184	0	0	Reverse Random	Non-woven	± 100 cm
179	ECO46640	Concrete Look	184	0	0	Reverse Random	Non-woven	± 100 cm
180	ECO46214	Concrete Look	184	0	0	Reverse Random	Non-woven	± 100 cm
181	ECO46340	Concrete Look	184	0	0	Reverse Random	Non-woven	± 100 cm
182	ECO46140	Concrete Look	184	0	0	Reverse Random	Non-woven	± 100 cm
183	ECO46124	Concrete Look	184	0	0	Reverse Random	Non-woven	± 100 cm
184	ECO46115	Concrete Look	184	0	0	Reverse Random	Non-woven	± 100 cm
185	ECO46114	Concrete Look	184	0	0	Reverse Random	Non-woven	± 100 cm
186	ECO46113	Concrete Look	184	0	0	Reverse Random	Non-woven	± 100 cm
187	ECO46112	Concrete Look	184	0	0	Reverse Random	Non-woven	± 100 cm
188	ECO46111	Concrete Look	184	0	0	Reverse Random	Non-woven	± 100 cm
189	ECO46104	Concrete Look	184	0	0	Reverse Random	Non-woven	± 100 cm
190	ECO47901	Pure Plain	196	0	0	Reverse Random	Non-woven	± 100 cm
191	ECO47501	Pure Plain	196	0	0	Reverse Random	Non-woven	± 100 cm
192	ECO47502	Pure Plain	196	0	0	Reverse Random	Non-woven	± 100 cm
193	ECO47504	Pure Plain	196	0	0	Reverse Random	Non-woven	± 100 cm
194	ECO47505	Pure Plain	196	0	0	Reverse Random	Non-woven	± 100 cm
195	ECO47507	Pure Plain	196	0	0	Reverse Random	Non-woven	± 100 cm
196	ECO47508	Pure Plain	196	0	0	Reverse Random	Non-woven	± 100 cm
197	ECO47509	Pure Plain	196	0	0	Reverse Random	Non-woven	± 100 cm
198	ECO47510	Pure Plain	196	0	0	Reverse Random	Non-woven	± 100 cm
199	ECO47515	Pure Plain	196	0	0	Reverse Random	Non-woven	± 100 cm
200	ECO47516	Pure Plain	196	0	0	Reverse Random	Non-woven	± 100 cm
201	ECO47517	Pure Plain	196	0	0	Reverse Random	Non-woven	± 100 cm
202	ECO48301	Embossed Wave	196	0	0	Reverse Random	Non-woven	± 100 cm
203	ECO48302	Embossed Wave	196	0	0	Reverse Random	Non-woven	± 100 cm
204	ECO48303	Embossed Wave	196	0	0	Reverse Random	Non-woven	± 100 cm
205	ECO48304	Embossed Wave	196	0	0	Reverse Random	Non-woven	± 100 cm
206	ECO48305	Embossed Wave	196	0	0	Reverse Random	Non-woven	± 100 cm
207	ECO48306	Embossed Wave	196	0	0	Reverse Random	Non-woven	± 100 cm
208	ECO48307	Embossed Wave	196	0	0	Reverse Random	Non-woven	± 100 cm
209	ECO48309	Embossed Wave	196	0	0	Reverse Random	Non-woven	± 100 cm
210	ECO48310	Embossed Wave	196	0	0	Reverse Random	Non-woven	± 100 cm
211	ECO48311	Embossed Wave	196	0	0	Reverse Random	Non-woven	± 100 cm
212	ECO48312	Embossed Wave	196	0	0	Reverse Random	Non-woven	± 100 cm
213	ECO48313	Embossed Wave	196	0	0	Reverse Random	Non-woven	± 100 cm
214	ECO48315	Embossed Wave	196	0	0	Reverse Random	Non-woven	± 100 cm
215	ECO48316	Embossed Wave	196	0	0	Reverse Random	Non-woven	± 100 cm
216	ECO48318	Embossed Wave	196	0	0	Reverse Random	Non-woven	± 100 cm
217	ECO49401	Chalky	196	0	0	Reverse Random	Non-woven	± 100 cm
218	ECO49402	Chalky	196	0	0	Reverse Random	Non-woven	± 100 cm
219	ECO49403	Chalky	196	0	0	Reverse Random	Non-woven	± 100 cm
220	ECO49404	Chalky	196	0	0	Reverse Random	Non-woven	± 100 cm
221	ECO49405	Chalky	196	0	0	Reverse Random	Non-woven	± 100 cm
222	ECO49406	Chalky	196	0	0	Reverse Random	Non-woven	± 100 cm
223	ECO49407	Chalky	196	0	0	Reverse Random	Non-woven	± 100 cm
224	ECO49408	Chalky	196	0	0	Reverse Random	Non-woven	± 100 cm
225	ECO49409	Chalky	196	0	0	Reverse Random	Non-woven	± 100 cm
226	ECO49410	Chalky	196	0	0	Reverse Random	Non-woven	± 100 cm
227	ECO49411	Chalky	196	0	0	Reverse Random	Non-woven	± 100 cm
228	ECO49412	Chalky	196	0	0	Reverse Random	Non-woven	± 100 cm
229	ECO49413	Chalky	196	0	0	Reverse Random	Non-woven	± 100 cm

Wallcovering Adhesive



Specially formulated for all types of contract wallcoverings

Non Hazardous, Non Toxic, Non Flammable, Non-Staining

Solvent Free and Formaldehyde Free

VOC is 0.45mg/kg

Made in England



Complies to:

- ♥ Regulation (EC No 1907/2006)
- ♥ CLP European Regulation (EC) No 1272/2008
- ♥ BS3046/1981



Installation and Maintenance Guidelines

BEFORE YOU BEGIN

Examine the material carefully to ensure that the pattern, colour, and quality are satisfactory and as ordered. Check that the quantity and dimensions match the required specifications, prior to cutting. In the event that any discrepancies are found, STOP and contact Goodrich Global before proceeding.

We recommend that the wall moisture content does not exceed 4% using a reputable moisture meter, and that active moisture infiltration, condensation, and/or accumulation - particularly in warm, humid climates - is not present. If walls show mould, mildew or visible moisture damage, or if moisture content exceeds recommendations, do not proceed with installation until the condition has been fully corrected under the direction of a qualified professional. Goodrich Global will not be responsible for any performance or quality issues if moisture problems are not addressed before or following installation.

HANGING GUIDELINES

Wallcovering rolls are numbered consecutively and should be cut and installed in reverse sequence, starting with the highest numbered roll. All strips should be hung in sequence as they are cut from the roll, using full widths of material, whenever possible. Install the wallcovering under permanent lighting conditions to evaluate colour and texture uniformity.

When hanging non-reversible or matching patterns, measure the wall height, allowing for pattern match, add 4", and take trim using a straight edge to ensure alignment across seams. Large, dominant pattern repeats require more careful planning as far as starting point, ceiling line, chair rails, door/window headers, etc. Patterns are meant to match at eye level and may run off slightly at the top and bottom of the wall. When hanging textured or random-match patterns, reverse hang alternate strips for a more uniform appearance; overlap and double cut, being careful not to score the wall. If the pattern effect is not acceptable after three strips are hung, re-hang strip #2 without reversing.

If any defect, colour variation, or unacceptable pattern effect is noticeable after three panels are cut and hung, STOP and contact Goodrich Global immediately. Goodrich Global cannot accept any claims on labour or material after more than three lengths have been installed.

ADHESIVE APPLICATION

Apply a uniform coat of a premixed vinyl wallcovering adhesive to the back of the material using a short-napped paint roller or stiff bristle brush (a pasting machine can be used at the installer's discretion). Goodrich WA202 adhesive is recommended for heavyweight vinyl wallcovering. Fold each sheet over and allow up to 10 minutes booking time for the adhesive to penetrate the backing of the lightweight vinyl material (up to 15 minutes for heavyweight vinyl), and to avoid paste drying at the edges.

INSTALLATION

Hang the first strip to a plumb line, overlapping the ceiling and baseboard, within 12 minutes of paste application. Use a stiff bristle brush to ensure that the wallcovering makes contact with the wall. A plastic smoother can also be used on non-metallic Vinyls, providing only light pressure is applied (do not use sharp-edged tools). Smooth from the middle to the outside edges, being careful not to stretch the material, and work out all air bubbles. Trim at the ceiling and baseboard with a sharp razor blade. For matched patterns, butt the second strip to the edge of the first and smooth out firmly. When double cutting non-matching patterns, place a 2-3" wide strip behind the seam to avoid scoring the wall. Flatten seams exerting light pressure with a seam roller. Low-adhesive painter's tape can be used to keep the face of the seams clean. Before applying the next strip, trim the top and bottom as with the first panel, and proceed in the same manner around the room.

Avoid cutting narrow widths of material for placement above doors and below windows. Vertical joints should not occur less than six inches from inside or outside corners. When trimming at chair rails and ceilings, always use a broad knife rather than a straight edge. Take extra care in keeping the adhesive off the face of the wallcovering.

Remove excess adhesive immediately with a natural sponge, frequently rinsed in clear, warm water, and dry with a soft, lint free cloth. After installation, the walls and wallcovering should be monitored for potential moisture or vapour infiltration, which must be promptly eliminated.

MAINTENANCE

Most wallcovering is easily cleaned using clear, warm water and mild soap with a natural sponge. A soft cloth or towel should only be used to tamp dry (do not rub). Stubborn stains can be removed with a laundry spot remover or rubbing alcohol. Do not use solvent-based cleaning agents, lacquer thinners, nail polish remover, pine oil, or cleaning agents containing bleach, which may cause discoloration over time.

Note: The above is intended only as a guideline. Wallcovering installations must conform to current hanging instructions included with each shipment. The installer has final responsibility for proper installation and evaluation of jobsite conditions.



GOODRICH SOLUTIONS WALLCOVERING 402 | EMERALD

WITH GOODRICH,

Your habitat becomes

A gallery of

Your **self-expressions;**

A canvas for

Your **creativity;**

A space for

Your **soul;**

A showcase of

Your **taste for life;**



ECOWALL

Stay Connected - www.goodrichglobal.com | info@goodrichglobal.com

/GoodrichGlobalSingapore

@goodrich_global

/GoodrichGlobal

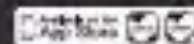
/GoodrichChina

/GoodrichGlobal

+goodrichglobal

/GoodrichHQ

/Goodrich_Global



SINGAPORE (752) | CHINA | HONG KONG | INDIA | INDONESIA | MALAYSIA | MYANMAR | PHILIPPINES | THAILAND | UNITED ARAB EMIRATES | VIETNAM

Copyright © 2018 Goodrich Global. All rights reserved.