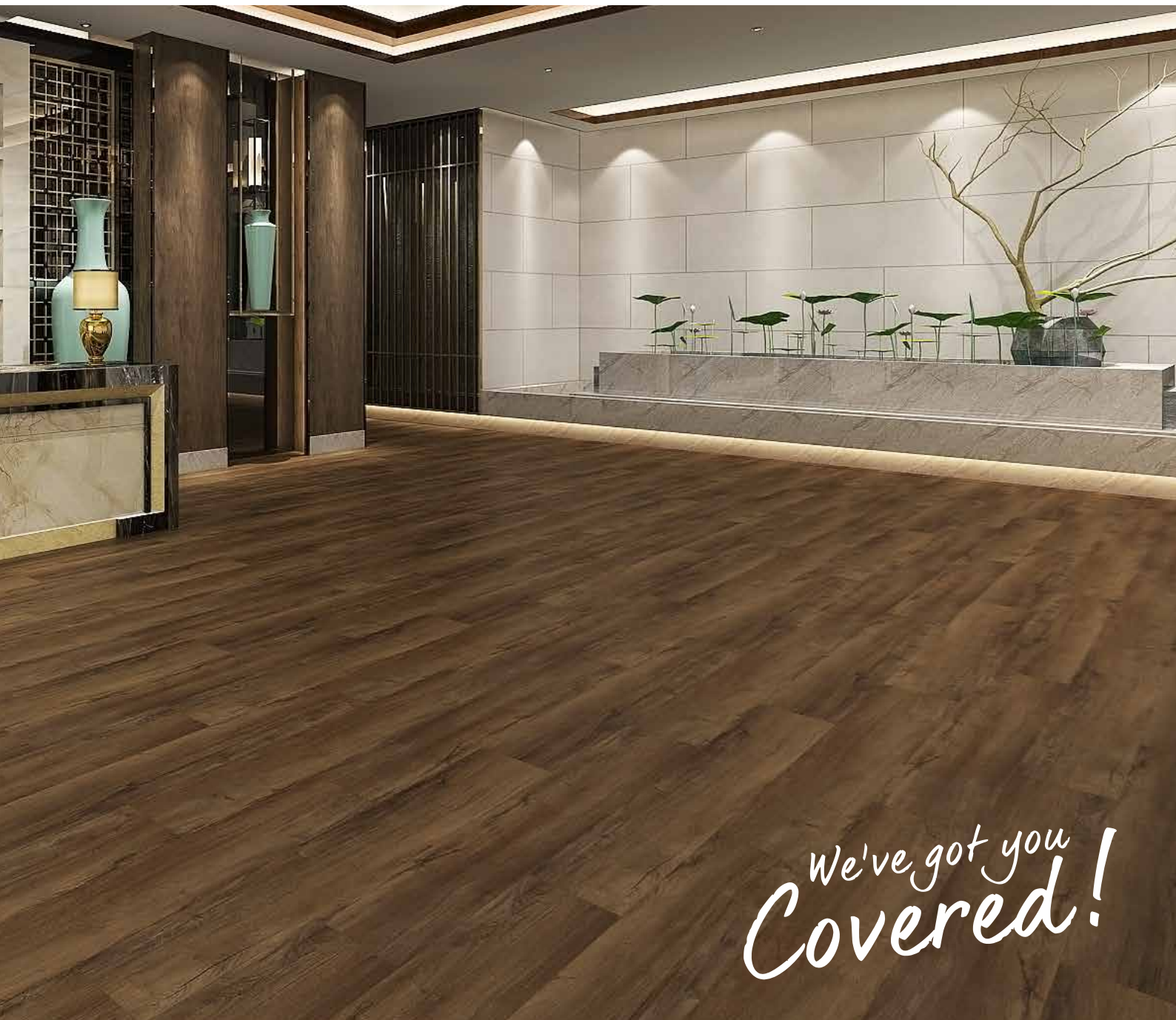


# GOODRICH FLOORING



Goodrich Global  
SINCE 1983

VINYL SHEET | SPC | LVT | ENGINEERED TIMBER | WPC DECKING



*We've got you  
Covered!*

## CATALOGUE

2023

COMMERCIAL | HOSPITALITY | RESIDENTIAL | EDUCATION

# ABOUT GOODRICH

---



Goodrich Global is Asia's leading supplier of wallcoverings, fabrics, carpets and flooring materials.

We are involved in virtually every aspect of the soft furnishing as well as the flooring industry, from production, sourcing, and distributing to marketing, branding and retailing. Our investment in branding creates value in our market developments achieving customer satisfaction.

Goodrich is currently located in Singapore, China, Hong Kong (China), India, Indonesia, Malaysia, Myanmar, Philippines, Thailand, United Arab Emirates & Vietnam.

With the largest service and installation team in the region, we work closely with the design firms and have particular expertise in providing wallcoverings, soft furnishings and flooring products for the following type of facilities.

- Hospitality Industry
- Health Care Facilities
- Commercial and Retail Buildings
- Educational Institutions
- Places of Interest
- Religious Buildings
- Residential Projects

Our Product Range is diverse and creative with an unlimited choice of colours, patterns and textures.

# INDEX

---

|  |    |
|--|----|
| <b>Introduction to Vinyl Sheet</b> .....                   | 1  |
| ■ Medintech Plus .....                                     | 4  |
| Medintone .....  | 8  |
| Starlux .....  | 12 |
| Pastell .....  | 16 |
| <b>Introduction to Stone Polymer Composite (SPC)</b> ..... | 19 |
| ■ GEFF Soliboard .....                                     | 22 |
| GEFF X Plus .....  | 24 |
| <b>Introduction to Luxury Vinyl Tiles (LVT)</b> .....      | 25 |
| ■ Ecoclick .....   | 28 |
| GEFF Ezlay .....   | 32 |
| Loom+ .....  | 34 |
| Orchid+ .....  | 36 |
| Novaclick .....  | 40 |
| ■ <b>Introduction to Engineered Wood Timber</b> .....      | 41 |
| GEFF Engineered Timber .....                               | 44 |
| ■ <b>WPC Decking</b> .....                                 | 45 |
| GEFF Decking .....   | 48 |

# INTRODUCTION VINYL SHEET

---

## What is Vinyl Sheet?

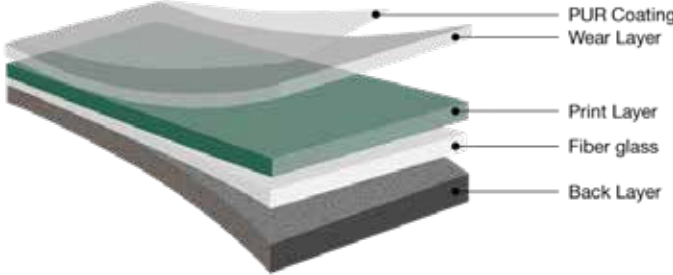
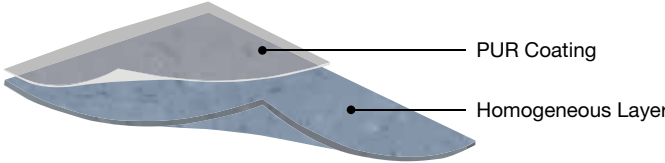
Homogeneous vinyl floor coverings are made of one single layer that offers vibrancy and depth of the colour.

While on the other hand, heterogeneous flooring is a multi-layer flooring which comes in wide range of beautiful patterns with various design possibilities. This feature gives a look of natural flooring materials.

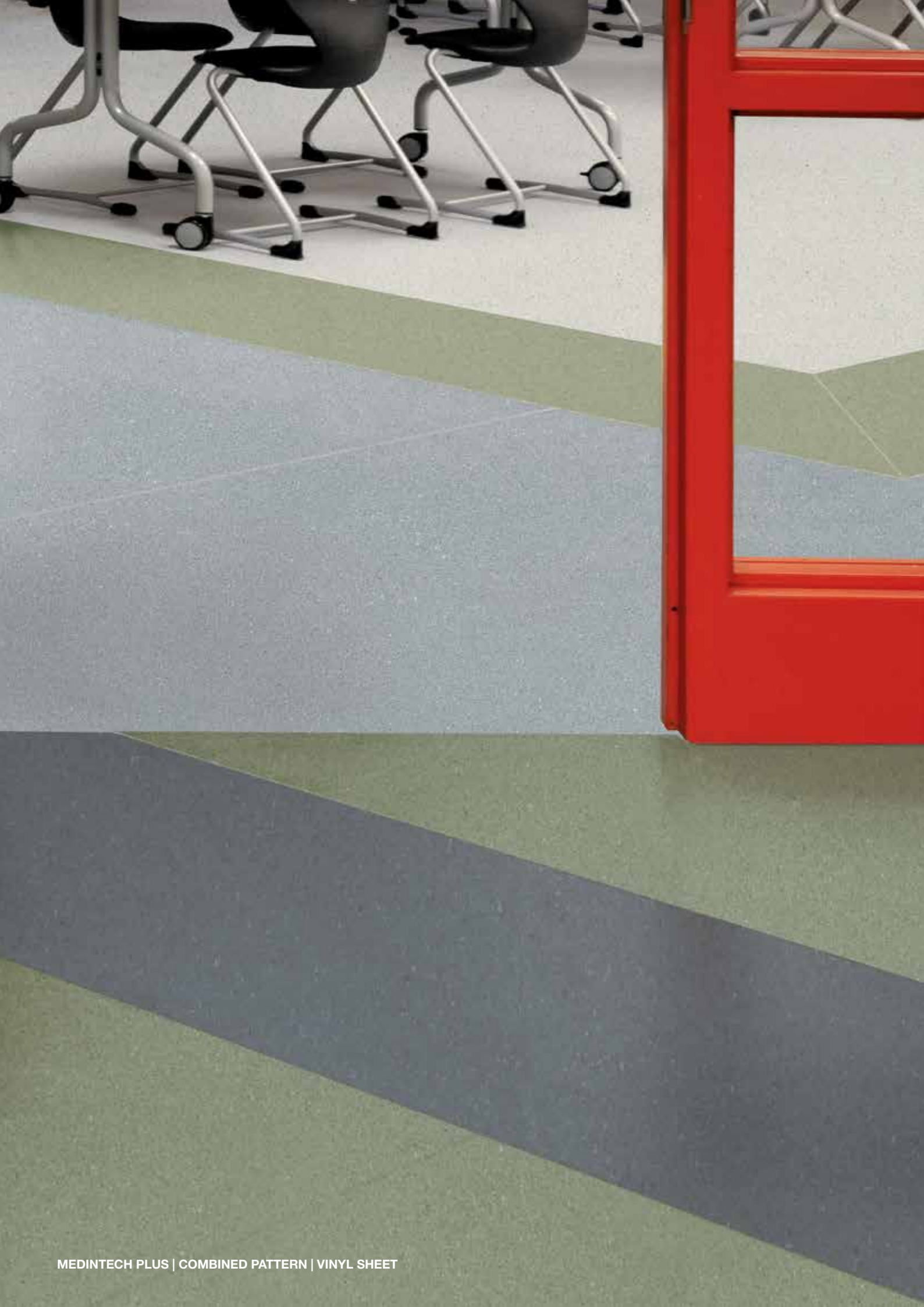
Compared with other flooring materials, both vinyl homogeneous and heterogeneous flooring are affordable solutions and are incredibly stain resistant. These benefits make these two types of vinyl flooring a great choice for heavy traffic areas.

Coated with their latest technology, Diamond10™, Goodrich's vinyl sheet offers a wide range of sheet vinyl flooring that is tough as diamond, easy to clean, more durable and anti-chemical.

Thanks to its sterile and aseptic characteristics, Goodrich's vinyl sheet are designed to excel in medical environments as well as other high-traffic commercial areas where cleanliness, durability, and maintenance are major focuses.





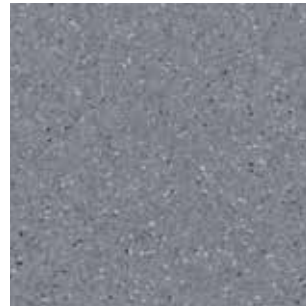




K811-002  
SILVER GREY



K811-003  
SMOKE



K811-004  
ROCK



K811-211  
OATMEAL



K811-212  
CARTHAMUS CHAMPAGNE



K811-214  
LIGHT BEIGE



K811-331  
BANANA



K811-435  
ROUGE



K811-524  
MOSS



K811-533  
TURQUOISE

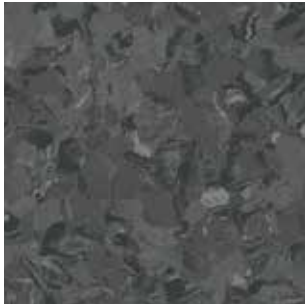
## TECHNICAL SPECIFICATIONS

### COATING

|                              |                 |        |  |
|------------------------------|-----------------|--------|--|
| CLASSIFICATION               | EN 685          | CLASS  | DIAMOND 10<br>COMMERCIAL: 34<br>INDUSTRIAL: 43 |
| ROLL WIDTH                   | EN 426          | M      | 2  |
| ROLL LENGTH                  | EN 426          | M      | 13-20  |
| OVERALL THICKNESS            | EN 428          | MM     | 2  |
| DIMENSIONAL STABILITY        | EN 434          |        | X: <0.4%; Y: <0.4%                             |
| FIRE RESISTANCE/FLAMMABILITY | EN13501-1       | CLASS  | Bfl-s1   |
| SLIP RESISTANCE              | DIN 51130       | GROUP  | R9   |
| TVOC EMISSIONS               | ISO 16000-6     |        | ≤ 5 ug/m3 after 28 days                        |
| RESIDUAL INDENTATION         | EN 433          | MM     | ≤ 0.03   |
| WEAR RESISTANCE              | EN 660-2        | GROUP  | T  |
| COLOR FASTNESS               | ISO 105-B02     | RATING | ≥ 6  |
| STATIC ELECTRICAL PROPENSITY | EN 1815         | KV     | ≤ 2.0  |
| STAIN RESISTANCE             | EN 423          |        | GOOD RESISTANCE                                |
| BACTERIA RESISTANCE          | ISO 846: PART C |        | NO OBSERVED GROWTH                             |



K811A-001  
IXIA



K811A-005  
CLOUD



K811A-006  
FREESIA PEARL



K811A-107  
DESERT GOLD



K811A-108  
PUMICE STONE



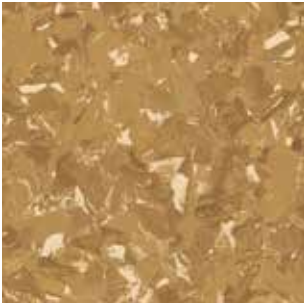
K811A-109  
PURPLE ORE



K811A-210  
ALMOND



K811A-213  
GOLDEN GLOW



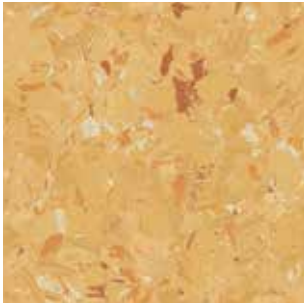
K811A-215  
SANDALWOOD



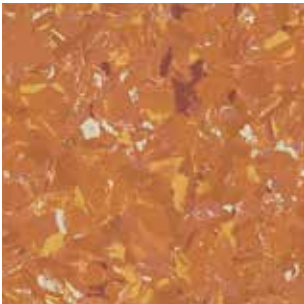
K811A-216  
LEMON



K811A-316  
CREAM



K811A-317  
ORANGE



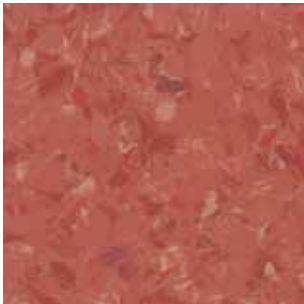
K811A-318  
ORANGE ZEST



K811A-419  
PEARL

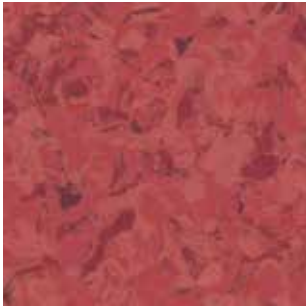


K811A-420  
CINNAMON



K811A-421  
CORAL





K811A-422  
MONARCH RED



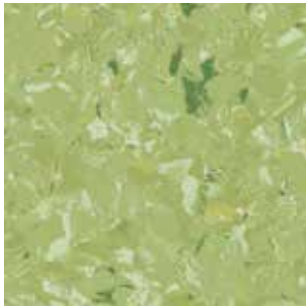
K811A-523  
LIGHT GREEN



K811A-525  
MIST GREEN



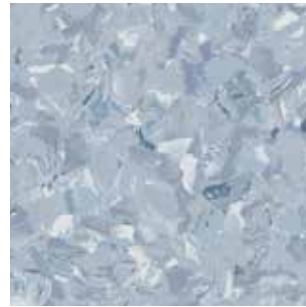
K811A-526  
FOREST



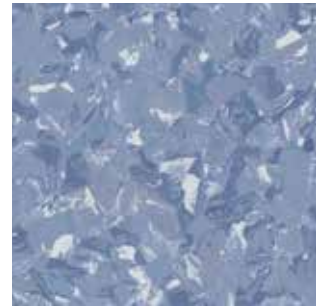
K811A-532  
PEAK GREEN



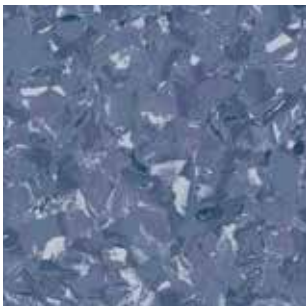
K811A-627  
DAHLIA SKY



K811A-628  
WATER BLUE



K811A-629  
BLUE SKIES

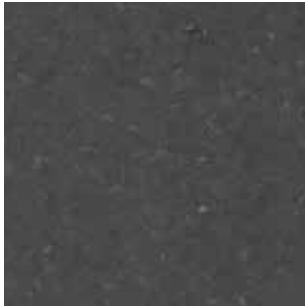


K811A-630  
ULTRA BLUE



K811A-734  
WISTERIA

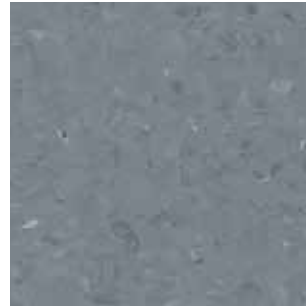




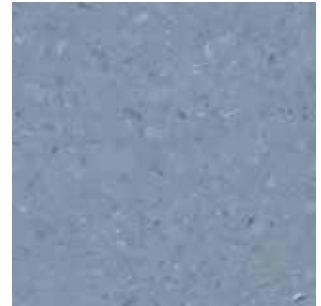
FPH5301271  
GRAY LIGHT



FPH5303271  
ALMOST BLACK



FPH5329271  
GRAYED BLUE MID



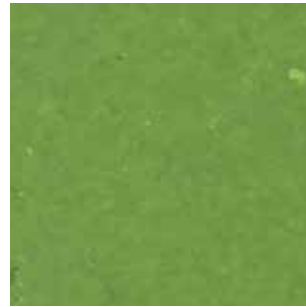
FPH5350271  
INDIGO MID



FPH5351271  
INDIGO



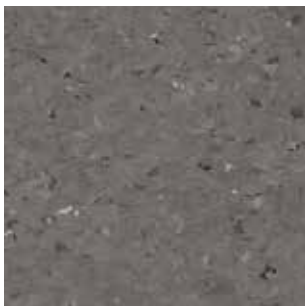
FPH5406271  
OCEAN BLUE



FPH5408271  
LIME GRASS



FPH5420271  
LITTLE BLACK BOOK



FPH5421271  
HAZEL



FPH5423271  
GOLDEN SUN



FPH5424271  
ZAFFRON



FPH5431271  
MOSAIC BLUE

## TECHNICAL SPECIFICATIONS

### COATING

CLASSIFICATION

ISO 10874-EN 685

CLASS

DIAMOND 10

COMMERCIAL: 34

INDUSTRIAL: 43

ROLL WIDTH

ISO 10581-EN 426

M

2

ROLL LENGTH

ISO 10581-EN 426

M

17-23

OVERALL THICKNESS

ISO 10581-EN 428

MM

2

DIMENSIONAL STABILITY

ISO 23999-EN 434

X: <0.4%; Y: <0.4%

FIRE RESISTANCE/FLAMMABILITY

EN13501-1

CLASS

Bfl-s1

SLIP RESISTANCE

DIN 51130

GROUP

R9

TVOC EMISSIONS

ISO 16000-6

≤ 5 ug/m<sup>3</sup> after 28 days

RESIDUAL INDENTATION

ISO 24343-1-EN 433

MM

≤ 0.03

WEAR RESISTANCE

EN 660-2

GROUP

T

COLOR FASTNESS

ISO 105-B02

RATING

≥ 6

STATIC ELECTRICAL PROPENSITY

EN 1815

KV

≤ 2.0

STAIN RESISTANCE

EN 423

GOOD RESISTANCE

BACTERIA RESISTANCE

ISO 846: PART C

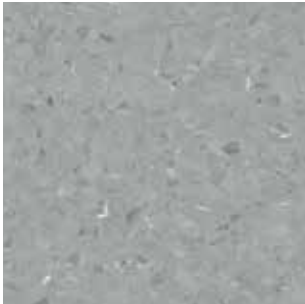
NO OBSERVED GROWTH



FPH5300271  
COOL WHITE



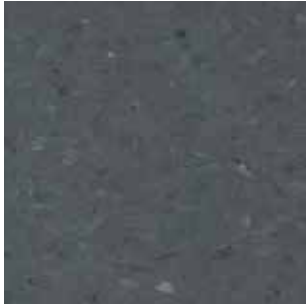
FPH5302271  
DEEP GRAY



FPH5304271  
NATURAL GRAY LIGHT



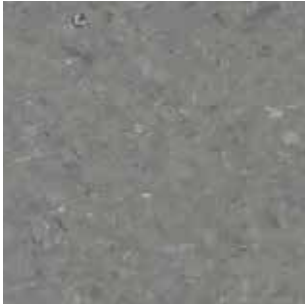
FPH5305271  
NATURAL GRAY



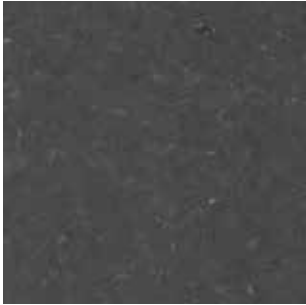
FPH5306271  
NATURAL GRAY DARK



FPH5307271  
ROCK DUST LIGHT



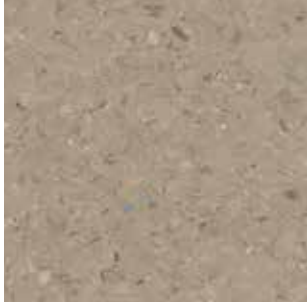
FPH5308271  
ROCK DUST MID



FPH5310271  
ROCK BROWN



FPH5311271  
NATURAL WHITE



FPH5312271  
NATURAL



FPH5313271  
NATURAL TONE



FPH5315271  
LIGHT CHOCOLATE



FPH5316271  
POWDER CHOCOLATE



FPH5317271  
MILK CHOCOLATE



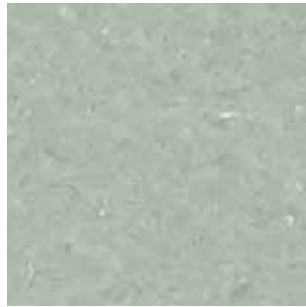
FPH5319271  
SAND LIGHT



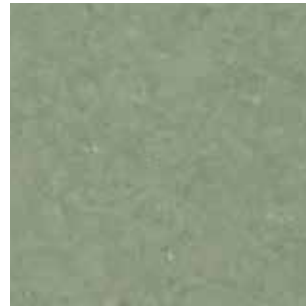
FPH5320271  
SAND MID



FPH5328271  
GRAYED BLUE LIGHT



FPH5358271  
SOFT GREEN LIGHT



FPH5362271  
REFRESH GREEN MID



FPH5402271  
ALL FIRED UP



FPH5403271  
BROWN UMBER



FPH5422271  
WALNUT



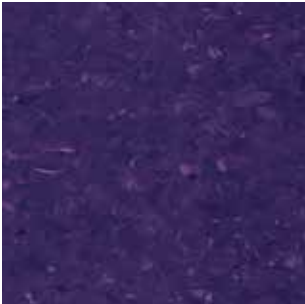
FPH5426271  
FLAMINGO



FPH5425271  
TANGERINE



FPH5427271  
PERFECTLY PLUM



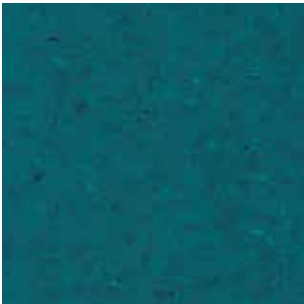
FPH5428271  
HYDRANGEA



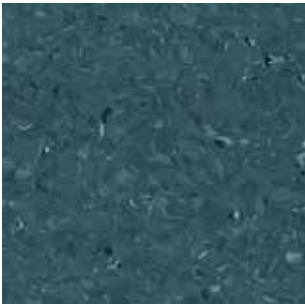
FPH5429271  
ORCHID MIST



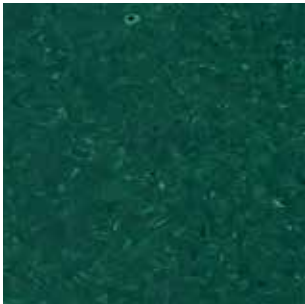
FPH5432271  
REGATTA



FPH5433271  
BLUE LAGOON



FPH5434271  
MAZARINE BLUE



FPH5435271  
PROMISE GREEN



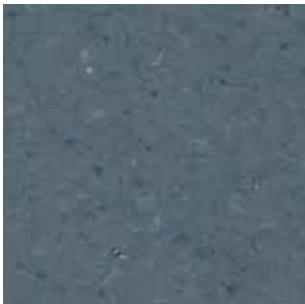
FPH5436271  
MAIZE YELLOW



FPH5437271  
GOLD LEAF

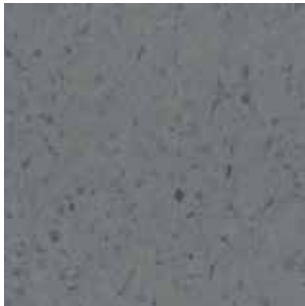


FPH5438271  
LIGHT AUBERGINE



FPH5532271  
GRAYED BLUE





K825A-012  
BLACKSTAR



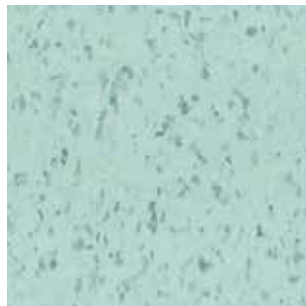
K825A-034  
SESAME



K825A-121  
FOG BROWN



K825A-208  
MARBLING



K825A-506  
NEPTUNE



K825A-609  
COAST BLUE

## TECHNICAL SPECIFICATIONS

| COATING                      |                 | DIAMOND 10 |                                  |
|------------------------------|-----------------|------------|----------------------------------|
| CLASSIFICATION               | EN 685          | CLASS      | COMMERCIAL: 34<br>INDUSTRIAL: 43 |
| ROLL WIDTH                   | EN 426          | M          | 2                                |
| ROLL LENGTH                  | EN 426          | M          | 13-20                            |
| OVERALL THICKNESS            | EN 428          | MM         | 2                                |
| DIMENSIONAL STABILITY        | EN 434          |            | X: <0.4%; Y: <0.4%               |
| FIRE RESISTANCE/FLAMMABILITY | EN13501-1       | CLASS      | Bfl-s1                           |
| SLIP RESISTANCE              | DIN 51130       | GROUP      | R9                               |
| TVOC EMISSIONS               | ISO 16000-6     |            | ≤ 5 ug/m3 after 28 days          |
| RESIDUAL INDENTATION         | EN 433          | MM         | ≤ 0.03                           |
| WEAR RESISTANCE              | EN 660-2        | GROUP      | T                                |
| COLOR FASTNESS               | ISO 105-B02     | RATING     | ≥ 6                              |
| STATIC ELECTRICAL PROPENSITY | EN 1815         | KV         | ≤ 2.0                            |
| STAIN RESISTANCE             | EN 423          |            | GOOD RESISTANCE                  |
| BACTERIA RESISTANCE          | ISO 846: PART C |            | NO OBSERVED GROWTH               |





K825A-011  
PLUTO



K825A-035  
MIDNIGHT



K825A-104  
APRICOT



K825A-122  
STARMOND



K825A-237  
MONTAIGNE



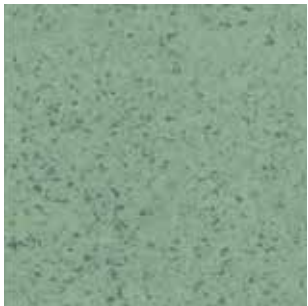
K825A-325  
PLUME YELLOW



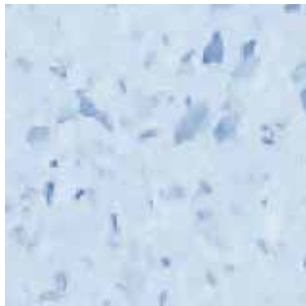
K825A-336  
GINGER GOLD



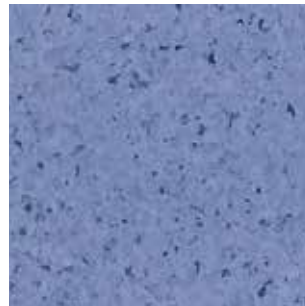
K825A-414  
APOLLO



K825A-515  
GROVE GREEN



K825A-613  
SKYMAN



K825A-623  
NAVY BLUE



K825A-632  
PERSIA BLUE

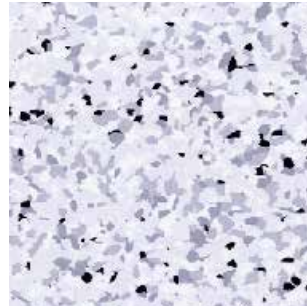


K825A-733  
HYDRANGEA

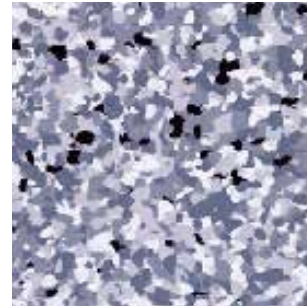




2316-001  
WHITE STONE



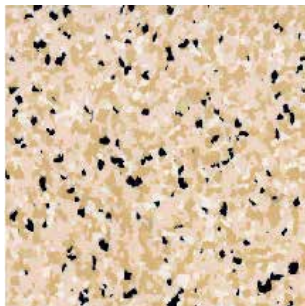
2316-002  
LIGHT GREY



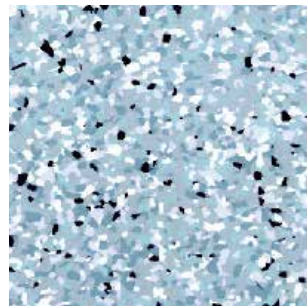
2316-003  
TERRE GREY



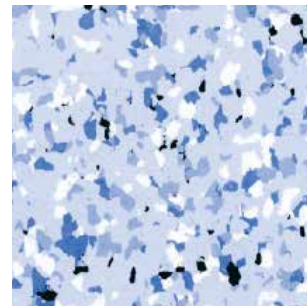
2316-201  
VINTAGE CREAM



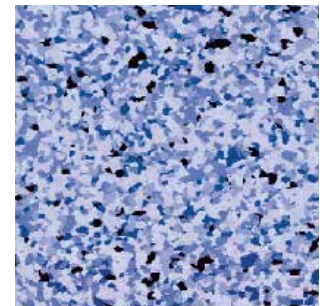
2316-301  
PEACE YELLOW



2316-501  
LIGHT GREEN



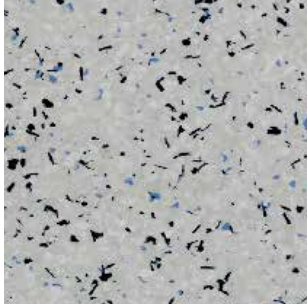
2316-601  
AQUA BLUE



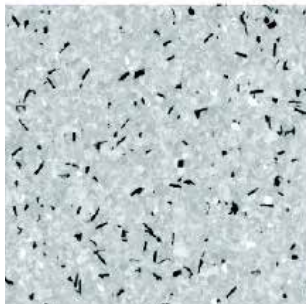
2316-602  
FLAKE BLUE

## TECHNICAL SPECIFICATIONS

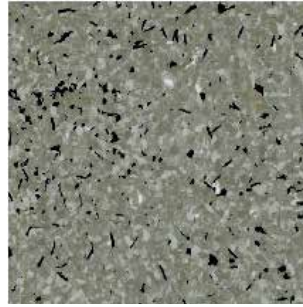
|                              |                       |                    |  |
|------------------------------|-----------------------|--------------------|--|
| TYPE OF FLOORING             | EN 649 / EN ISO 10581 |                    | VINYL SYNTHETIC FLOORCOVERING<br>WITH CONDUCTIVE BACKING |
| COATING                      |                       |                    | DIAMOND 10   |
| CLASSIFICATION               | ISO 10874-EN 685      | CLASS              | DOMESTIC: 23<br>COMMERCIAL: 34<br>INDUSTRIAL: 43         |
| ROLL WIDTH                   | ISO 10581-EN 426      | M                  | 2  |
| ROLL LENGTH                  | ISO 10581-EN 426      | M                  | 16-20  |
| OVERALL THICKNESS            | ISO 10581-EN 428      | MM                 | 2  |
| STATIC ELECTRICAL CHARGE     | EN 1815               | KV                 | ≤ 2.0  |
| THERMAL RESISTANCE           | EN 12667              | m <sup>2</sup> k/w | 0.04   |
| FIRE RESISTANCE/FLAMMABILITY | EN13501-1             | CLASS              | Bfl-s1   |
| SLIP RESISTANCE              | DIN 51130             | GROUP              | R9   |
| RESIDUAL INDENTATION         | ISO 24343-1-EN 433    | MM                 | ≤ 0.05   |
| WEAR RESISTANCE              | EN 660-2              | GROUP              | P  |
| COLOR FASTNESS               | ISO 105-B02           | RATING             | ≥ 6  |
| STATIC ELECTRICAL PROPENSITY | EN 1815               | KV                 | ≤ 2.0  |
| STAIN RESISTANCE             | EN 423                |                    | GOOD RESISTANCE  |
| BACTERIA RESISTANCE          | ISO 846: PART C       |                    | NO OBSERVED GROWTH                                       |



1316-011  
SNOW GREY



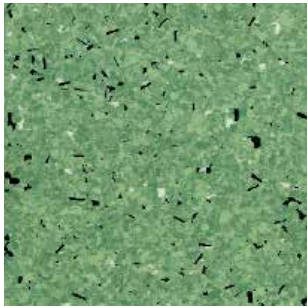
1316-012  
VINTAGE SILVER



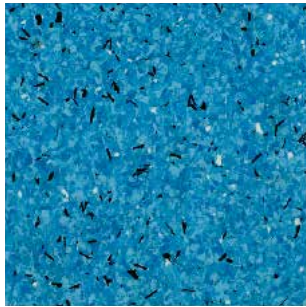
1316-013  
FLAKE STONE



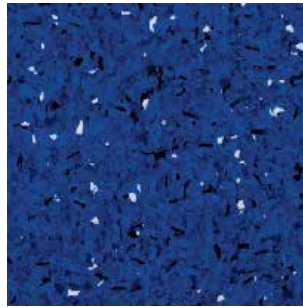
1316-311  
WHALE CREAM



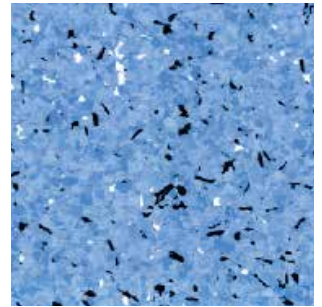
1316-511  
LIGHT JADE



1316-605  
AQUA STAR



1316-610  
SKI BLUE



1316-611  
SKY WALK



1815-2815-021  
LIGHT BLUE



1815-2815-050  
BROKEN SILVER

# INTRODUCTION STONE POLYMER COMPOSITE

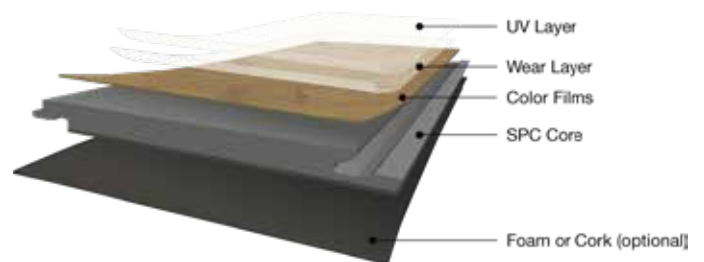
---

## What is Stone Polymer Composite?

SPC (Stone Polymer Composite) is the floor for universal application.

It has a rigid core board that perfectly evens out bumps and dented areas in the substrate. Renovation works on tiles can give the living space a new and completely fresh look with little effort.

Stone polymer composite floorings are the ideal choice for demanding or challenging room situations such as large rooms, floor-to-ceiling windows and conservatories. It also lends a special atmosphere to damp rooms.







A = 1  
L W = 2  
A Y S = 3  
L O O K = 4  
O N T H E = 5  
B R I G H T = 6  
S A F E T Y = 7  
S T A B I L I T Y = 8  
C O M F O R T = 9  
D U R A B I L I T Y = 10  
E C O F R I E N D L Y = 11





GSB-001 LATTE OAK



GSB-002 FROSTY OAK



GSB-003 ASH OAK



GSB-004 WINTER CHESTNUT



GSB-005 ANTIQUE OAK



GSB-006 CLASSIC TEAK



GSB-007  
COLD CEMENT



GSB-008  
GREY ANTHRACITE

## TECHNICAL SPECIFICATIONS

|                              |                      |                |  |
|------------------------------|----------------------|----------------|--|
| SIZE                         |                      | MM             | 225 x 1219.2 (Wood)<br>304.8 x 609.6 (Stone) |
| OVERALL THICKNESS            | EN ISO 24346         | MM             | 6.5  |
| PACKAGING DETAIL             |                      | M <sup>2</sup> | 1.92 (Wood)<br>2.044 (Stone)                 |
| DIMENSIONAL STABILITY        | ISO 23999            |                | ≤ 0.25%                                      |
| FIRE RESISTANCE/FLAMMABILITY | EN 13501-1           | CLASS          | Bfl-s1                                       |
| SLIP RESISTANCE              | EN 13893 / DIN 51130 |                | DS / >R9                                     |
| RESIDUAL INDENTATION         | ISO 24343-1          | MM             | ≤ 0.1  |
| CHEMICAL RESISTANCE          | ISO 26987            | RATING         | GOOD   |





MV001 WINTER OAK



MV002 WHITE CHESTNUT



MV003 GREY GULL



MV004 WASHED OAK



MV006 BENCHWOOD BROWN



MV007 SMOKED OAK



MV013 HEARTY CABIN



MV017 MOUNTAIN GREY



MV018 EMPIRE OAK



MV009  
DUSKY ANTHRACITE



MV010  
TWILIGHT STONE

## TECHNICAL SPECIFICATIONS

|                              |                 |        |  |
|------------------------------|-----------------|--------|--|
| SIZE                         |                 | MM     | 228 x 1220 (Plank)<br>350 x 610 (Stone)  |
| OVERALL THICKNESS            |                 |        | 6.5mm (5mm SPC Core + 1.5mm IXPE)  |
| THICKNESS OF WEAR LAYER      | ISO 24340       | MM     | 0.5  |
| PACKAGING DETAIL             |                 |        | Plank<br>8 pieces / carton<br>2.225 sqm / carton<br>Stone<br>10 pieces / carton<br>1.86 sqm / carton |
| DIMENSIONAL STABILITY        | ISO 23999       |        | ≤ 0.25%  |
| FIRE RESISTANCE/FLAMMABILITY | EN 13501        | CLASS  | Bfl-s1   |
| SLIP RESISTANCE              | DIN 51130       |        | R10  |
| RESIDUAL INDENTATION         | EN 433          | MM     | ≤ 0.40   |
| COLORFASTNESS                | ISO105-B02 blue | RATING | ≥6   |
| CHEMICAL RESISTANCE          | EN 423          |        | PASSED   |

# INTRODUCTION LUXURY VINYL TILES

---

## What is Luxury Vinyl Tiles?

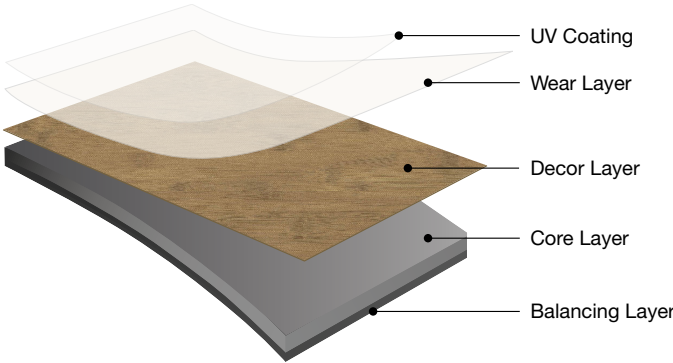
As a modern and innovative material, Luxury Vinyl Tiles (LVT) is the first choice for aesthetic and functional high-quality room concepts.

Luxury Vinyl Tiles shines in both private and commercial contexts when it comes to maximum durability. With LVT, the authentic reproduction of near-natural materials succeeds in astonishing perfection.

Goodrich's LVT offers an optimal solution for every usage scenario and enables uniformity across the various vinyl products - whether as installed floating or glue-down.

Combining strength, performance, luxury and style, the latest LVT are here to provide a floor covering with lasting beauty at affordable prices.

Ranging from beautiful hardwood to attractive mineral designs, every plank is designed to bring the freshness of nature indoors, for a year-round natural effect. Each and every plank is unique and aims to cater to every design need.









GD-31219 HICKORY | GOLDEN



GD-5120 EUROPEAN OAK | GOLDEN



GD-40405 ANTIQUE OAK | BROWN



GD-5121 EUROPEAN OAK | BROWN



GD-45405 CENTURY OAK | GREY



GD-6310 GRAND OAK | WHITE



GD-42502 CONCRETE | DARK GREY



GD-42504 CONCRETE | BLACK

## TECHNICAL SPECIFICATIONS

|                              |                    |       |   |
|------------------------------|--------------------|-------|---|
| SURFACE TREATMENT            | ISO 22196          |       | NOX EPT   |
| CLASSIFICATION               | EN 685             | CLASS | DOMESTIC: 23<br>COMMERCIAL: 33<br>INDUSTRIAL: 42  |
| SIZE                         |                    | MM    | 185 x 1212 (Plank)<br>462 x 925 (Tile)  |
| OVERALL THICKNESS            |                    | MM    | 5   |
| THICKNESS OF WEAR LAYER      | ISO 24340          | MM    | 0.3   |
| PACKAGING DETAIL             |                    |       | Plank<br>8 pieces / carton<br>1.79 sqm / carton<br>Tile<br>6 pieces / carton<br>2.56 sqm / carton |
| DIMENSIONAL STABILITY        | ISO 23999 / EN 434 |       | ≤0.10% (norm: ≤0.25%)   |
| FIRE RESISTANCE/FLAMMABILITY | EN13501-1          | CLASS | Bfl-s1  |
| SLIP RESISTANCE              | DIN 51130          |       | R10   |
| RESIDUAL INDENTATION         | EN 433             |       | ≤ 0.1mm   |
| WEAR RESISTANCE              | EN 660-2           | GROUP | T   |
| CHEMICAL RESISTANCE          | ISO 26987          |       | NO DEFECTS  |







NCG-6311 GRAND OAK | BLACK



NCP-40418 ANTIQUE OAK | BEIGE



NCP-6430 HICKORY | BROWN



NCP-23365 EUROPEAN OAK | BROWN GREY



NCG-40108 ANTIQUE OAK | DARK BROWN



NCP-45403 CENTURY OAK | DARK BROWN



NCI-3001  
PROTO CONCRETE | WHITE



NCI-3002  
PROTO CONCRETE | GREY



NCG-40115 ANTIQUE OAK | GOLDEN



NCP-5122 EUROPEAN OAK | GOLDEN



NCP-6431 HICKORY | BROWN



NCP-31217 HICKORY | GREY



NCP-40428 ANTIQUE OAK | GREY



NCP-45404 CENTURY OAK | NATURAL



NCI-26057  
STONE | LIGHT GREY



NCI-26067  
STONE | GREY



... can be Cheondoong  
... course,  
it can be trivial.

## WOOD



GEL-001 LATTE OAK



GEL-002 FROSTY OAK



GEL-003 ASH OAK

## MARBLE



GEL-004 GRAND MARBLE

## WOVEN VINYL



GEL-005 GREY KNIT



GEL-006 COAST KNIT



GEL-007 NEPTUNE KNIT

## CARPET



GEL-008 SILVER KHAKI



GEL-009 GREY FOSSIL

### TECHNICAL SPECIFICATIONS

|                              |                      |       |   |
|------------------------------|----------------------|-------|---|
| SIZE                         |                      | MM    | 1219.2 X 228.6 (Wood)                     |
|                              |                      | MM    | 304.8 X 609.6 (Marble)                    |
|                              |                      | MM    | 457.2 X 457.2 (Carpet / Woven Vinyl)      |
| OVERALL THICKNESS            | EN ISO 24346         | MM    | 5   |
| PACKAGING DETAIL             |                      |       | 2.23 sqm / carton (Wood / Marble)         |
|                              |                      |       | 1.881 sqm / carton (Carpet / Woven Vinyl) |
| DIMENSIONAL STABILITY        | ISO 23999            |       | ≤ 0.25%                                   |
| FIRE RESISTANCE/FLAMMABILITY | EN 13501-1           | CLASS | Bff-s1                                    |
| SLIP RESISTANCE              | EN 13893 / DIN 51130 |       | DS / >R9                                  |
| CHEMICAL RESISTANCE          | ISO 26987            |       | GOOD                                      |





FQ2401



FQ2402



FQ2403



FQ2502



FQ2505



FQ2506



FQ2601



FQ2603



FQ2604



FQ2605

## TECHNICAL SPECIFICATIONS

|                              |                   |       |                        |
|------------------------------|-------------------|-------|------------------------|
| SIZE                         |                   | MM    | 500 X 500              |
| OVERALL THICKNESS            |                   | MM    | 3                      |
|                              |                   |       | 250 X 1000             |
| PACKAGING DETAIL             |                   | MM    | 16 pieces / carton     |
|                              |                   |       | 4 sqm / carton         |
| CLASSIFICATION               | EN685             | CLASS | COMMERCIAL:33          |
| DIMENSIONAL STABILITY        | ISO 23999 / EN986 |       | ≤ 0.10% (Norm: ≤0.25%) |
| FIRE RESISTANCE/FLAMMABILITY | EN 13501-1        | CLASS | Bfl-s1                 |
| SLIP RESISTANCE              | DIN 51130         |       | R11                    |
| RESIDUAL INDENTATION         | ISO 24343-1       |       | ≤ 0.1mm                |
| CHEMICAL RESISTANCE          | ISO26987          |       | NO DEFECTS             |
| IMPACT SOUND INSULATION      | ISO10140-3        | dB    | 9                      |





GD-22015 NATURAL OAK | RED BROWN



GD-4702 NATURAL OAK | HONEY



GD-44601 SERPEGGIANTE | DARK GREY



GD-23353 NATURAL OAK | GOLDEN



GD-40607 WASHY OAK | BEIGE



GD-44502 NATURAL OAK | GOLDEN



GD-23366 EUROPEAN OAK | BROWN



GD-44603 SERPEGGIANTE | GREY



GD-5125 WASHY OAK | SAND GREY

## TECHNICAL SPECIFICATIONS

|                              |                       |       |   |
|------------------------------|-----------------------|-------|---|
| CLASSIFICATION               | EN 685                | CLASS | DOMESTIC: 23<br>COMMERCIAL: 33                        |
| SIZE                         |                       | MM    | 186 x 940 (Wood Plank)                                |
| OVERALL THICKNESS            |                       | MM    | 2.5   |
| THICKNESS OF WEAR LAYER      |                       | MM    | 0.3   |
| PACKAGING DETAIL             |                       |       | Wood Plank<br>19 pieces / carton<br>3.32 sqm / carton |
| DIMENSIONAL STABILITY        | ISO 23999             |       | ≤0.10% (norm: ≤0.25%)                                 |
| FIRE RESISTANCE/FLAMMABILITY | EN 13501              | CLASS | Bfl-s1  |
| SLIP RESISTANCE              | EN 10581 / DIN 51130  |       | DS / R10  |
| RESIDUAL INDENTATION         | EN 433 / ASTM F1914   |       | ≤ 0.1mm / <8%   |
| WEAR RESISTANCE              | EN 660-2              | GROUP | T   |
| CHEMICAL RESISTANCE          | ISO 26987 / ASTM F925 |       | NO DEFECTS  |







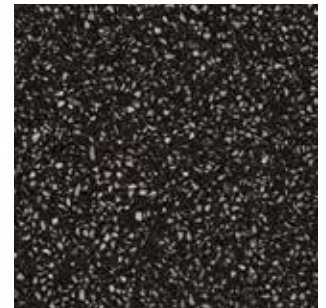
GD-20509  
GRID | WHITE



GD-1760  
GRID | GREY



GD-44701  
TERRAZZO | WHITE



GD-44707  
TERRAZZO | BLACK



GD-1810  
NATURAL MARBLE | GREY



GD-45803  
DESERT | DARK GREY



GD-34138  
SERPEGGIANTE | GREY



GD-34135  
SERPEGGIANTE | DARK GREY

## TECHNICAL SPECIFICATIONS

|                              |                       |       |  |
|------------------------------|-----------------------|-------|--|
| CLASSIFICATION               | EN 685                | CLASS | DOMESTIC: 23<br>COMMERCIAL: 33   |
| SIZE                         |                       | MM    | 457.2 x 457.2 (Woven)<br>600 x 600 (Terrazzo)<br>457.2 x 914.4 (Minerals)  |
| OVERALL THICKNESS            |                       | MM    | 2.5  |
| THICKNESS OF WEAR LAYER      |                       | MM    | 0.3  |
| PACKAGING DETAIL             |                       |       | Woven<br>16 pieces / carton<br>3.34 sqm / carton<br>Terrazzo<br>12 pieces / carton<br>4.32 sqm / carton<br>Minerals<br>10 pieces / carton<br>4.18 sqm / carton |
| DIMENSIONAL STABILITY        | ISO 23999             |       | ≤0.10% (norm: ≤0.25%)  |
| FIRE RESISTANCE/FLAMMABILITY | EN 13501              | CLASS | Bfl-s1   |
| SLIP RESISTANCE              | EN 10581 / DIN 51130  |       | DS / R10   |
| RESIDUAL INDENTATION         | EN 433 / ASTM F1914   |       | ≤ 0.1mm / <8%  |
| WEAR RESISTANCE              | EN 660-2              | GROUP | T  |
| CHEMICAL RESISTANCE          | ISO 26987 / ASTM F925 |       | NO DEFECTS   |





GNV-001 IVORY OAK



GNV-003 ASH OAK



GNV-005 VINTAGE OAK



GNV-007 FRENCH MAPLE



GNV-009 PARISH OAK



GNV-011 EUROPEAN OAK



GNV-013 PEWTER OAK



GNV-002 SILVER OAK



GNV-004 AMERICAN CHESTNUT



GNV-006 ARTISAN PARQUET



GNV-008 PREMIER OAK



GNV-010 WEATHERED TIMBERLAND



GNV-012 CLASSIC WALNUT

## TECHNICAL SPECIFICATIONS

|                              |                      |       |                    |
|------------------------------|----------------------|-------|--------------------|
| SIZE                         |                      | MM    | 1219.2 X 177.8     |
| OVERALL THICKNESS            | EN ISO 24346         | MM    | 5                  |
| THICKNESS OF WEAR LAYER      |                      | MM    | 0.3                |
| PACKAGING DETAIL             |                      |       | 2.168 sqm / carton |
| DIMENSIONAL STABILITY        | ISO 23999            |       | ≤ 0.25%            |
| FIRE RESISTANCE/FLAMMABILITY | EN 13501-1           | CLASS | Bff-s1             |
| SLIP RESISTANCE              | EN 13893 / DIN 51130 |       | DS / R10           |
| CHEMICAL RESISTANCE          | ISO 26987            |       | GOOD               |

# INTRODUCTION ENGINEERED WOOD TIMBER

---

## What is Engineered Wood Timber?

Engineered wood flooring is the classic among floor-coverings – being both timeless and modern, its material quality represents a natural and pleasant living experience. The wide variety of designs and formats allow for personalised floor design.

Goodrich engineered wood flooring is highly durable, creates a positive indoor climate, is warm underfoot and has considerable charisma.

Wood floors have been widely recognized to have the ability to transform rooms, creating a welcoming and natural feel that complements all decors and furnishings.

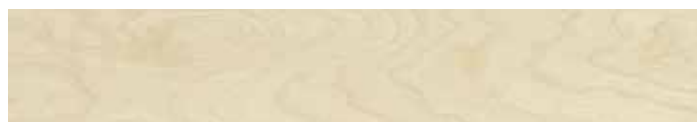
Designed to be dimensionally more stable than solid wood, engineered wood floors are uniformly prefinished with UV coatings to ensure perfect room complexion upon installation.

Our collection covers a wide variety of wood species that suit every taste, ranging from modern to classic.









BIRCH



CORAL OAK



NATURAL OAK



SILVER FOX



TEAK



WALNUT

## TECHNICAL SPECIFICATIONS

|   |            |   |
|---|------------|---|
| TYPE  |            | 3 LAYER ENGINEERED WOOD FLOORING                |
| SIZE  | MM         | 165 x 1200                                      |
| OVERALL THICKNESS                               | MM         | 12  |
| THICKNESS OF TOP LAYER                          | MM         | 2.2   |
| PACKAGING DETAIL                                |            | 6 pieces / carton<br>1.728 - 2.376 sqm / carton |
| PROFILE   |            | CLICK CONNECTION                                |
| MOISTURE CONTENT                                |            | 7% + 1%   |
| FIRE RESISTANCE                                 | EN 13501-1 | DIIS1   |
| FORMALDEHYDE EMISSION                           | EN 717-1   | CLASS E1  |
| ADMISSIBLE DIFFERENCE IN LENGTH ( $\pm 0.1$ %)  | EN 13489   | $\pm 0.05$ %                                    |
| ADMISSIBLE DIFFERENCE IN WIDTH ( $\pm 0.2$ mm)  | EN 13489   | $\pm 0.1$ mm                                    |
| HEIGHT DIFFERENCES OF ELEMENTS ( $\leq 0.2$ mm) | EN 13489   | $\leq 0.2$ mm                                   |

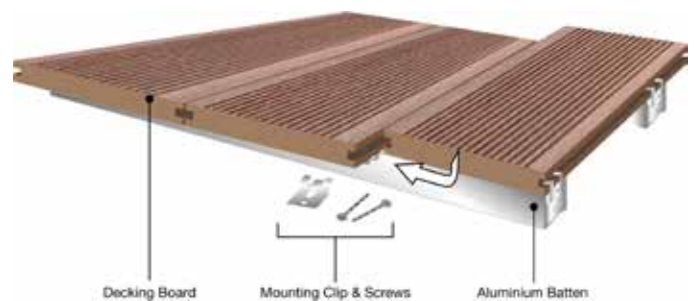
# INTRODUCTION WPC DECKING

---

## What is WPC Decking?

WPC decking is Wood Polymer Composite Outdoor Decking. The unique composition of wood and polymer provides high resistance to rotting, insect attacks and decay due to the presence of high levels of moisture.

Compared to regular wood decking, WPC decking is highly resistant to UV rays, therefore extending the resistance of decking color.











NT205

CARBON WALNUT



NT102

DARK EBONY



NT500

HONEY TEAK



NT105

SILVER GREY

## TECHNICAL SPECIFICATIONS

|                         |       |  |
|-------------------------|-------|--|
| TYPE                    |       | 4 LAYER ENGINEERED WOOD FLOORING                           |
| SIZE                    | MM    | 1200 X 120 / 1200 X 125 / 1200 X 127 / 1200 X 165          |
| OVERALL THICKNESS       | MM    | 12   |
| THICKNESS OF WEAR LAYER | COATS | 6  |
| PACKAGING DETAIL        |       | 12 pcs / carton  |
|                         |       | 1.728 sqm / carton / 1.8 sqm / carton / 2.376 sqm / carton |

# GOODRICH Headquarters

## SINGAPORE (GLOBAL HQ)

GOODRICH GLOBAL PTE LTD  
Goodrich Building,  
8 Changi South Lane #05-01, Singapore 486113  
T: (+65) 6787 8787 | F: (+65) 6788 8794  
E: info@goodrichglobal.com

GOODRICH GALLERY SINGAPORE  
Goodrich Building,  
8 Changi South Lane #01-01, Singapore 486113  
T: (+65) 6788 6868 | F: (65) 6586 8794  
E: gallery@goodrichglobal.com.sg



## GOODRICH Regional Offices & Galleries

### MALAYSIA

**JOHOR BAHRU, JOHOR (OFFICE)**  
Goodrich Global Sdn. Bhd  
Infinity 8 Reserve Eco Palladium (Block A)  
A-04-01, Pusat Perdagangan Ekoflora,  
Jalan Ekoflora 7/3, Taman Ekoflora,  
81100 Johor Bahru, Johor  
T: (+603) 6201 5757 | F: (+603) 6201 8257 / 8357  
E: info@goodrichglobal.com.my

**KUALA LUMPUR (OFFICE & GALLERY)**  
Goodrich Global Sdn. Bhd  
Unit M-2-2, Block M, Plaza Damas,  
Phase II, Jalan Sri Hartamas 1/70A,  
50480 Kuala Lumpur, Malaysia  
T: (+603) 6201 5757 | F: (+603) 6201 8257 / 8357  
E: info@goodrichglobal.com.my

**KUCHING, SARAWAK (OFFICE & GALLERY)**  
Goodrich Global Sdn. Bhd  
No. 527 Ground Floor,  
Jalan Ang Cheng Ho,  
93100 Kuching, Sarawak, Malaysia  
T: (+6082) 415 757 / 425 757 | F: (+6082) 255 757  
E: info@goodrichglobal.com.my

### THAILAND

**BANGKOK (OFFICE)**  
Sangetsu Goodrich (Thailand) Co., Ltd.  
23/77 Sorachai Building 20th Floor,  
Soi Sukhumvit 63, Sukhumvit Road,  
Klongton Nua, Wattana, Bangkok 10110  
T: (66) 2115 1838 | F: (66) 2115 1354  
E: info@sangetsu-goodrich.co.th

**BANGKOK (GALLERY)**  
Sangetsu Goodrich Gallery Thailand  
58 Sukhumvit 63, Sukhumvit Road,  
Klongton Nua, Wattana, Bangkok 10110  
T: (66) 2381 7778 | F: (66) 2381 7773  
E: info@sangetsu-goodrich.co.th

### VIETNAM

**HO CHI MINH CITY (OFFICE)**  
Sangetsu Goodrich Vietnam Co., Ltd.  
2nd Floor, Lant Building, No. 56-58-60 Hai Ba Trung Street,  
Ben Nghe Ward, District 1, Ho Chi Minh City, Vietnam  
T: +84 (0) 28 3520 2300 | F: +84 (0) 28 3520 2399  
E: info@sangetsu-goodrich.vn

### CHINA

**BEIJING (OFFICE)**  
Goodrich Global Ltd.  
Rm.2106, A Block North Tower SOHO Shang Du,  
8 East Bridge Road, Chaoyang District,  
Beijing 100020, China-PRC  
T: (+8610) 58693577 / 58693578 | F: (+8610) 6569 6893  
E: info\_beijing@goodrichglobal.com.cn

**GUANGZHOU (OFFICE)**  
Room 1303, Tower B, Zhongtai International Square,  
No.161, Linhe Xi road, Tianhe District, Guangzhou,  
Guangdong, 510610, China-PRC  
T: (+8620) 3820 2933

**SHANGHAI (OFFICE)**  
Goodrich Global Ltd.  
25F, 137 Lane, XianXia Road,  
ShengGao International Tower, ChangNing Area,  
Shanghai 200051, China-PRC  
T: (+8621) 6486 8877 | F: (+8621) 6469 1116  
E: info\_shanghai@goodrichglobal.com.cn

**WUJIANG (OFFICE & GALLERY)**  
Goodrich Global Ltd. (Office)  
Goodrich Innovation Hub (Gallery)  
No. 788 Panlong Road,  
Wujiang Economic Development Zone,  
Jiangsu Province 215200, China-PRC  
T: (+86512) 8687 5757 | F: (+86512) 8687 1202  
E: info@goodrichglobal.com.cn

### HONG KONG (CHINA)

**HONG KONG (OFFICE & GALLERY)**  
Goodrich Global Ltd.  
Units 902-904, 9/F., Tower 1, Cheung Sha Wan Plaza,  
833 Cheung Sha Wan Road, Kowloon, Hong Kong  
(Lai Chi Kok MTR Exit A)  
T: (+852) 2668 5757  
E: info@goodrichglobal.com.hk

### INDIA

**MUMBAI (OFFICE & GALLERY)**  
Goodrich Global Furnishing India Pvt. Ltd.  
5A/D Wing, Crystal Plaza, Opposite Infinity Mall  
Andheri West 400053, India  
T: (+91) 22 4264 5757 | F: (+91) 96 5038 5757  
E: sumiaya.sharma@goodrichglobal.in

**NEW DELHI (OFFICE & GALLERY)**  
Goodrich Global Furnishing India Pvt. Ltd.  
804, 2nd Floor, Arjun Nagar, Kodla Mubarakpur,  
Opp. Defence Colony, New Delhi - 110003, India  
T: (Office): (+91) 11 4660 5757 | F: (Office): (+91) 96 5038 5757  
T: (Gallery): (+91) 98 1106 0557 | F: (Gallery): (+91) 96 5087 6957  
E: vincent.sandanadas@goodrichglobal.in

### UNITED ARAB EMIRATES

**DUBAI (OFFICE & WAREHOUSE)**  
Goodrich Global Trading LLC  
Unit 1-13 Plot 598-1149,  
Warehouse No. 6, Dubai Investment Park 1,  
P.O. Box 304, Dubai United Arab Emirates  
T: (+971) 4889 5770 | F: (+971) 4889 5771  
E: info@goodrichglobal.ae

### INDONESIA

**JAKARTA (OFFICE)**  
Goodrich Suites Jakarta 2nd Floor  
Jl. Pangeran Antasari No. 60, Cipete Utara,  
Jakarta Selatan 12150, DKI Jakarta, Indonesia  
T: (+62 21) 722 4345 | F: (+62 21) 724 6360  
E: info@goodrichglobal.co.id

**JAKARTA ANTASARI (GALLERY)**  
Goodrich Suites Jakarta 1st Floor,  
Jl. Pangeran Antasari No. 60, Cipete Utara,  
Jakarta Selatan 12150, DKI Jakarta, Indonesia  
T: (+62 21) 725 5065  
E: info@goodrichglobal.co.id

**JAKARTA FATMAWATI (GALLERY)**  
Jl. RS Fatmawati No. 32B,  
Jakarta Selatan 12410, DKI Jakarta, Indonesia  
T: (+62 21) 750 7508 | F: (+62 21) 766 6281  
E: info@goodrichglobal.co.id

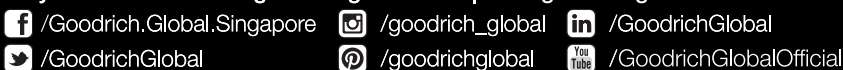
**MALANG (OFFICE & GALLERY)**  
Terusan Dieng No. 39, Pisang Candi,  
Sukun - Malang, Jawa Timur 65146, Indonesia  
T: (+62 341) 563 500 | F: (+62 341) 562 141  
E: info@goodrichglobal.co.id

**SEMARANG (OFFICE & GALLERY)**  
Jl. MH. Thamrin No.43  
Semarang 50134, Jawa Tengah, Indonesia  
T: (+62 24) 356 6065  
E: info@goodrichglobal.co.id

**SERPONG BSD (OFFICE & GALLERY)**  
Ruko Mendrisio 2B No. 26 - 27, Jl. Boulevard Illago  
(BSD Raya Utama) BSD Serpong 15332, Tangerang - Banten  
T: (+62 21) 290 01036 / 40 | F: (+62 21) 290 01016  
E: info@goodrichglobal.co.id

**SURABAYA (OFFICE & GALLERY)**  
Goodrich Building, Pakuwon Square, Blok AK 1 No. 35-36,  
Middle West Ring Road, Surabaya 60216, Jawa Timur, Indonesia  
T: (+62 31) 9900 0395 / 6  
E: info@goodrichglobal.co.id

Stay Connected - [www.goodrichglobal.com](http://www.goodrichglobal.com) | [info@goodrichglobal.com](mailto:info@goodrichglobal.com)



[/goodrichglobal](https://www.instagram.com/goodrichglobal)