

GOODRICH SOLUTIONS
WALLCOVERING
233 | **SAPPHIRE**



Goodrich Global
SINCE 1983

FABRIC BACKED VINYL TYPE II

PREMIERWALL



*We've got you
Covered!*

PREMIERWALL

2019 - 2023.10

COMMERCIAL | HOSPITALITY | RESIDENTIAL



PREMIERWALL SAPPHIRE

52"-54" Fabric-Backed Contract Wallcovering

PHYSICAL PROPERTIES

Weight 20 - 25 oz. PLY / 620 - 774 G/PLM

Roll Size 52-54" x 30yds

Backing Osnaburg / Non Woven

Meets or exceeds Federal Specification CCC-W-408D for Type II Wallcovering

FIRE SAFETY

- Class "A" fire rated - tested in accordance with ASTM E-84 Tunnel test
- Flame spread: 25 / Smoke developed: 45
- Passes NFPA 286 Corner Burn Test

CLEANING/MAINTENANCE

Metallic finishes can be discolored with the use of caustic cleaners. Thus, we recommend only the use of a mild soap solution for cleaning these products. If stronger cleaning is required, first evaluate the cleaner in an inconspicuous location.

ANTI-MICROBIAL FEATURES

PREMIERWALL SAPPHIRE contain mildew and staph resistant additives in the vinyl and plastisol. This provides the wallcovering with resistance to the growth of mildew and bacteria, including mold, fungi, pink stain and black fungal stain.

BATCHING

Since slight variations in shading may occur from time to time, it is important that the roll carrying the same batch number be used in any one area.

ORIGIN

USA

PWS1005 Uroko



Sapphire
Specification

Silk Mirage

PWS0110 Phantom*



PHYSICAL PROPERTIES

Weight: Type II - 20 oz. PLY - 620 g PLM

Backing: Non Woven | Width: 54 in./137cm

Match: Straight hang, Random match
(Except Mylar**)

Horizontal Repeat: N/A

Vertical Repeat: N/A

ENVIRONMENTAL ATTRIBUTES

- **CE** In accordance with EN 15102:2007 + A1:2011
- Meets California Section 01350 IAQ test requirements for wallcovering

** **Mylar** – Reverse Hang

* **Metallic**

These items require different cleaning methods. Please refer to front page.



PWS0101 Deception



PWS0101 Deception



PWS0102 Daydream*



PWS0103 Illusion*



PWS0104 Atmosphere



PWS0105 Spectre*



PWS0106 Impression*



PWS0107 Apparition



PWS0108 Inversion*



PWS0109 Shimmer



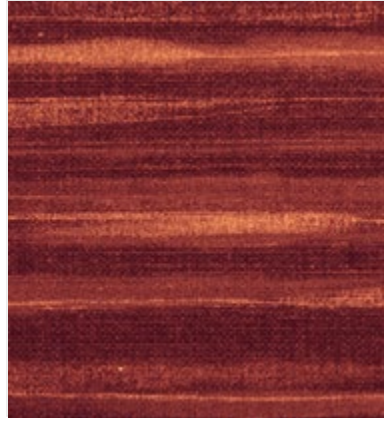
PWS0110 Phantom*



PWS0111 Chimera



PWS0112 Cinnabar



PWS0113 Ghost Merlot*



PWS0114 Refraction*

Silk Mirage (Mylar)

** Mylar-laminated wallcoverings is a specialty product and requires careful handling. Please refer to the installation guidelines before proceeding with installation.

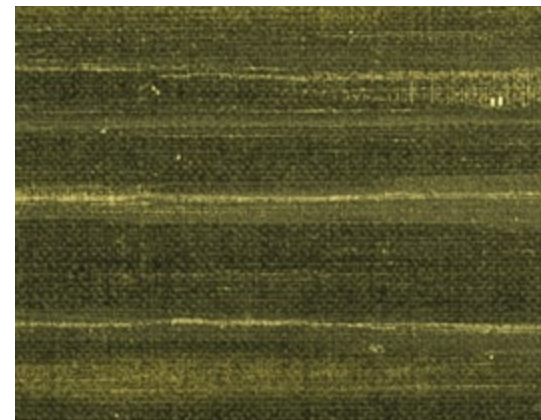
Match: Reverse hang, Random match
This product must be installed in reverse hang.



PWS01M1 Guise**



PWS01M2 Aura**



PWS01M3 Figment**

PWS0207 Heroic



PHYSICAL PROPERTIES

Weight: Type II - 20 oz. PLY - 620 g PLM

Backing: Non Woven | Width: 54 in./137cm

Match: Reverse hang, Random match

Horizontal Repeat: N/A

Vertical Repeat: N/A

ENVIRONMENTAL ATTRIBUTES

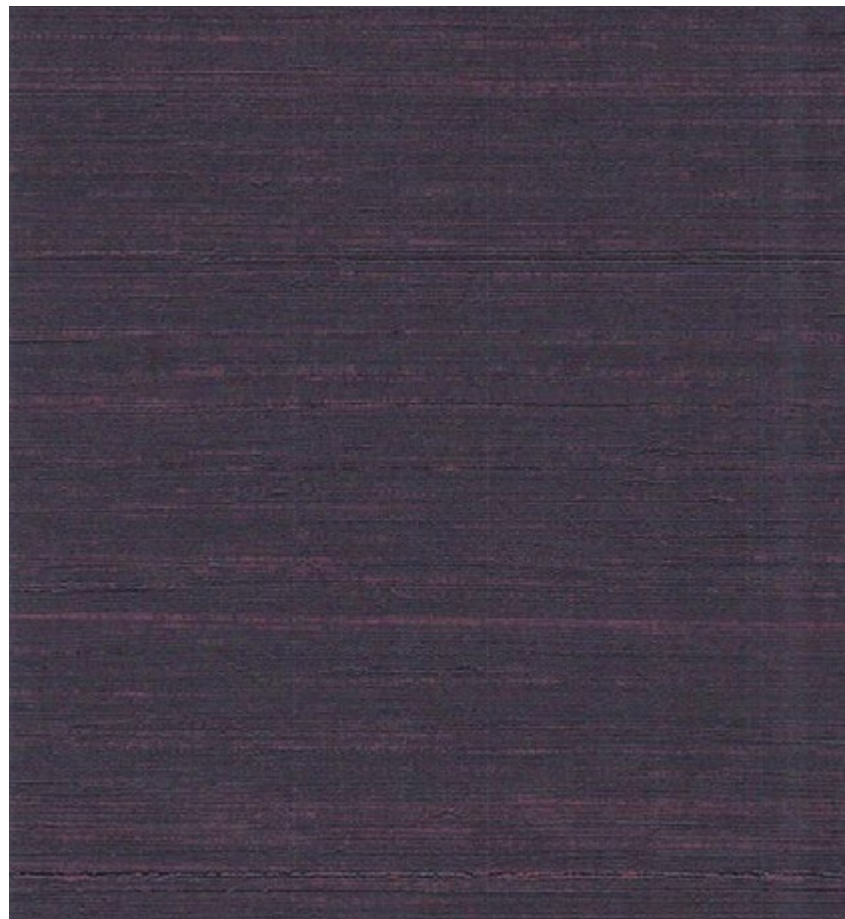
- **CE** In accordance with EN 15102:2007 + A1:2011
- Meets California Section 01350 IAQ test requirements for wallcovering

*** Metallic**

These items require different cleaning methods. Please refer to front page.



PWS0201 Royal



PWS0201 Royal



PWS0202 Opulent



PWS0203 Majestic



PWS0204 Regal



PWS0205 Verdant



PWS0206 Precious



PWS0207 Heroic



PWS0208 Luxe



PWS0209 Palatial



PWS0210 Splendid



PWS0211 Noble



PWS0212 Costly



PWS0213 Grandiose



PWS0214 Grand



PWS0215 Lavish



PWS0216 Deluxe

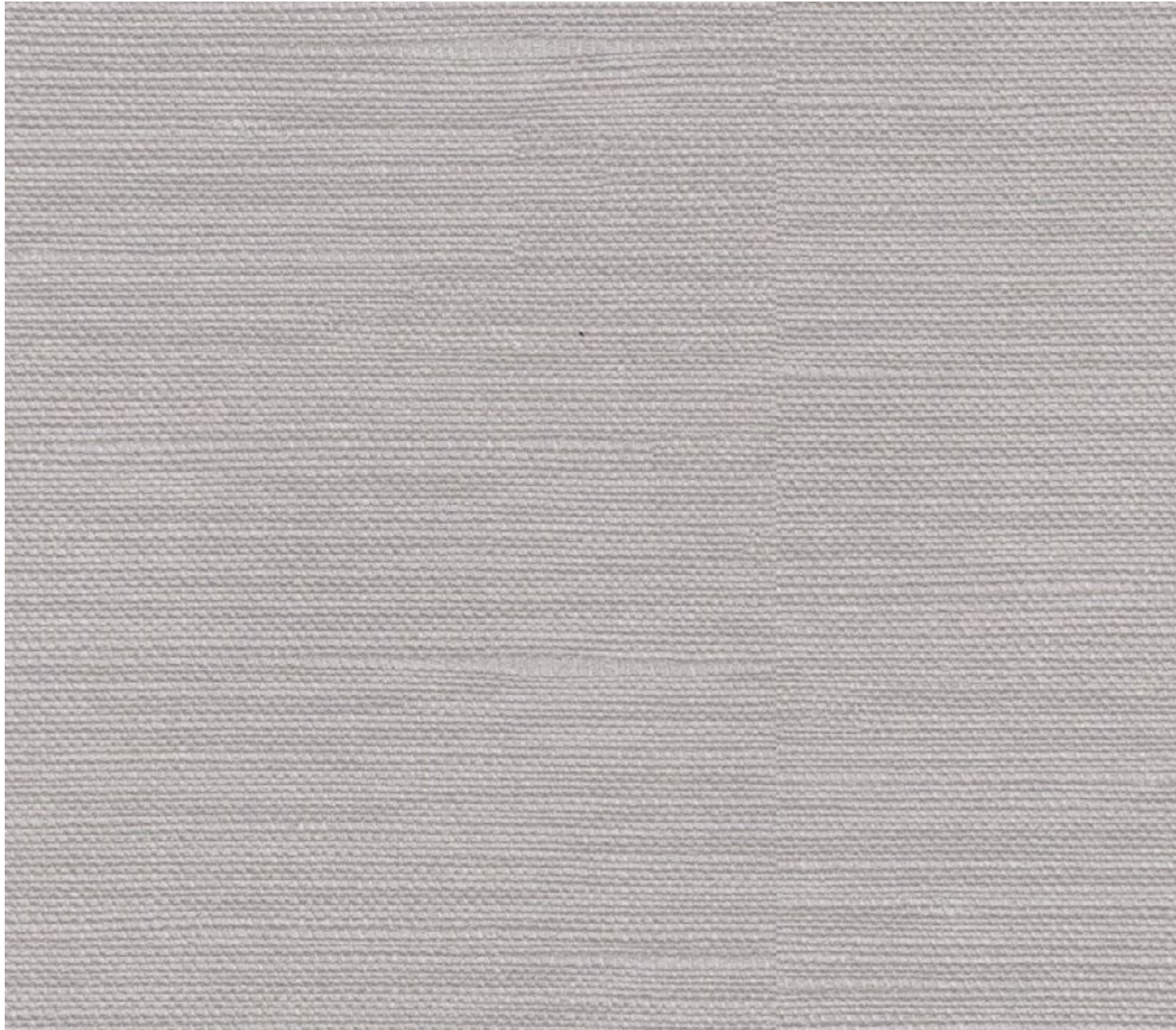


PWS0217 Stately



PWS0218 Distinguished

PWS0314 Frost



PHYSICAL PROPERTIES

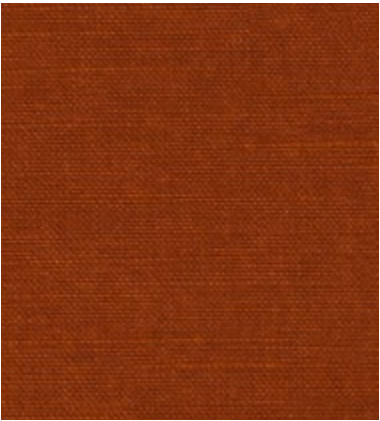
Weight: Type II - 20 oz. PLY - 620 g PLM
Backing: Osnaburg | Width: 54 in./137cm
Match: Reverse hang, Random match

Horizontal Repeat: N/A

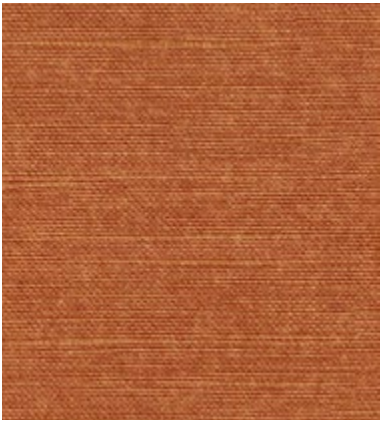
Vertical Repeat: N/A

ENVIRONMENTAL ATTRIBUTES

- **CE** In accordance with EN 15102:2007 + A1:2011
- Meets California Section 01350 IAQ test requirements for wallcovering



PWS0301 Socialite



PWS0302 Malahide



PWS0303 Lively



PWS0304 Tousle



PWS0305 Mediterranean



PWS0306 Risqué



PWS0307 Draperie



PWS0308 Lounge

PWS0314 Frost



PWS0309 Summer Sheets



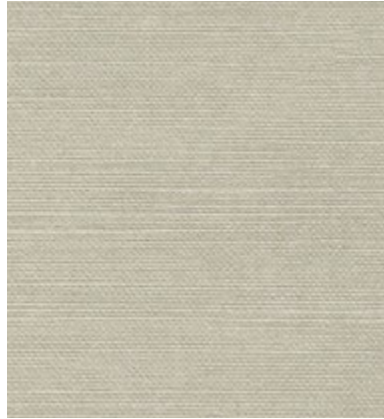
PWS0310 Bleached



PWS0313 Sheer



PWS0311 Clothesline



PWS0312 Combed



PWS0314 Frost



PWS0315 Hang Dry



PWS0316 Plebeian



PWS0317 Belgian Flax



PWS0318 White Wing



PWS0319 Winter White



PWS0320 Skylight



PWS0321 Casual



PWS0322 Light of Day



PWS0323 Hemline



PWS0324 Spry



PWS0325 Early Harvest



PWS0326 Stonewash



PWS0327 Embellish



PWS0328 Belfast



PWS0329 Flax Bloom



PWS0330 Loom



PWS0331 Bronze Age



PWS0332 Duvet



PWS0333 Artisan



PWS0334 Tunic

PWS0411 Expression



PHYSICAL PROPERTIES

Weight: Type II - 20 oz. PLY - 620 g PLM
Backing: Osnaburg | Width: 54 in./137cm
Match: Reverse Hang, Random Match

Horizontal Repeat: N/A

Vertical Repeat: N/A

ENVIRONMENTAL ATTRIBUTES

- **CE** In accordance with EN 15102:2007 + A1:2011
- Meets California Section 01350 IAQ test requirements for wallcovering



PWS0411 Expression



PWS0401 Intuitive



PWS0402 Stability



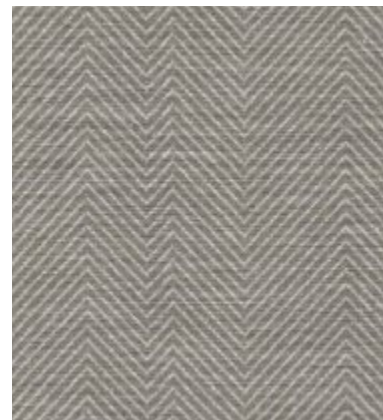
PWS0403 Compassion



PWS0404 Prosperity



PWS0405 Longevity



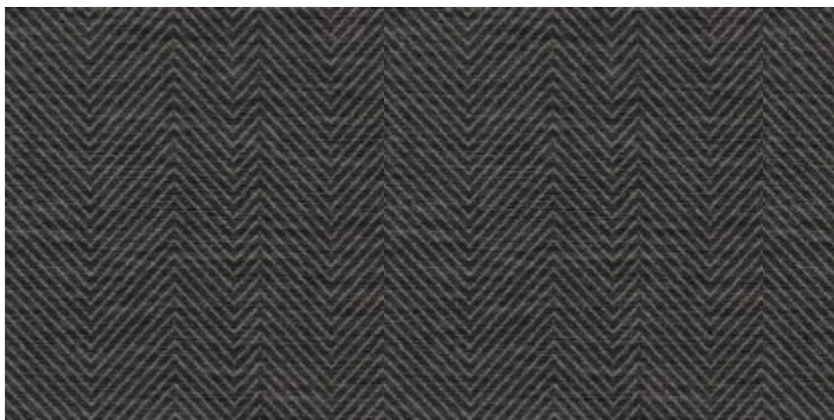
PWS0406 Integrity



PWS0407 Connection



PWS0408 Harmony



PWS0409 Confidence



PWS0410 Commitment



PWS0411 Expression

Washed Medallion

PWS0512 Eclipse*



PHYSICAL PROPERTIES

Weight: Type II - 20 oz. PLY - 620 g PLM

Backing: Non Woven | Width: 54 in./137cm

Match: Straight hang, Straight match

Horizontal Repeat: 26 in.

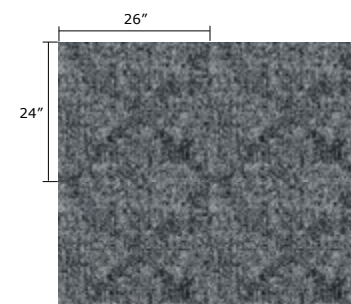
Vertical Repeat: 24 in.

ENVIRONMENTAL ATTRIBUTES

- Meets California Section 01350 IAQ test requirements for wallcovering

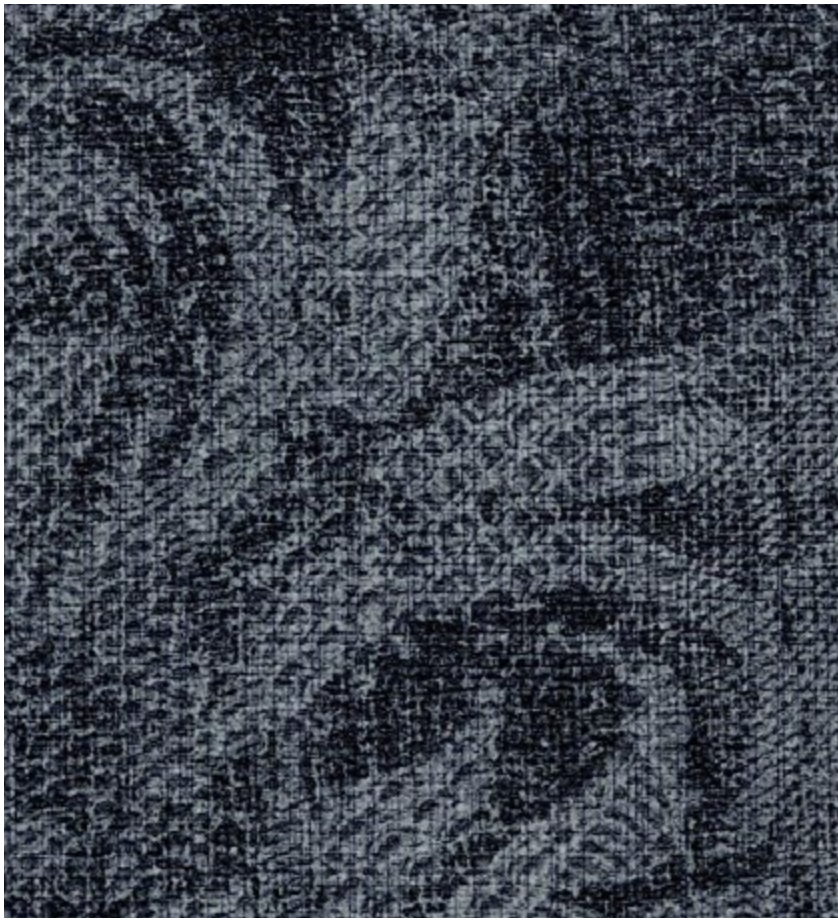
*** Metallic**

These items require different cleaning methods. Please refer to front page.





PWS0501 Celestial*



PWS0501 Celestial*



PWS0502 Solstice*



PWS0503 Equinox*



PWS0504 Filtered Sunlight



PWS0505 Harvest Moon



PWS0506 Orbital



PWS0507 Meteor Shower*



PWS0508 Universal*



PWS0509 Global Market*



PWS0510 Hemisphere



PWS0511 Moonbeam*

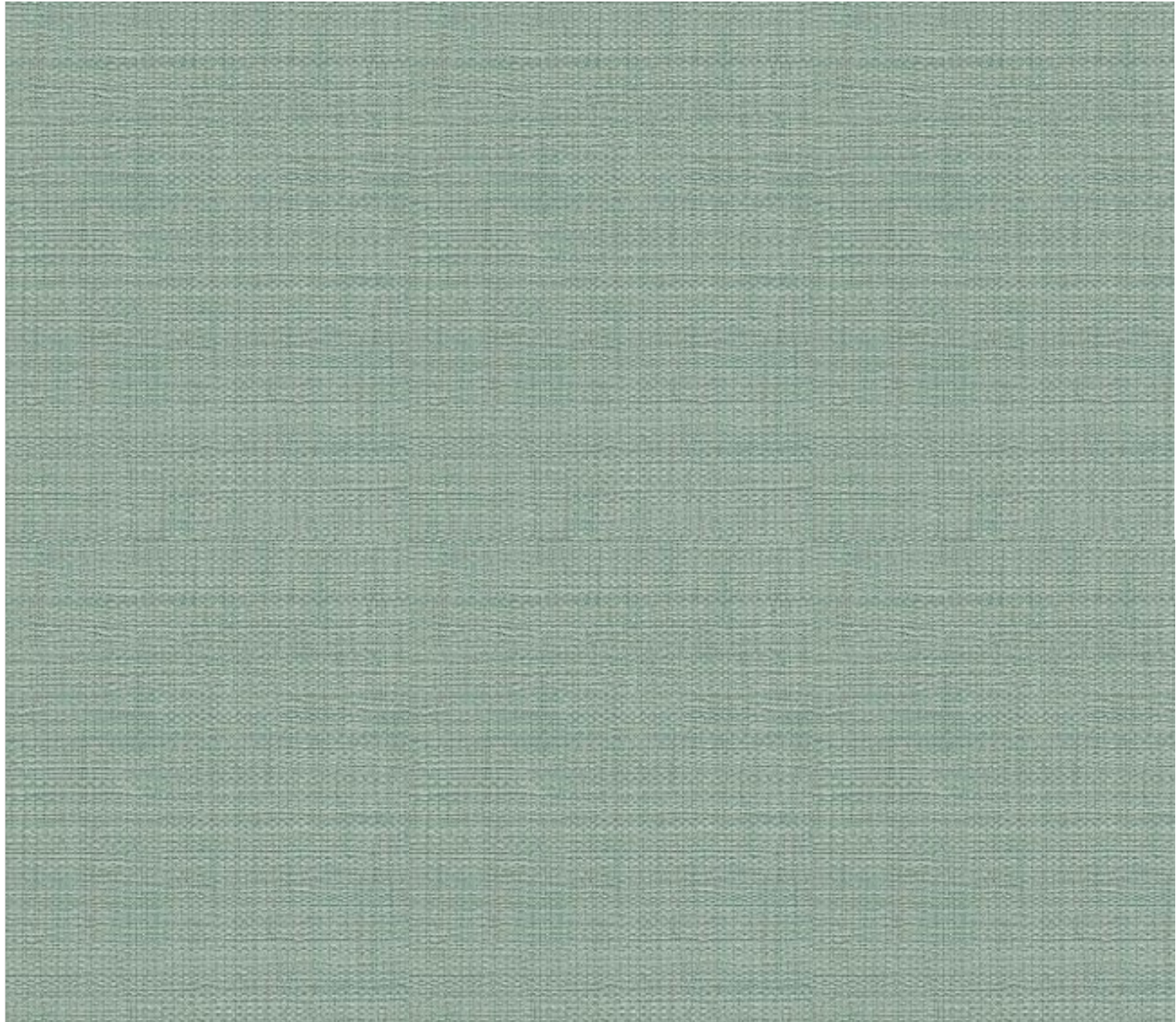


PWS0512 Eclipse*



PWS0513 Terrestrial*

PWS0615 Minted*



PHYSICAL PROPERTIES

Weight: Type II - 20 oz. PLY - 620 g PLM
Backing: Osnaburg | Width: 54 in./137cm
Match: Reverse hang, Random match

Horizontal Repeat: N/A
Vertical Repeat: N/A

ENVIRONMENTAL ATTRIBUTES

- Meets California Section 01350 IAQ test requirements for wallcovering

*** Metallic**

These items require different cleaning methods. Please refer to front page.



PWS0601 Feather Down



PWS0602 Alabaster



PWS0603 Moonlight



PWS0604 Enchanted



PWS0605 Osiris



PWS0606 Reverence

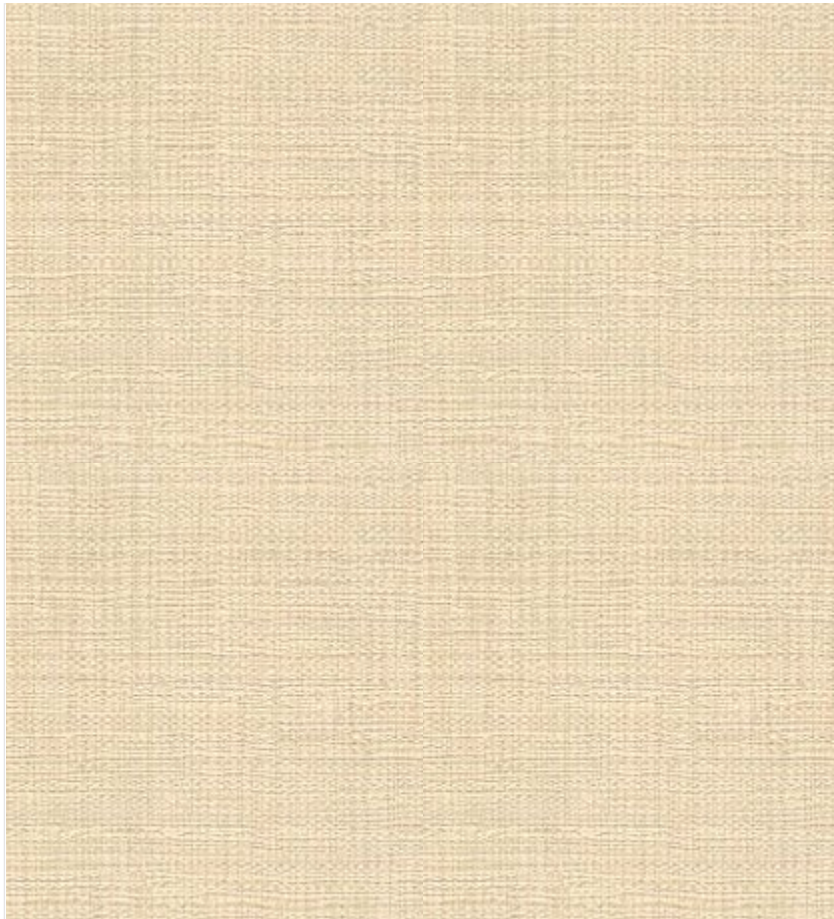


PWS0607 Summerset*



PWS0608 Parisian Grey*

PWS0617 Sangria*



PWS0609 White Linen



PWS0610 Wager



PWS0611 Skondia



PWS0612 The Magic Book*



PWS0613 Incantation*



PWS0614 Skye*



PWS0615 Minted*



PWS0616 Emerald City*



PWS0617 Sangria*



PWS0618 Pewter*



PWS0619 The Great Sea*



PWS0620 Deep Indigo*



PWS0621 Vivacious*

Authenticity

PWS0716 Monte Cristo



PHYSICAL PROPERTIES

Weight: Type II - 20 oz. PLY - 620 g PLM

Backing: Osnaburg | Width: 54 in./137cm

Match: Reverse hang, Random match

Horizontal Repeat: N/A

Vertical Repeat: N/A

ENVIRONMENTAL ATTRIBUTES

- **CE** In accordance with EN 15102:2007 + A1:2011
- Meets California Section 01350 IAQ test requirements for wallcovering



PWS0707 Les Miserables*



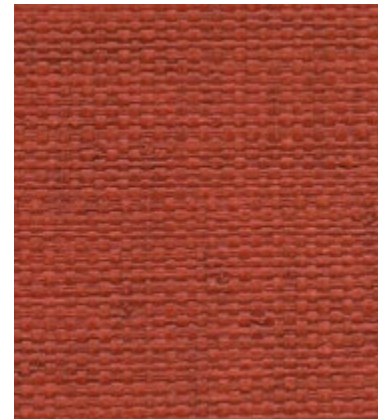
PWS0707 Les Miserables*



PWS0701 Pride & Prejudice



PWS0702 Little Women



PWS0703 Madame Bovary



PWS0704 Odyssey



PWS0705 Scarlet Letter



PWS0706 Moby Dick



PWS0708 Dracula



PWS0709 Oliver Twist



PWS0710 Treasure Island



PWS0711 Symposium



PWS0712 Candide



PWS0713 Jane Eyre



PWS0714 Wuthering*



PWS0715 Paradise



PWS0716 Monte Cristo



PWS0717 Ivanhoe



PWS0718 Dorian Grey



PWS0719 The Iliad



PWS0720 Tom Sawyer



PWS0721 Tale of Two Cities



PWS0722 Great Expectations



PWS0723 Huckleberry

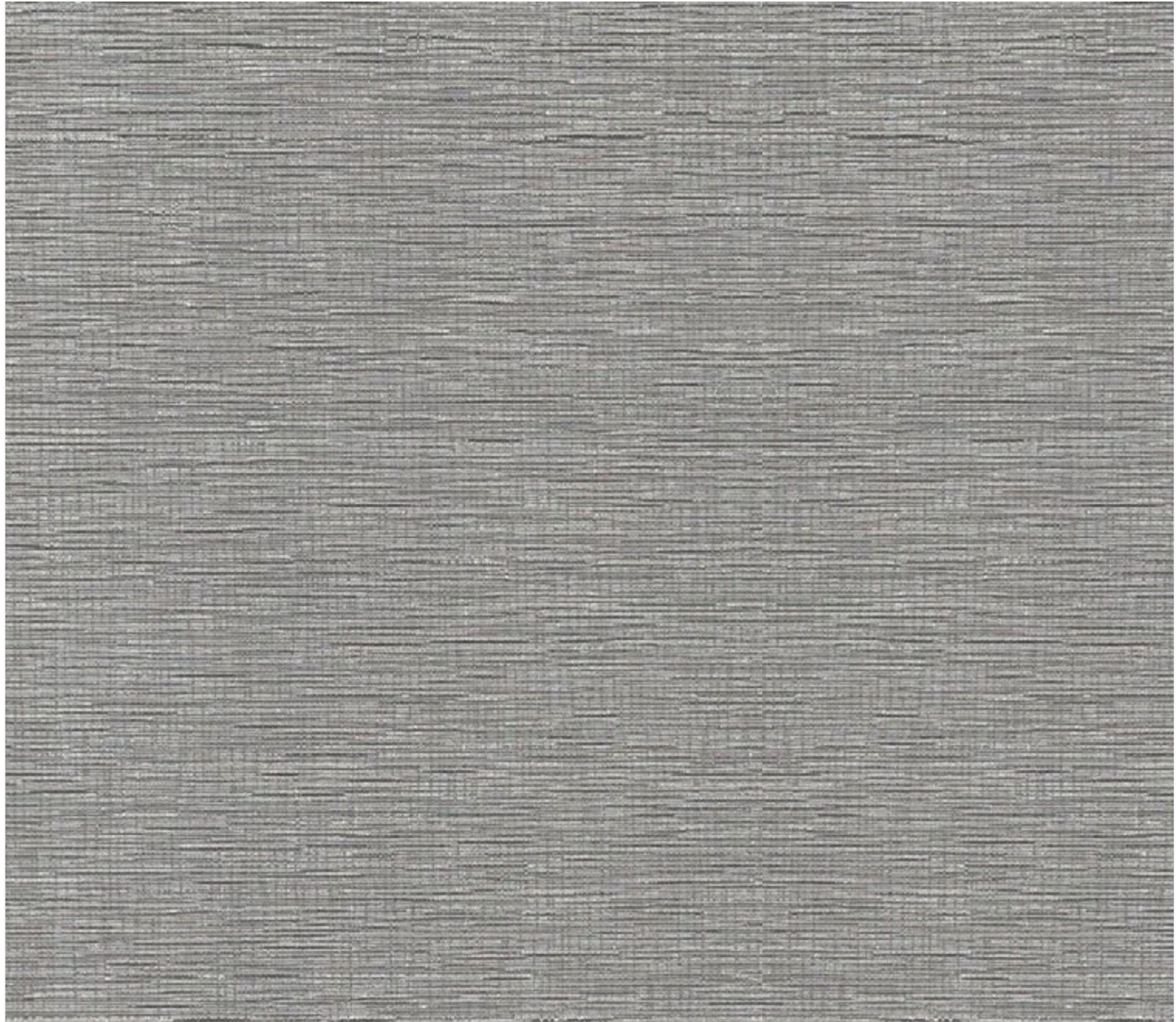


PWS0724 Copperfield*



PWS0725 Don Quixote

PWS0815 Stability



PHYSICAL PROPERTIES

Weight: Type II - 20 oz. PLY - 620 g PLM
Backing: Osnaburg | Width: 54 in./137cm
Match: Reverse hang, Random match

Horizontal Repeat: N/A

Vertical Repeat: N/A

ENVIRONMENTAL ATTRIBUTES

- Meets California Section 01350 IAQ test requirements for wallcovering



PWS0801 Strength



PWS0802 Balance



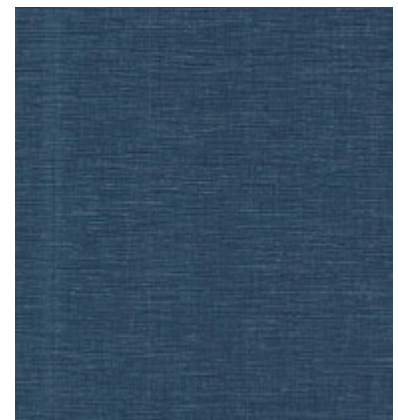
PWS0803 Trek



PWS0804 Submerge

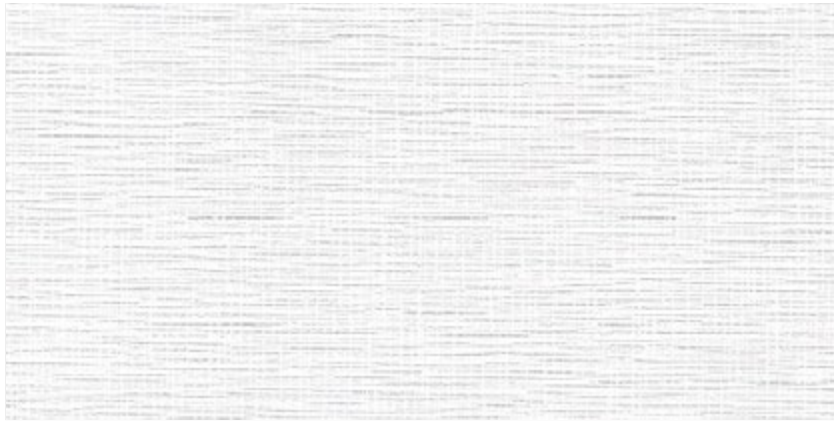


PWS0805 Hike



PWS0806 Dive

PWS0817 Optimize



PWS0807 Breath



PWS0808 Exhale



PWS0809 Explore



PWS0810 Essential



PWS0811 Equilibrium



PWS0812 Appraise



PWS0813 Energize



PWS0814 Retreat



PWS0815 Stability



PWS0816 Boost

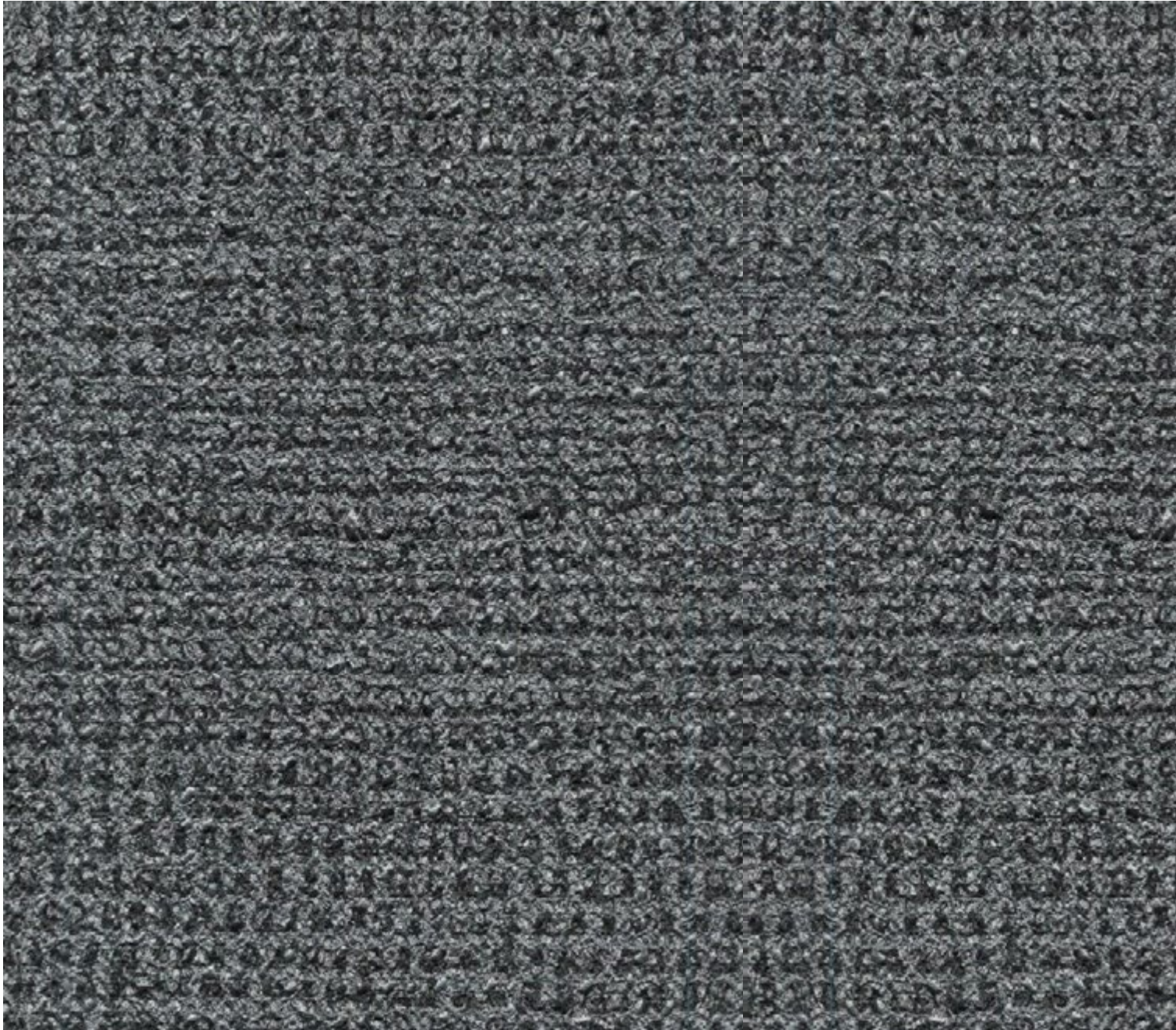


PWS0817 Optimize



PWS0818 Core

PWS0904 Shadow



PHYSICAL PROPERTIES

Weight: Type II - 20 oz. PLY - 620 g PLM

Backing: Osnaburg | Width: 54 in./137cm

Match: Reverse hang, Random match

Horizontal Repeat: N/A

Vertical Repeat: N/A

ENVIRONMENTAL ATTRIBUTES

- Meets California Section 01350 IAQ test requirements for wallcovering





PWS0901 Dove



PWS0902 Plaster



PWS0903 Pebble



PWS0904 Shadow



PWS0905 Mica



PWS0906 Pumice



PWS0907 Barley



PWS0908 Flax



PWS0909 Twig



PWS0910 Glint



PWS0911 Grain



PWS0912 Earth



PWS0913 Matcha



PWS0914 Pine



PWS0915 Azure



PWS0916 Shore

PWS1012 Mizu



PHYSICAL PROPERTIES

Weight: Type II - 20 oz. PLY - 620 g PLM
Backing: Non Woven | Width: 54 in./137cm
Match: Reverse hang, Random match

Horizontal Repeat: N/A

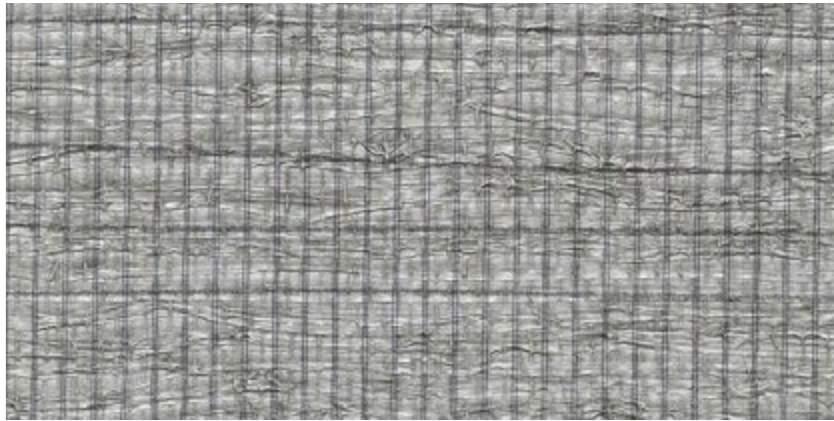
Vertical Repeat: N/A

ENVIRONMENTAL ATTRIBUTES

- Meets California Section 01350 IAQ test requirements for wallcovering



PWS1004 Chairo



PWS1001 Ishi



PWS1002 Shiro



PWS1003 Suna



PWS1004 Chairō



PWS1005 Uroko



PWS1006 Tatami



PWS1007 Inu



PWS1008 Kami



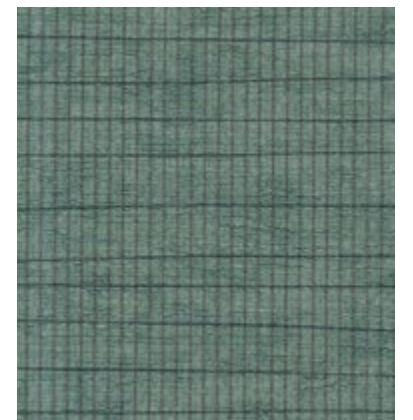
PWS1009 Aki



PWS1010 Umi



PWS1011 Nakama



PWS1012 Mizu

Barking Mad

PWS1110 Bronze Frenzy*



PHYSICAL PROPERTIES

Weight: Type II - 20 oz. PLY - 620 g PLM
Backing: Osnaburg | Width: 54 in./137cm
Match: Reverse hang, Random match

Horizontal Repeat: N/A
Vertical Repeat: N/A

ENVIRONMENTAL ATTRIBUTES

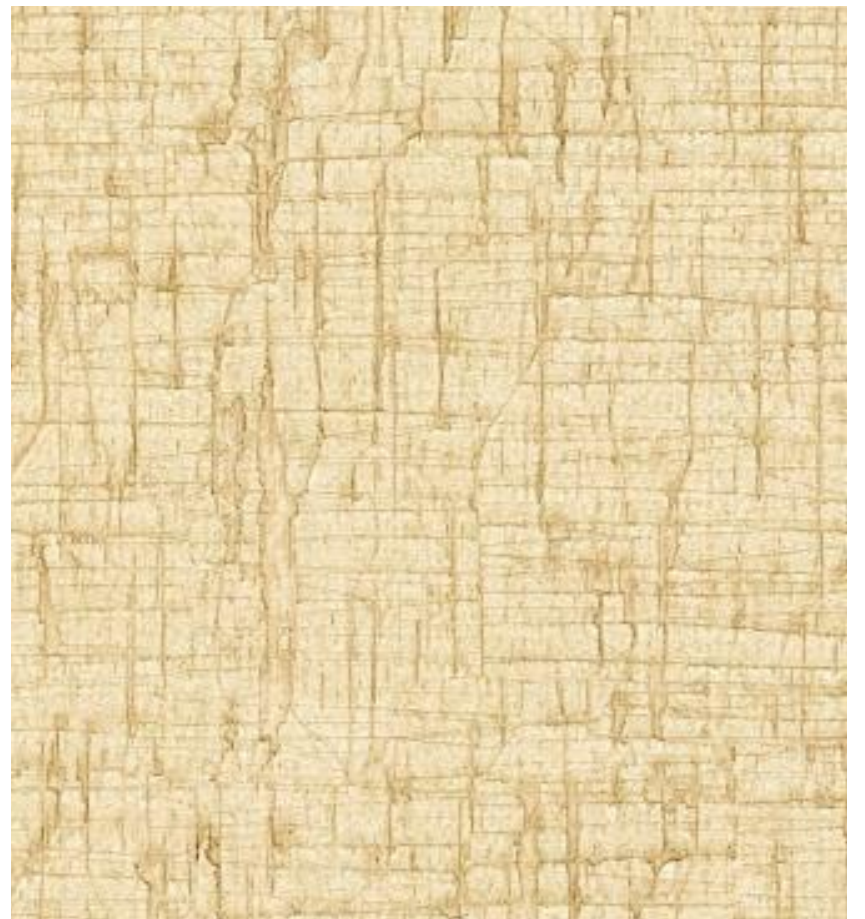
- Meets California Section 01350 IAQ test requirements for wallcovering

*** Metallic**

These items require different cleaning methods. Please refer to front page.



PWS1101 Imaginary Friend



PWS1101 Imaginary Friend



PWS1102 Delirium



PWS1103 Moonlight Madness



PWS1104 A Little Off



PWS1105 Gossamer Wings



PWS1106 Gold Mania



PWS1107 Golden Specter*



PWS1108 Rapunzel*



PWS1109 Toffee Obsession



PWS1110 Bronze Frenzy*



PWS1111 Crazy Copper*



PWS1112 Platinum Frenzy



PWS1113 Brainstorm



PWS1114 Intensely Coffee



PWS1115 Daze



PWS1116 Alien Gray



PWS1117 Dark Delusion

PWS1201 Bleached



PHYSICAL PROPERTIES

Weight: Type II - 20 oz. PLY - 620 g PLM
Backing: Osnaburg | Width: 54 in./137cm
Match: Reverse hang, Random match

Horizontal Repeat: N/A

Vertical Repeat: N/A

ENVIRONMENTAL ATTRIBUTES

- Meets California Section 01350 IAQ test requirements for wallcovering





PWS1201 Bleached



PWS1202 Pining



PWS1203 Drift



PWS1204 Provençal



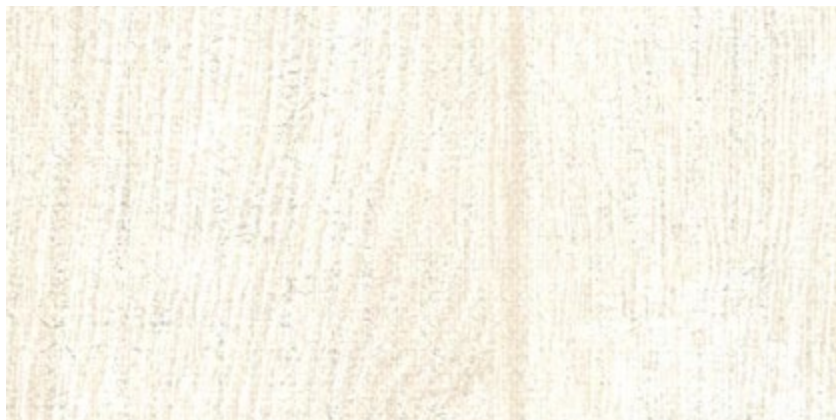
PWS1205 Tuscan



PWS1206 Clove



PWS1207 Ancient Oak



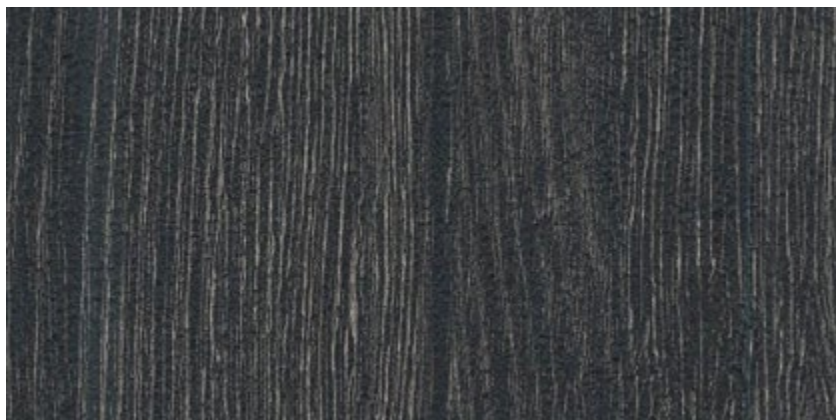
PWS1208 White Washed



PWS1209 Beach



PWS1210 Weathered



PWS1211 Smoked



PWS1212 Aged Walnut



PWS1213 Espresso

PWS1307 Fountain



PHYSICAL PROPERTIES

Weight: Type II - 20 oz. PLY - 620 g PLM
Backing: Osaburg | Width: 54 in./137cm
Match: Reverse hang, Random match

Horizontal Repeat: N/A

Vertical Repeat: N/A

ENVIRONMENTAL ATTRIBUTES

- **CE** In accordance with EN 15102:2007 + A1:2011
- Meets California Section 01350 IAQ test requirements for wallcovering

*** Metallic**

These items require different cleaning methods. Please refer to front page.



PWS1303 Terrace



PWS1301 Portico



PWS1302 Raw



PWS1303 Terrace



PWS1304 Brutalist



PWS1305 Plinth



PWS1306 Monument



PWS1307 Fountain



PWS1308 Chamber*



PWS1309 Citadel



PWS1310 Acid Stained



PWS1311 Underpass



PWS1312 Bunker

PWS1422 Moss



PHYSICAL PROPERTIES

Weight: Type II - 20 oz. PLY - 620 g PLM
Backing: Osnaburg | Width: 54 in./137cm
Match: Reverse hang, Random match

Horizontal Repeat: N/A

Vertical Repeat: N/A

ENVIRONMENTAL ATTRIBUTES

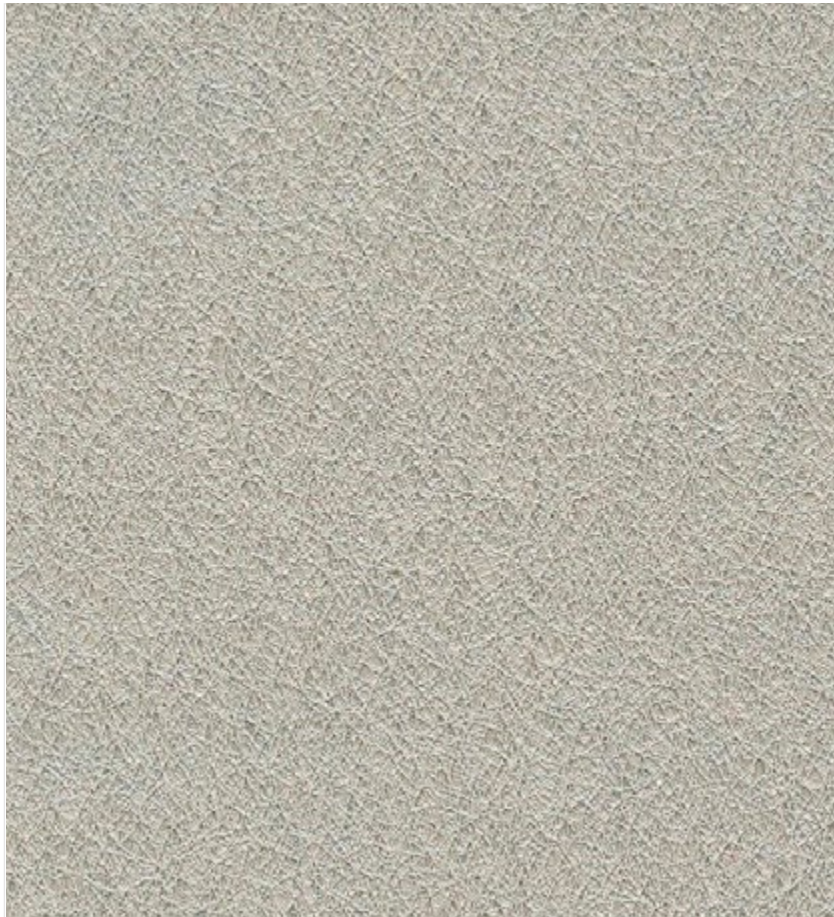
- Meets California Section 01350 IAQ test requirements for wallcovering

*** Metallic**

These items require different cleaning methods. Please refer to front page.



PWS1401 Melded



PWS1401 Melded



PWS1402 Stargazer



PWS1403 Fawn



PWS1404 Enchanted



PWS1405 Element



PWS1406 Lunar



PWS1407 Aquatic



PWS1408 Landscape



PWS1409 Tree Bark



PWS1410 Shale



PWS1411 Mineral



PWS1412 Dark Ash*



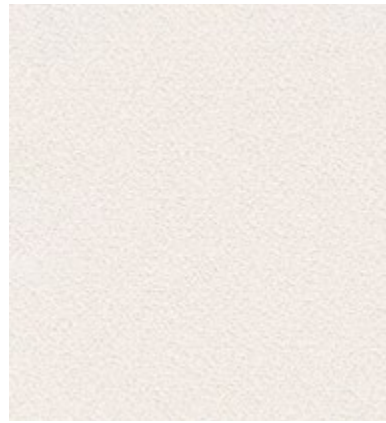
PWS1413 Earthen



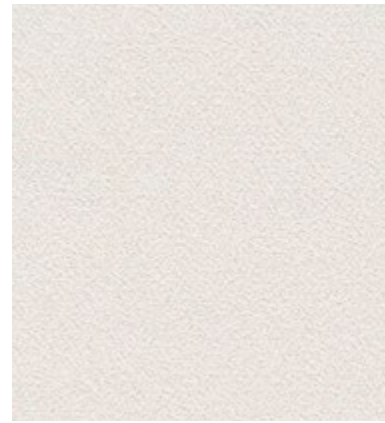
PWS1414 Visionary



PWS1415 Metal



PWS1416 Illusion



PWS1417 Harmony



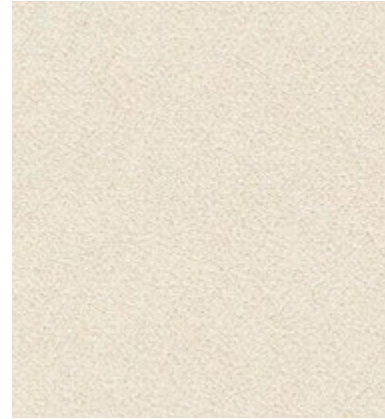
PWS1418 Infused



PWS1419 Organic



PWS1420 Opalescence



PWS1421 Mottled



PWS1422 Moss



PWS1423 Sand Drift



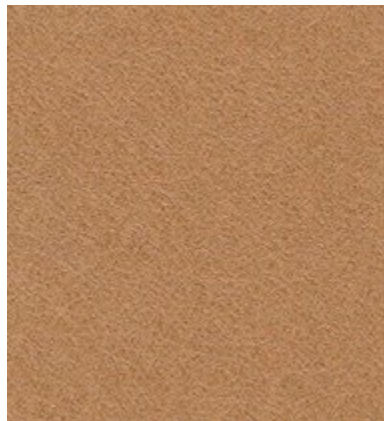
PWS1424 Seashell



PWS1425 Moon Dance



PWS1426 Fascination



PWS1427 Basketry

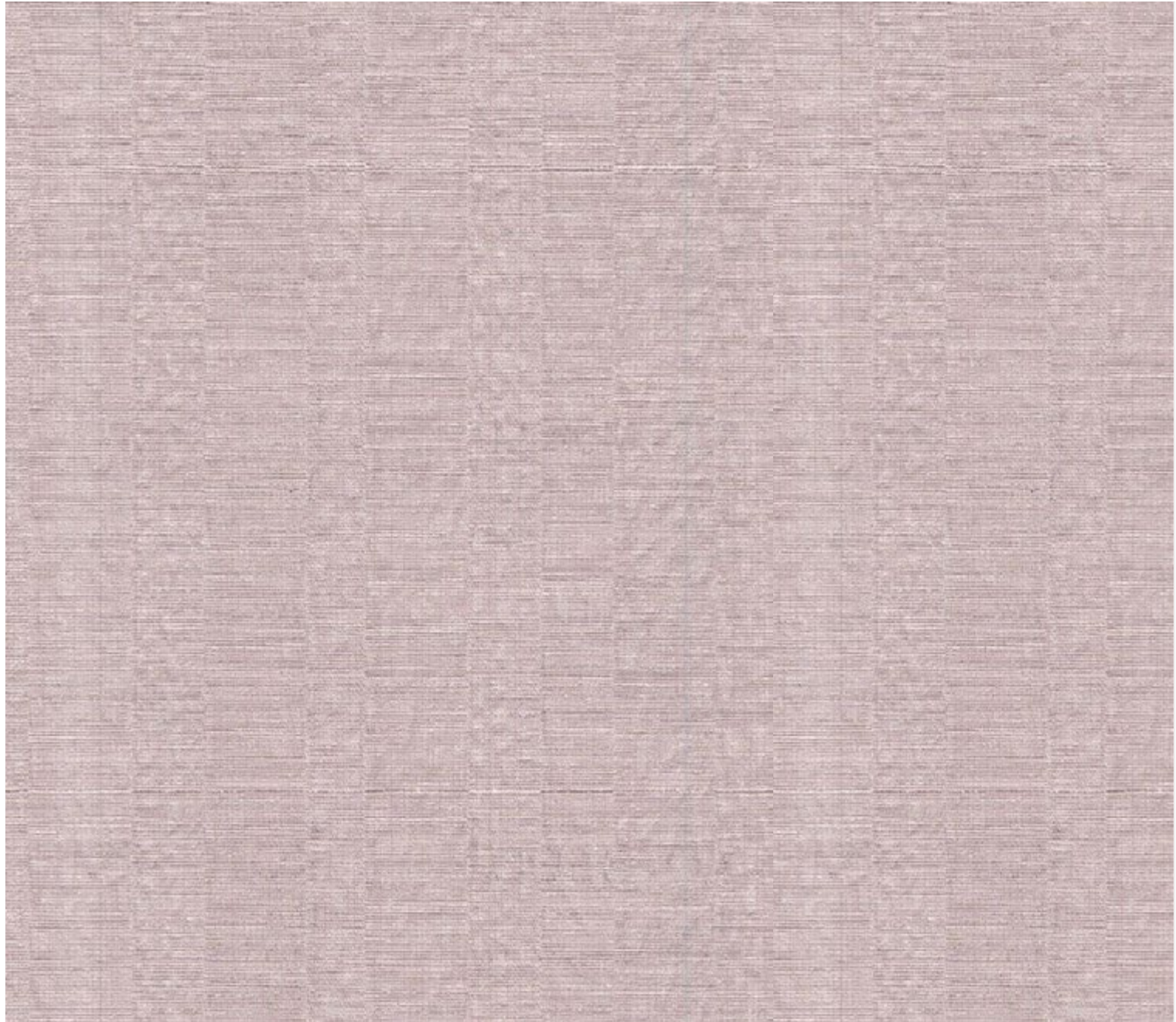


PWS1428 Cultural



PWS1429 Foxglove

PWS1515 Orchid Mantis



PHYSICAL PROPERTIES

Weight: Type II - 25 oz. PLY - 774 g PLM
Backing: Osnaburg | Width: 54 in./137cm
Match: Straight hang, Straight match

Horizontal Repeat: 52 in.

Vertical Repeat: 27 in.

ENVIRONMENTAL ATTRIBUTES

- Meets California Section 01350 IAQ test requirements for wallcovering



PWS1501 Camouflage



PWS1501 Camouflage



PWS1502 Walking Stick



PWS1503 Mountain Hare



PWS1504 Snowy Owl



PWS1505 Tree Lizard



PWS1506 Katydid



PWS1507 Silver Moth



PWS1508 Sloth



PWS1509 Seadragon



PWS1510 Chameleon



PWS1511 Butterfly Wing



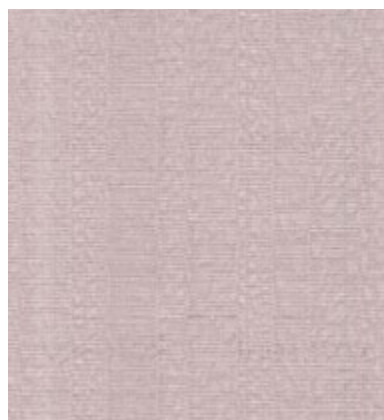
PWS1512 Mamba



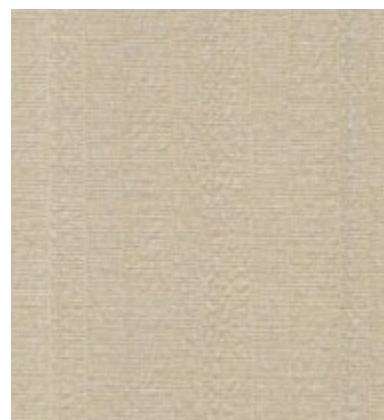
PWS1513 Tiger



PWS1514 Scarlet Macaw



PWS1515 Orchid Mantis



PWS1516 Leopard

Well Dressed

PWS1607 Cat Walk



PHYSICAL PROPERTIES

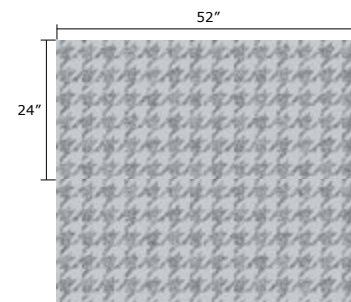
Weight: Type II - 20 oz. PLY - 620 g PLM
Backing: Non Woven | Width: 54 in./137cm
Match: Straight hang, Straight match

Horizontal Repeat: 52 in.

Vertical Repeat: 24 in.

ENVIRONMENTAL ATTRIBUTES

- Meets California Section 01350 IAQ test requirements for wallcovering





PWS1610 Black Tie



PWS1601 Essential



PWS1602 Cocktail Hour



PWS1603 All Occasion



PWS1604 Glam



PWS1605 En Vogue



PWS1606 Fashion Week



PWS1607 Cat Walk



PWS1608 Runway



PWS1609 Business Casual



PWS1610 Black Tie

Canopy

PWS1703 Dapple



PHYSICAL PROPERTIES

Weight: Type II - 20 oz. PLY - 620 g PLM

Backing: Non Woven | Width: 54 in./137cm

Match: Straight hang, Straight match

Horizontal Repeat: 52 in.

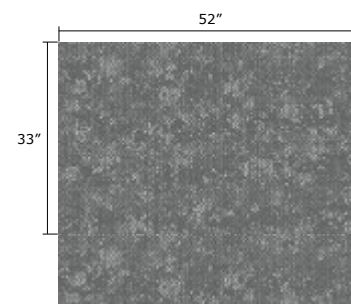
Vertical Repeat: 33 in.

ENVIRONMENTAL ATTRIBUTES

- Meets California Section 01350 IAQ test requirements for wallcovering

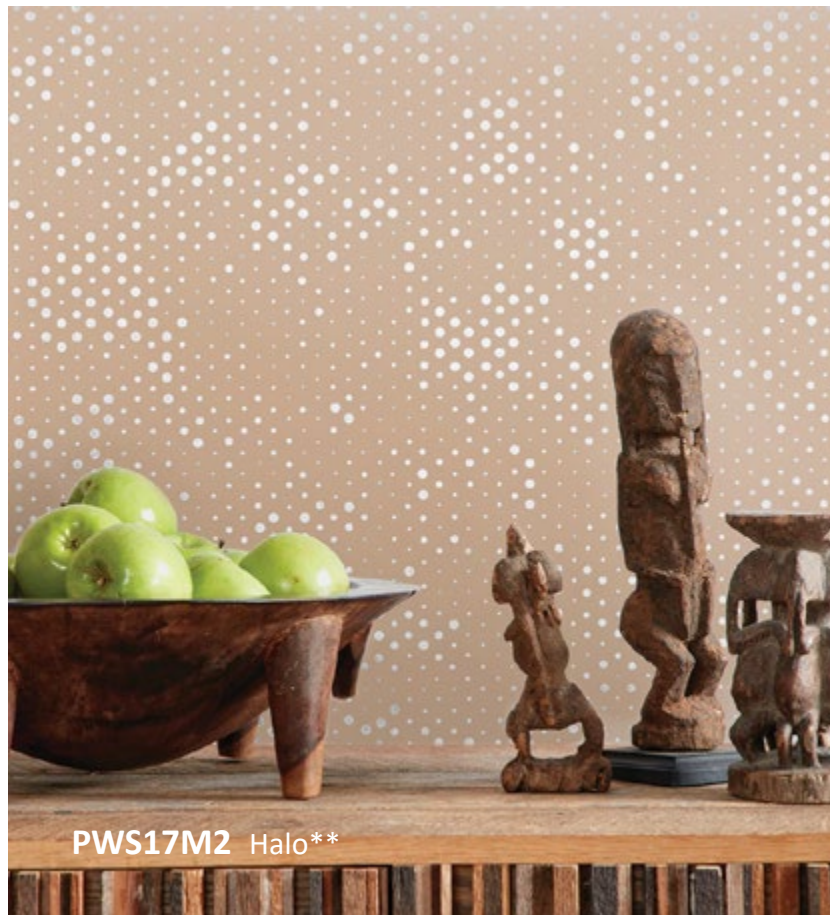
** Mylar

* Metallic



Canopy (Mylar)

** Mylar-laminated wallcoverings is a specialty product and requires careful handling. Please refer to the installation guidelines before proceeding with installation.



PWS17M1 Aura**



PWS17M2 Halo**



PWS1701 Galaxy



PWS1702 Luna



PWS1703 Dapple



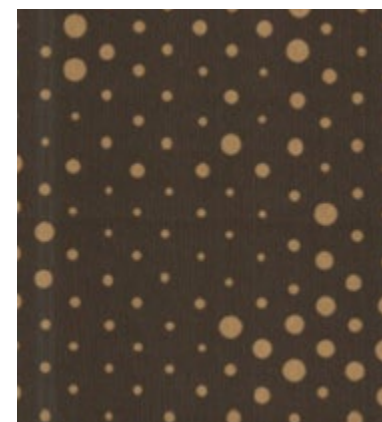
PWS1704 Flicker



PWS1705 Midnight



PWS1706 Mist



PWS1707 Firelight



PWS1708 Harvest

PWS1802 Granite



PHYSICAL PROPERTIES

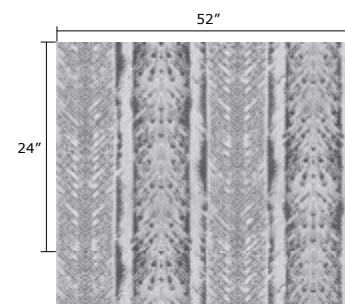
Weight: Type II - 20 oz. PLY - 620 g PLM
Backing: Osnaburg | Width: 54 in./137cm
Match: Straight Hang, Random match

Horizontal Repeat: N/A

Vertical Repeat: N/A

ENVIRONMENTAL ATTRIBUTES

- Meets California Section 01350 IAQ test requirements for wallcovering

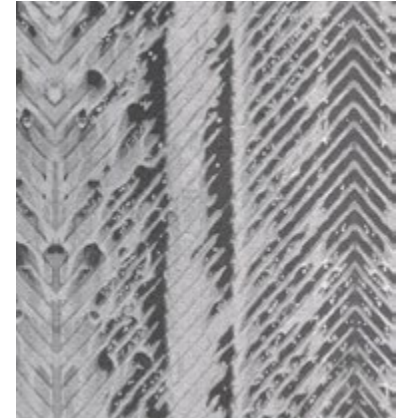




PWS1802 Granite



PWS1801 Frost



PWS1802 Granite



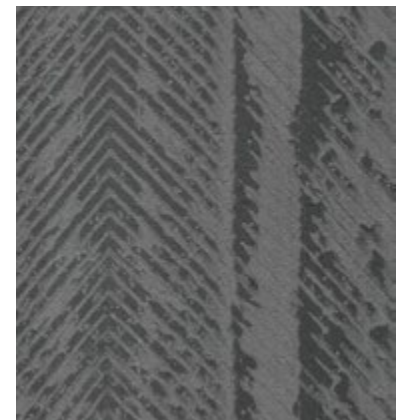
PWS1803 Core



PWS1804 Clay



PWS1805 Creek



PWS1806 Basalt



PWS1807 Bark



PWS1808 Russet



PWS1809 Hansa



PWS1810 Spruce

PREMIERWALL SAPPHIRE (INDEX)

Page	Pattern No	Pattern Name	Weight (oz)	Pattern Repeat (In)		Pattern Match	Backing	Roll Size
				Horizontal	Vertical			
3 - 5	PWS0101 - PWS0114	Silk Mirage	20	0	0	Straight Random	Non Woven	54" x 30yds
5	PWS01M1 - PWS01M3	Silk Mirage (Mylar)	20	0	0	Reverse Random	Non Woven	54" x 30yds
6 - 8	PWS0201 - PWS0218	Silken One	20	0	0	Reverse Random	Non Woven	54" x 30yds
9 - 12	PWS0301 - PWS0334	Lino	20	0	0	Reverse Random	Osnaburg	54" x 30yds
13 - 14	PWS0401 - PWS0411	Cross the Line	20	0	0	Reverse Random	Osnaburg	54" x 30yds
15 - 17	PWS0501 - PWS0513	Washed Medallion	20	26	24	Straight Match	Non Woven	54" x 30yds
18 - 20	PWS0601 - PWS0621	Gilded Linen	20	0	0	Reverse Random	Osnaburg	54" x 30yds
21 - 23	PWS0701 - PWS0725	Authenticity	20	0	0	Reverse Random	Osnaburg	54" x 30yds
24 - 26	PWS0801 - PWS0818	Flexiweave	20	0	0	Reverse Random	Osnaburg	54" x 30yds
27 - 29	PWS0901 - PWS0916	Wabi-Sabi	20	0	0	Reverse Random	Osnaburg	54" x 30yds
30 - 32	PWS1001 - PWS1012	Rake	20	0	0	Reverse Random	Non Woven	54" x 30yds
33 - 35	PWS1101 - PWS1117	Barking Mad	20	0	0	Reverse Random	Osnaburg	54" x 30yds
36 - 38	PWS1201 - PWS1213	Chateau	20	0	0	Reverse Random	Osnaburg	54" x 30yds
39 - 41	PWS1301 - PWS1312	Slab	20	0	0	Reverse Random	Osnaburg	54" x 30yds
42 - 45	PWS1401 - PWS1429	Destiny	20	0	0	Reverse Random	Osnaburg	54" x 30yds
46 - 48	PWS1501 - PWS1516	Illusive	25	52	27	Straight Match	Osnaburg	54" x 30yds
49 - 50	PWS1601 - PWS1610	Well Dressed	20	52	24	Straight Match	Non Woven	54" x 30yds
51 - 52	PWS1701 - PWS1708	Canopy	20	52	33	Straight Match	Non Woven	54" x 30yds
52	PWS17M1 - PWS17M2	Canopy (Mylar)	20	52	33	Straight Match	Non Woven	54" x 30yds
53 - 54	PWS1801 - PWS1810	Trail	20	0	0	Straight Random	Osnaburg	54" x 30yds

Installation and Maintenance Guidelines

BEFORE YOU BEGIN

Examine the material carefully to ensure that the pattern, colour, and quality are satisfactory and as ordered. Check that the quantity and dimensions match the required specifications, prior to cutting. In the event that any discrepancies are found, STOP and contact Goodrich Global before proceeding.

We recommend that the wall moisture content does not exceed 4% using a reputable moisture meter, and that active moisture infiltration, condensation, and/or accumulation - particularly in warm, humid climates - is not present. If walls show mould, mildew or visible moisture damage, or if moisture content exceeds recommendations, do not proceed with installation until the condition has been fully corrected under the direction of a qualified professional. Goodrich Global will not be responsible for any performance or quality issues if moisture problems are not addressed before or following installation.

HANGING GUIDELINES

Wallcovering rolls are numbered consecutively and should be cut and installed in reverse sequence, starting with the highest numbered roll. All strips should be hung in sequence as they are cut from the roll, using full widths of material, whenever possible. Install the wallcovering under permanent lighting conditions to evaluate colour and texture uniformity.

When hanging non-reversible or matching patterns, measure the wall height, allowing for pattern match, add 4", and table trim using a straight edge to ensure alignment across seams. Large, dominant pattern repeats require more careful planning as far as starting point, ceiling line, chair rails, door/window headers, etc. Patterns are meant to match at eye level and may run off slightly at the top and bottom of the wall. When hanging textured or random-match patterns, reverse hang alternate strips for a more uniform appearance; overlap and double cut, being careful not to score the wall. If the pattern effect is not acceptable after three strips are hung, re-hang strip #2 without reversing.

If any defect, colour variation, or unacceptable pattern effect is noticeable after three panels are cut and hung, STOP and contact Goodrich Global immediately. Goodrich Global cannot accept any claims on labour or material after more than three lengths have been installed.

ADHESIVE APPLICATION

Apply a uniform coat of a premixed vinyl wallcovering adhesive to the back of the material using a short-napped paint roller or stiff bristle brush (a pasting machine can be used at the installer's discretion). Goodrich WA202 adhesive is recommended for heavyweight vinyl wallcovering. Fold each sheet over and allow up to 10 minutes booking time for the adhesive to penetrate the backing of the lightweight vinyl material (up to 15 minutes for heavyweight vinyl), and to avoid paste drying at the edges.

INSTALLATION

Hang the first strip to a plumb line, overlapping the ceiling and baseboard, within 12 minutes of paste application. Use a stiff bristle brush to ensure that the wallcovering makes contact with the wall. A plastic smoother can also be used on non-metallic Vinyls, providing only light pressure is applied (do not use sharp-edged tools). Smooth from the middle to the outside edges, being careful not to stretch the material, and work out all air bubbles. Trim at the ceiling and baseboard with a sharp razor blade. For matched patterns, butt the second strip to the edge of the first and smooth out firmly. When double cutting non-matching patterns, place a 2-3" wide strip behind the seam to avoid scoring the wall. Flatten seams exerting light pressure with a seam roller. Low-adhesive painter's tape can be used to keep the face of the seams clean. Before applying the next strip, trim the top and bottom as with the first panel, and proceed in the same manner around the room.

Avoid cutting narrow widths of material for placement above doors and below windows. Vertical joints should not occur less than six inches from inside or outside corners. When trimming at chair rails and ceilings, always use a broad knife rather than a straight edge. Take extra care in keeping the adhesive off the face of the wallcovering.

Remove excess adhesive immediately with a natural sponge, frequently rinsed in clear, warm water, and dry with a soft, lint free cloth. After installation, the walls and wallcovering should be monitored for potential moisture or vapour infiltration, which must be promptly eliminated.

MAINTENANCE

Most wallcovering is easily cleaned using clear, warm water and mild soap with a natural sponge. A soft cloth or towel should only be used to tamp dry (do not rub). Stubborn stains can be removed with a laundry spot remover or rubbing alcohol. Do not use solvent-based cleaning agents, lacquer thinners, nail polish remover, pine oil, or cleaning agents containing bleach, which may cause discoloration over time.

Note: The above is intended only as a guideline. Wallcovering installations must conform to current hanging instructions included with each shipment. The installer has final responsibility for proper installation and evaluation of jobsite conditions.



GOODRICH SOLUTIONS
WALLCOVERING
233 | **SAPPHIRE**

**WITH
GOODRICH,**

Your habitat becomes

A gallery of

Your **self-expressions;**

A canvas for

Your **creativity;**

A space for









Your **soul;**

A showcase of

Your **taste for life;**

PREMIERWALL

Stay Connected - www.goodrichglobal.com | info@goodrichglobal.com

 /Goodrich.Global.Singapore  /goodrich_global  /GoodrichGlobal  /GoodrichChina
 /GoodrichGlobal  /goodrichglobal  /GoodrichHQ  /Goodrich_Global

SINGAPORE [HQ] | CHINA | HONG KONG | INDIA | INDONESIA | MALAYSIA | MYANMAR | PHILIPPINES | THAILAND | UNITED ARAB EMIRATES | VIETNAM

