



NEW WALLCOVERING INTRODUCTION

Relic Collection



NEW RELIC COLLECTION

Artisans throughout the world have passed down the intricacies of their craft from generation to generation. Koroseal's Relic Collection is a snapshot of these time-honored techniques and pays homage to the fine craftsmanship and attention to detail that continue to be part of society's cultural fabric.

The designs in this collection celebrate the artistic cultures from around the world as they are inspired by techniques of sculptors, weavers, and fine artists. Explore intricate details and dimensional textures, weaves with depth and beauty, abstract lines representing connectivity, prints inspired by coveted tie-dyeing methods, and authentic color palettes influenced by plants and minerals.



NEW Relic Collection



CHISEL



NIWA



BENGAL



MUDMEE



ENIGMA



The Relic Collection - New from Koroseal



Share



INTRODUCING THE RELIC COLLECTION



koroseal®

Watch on  YouTube

BENGAL

Relic Collection

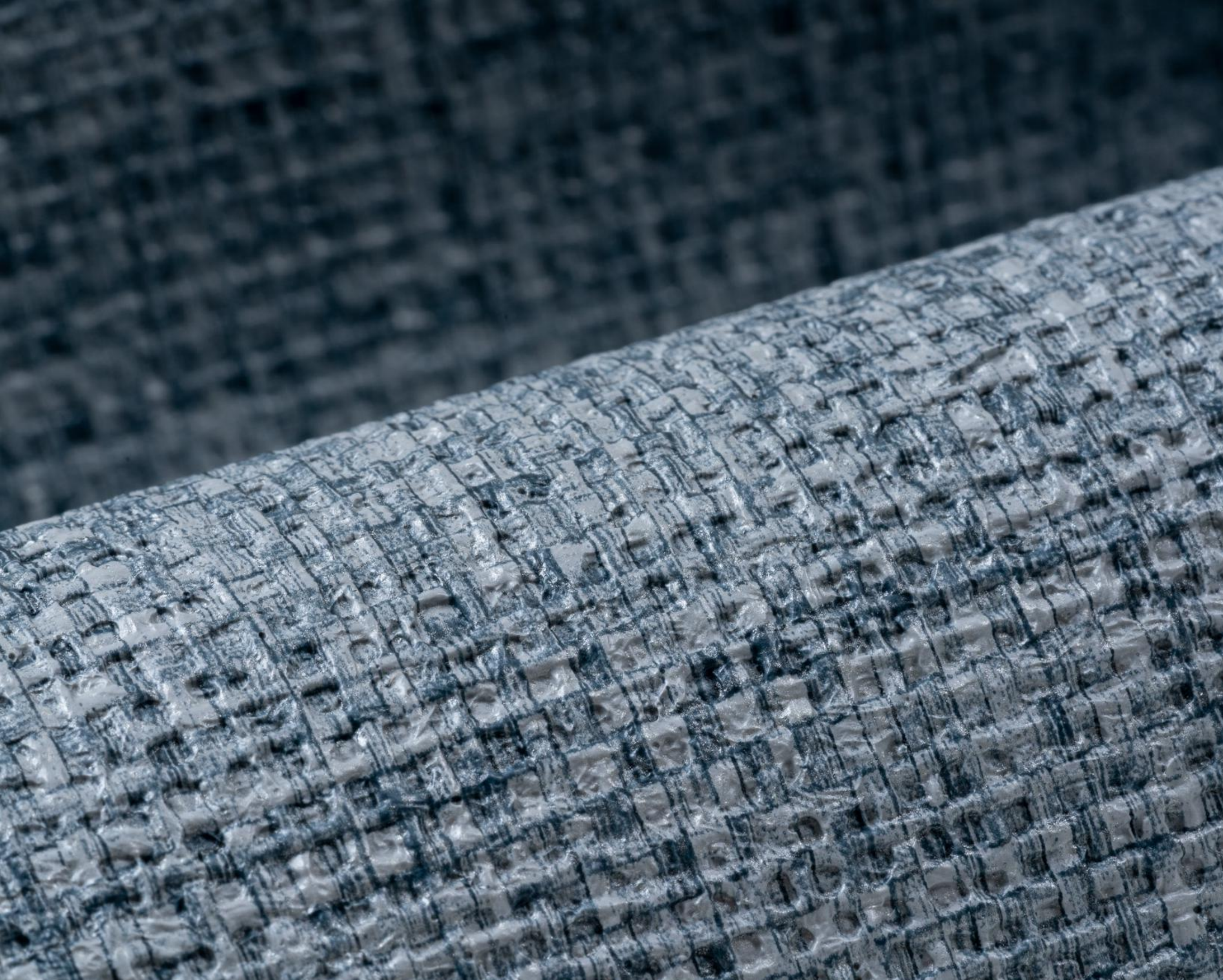
Inspiration

The art of handweaving in Bengal is ancient and often begins with the woven fabrics created by twisting the cotton and silk fibers into yarns. The work and weaving knowledge in India passes from artisan to artisan for many generations stretching back thousands of years. Inspired by the elder villages in West Bengal, our new design, Bengal, aims to capture the same enhanced texture, depth, and character of their handcrafted weaves.

[Back to Menu](#)









BENGAL

Relic Collection

Bengal is a chunky weave created by the depth of the emboss and enhanced by a cross woven print. The color palette is spun from the origins of the yarns in silky whites, soft muted pastels, and moody contemporary dark tones. Enjoy the true neutral tones of this handloom inspired pattern from the threads of a cultural heritage.

BENGAL

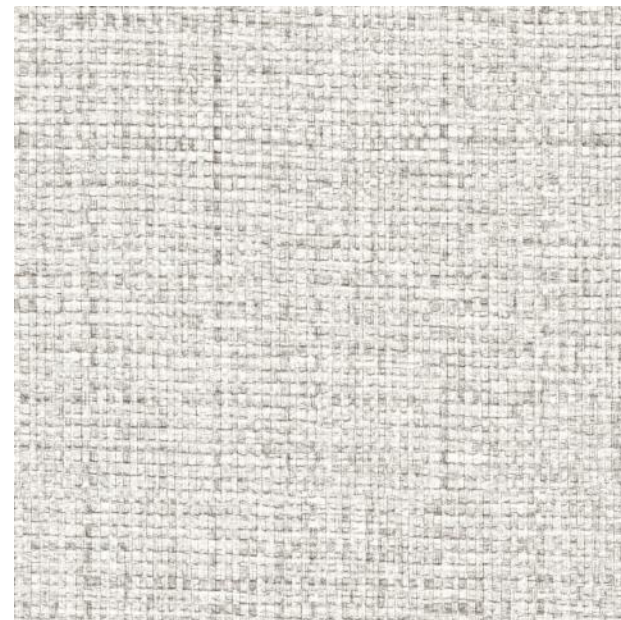
Relic Collection



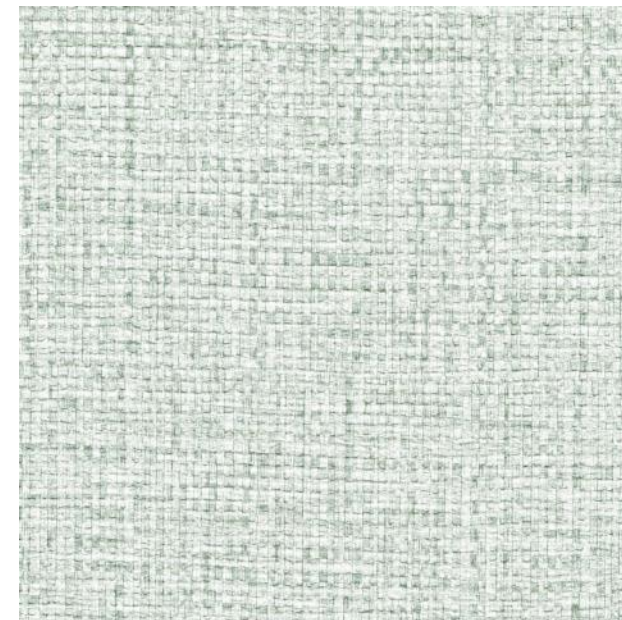
BE21-01 Origin



BE21-02 Silk



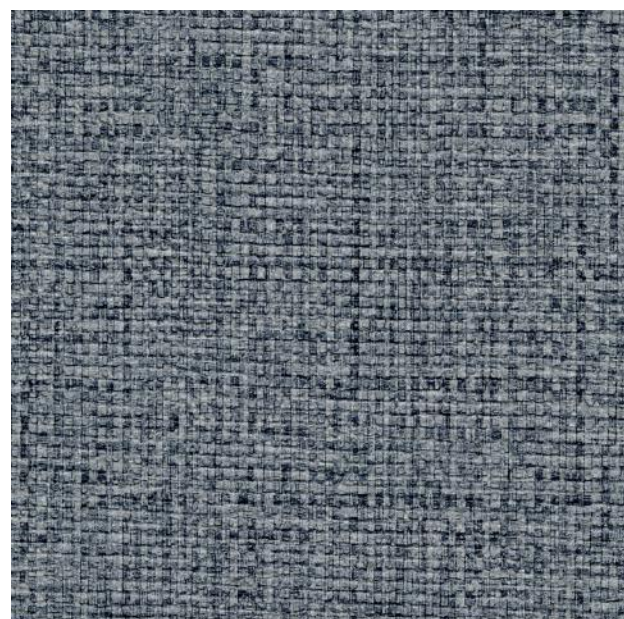
BE21-03 Muslin



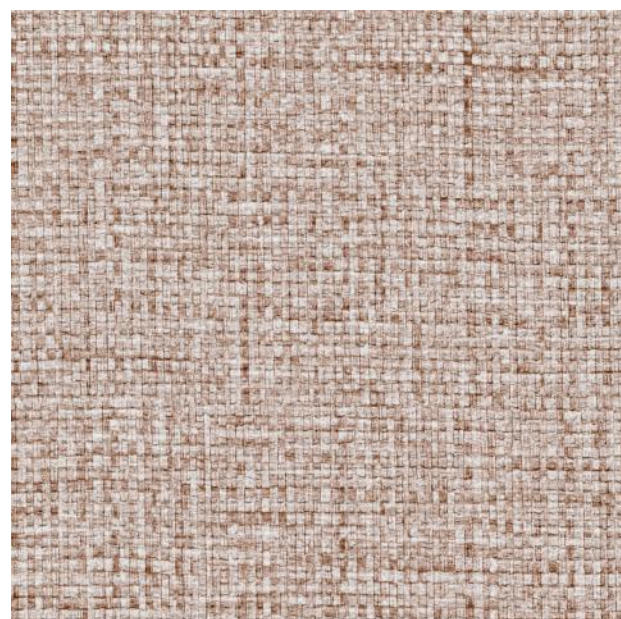
BE21-04 Yarn



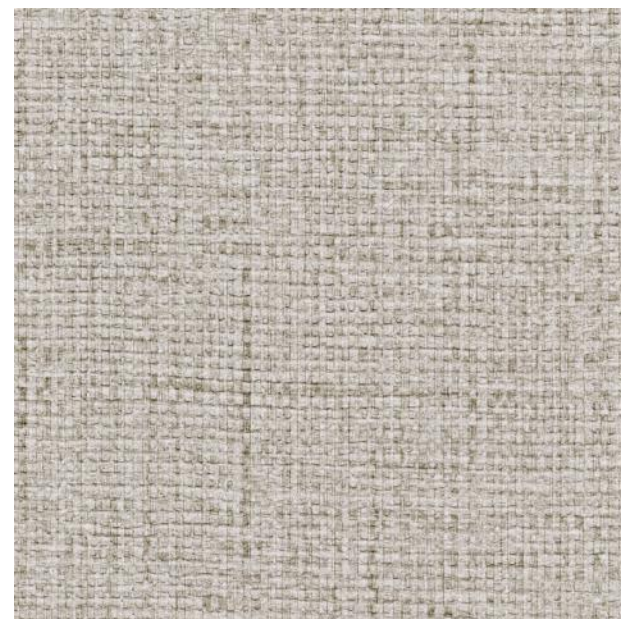
BE21-05 Stit



BE21-10 Handloom



BE21-11 Weaver



BE21-12 Linen



BE21-13 Threads



BE21-14 Cro

Click on a colorway for more product information or to request free samples.



ch



BE21-06 Artisan



BE21-07 Cotton



BE21-08 Cloth



BE21-09 Heritage



ftsmanship



BE21-15 Contemporary

CHISEL

Relic Collection

Inspiration

Inspired by the vaulted shape of the architecture and sculpture of Europe, Chisel resembles the texture and craftsmanship from an artisan's tools and hand modeled surfaces. It's curves within the lines of a soft geometric create a dimensional luminous light, reflective of the open architecture.









CHISEL

Relic Collection

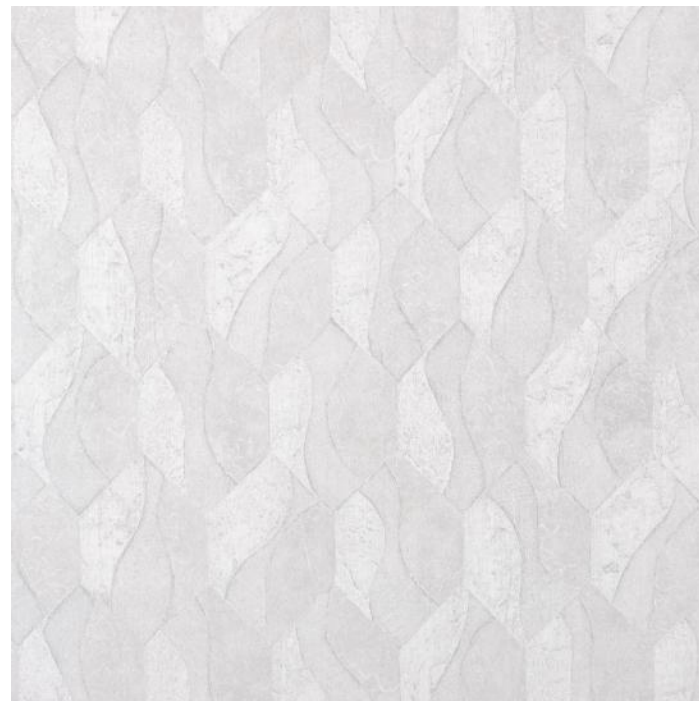
Chisel, a sculptural, modern design takes shape in the tile like geometry of repeating organic form. It comes to us from the true influence of the European Masters expression of craft. Each shape contains a unique curved segmentation with a textural softening of the tile's depth and line. The color resembles the natural tones of being sculpted in stone like alabaster and limestone. The hues represent those of the architectural surroundings of the design's European origin.

CHISEL

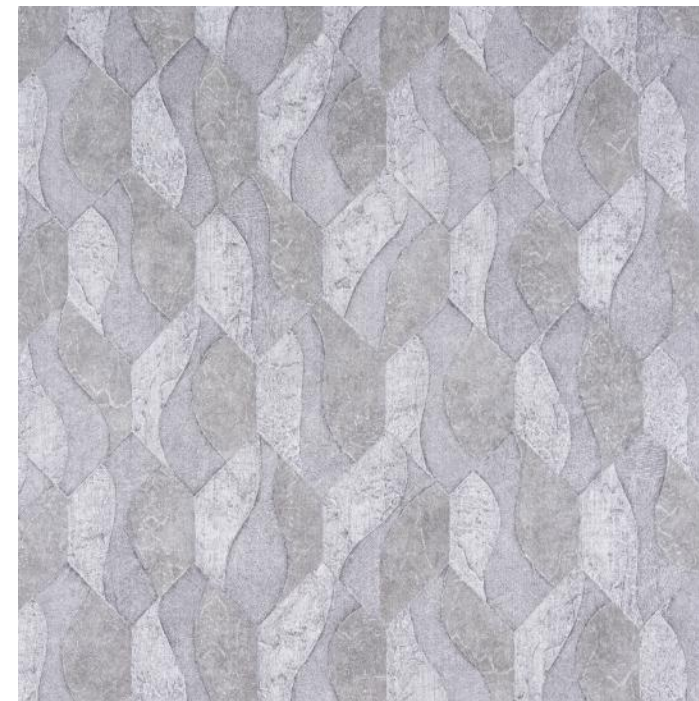
Relic Collection



CH21-01 Lapis



CH21-02 Alabaster



CH21-03 Sculpted



CH21-06



CH21-09 Aragonite



CH21-10 Limestone



CH21-11 Terracotta



CH21-13

Click on a colorway for more product information or to request free samples.



Agate



CH21-07 Soapstone



CH21-08 Carved



Verdigris

MUDMEE

Relic Collection

Inspiration

Originating from Northeast Thailand, the word “Mudmee” is often translated to mean “tie-dye” or “tied threads.” This special version of tie-dye is a highly coveted process; details of this technique are kept secret to preserve the culture and practice within the community that creates these beautiful designs. Our version of Mudmee is in keeping with these time-honored techniques, as it uses aspects from tie-dye forms which creates a multitude of different shapes and patterns.









MUDMEE

Relic Collection

Mudmee is a modern version of a medium-scale, geometric pattern in the form of tie-dye shapes. It can also be seen as a present-day interpretation of a damask. Mudmee's colors are inspired by hues crafted through natural dying techniques using plants and minerals to tint the substrate. The colors incorporate these ancient techniques to create a beautiful, natural story. They range from whites and creams, like Cottonwood and Sea Salt, soft metals in warm and cool neutrals, as shown in Moonstone and Mountain Alder, and calming shades of blues and greens, as used in Nettle and Lapis. The Mudmee design has a perfect companion pattern called Enigma, a beautiful overall fibrous texture.

MUDMEE

Relic Collection



MU21-01 Cottonwood



MU21-02 Sea Salt



MU21-03 Limonite



MU21-05



MU21-13 Moonstone



MU21-14 Nettle



MU21-15 Spruce



MU21-16

Click on a colorway for more product information or to request free samples.



5 Mountain Alder



MU21-07 Tea Tree



MU21-10 Alum



6 Lapis

MUDMEE & ENIGMA *COORDINATING DESIGNS*

Relic Collection







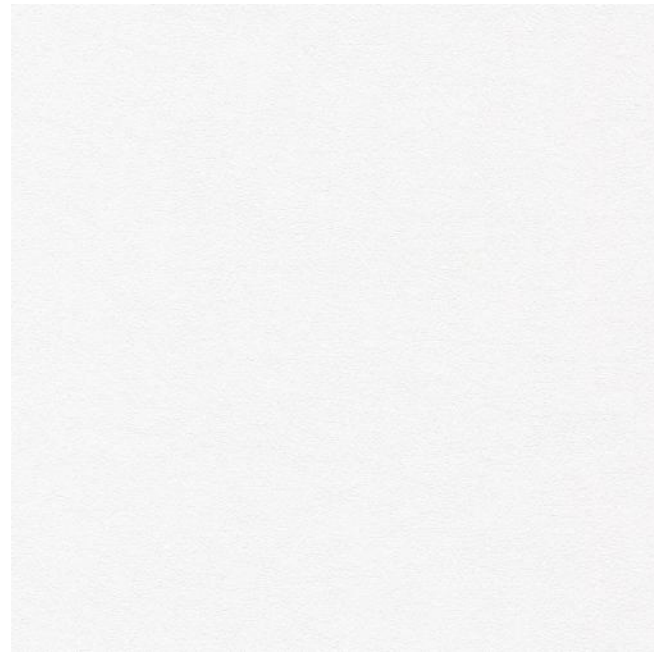


ENIGMA

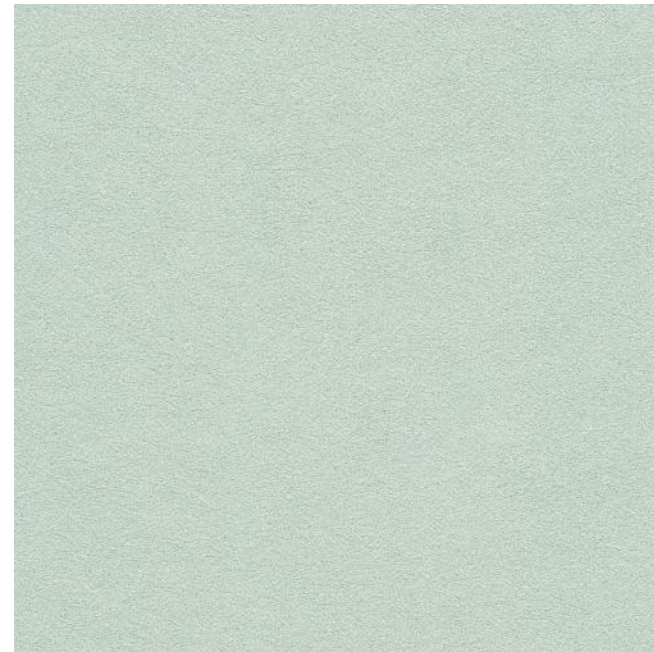
Relic Collection

Enigma is an existing pattern that was recolored to coordinate with Mudmee. Enigma is an organic texture combined with luxury and luster; an impression of woven fibers made from natural materials. The colors in Enigma directly coordinate with Mudmee. Offerings include both light and darker companions. The color range includes both warm and cool whites, mineral and plant tones, to earth, water, and sky shades.

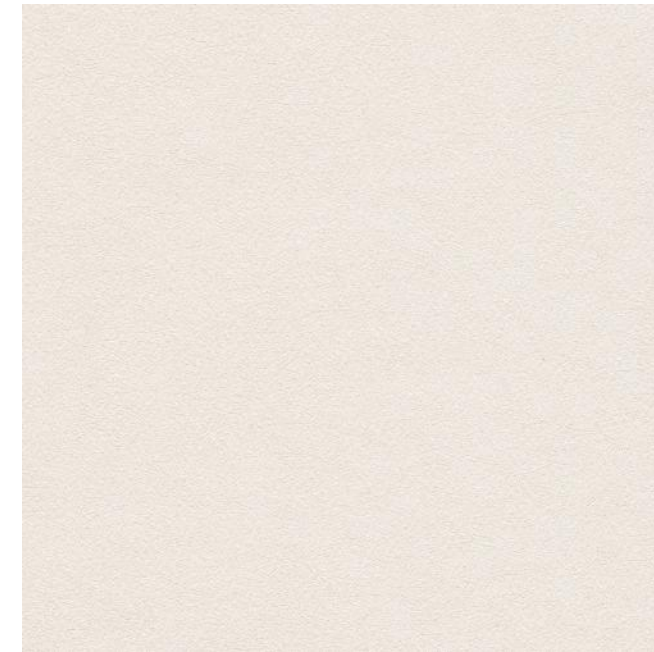
ENIGMA
Relic Collection



E922-01 Snowy



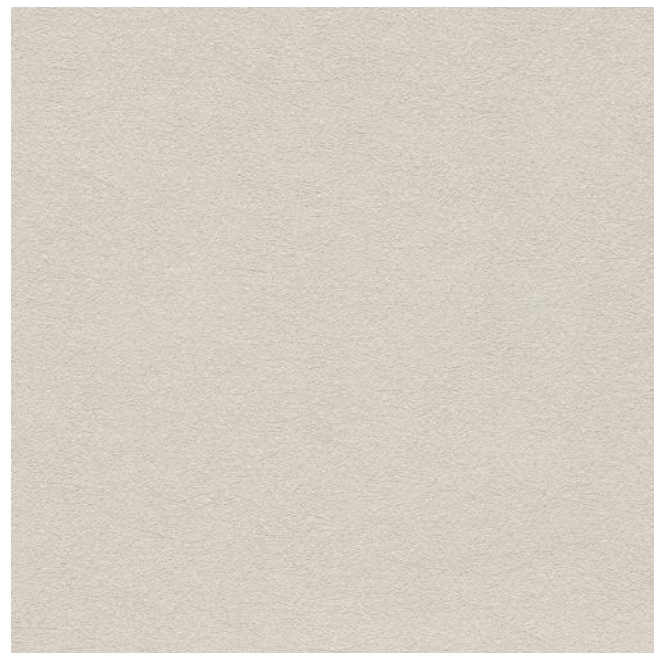
E922-02 Spring Mint



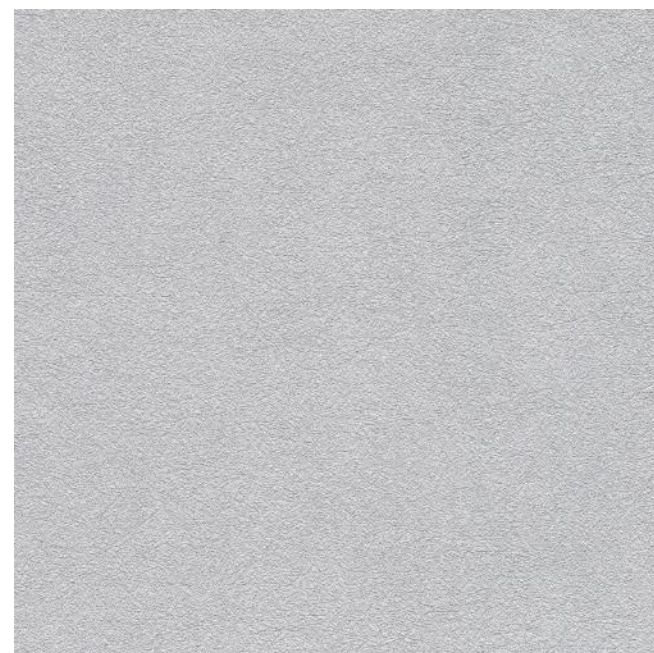
E922-03 Frost



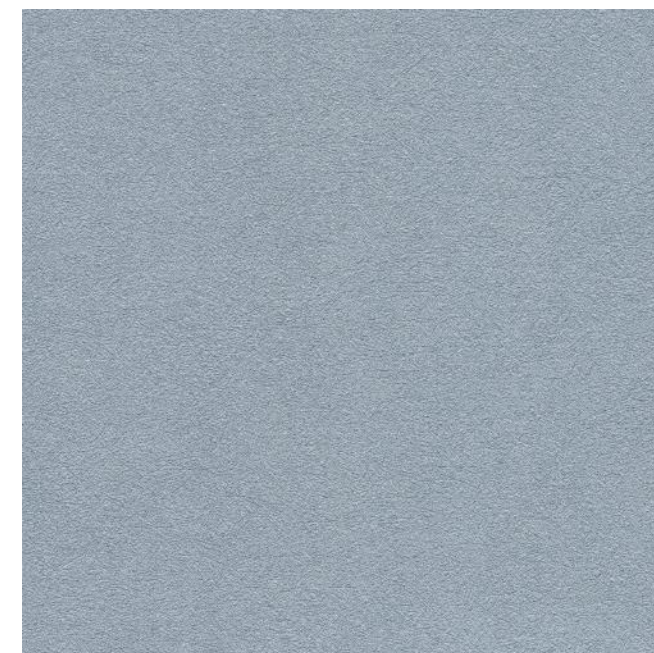
E922-04



E922-07 Jute



E922-08 Shale



E922-09 Lake

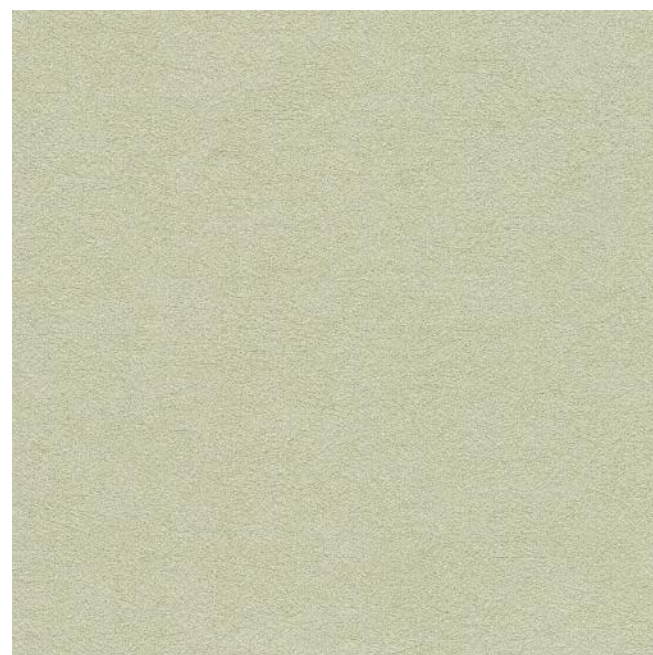


E922-10

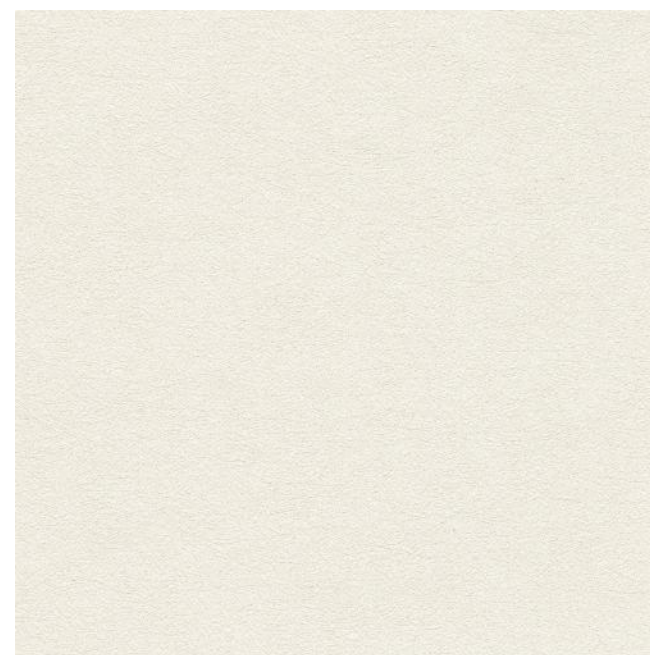
Click on a colorway for more product information or to request free samples.



Sorrel



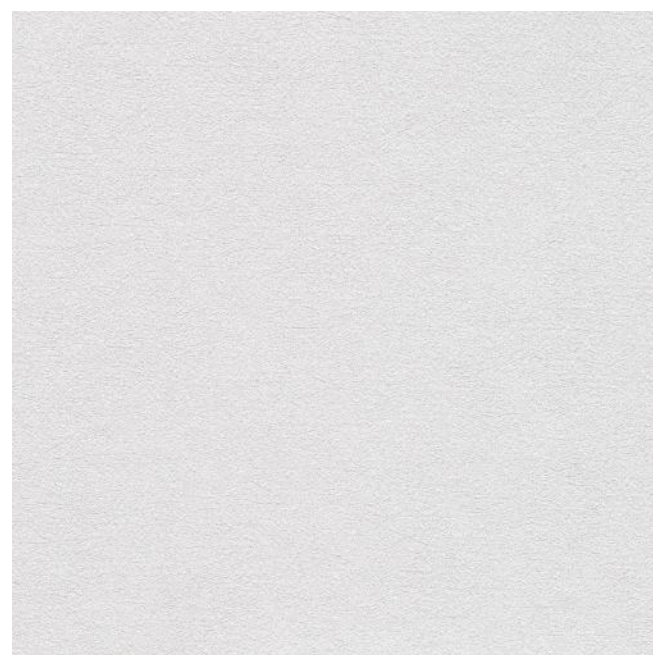
E922-05 Larkspur



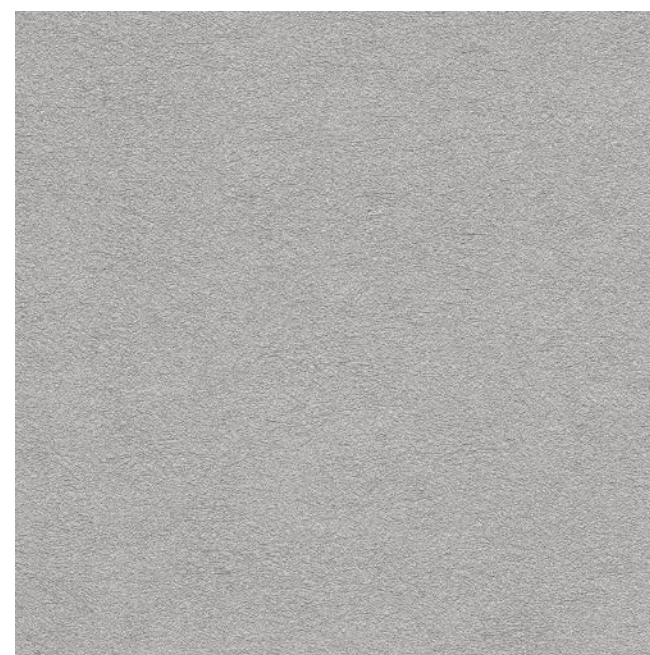
E922-06 Flax



Alabaster



E922-11 Mica



E922-91 Aluminum

NIWA
Relic Collection

Inspiration

Niwa is inspired by the elements of a Zen Garden and opening our eyes to the earthen gifts surrounding us. Meditation to the soft music of a stringed instrument while watching the tall grasses cross with each other in a light breeze. Finding harmony in the repetition and angles of a raked garden. Enjoying a cup of tea while we breathe and experience the support of a modern structure. Feeling the sun's warmth absorbed in the sanded texture.

[Back to Menu](#)









NIWA

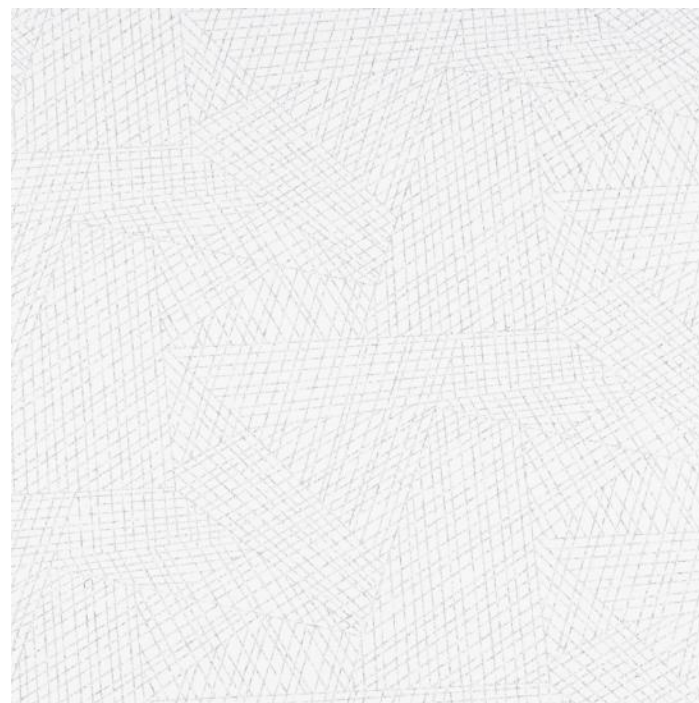
Relic Collection

Niwa translated from Japanese, meaning "garden" has a softened modern appeal. Created by the crossing repetitions of lines representing connectivity and a sanded surface texture this design emulates a dry garden. The design elements encompass the meditative art forms of the culture. The color line speaks to the shades within the garden design. Bonsai, Pagoda, and Stone speak to the foundation of the garden while Boxwood, Japanese Maple, and Water Basin are influenced by the shades of the living form and flow within the balance of the natural form.

NIWA
Relic Collection



NW21-01 Water Basin



NW21-02 Stone



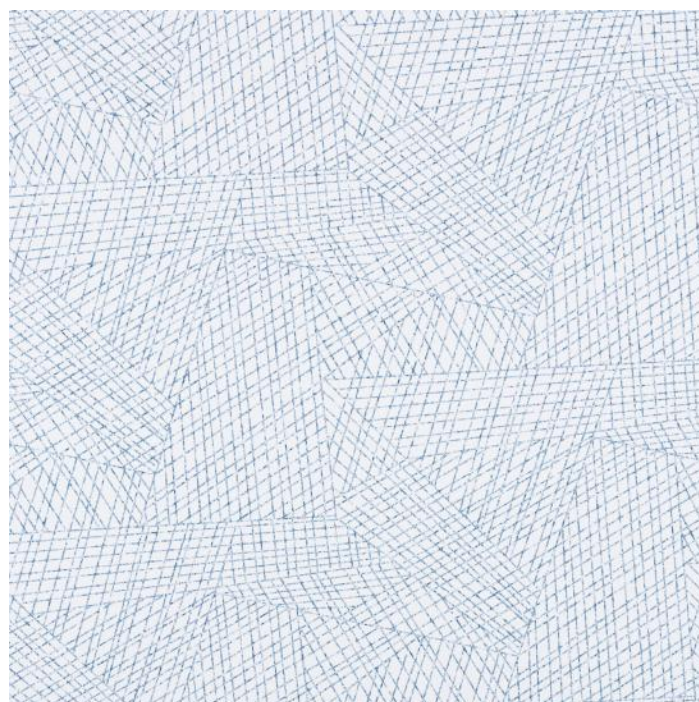
NW21-03 Sand



NW21-04



NW21-09 Japanese Maple



NW21-11 Stream



NW21-13 Dry Garden

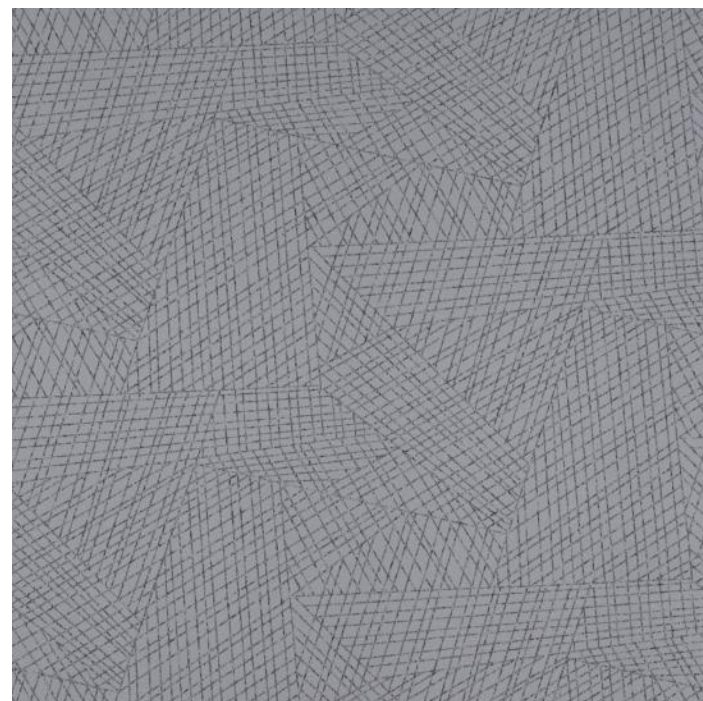


NW21-14

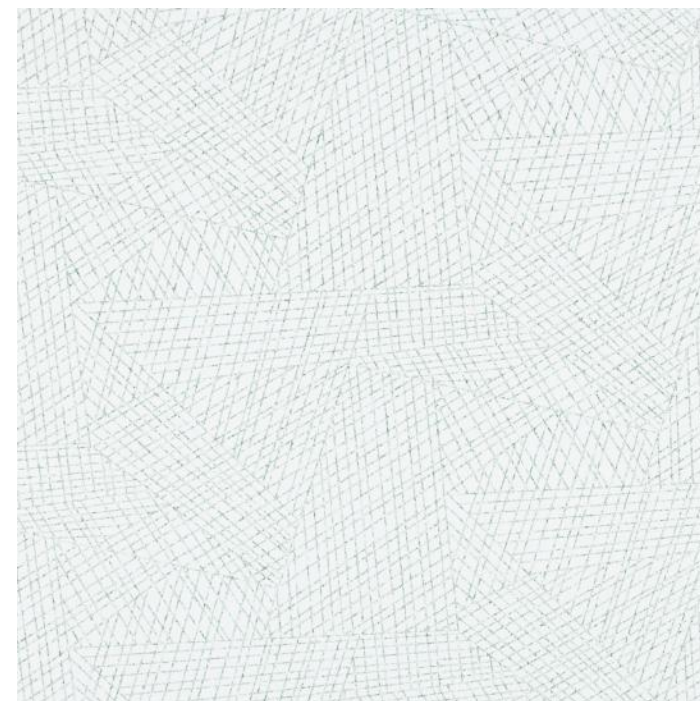
Click on a colorway for more product information or to request free samples.



4 Bonsai



NW21-06 Rock



NW21-07 Boxwood



4 Pagoda

Spark Your Creativity with Koroseal's Infinite Design Solutions.



koroseal®

855.753.5474 | koroseal.com

