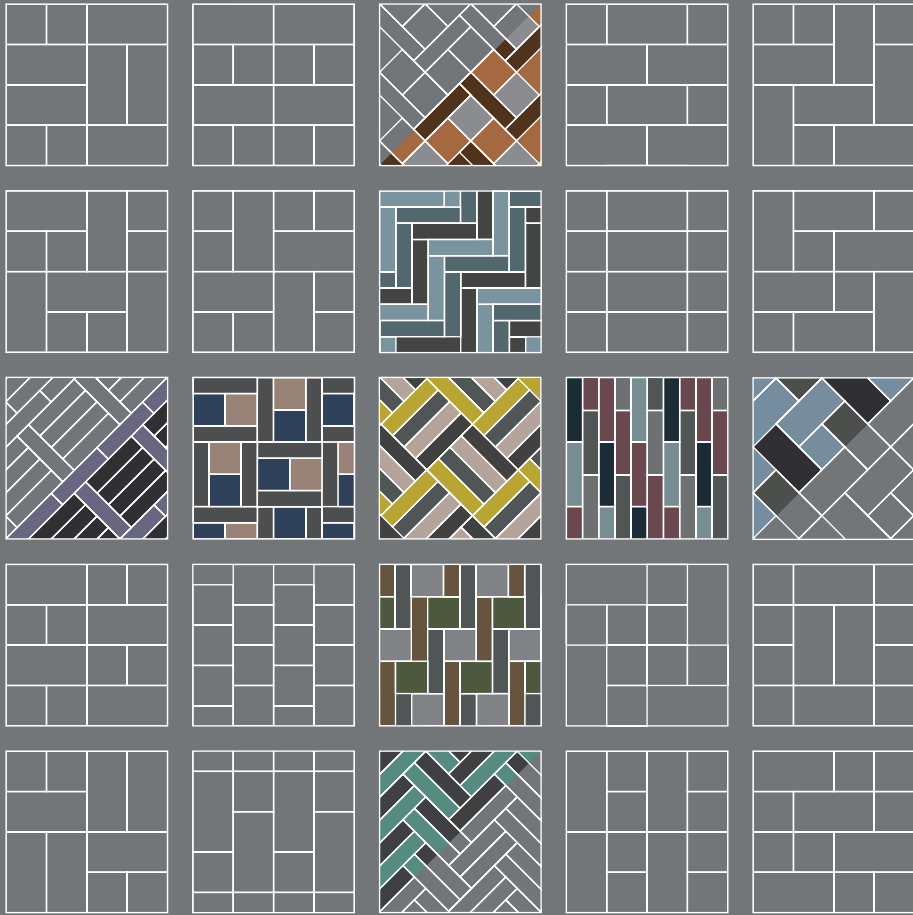


# MÉLANGE

Simple & Sophisticated



LOOM<sup>+</sup>

WOVEN DESIGN FLOORING



# LOOM<sup>+</sup> DIFFERENCE

DESIGN AND TECHNOLOGY  
ARE WOVEN TOGETHER

## Better Floor

The tangible textile feeling of M<sup>é</sup>lange collection closely resembles the original material while exhibiting far superior qualities



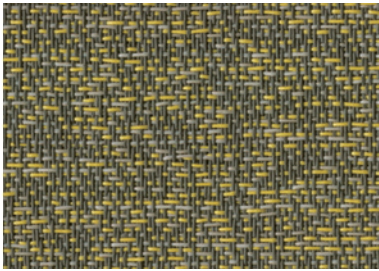
LOOM+  
DIFFERENCE

## Distinguished NOX EMT™ Core Structure

The first woven flooring with proven NOX EMT™ Core structure that ensures the most stable and durable installation.

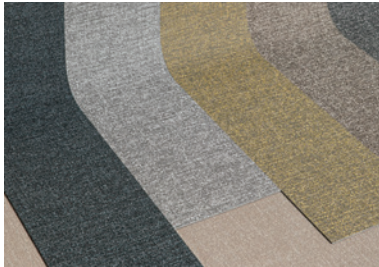
# LOOM+ DESIGN

## PLAY with COLOR, SIZE and TEXTURE



### Profound Color Composition

Realizing multiple tones of color - carefully selected by artists - we provide you with very unique colors that express LOOM+ in harmony with surrounding interiors.



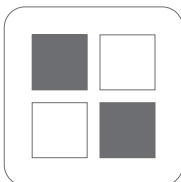
### Infinite array of color and texture

Available in myriad colors covering diverse tones like neutral, cool, warm, light and dark tones, we give you unique design patterns.



### Designed for mix & match

Creative and unique 'mix & match' only by LOOM+ is realized by introducing the same weaving system to various design patterns.



50x50cm  
Tile size



25x100cm  
Plank size

### Optimal 2 Size variation

With our unique 2 module sizes of 50cmx50cm and 25cmx100cm, the first introduced in woven flooring market, you can elevate flat environments to inspiring interior spaces.

# LOOM+ TECHNOLOGY

## PROVEN INNOVATION



### Distinguished NOX EMT™ Core Structure

NOX EMT™ Core structure featured with innovative functionality and safety, proven in more than 50 countries over 20 years



#### Clean & Hygienic (Anti-Microbial)



- + The first & only in woven flooring with NOX EPT™ Shield treatment (Anti-Bacterial and Anti-Fungal coating system validated by UL)
- + Strong enough for heavy commercial use

#### Dimensional Stability & Consistent Thickness



- + The most reliable NOX EMT™ Core structure
- + Consistent product thickness by patterns for mix & match with different patterns

#### Fray-Proof



- + Clean-cut finishing for preventing fraying even when cutting tiles during installation



#### Safe

Certified non-toxic, phthalate-free, and fiberglass-free fabric



#### Quick

Quick and easy loose lay® installation without glue



#### Easy

Minimal cleaning time and low maintenance



#### Silent & Soft

Soft surface absorbing sound



#### Non-Slip

Slip-resistance with woven fabric surface



#### Colorfast

Colorfast properties retain gorgeous original colors over time

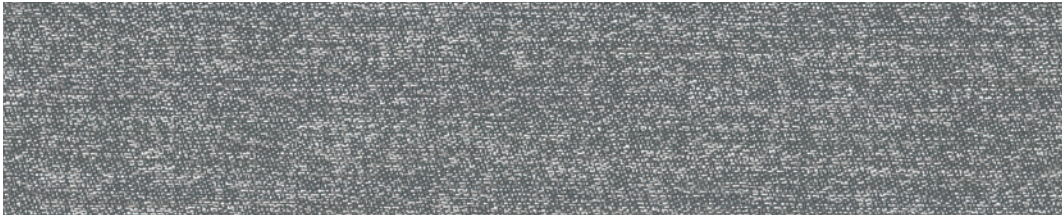
# MÉLANGE

Simple & Sophisticated

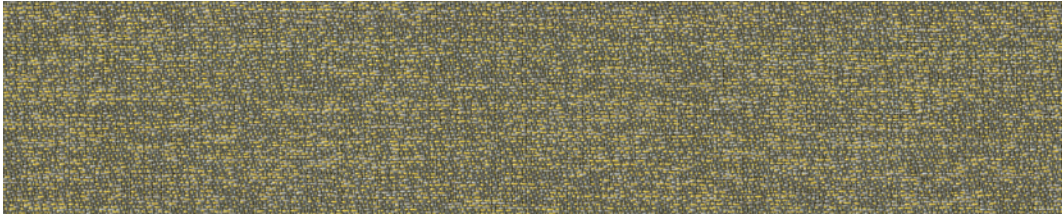
NOX Mélange collection offers a true extent of nature's tree bark or dry soil. This softly rich pattern is a disordered mixture of similar shades, maximizing LOOM<sup>+</sup> mix & match possibilities in well-matched and diversified color blends.

Enrich your space with LOOM<sup>+</sup> Mélange, an earthy collection that adds a simple yet ultimate essence of sophistication.





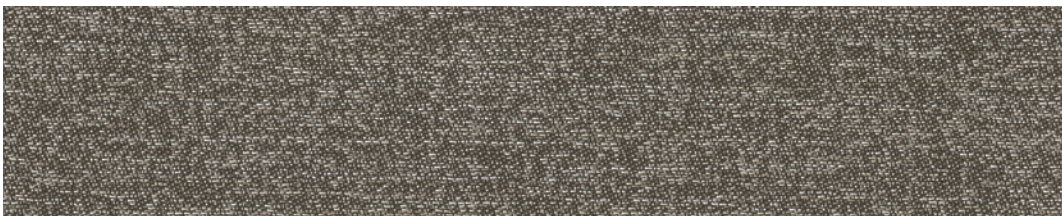
FQ-2601



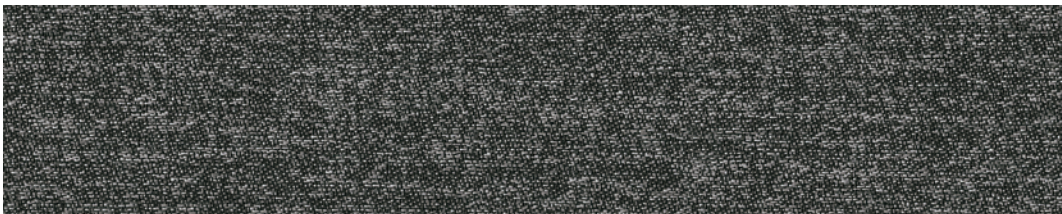
FQ-2602



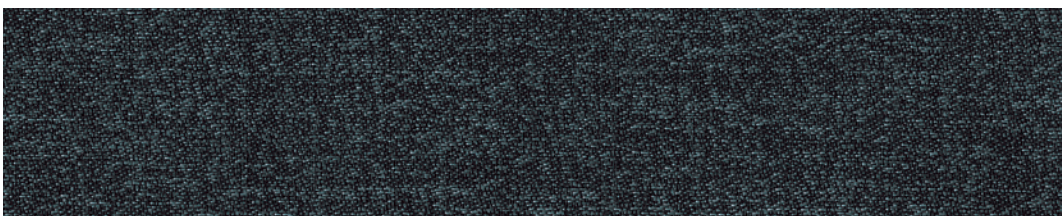
FQ-2603



FQ-2604



FQ-2605



FQ-2606

Reinvent Spaces with

# LOOM<sup>+</sup> PLAY!

All work together in any combination, giving you the freedom to create your own design by mixing & matching different patterns and colors in 2 size variations.

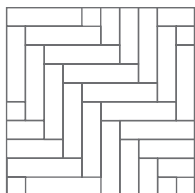


50x50cm

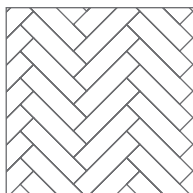


25x100cm

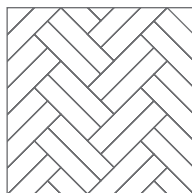
## NEW LOOM<sup>+</sup> PLAY!



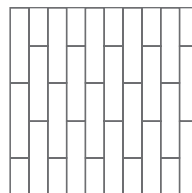
LOOM PLAY #21



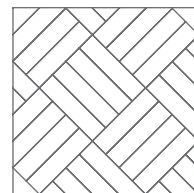
LOOM PLAY #22



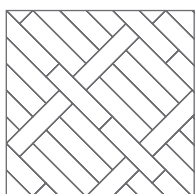
LOOM PLAY #23



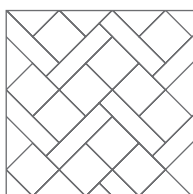
LOOM PLAY #24



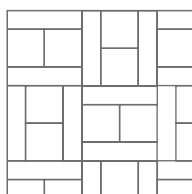
LOOM PLAY #25



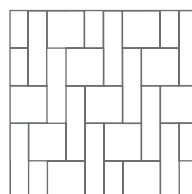
LOOM PLAY #26



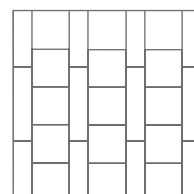
LOOM PLAY #27



LOOM PLAY #28



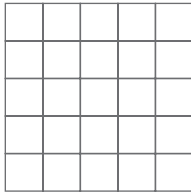
LOOM PLAY #29



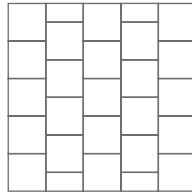
LOOM PLAY #30



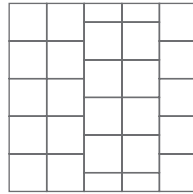
## INSTALLATION CONCEPT GUIDE



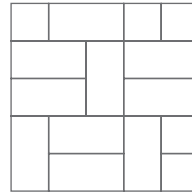
LOOM PLAY #1



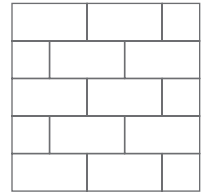
LOOM PLAY #2



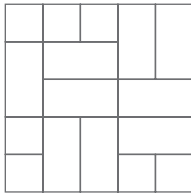
LOOM PLAY #3



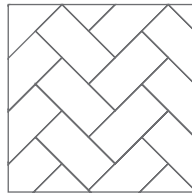
LOOM PLAY #4



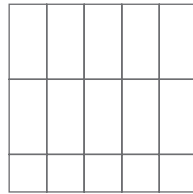
LOOM PLAY #5



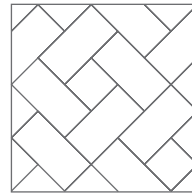
LOOM PLAY #6



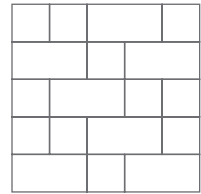
LOOM PLAY #7



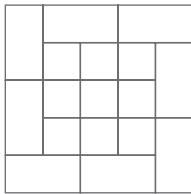
LOOM PLAY #8



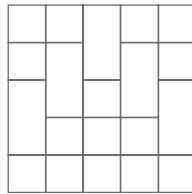
LOOM PLAY #9



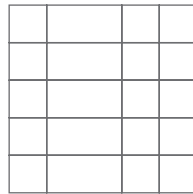
LOOM PLAY #10



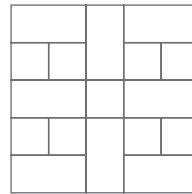
LOOM PLAY #11



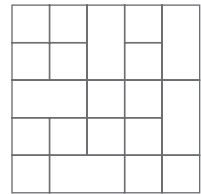
LOOM PLAY #12



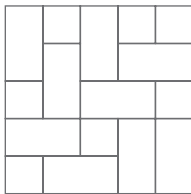
LOOM PLAY #13



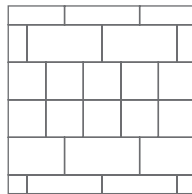
LOOM PLAY #14



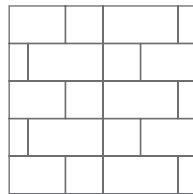
LOOM PLAY #15



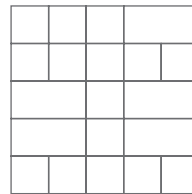
LOOM PLAY #16



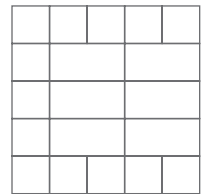
LOOM PLAY #17



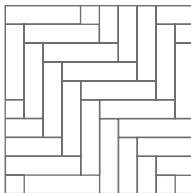
LOOM PLAY #18



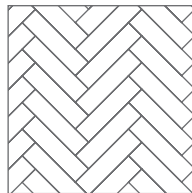
LOOM PLAY #19



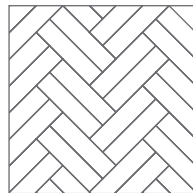
LOOM PLAY #20



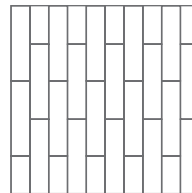
LOOM PLAY #21



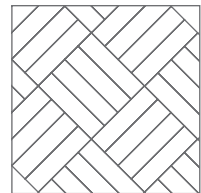
LOOM PLAY #22



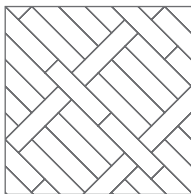
LOOM PLAY #23



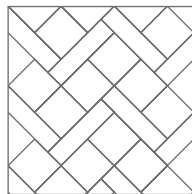
LOOM PLAY #24



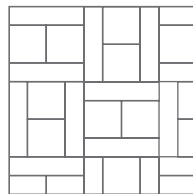
LOOM PLAY #25



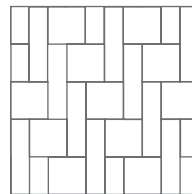
LOOM PLAY #26



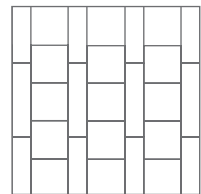
LOOM PLAY #27



LOOM PLAY #28



LOOM PLAY #29

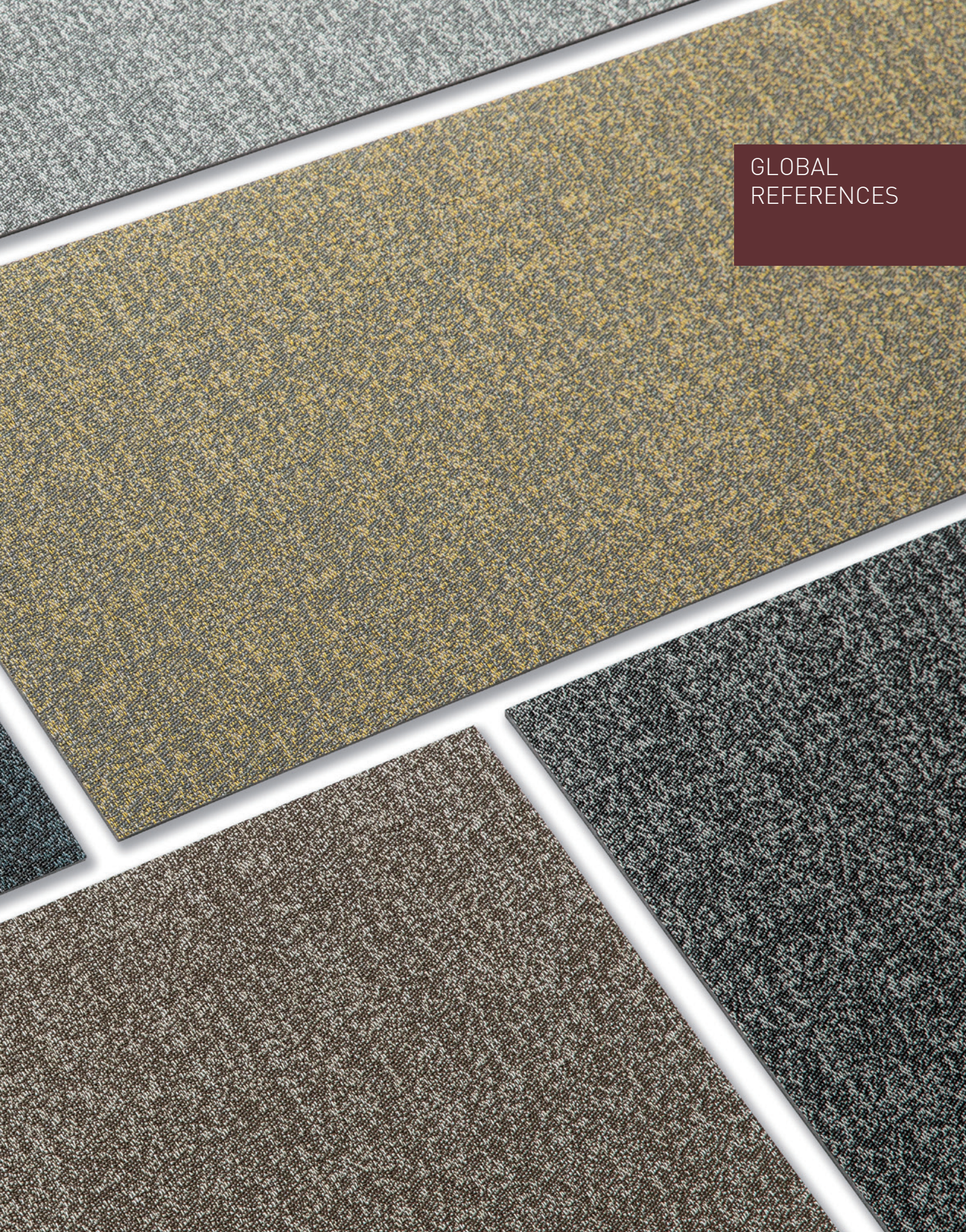


LOOM PLAY #30



**LOOM<sup>+</sup>**  
**CREATE**  
**YOUR OWN DESIGN**

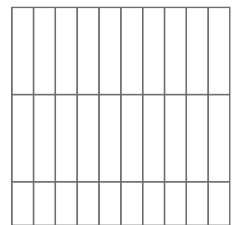
GLOBAL  
REFERENCES



# Restaurant



FQ-2601 FQ-2603  
FQ-2604 FQ-2606

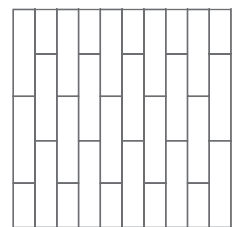


LOOM PLAY #08

## Hospitality



FQ-2603 FQ-2604  
FQ-2606

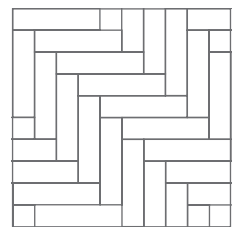


LOOM PLAY #24

Retail shop



FQ-2601 FQ-2606



LOOM PLAY #21

## Healthcare



LOOM+ fray-proof lets you freely cut out the tiles in any creative forms.

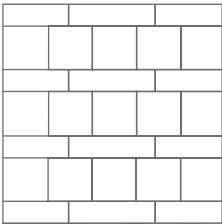


FQ-2601 FQ-2602 FQ-2603  
FQ-2604 FQ-2606

Education & Libraries



FQ-2601 FQ-2602  
FQ-2605 FQ-2606



LOOM PLAY #30



Corporate

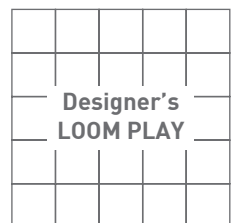


FQ-2603 FQ-2604  
FQ-2605

## Sports Center



FQ-2601 FQ-2602  
FQ-2606














# TECHNICAL INFORMATION

## 1. Size & Packing

Size(mm)	Thickness(mm)	Pcs/Box	m'/Box	Kg/m'
500x500	3	16 pcs/box	4 m'	5.0
	5	10 pcs/box	2.5m'	8.2
250x1000	3	16 pcs/box	4 m'	5.0
	5	10 pcs/box	2.5m'	8.2

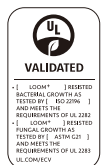
## 2. Test Result

Test Item		Standard	LOOM <sup>+</sup>
Level of use		EN 685	33
Fraying		EN 1814	Frayproof
Thermal resistance		ISO 8302	0.02m²K/W
Castor chair resistance		EN 985	No damage
Dimensional stability		ISO 23999 EN 986	≤ 0.10% ( Norm: ≤ 0.25% ) Passed
Fire resistance		EN 13501-1	Bfl -s1
Indoor air quality			Low VOC (floor score certified)
Underfloor heating		EN 12524	Suitable
Light fastness		ISO 105-B02	≥ 6
Slip resistance		DIN 51130 EN 13893	R11 DS
Flexibility		ISO 24344	Passed
Impact sound insulation		ISO 10140-3	9dB
Body Voltage		EN 1815	≤ 2KV
Squareness & Straightness		ISO 24342 ASTM F2055	No deviation ≤ 0.01 in
Residual indentation		ISO 24343-1 ASTM F1914	≤ 0.1mm < 8%
Resistance to chemicals		ISO 26987 ASTM F925	No Defects No Defects

## 3. Caution

Condition in at least 19°C or the normal temperature of the room where the product is to be laid, for at least 48 hours before installing. Cartons must be stacked less than 5 high and tiles removed 30 minutes before use. The site conditions must be maintained during installation and for at least 48 hours after completion. NOX Corporation will not accept claims where these instructions have not been followed.

## 4. Certificate



Please visit [www.noxglobal.com](http://www.noxglobal.com) for detailed installation / maintenance guides and technical information.

Reinventing Spaces



WOVEN DESIGN FLOORING

Designed and Manufactured by NOX Corporation

**Design Center & Office**

KD Center, 355, Hyoryeong-ro, Seocho-gu, Seoul, 06643 Korea  
Tel +82-2-520-7600  
Fax +82-2-598-9674  
www.noxglobal.com  
E-mail info@noxglobal.com

**NOX Corp. | KOREA**

Shinho Factory  
Shinho 2nd Factory, Yedang  
Enbo Factory  
Godeok Factory  
Bongsan Factory  
Deoksan Factory  
Nox Exterior Factory

**NOX US | USA**

NOX US  
P.O. Box 824  
931 S. Springville Avenue  
Fostoria, OH 44830  
Office +01-419-701-5060  
Fax +01-419-701-5058

**NOX ASEAN | VIETNAM**

NOX ASEAN  
Road NO.8, Nhon Trach 6 Ip, Dong Nai, Vietnam  
Office +084-251-3684244  
Fax +084-251-3684255