



Goodrich Global  
SINCE 1983

# PHILLIP JEFFRIES

SPRING | 2020

# SCULPTED WOOD

— 2620 CUBISM



pg 3 | SPLASH

pg 5 | METROPOLITAN MARBLE

pg 9 | TERRAZZO

pg 11 | STREAMLINED

pg 12 | SILKY STRINGS - ANTHOLOGY

pg 13 | GOLD COAST SILK

pg 17 | NEWPORT THREADS

pg 21 | STONWASHED LINEN

pg 23 | AMAGANSETT WEAVE

pg 24 | COUTURE WEAVE

pg 25 | MAX'S METALLIC RAFFIA II

pg 27 | DECO HEMP

pg 31 | VINYL MIRROR MIRROR II

pg 33 | VINYL SUNLIT SILK

pg 34 | VINYL LONDON LINENS

pg 35 | VINYL LEO'S LUXE LINENS II

pg 36 | VINYL CROCODILE CLUTCH

pg 37 | VINYL MARQUEE SILK

pg 39 | MODERN MOON

pg 40 | YACHT CLUB II

pg 43 | SCULPTED WOOD

pg 45 | MIST

pg 47 | TOOLS

pg 49 | INSTALLS

pg 71 | BINDER GUIDE

pg 89 | PRICING



Our newest collection, Art Decade, seeks inspiration from the electrifying energy and playful attitude of the Art Deco movement. American glitz and glamour is on display as we reimagine one of the most popular and enduring design periods in history. These geometric shapes, clean lines and shimmering surfaces remain as fresh and chic today as they were a century ago.

**SPRING 2020**

---



**HOUSE OF NATURALS**

Deco Hemp - 8 Colors  
Max's Metallic Raffia II - 9 NEW Colors / 16 Total



**SIMPLY SEAMLESS**

Amagansett Weave - 15 Colors  
Couture Weave - 9 Colors



**TAILORED WALLS**

Gold Coast Silk - 9 Colors  
Newport Threads - 7 Colors  
Silky Strings: Anthology - 9 NEW Colors / 22 Total  
Stonewashed Linen - 13 Colors  
Streamlined - 12 Colors



**ARTISANS GUILD**

Metropolitan Marble - 6 Colors  
Sculpted Wood - 10 Colors  
Terrazzo - 7 Colors  
Yacht Club II - 8 NEW Colors / 14 Total



**GALLERY**

Mist - 7 Colors  
Splash - 8 Colors



**PJ PRINTS**

Modern Moon - 9 Colors



**PJ CONTRACT**

Vinyl Crocodile Clutch - 12 Colors  
Vinyl Leo's Luxe Linens II - 13 Colors  
Vinyl London Linens - 7 Colors  
Vinyl Marquee Silk - 24 Colors  
Vinyl Mirror Mirror II - 9 NEW Colors / 14 Total  
Vinyl Sunlit Silk - 13 Colors

— 2461 ABSTRACT NIGHT  
ON WHITE JAPANESE PAPER WEAVE







# SPLASH

**GRAPHIC ART** - Inspire the next art movement with free-flowing brushstrokes, abstract paint splatter and drips for a large scale graffiti-inspired design.

**ARTISTRY MEETS INNOVATION** - Digitally printed on a variety of grounds such as Manila Hemp and Japanese Paper Weave, as well as vinyl interpretations. Digital design mixes old-world craftsmanship with new-world technology.

**COLORS:** 8

**BINDER:** Gallery

**PANEL REPEAT:** 2458-2461: 8 panels  
2462-2465: 6 panels

**MINIMUM:** 2458-2461: 4 panels  
2462-2465: 3 panels

**ORDER INCREMENTS:** 1 panel

**PANEL SIZE:** Height 134" (340.4 cm) Untrimmed  
Trim pattern to wall height

**WIDTH:** 2458-2461: 36" (91.4 cm) Untrimmed / Trims to 33" (83.8 cm)  
2462-2465: 54" (137 cm) Untrimmed / Trims to 44" (111.7 cm)

**STOCK:** Made to Order

**BACKING:** 2458-2461: High Quality Paper  
2462-2465: Non-Woven

**CLEANING CODE:** Wipe Gently

**PART OF THE PJ MASH-UP PROGRAM**





# METROPOLITAN MARBLE

**GRAND STEPS** - Elegant marble flooring inspires this chic interpretation of inlaid stone, where geometric lines pair with an organic texture for an architectural look.

**HANDCRAFTED** - Non-woven paper is cut into squares and colored using a special marbleizing technique that encompasses matte and shimmering inks. Separately, metallic paper is slit into strips to create the patterns' grid lines. These paper strips are applied to the marbled squares to create the overall deco pattern. Squares are then laminated atop a non-woven ground and finished with a second application of longer vertical and horizontal grid lines for a dramatic inlay effect.

**COLORS:** 6

**BINDER:** Artisans Guild

**STOCK:** NJ, USA

**BOLT SIZE:** 12 yds (11 m)

**MINIMUM:** 12 yds (11 m)

**ORDER INCREMENTS:** 4 yds (3.6 m)  
Cut Bolts Available

**WIDTH:** 36" (91.4 cm) Pre-trimmed

**BACKING:** Non-Woven

**CLEANING CODE:** Wipe Gently





— 7946 MINERAL TAUPE

REPEAT: 36" (91.4 CM) V x 36" (91.4 CM) H









# HOW IT'S MADE

## - METROPOLITAN MARBLE -

Non-woven paper is cut into squares and colored using a special marbling technique that encompasses matte and shimmering inks.

Separately, metallic paper is slit into strips to create the patterns' grid lines. These paper strips are applied to the marbled squares to create the overall deco pattern.

Squares are then laminated atop a non-woven ground and finished with a second application of longer vertical and horizontal grid lines for a dramatic inlay effect.

○ — 6509 DAZZLING PINK

REPEAT: Approx. 19.7" (50.03 CM) V







# TERRAZZO

**TURN UP THE GLAM** - The look and feel of real terrazzo stone graces the walls in this luminous collection featuring authentic mica chips that glimmer and shine.

**NEW AND DAZZLING** - A new technique for specialty that merges the technology of digital printing with the luminosity and texture of mica for unique drama. A terrazzo pattern, emulating chips of marble and glass, is digitally printed onto paper and then applied with authentic Mica shavings. Paper is then sealed with a special topcoat to create a collection full of movement and shimmer. *Complimentary colors of QUARTZ are available.*

**COLORS:** 7

**BINDER:** Artisans Guild

**STOCK:** NJ, USA

**BOLT SIZE:** 12 yds (11 m)

**MINIMUM:** 12 yds (11 m)

**ORDER INCREMENTS:** 4 yds (3.6 m)  
Cut Bolts Available

**WIDTH:** 36" (91.4 cm) Pre-trimmed

**BACKING:** High Quality Paper

**CLEANING CODE:** Wipe Gently





# STREAMLINED

**SLEEK AND CHIC** - Linear sights inspire a refined horizontal stripe with hints of metallic touches.

**HANDCRAFTED** - Paper is cut, curled and woven with metallic threads for a horizontal stripe that adds a subtle and strong three-dimensional effect to the walls.

**COLORS:** 12

**BINDER:** Tailored Walls

**STOCK:** NJ, USA

**BOLT SIZE:** 12 yds (11 m)

**MINIMUM:** 12 yds (11 m)

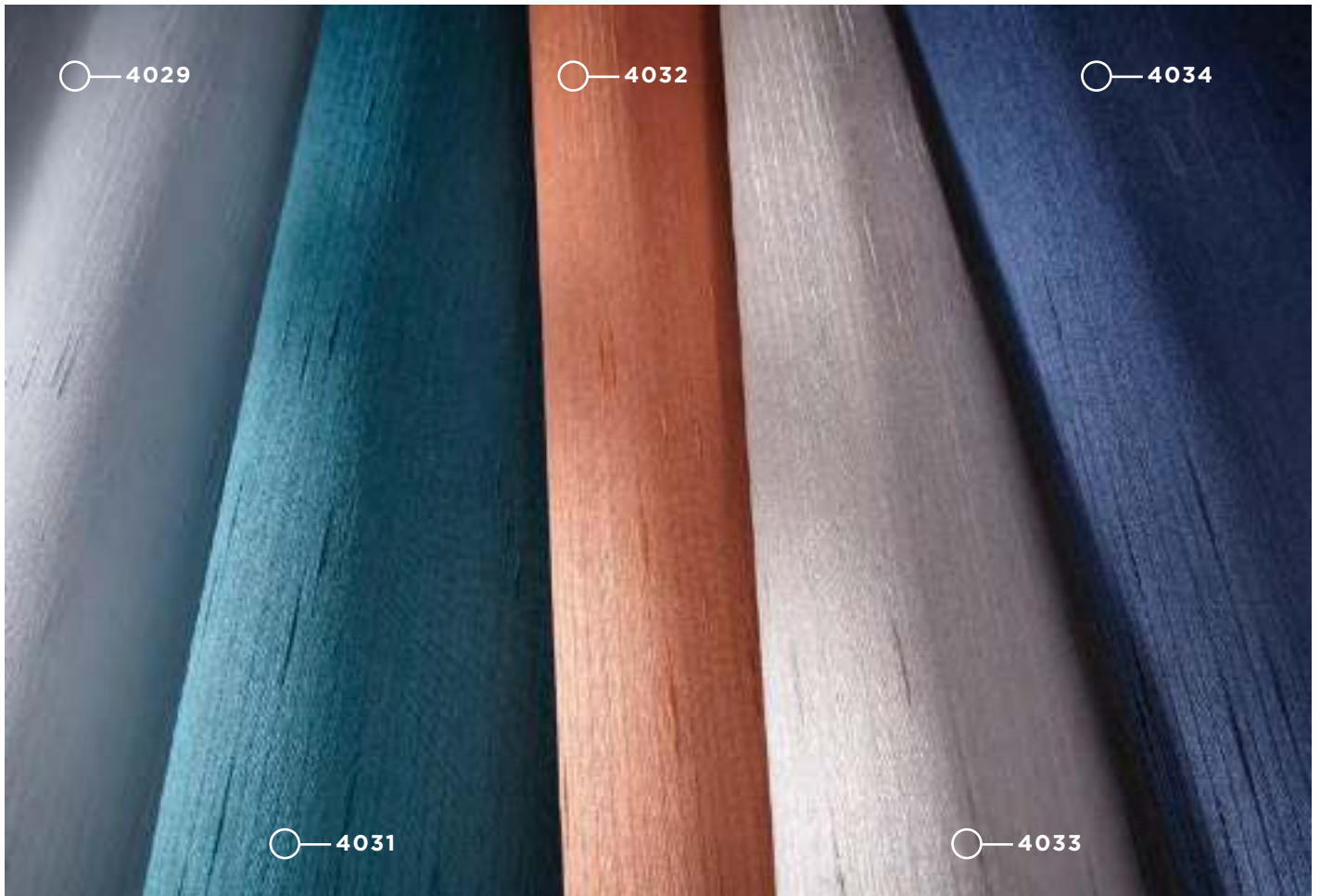
**ORDER INCREMENTS:** 4 yds (3.6 m)  
Cut Bolts Available

**WIDTH:** 36" (91.4 cm) Pre-trimmed

**BACKING:** High Quality Paper

**CLEANING CODE:** Wipe Gently





# SILKY STRINGS - ANTHOLOGY

SOPHISTICATED STRIÉ - Finely woven rayon yarns exude the luxe luster of a satin and silk in new sophisticated colors.

MODERN CLASSIC - A subtle vertical strié adds a classic tailored texture to the walls with a virtually seamless effect.

**COLORS:** 9 NEW  
13 Existing  
22 Total

**EXISTING ITEMS:** 3808, 3809, 3811, 3820, 3821, 3822, 3824, 3825, 3826, 3827, 3829, 3831, 3832

**BINDER:** Tailored Walls

**STOCK:** NJ, USA

**BOLT SIZE:** 12 yds (11 m)

**MINIMUM:** 12 yds (11 m)

**ORDER INCREMENTS:** 4 yds (3.6 m)  
Cut Bolts Available

**WIDTH:** 36" (91.4 cm) Pre-trimmed

**BACKING:** Recycled Paper

**CLEANING CODE:** Stain Repellent Finish



# GOLD COAST SILK

**TEXTURED CHARM** - The beauty of raw silk meets classic menswear in a delicate herringbone pattern for design with a rich handcrafted story.

**HANDCRAFTED** - Silk yarns are dyed, woven and treated with a Kundhi process, a method of hand beating the textile prior to lamination with a wooden mallet, to ensure a special luster and soft hand.

**COLORS:** 9

**BINDER:** Tailored Walls

**STOCK:** NJ, USA

**BOLT SIZE:** 25-30 yds (23-37 m)

**MINIMUM:** 12 yds (11 m)

**ORDER INCREMENTS:** 1 yd (0.9 m)  
Cut Bolts Available

**WIDTH:** 55.75" (141.6 cm) Untrimmed  
Trims to 54" (137 cm)

**BACKING:** Paper

**CLEANING CODE:** Water Repellent Finish





○—4196

○—4198

○—4195

○—4194

# HOW IT'S MADE

## - GOLD COAST SILK -

In India, silk yarns are treated with a special cleaning process, then expertly dyed, woven and finished using a Kundhi process.

A special Kundhi method is applied as the unbacked fabric is placed on a large wooden block and vigorously beaten by two artisans from both sides using wooden mallets. This very rare and laborious process brings out the subtle luster and soft, smooth hand of the woven silk.

Lastly, the unbacked silk is carefully laminated in Japan and treated with water-repellent and anti-fray treatments.





ITEM SHOWN: GOLD COAST SILK 4194 SEA MIST



○—2575

○—2578

○—2579





# NEWPORT THREADS

**SHORE RELAXATION** - Beach town strolls inspire this tailored weave full of soft texture and a chunky hand.

**TEXTILE TWIST** - Silk and rayon blended yarns are dyed, then twisted together and woven into a 3-color variegated texture full of depth.

**COLORS:** 7

**BINDER:** Tailored Walls

**STOCK:** NJ, USA

**BOLT SIZE:** 12 yds (11 m)

**MINIMUM:** 12 yds (11 m)

**ORDER INCREMENTS:** 4 yds (3.6 m)  
Cut Bolts Available

**WIDTH:** 36" (91.4 cm) Pre-trimmed

**BACKING:** Recycled Paper

**CLEANING CODE:** Wipe Gently









# HOW IT'S MADE

## - NEWPORT THREADS -

Four strands of the silk and rayon blended yarns are twisted together and woven into the weft to create a chunky base. Single strands of the same yarn in various colorations are woven in the warp to create a uniquely variegated texture – the result is a textile full of unique dimension and subtle pattern. Once woven, the collection is carefully laminated and treated with an anti-fray treatment for ease in installation.





# STONEWASHED LINEN

**EASY BREEZY** - The soft and subtle appeal of well-worn linens inspire an open airy textile for the walls.

**DELICATE NATURE** - Linen fibers are laminated atop a tonal strié pattern that is digitally printed for a subtle texture with soft striations. The collection is treated with an anti-fray treatment for ease in installation.

**COLORS:** 13

**BINDER:** Tailored Walls

**STOCK:** NJ, USA

**BOLT SIZE:** 12 yds (11 m)

**MINIMUM:** 12 yds (11 m)

**ORDER INCREMENTS:** 4 yds (3.6 m)  
Cut Bolts Available

**WIDTH:** 36" (91.4 cm) Pre-trimmed

**BACKING:** Non-Woven

**CLEANING CODE:** Wipe Gently





○—5495

○—5496

○—5493

○—5494

○—5499

○—5489





○ — 7006 BEIGE BREEZE  
REPEAT: 6.25" (15.9 CM) V x 4.5" (11.43 CM) H



# AMAGANSETT WEAVE

**DIAMOND POINT** - Coastal elements meet Art Deco shapes and inspire a new large-scale paperweave with a diamond design full of graphic texture.

**HANDCRAFTED** - Paper is dyed prior to weaving, cut into strings and woven into a large-scale two-color diamond pattern. Careful lamination follows for a three-dimensional look that is virtually seamless.

**COLORS:** 15

**BINDER:** Simply Seamless

**STOCK:** NJ, USA

**BOLT SIZE:** 12 yds (11 m)

**MINIMUM:** 12 yds (11 m)

**ORDER INCREMENTS:** 4 yds (3.6 m)  
Cut Bolts Available

**WIDTH:** Approx. 55-56" (139.7-142.24 cm) Untrimmed  
Trims to Approx. 53.5-54.5" (135.89-138.43 cm)

**BACKING:** High Quality Paper

**CLEANING CODE:** Wipe Gently





# COUTURE WEAVE

**ICONIC INSPIRATION** - Atelier style of Parisian salons inspires a paperweave with the classic look of bouclé suiting and a hint of metallic charm.

**HANDCRAFTED** - Paper is dyed prior to weaving, cut into strips and then woven with metallic silver and/or gold yarns for a multi-colored suiting look. Carefully laminated, this show-stopping paperweave is virtually seamless.

**COLORS:** 9

**BINDER:** Simply Seamless

**STOCK:** NJ, USA

**BOLT SIZE:** 12 yds (11 m)

**MINIMUM:** 12 yds (11 m)

**ORDER INCREMENTS:** 4 yds (3.6 m)  
Cut Bolts Available

**WIDTH:** 37" (93.98 cm) Untrimmed  
Trims to 36" (91.4 cm)

**BACKING:** Recycled Paper

**CLEANING CODE:** Wipe Gently



# MAX'S METALLIC RAFFIA II

**BLING FACTOR** - Authentic handwoven raffia dripping in metallic for an iridescent shimmer in chic new colorations.

**HANDCRAFTED** - Woven of only the highest quality raffia, material is sorted, cleaned & dried before weaving even begins. Once woven, a metallic color wash is applied for shimmer, collection is expertly laminated and treated with a stain repellent finish.

**COLORS:** 9 NEW  
7 Existing  
16 Total

**EXISTING ITEMS:** 1314, 3540, 3541, 3542,  
3543, 3544, 3545

**BINDER:** House of Naturals

**STOCK:** NJ, USA

**BOLT SIZE:** 8 yds (7.3 m)

**MINIMUM:** 8 yds (7.3 m)

**ORDER INCREMENTS:** 8 yds (7.3 m)

**WIDTH:** 36" (91.4 cm) Pre-trimmed

**BACKING:** High Quality Recycled Paper

**CLEANING CODE:** Stain Repellent Finish





○—4531

○—4529

○—4535

○—4533



○ 5029 COCOA FACADE

REPEAT: 7" (17.78 CM) V x 7" (17.78 CM) H







## DECO HEMP

**FABULOUS FLAIR** - The glamorous flair of ART DECO pairs with the natural grass of Soho Hemp for a unique design mix.

**HANDCRAFTED** - Multicolored hand woven sisal is sliced into shapes and hand laid in a braided tear drop pattern atop a metallic gold or silver ground for a three-dimensional effect.

**COLORS:** 8

**BINDER:** House of Naturals

**STOCK:** NJ, USA

**BOLT SIZE:** 12 yds (11 m)

**MINIMUM:** 12 yds (11 m)

**ORDER INCREMENTS:** 4 yds (3.6 m)  
Cut Bolts Available

**WIDTH:** 36" (91.4 cm) Untrimmed  
Trims to 35" (88.9 cm)

**BACKING:** High Quality Paper

**CLEANING CODE:** Wipe Gently











# HOW IT'S MADE

## - DECO HEMP -

Soho Hemp ground is hand woven using two to three colors of authentic hemp and laminated onto color paper backings for a multi-colored texture.

This hemp ground is dye-cut into tear drop shapes and hand laid by artisans into a braided geometric pattern atop a silver or gold ground for a glamorous three-dimensional effect.

○ 7169 BEVELED MIRROR GREY PENDULUM



BEVELED REPEAT: 18" (45.7 CM) V x 54" (137 CM) H

PHILLIPJEFFRIES.COM





# VINYL MIRROR MIRROR II

FAIREST OF THEM ALL - Chic and reflective, a new beveled mirror design joins new colorations of the antiqued solid Mirror Mirror, all available in PERFORMANCE VINYL - merging luxe design with the durability and technology offered by today's performance wallcoverings.

WASHABLE & DURABLE - Type II, 20 oz. vinyl suitable for contract, hospitality & residential use.

**COLORS:** 9 NEW

5 Existing

14 Total

**EXISTING ITEMS:** 7734, 7730, 7731, 7735, 7737

**BINDER:** PJ Contract Box

**STOCK:** USA

**BOLT SIZE:** 30 yds (27.4 m)

**MINIMUM:** 15 yds (13.7 m)

**ORDER INCREMENTS:** 5 yds (4.5 m)  
Cut Bolts Available

**WIDTH:** 52-54" (132-137 cm) Untrimmed

**BACKING:** Non-Woven

**CLEANING CODE:** Type II Washable





# VINYL SUNLIT SILK

**RAY OF LIGHT** - The look of fine lustrous silk with a unique sparkle, available in **PERFORMANCE VINYL** - merging luxe design with the durability and technology offered by today's performance wallcoverings.

**WASHABLE & DURABLE** - Type II, 20 oz. vinyl suitable for contract, hospitality & residential use.

**COLORS:** 13

**BINDER:** PJ Contract Box

**STOCK:** USA

**BOLT SIZE:** 30 yds (27.4 m)

**MINIMUM:** 15 yds (13.7 m)

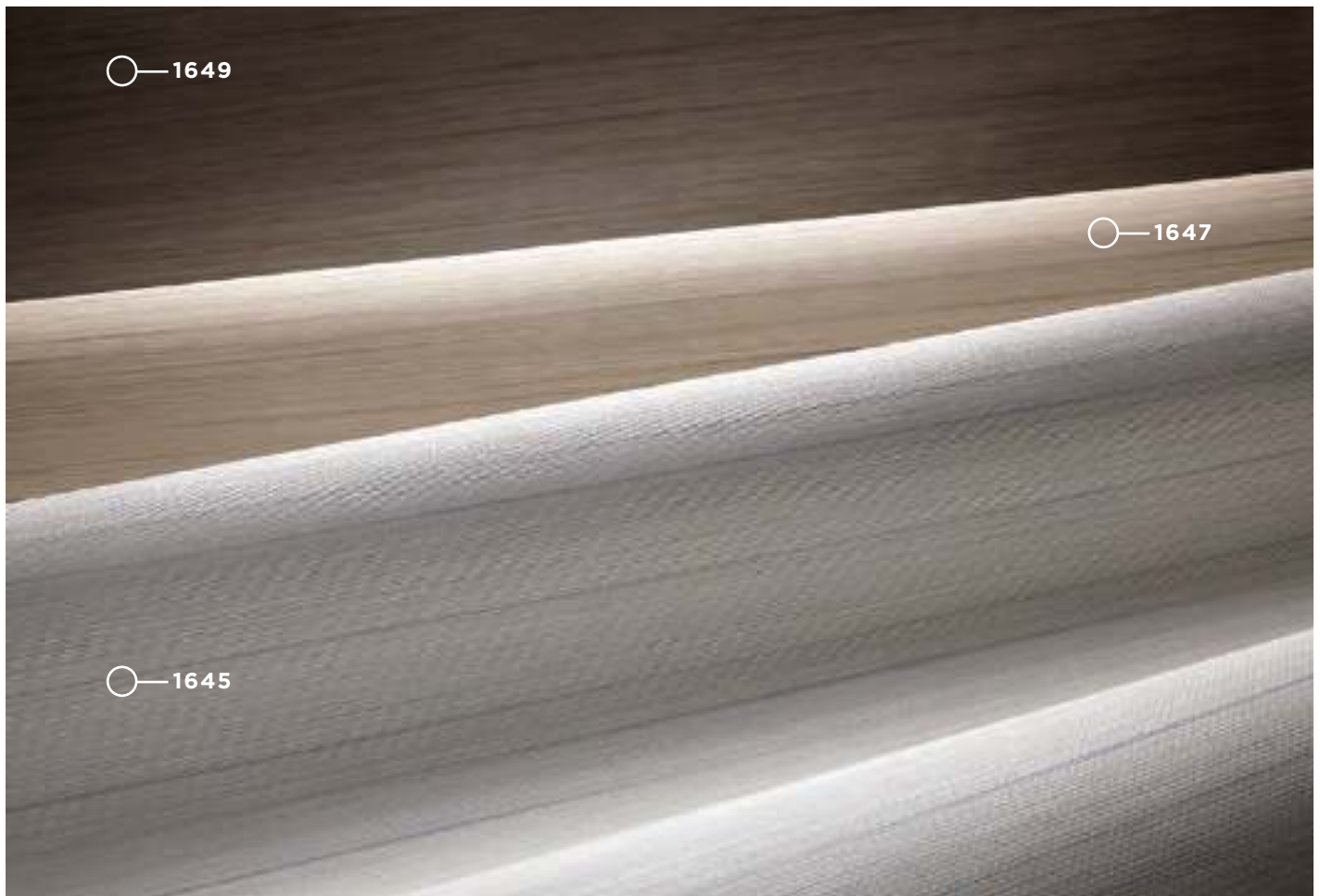
**ORDER INCREMENTS:** 5 yds. (4.5 m)  
Cut Bolts Available

**WIDTH:** 55.5" (140.97 cm) Untrimmed  
Trims to 54" (137 cm)

**BACKING:** Non-Woven

**CLEANING CODE:** Type II Washable





# VINYL LONDON LINENS

**CHIC & CLASSIC** - The look and feel of a sophisticated handwoven texture, available in **PERFORMANCE VINYL** – merging luxe design with the durability and technology offered by today’s performance wallcoverings.

**WASHABLE & DURABLE** - Type II, 20 oz. vinyl suitable for contract, hospitality & residential use.

**COLORS:** 7

**BINDER:** PJ Contract Box

**STOCK:** NJ, USA

**BOLT SIZE:** 30 yds (27.4 m)

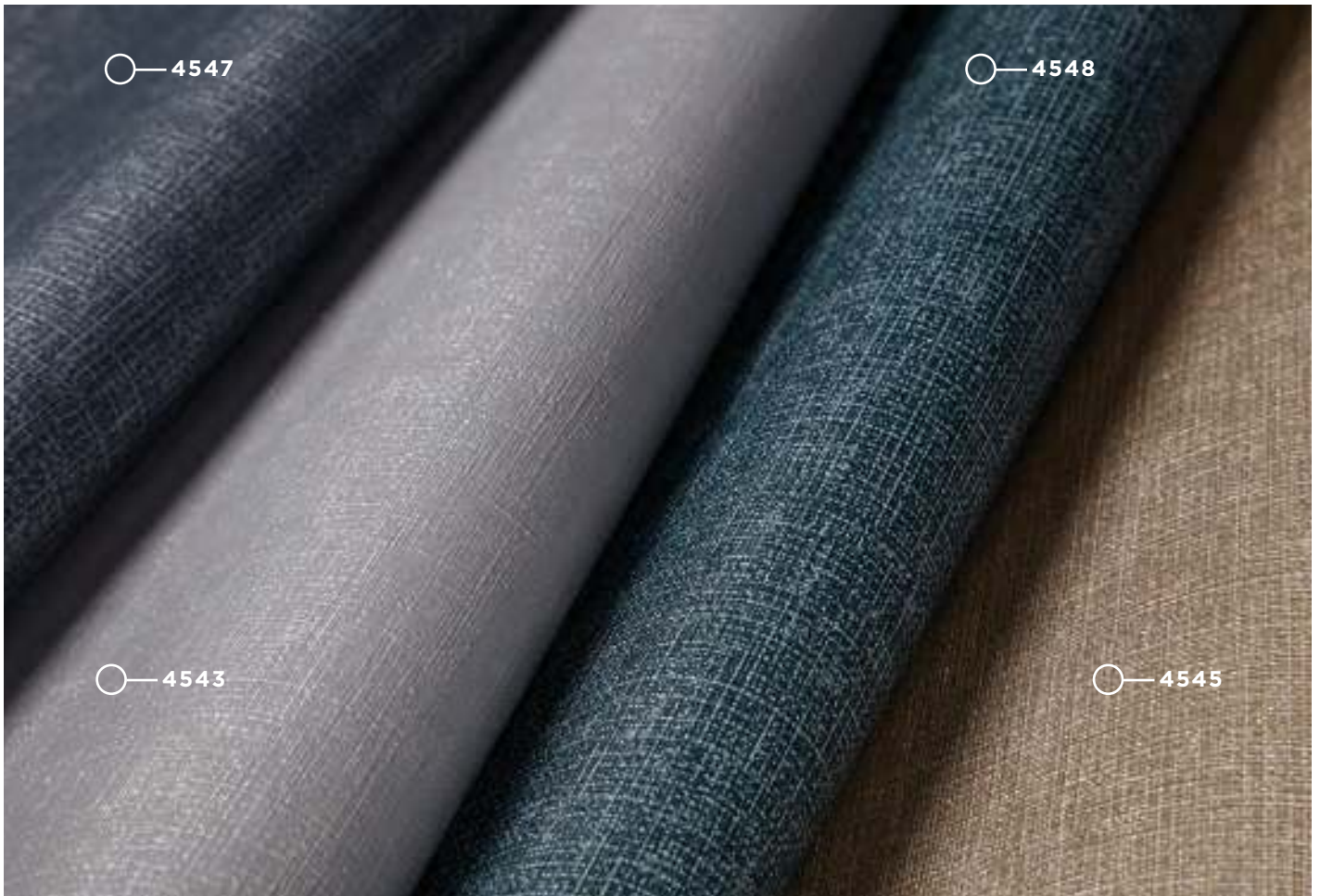
**MINIMUM:** 15 yds (13.7 m)

**ORDER INCREMENTS:** 5 yds (4.5 m)  
Cut Bolts Available

**WIDTH:** 52-54” (132-137 cm) Untrimmed  
Trims to 50-52” (127-132 cm)

**BACKING:** Non-Woven

**CLEANING CODE:** Type II Washable



## VINYL LEO'S LUXE LINENS II

POISED & POLISHED - New colors join this collection of metallic linen with a touch of casual glam, available in PERFORMANCE VINYL - merging luxe design with the durability and technology offered by today's performance wallcoverings.

WASHABLE & DURABLE - Type II, 20 oz. vinyl suitable for contract, hospitality & residential use.

**COLORS:** 13

**BINDER:** PJ Contract Box

**STOCK:** USA

**BOLT SIZE:** 30 yds (27.4 m)

**MINIMUM:** 15 yds (13.7 m)

**ORDER INCREMENTS:** 5 yds (4.5 m)  
Cut Bolts Available

**WIDTH:** 52-54" (132-137 cm) Untrimmed  
Trims to 50-52" (127-132 cm)

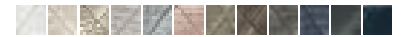
**BACKING:** Osnaburg

**CLEANING CODE:** Type II Washable





○ 4166 SUMPTUOUS GREY  
 MOTIF REPEAT: 7" (17.8 CM) V x 5.4" (13.7 CM) H



# VINYL CROCODILE CLUTCH

**LEATHER LOOKS** - The exotic texture of crocodile skin in a fashion-forward diamond design, available in **PERFORMANCE VINYL** - merging luxe design with the durability and technology offered by today's performance wallcoverings.

**WASHABLE & DURABLE** - Type II, 20 oz. vinyl suitable for contract, hospitality & residential use.

**COLORS:** 12

**BINDER:** PJ Contract Box

**STOCK:** USA

**BOLT SIZE:** 30 yds (27.4 m)

**MINIMUM:** 15 yds (13.7 m)

**ORDER INCREMENTS:** 5 yds (4.5 m)  
 Cut Bolts Available

**WIDTH:** 54.5" (138.4 cm) Untrimmed  
 Trims to 54" (137 cm)

**BACKING:** Non-Woven

**CLEANING CODE:** Type II Washable

○ 2175 MARQUEE OVATION



MARQUEE REPEAT: 21" (53.3 CM) V x 54" (137 CM) H

PHILLIPJEFFRIES.COM





# VINYL MARQUEE SILK

NAME IN LIGHTS - Theatrical grandeur inspires a large-scale graphic silk design and solid coordinates, available in PERFORMANCE VINYL - merging luxe design with the durability and technology offered by today's performance wallcoverings.

WASHABLE & DURABLE - Type II, 20 oz. vinyl suitable for contract, hospitality & residential use.

**COLORS:** 24 NEW

19 Silk

5 Marquee

**BINDER:** PJ Contract Box

**STOCK:** USA

**BOLT SIZE:** 30 yds (27.4 m)

**MINIMUM:** 15 yds (13.7 m)

**ORDER INCREMENTS:** 5 yds (4.5 m)  
Cut Bolts Available

**WIDTH:** 54.5" (138.4 cm) Untrimmed  
Trims to 52-54" (132-137 cm)

**BACKING:** Non-Woven

**CLEANING CODE:** Type II Washable





REPEAT: 23" (58.4 CM) V x 33.5" (85.1 CM) H  
2954: 23" (58.4 CM) V x 50.25" (127.6 CM) H



# MODERN MOON

OVER THE MOON - Charming half-moon motifs take graphic form in a small-scale print that brings both a retro and touch of Art Deco to the walls.

HANDCRAFTED - Hand printed on a variety of handcrafted grounds, including Copper, Glam Grass, Japanese Paper Weave, Manila Hemp, and Vinyl Mirror Mirror for a graphic play on pattern and texture.

**COLORS:** 9

**WIDTH:** 36" (91.4 cm) Untrimmed | Trims to 33.5" (85.1 cm)  
Item 2954: 54" (137 cm) Untrimmed | Trims to 50.25" (127.6 cm)

**BINDER:** PJ Prints

**BACKING:** High Quality Paper  
Item 2954: Non-Woven

**STOCK:** Made to Order

**CLEANING CODE:** Wipe Gently

**BOLT SIZE:** 24 yds (22 m)

**MINIMUM:** 24 yds (22 m)

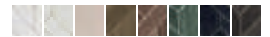
**ORDER INCREMENTS:** 4 yds (3.6 m)  
Cut Bolts Available

PART OF THE PJ MASH-UP PROGRAM





REPEAT: 10" (25.4 CM) V x 6" (15.24 CM) H



# YACHT CLUB II

LUXE LINK - New colors join this interlocking chain pattern inspired by rich wood accents and luxe life of the regatta world.

HANDCRAFTED - Authentic wood veneer is given a color wash, dye-cut and hand placed atop a metallic gold or silver ground, that creates a graphic and glamorous three-dimensional effect.

**COLORS:** 8 NEW  
6 Existing  
14 Total

**EXISTING ITEMS:** 4290, 4292, 4293, 4294, 4295, 4296

**BINDER:** Artisans Guild

**STOCK:** NJ, USA

**BOLT SIZE:** 12 yds (11 m)

**MINIMUM:** 12 yds (11 m)

**ORDER INCREMENTS:** 4 yds (3.6 m)  
Cut Bolts Available

**WIDTH:** 36" (91.4 cm) Pre-trimmed

**BACKING:** Non-Woven

**CLEANING CODE:** Wipe Gently





# HOW IT'S MADE

## - YACHT CLUB II -

Authentic wood veneer is selected by artisans and given a color wash.

Wood veneer is then dye-cut into variety of dimensional shapes. These pieces of wood are carefully hand laid atop a metallic gold or silver ground in a chain link pattern for a detailed design with a three-dimensional effect. This process requires much talent, precision and patience.

Once all of the wood veneer pieces are applied, the completed material is pressed to perfection and followed by inspection.



# SCULPTED WOOD

**INTERLOCKING ART** - Cubist art and sculpture of the 20th century movement inspire this avant-garde pattern of wood design.

**HANDCRAFTED** - Authentic wood veneer is given a color wash, dye-cut and hand laid by artisans into a geometric pattern that creates the illusion of a modern sculpture full of three-dimensional drama. This process requires much talent, precision and patience. Once all of the wood veneer pieces are applied, the completed material is pressed to perfection and followed by inspection.

**COLORS:** 10

**BINDER:** Artisans Guild

**STOCK:** NJ, USA

**BOLT SIZE:** 12 yds (11 m)

**MINIMUM:** 12 yds (11 m)

**ORDER INCREMENTS:** 4 yds (3.6 m)  
Cut Bolts Available

**WIDTH:** 36" (91.4 cm) Pre-trimmed

**BACKING:** Non-Woven

**CLEANING CODE:** Wipe Gently





— 2820 CUBISM

REPEAT: 36" (91.4 CM) V x 36" (91.4 CM) H



○—4800 FOG

ON SILVER VINYL GILDED AGE







# MIST

**NEW DAWN** - A mystical utopia emerges from the haze with this ethereal take on a mountainous landscape design.

**ARTISTRY MEETS INNOVATION** - Digitally printed on a variety of grounds including Copper, Enchanted Woods, Glam Grass, Manila Hemp, Star Dust Silk, and Vinyl Gilded Age. Digital design mixes old-world craftsmanship with new-world technology.

**COLORS:** 7

**BINDER:** Gallery

**PANEL REPEAT:** 6 panels  
Item 4800: 4 panels

**MINIMUM:** 4 panels  
Item 4800: 3 panels

**ORDER INCREMENTS:** 1 panel

**PANEL SIZE:** Height 134" (340.4 cm) Untrimmed  
Trim pattern to wall height

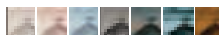
**WIDTH:** 36" (91.4 cm) Untrimmed / Trims to 33" (83.8 cm)  
Item 4800: 54" (137 cm) Untrimmed / Trims to 49.5" (125.7 cm)

**STOCK:** Made to Order

**BACKING:** High Quality Paper  
Item 4797: Recycled Paper  
Item 4800: Non-Woven

**CLEANING CODE:** Wipe Gently

**PART OF THE PJ MASH-UP PROGRAM**



# SPRING 2020 COMPLIMENTS

CHECK OUT THE LIST BELOW FOR PJ'S RECOMMENDED COMPLIMENTS TO THE NEW SPRING 2020 LAUNCH.  
 FOR EXAMPLE: IF THEY LOVE TWEED, PLEASE SHARE SAVILE SUITING.



TERAZZO

=



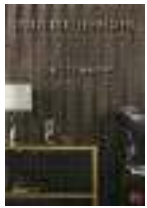
QUARTZ



REFLECTIONS



GRANITE



DECO HEMP

=



PEAK CHIC



SOHO HEMP II



COFFERED WOOD



YACHT CLUB II

=



YACHT CLUB



FRETWORK



WOVEN WOOD



SCULPTED WOOD

=



PALAZZO



COFFERED WOOD



AGAINST THE GRAIN



MIST

=



BEYOND



FADE



SPLASH

=



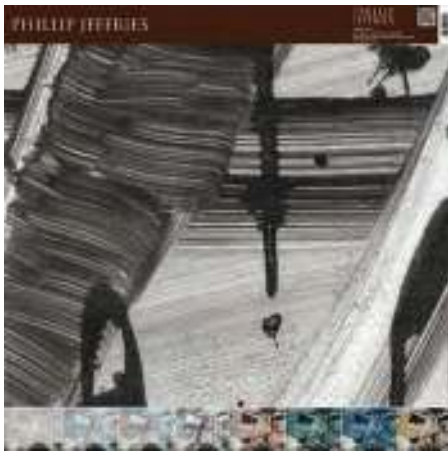
BLUR



# SPRING 2020 WOW SAMPLES



Mist: 4800



Splash: 2461

Our Wow Sample program is expanding to include 2 new spring introductions and 6 existing best-selling digitals. Additional changes include a new format, a QR code, and broader distribution.

### New Format

As we expand our program, we will produce one Wow Sample for select collections. All other colorways will be included as thumbnails across the bottom of each Wow Sample. Each will now include a QR code on the header near the barcode.

### Broader Distribution

Wow Samples will now be sent out automatically with corresponding sample orders. The current web ordering process and permissions will remain the same, with only Sales Representatives allowed to order Wow Samples online.

### In Rep Kit: New Spring 2020 Introductions

Mist – 4800

Splash – 2461

### Coming Soon: Existing Best-Selling Digitals

Beyond – 7200

Bloom – 7191-L

Blossom – 6402

Blur – 7800

Fade – 7226

Serenity – 7378

*Additional details will be provided in our Spring 2020 launch webinar so prepare to be WOWED!*

# SPRING 2020 PJ MASH-UP ADDITIONS

## DIGITAL ADDITIONS



- Splash 8 color options
- Mist 7 color options
- 24 ground options

## PRINT ADDITION



Choose ANY color for this one color print and pair it with one of over 50 ground options.



# ART DECADE

IMAGES FOR YOU TO ENJOY!



# SPLASH

○ — 2461 ABSTRACT NIGHT  
ON WHITE JAPANESE PAPER WEAVE





# SPLASH

○—2461 ABSTRACT NIGHT  
ON WHITE JAPANESE PAPER WEAVE





# METROPOLITAN MARBLE

○ — 7946 MINERAL TAUPE



# METROPOLITAN MARBLE

○ — 7946 MINERAL TAUPE









# TERRAZZO

○ — 6509 DAZZLING PINK







# TERRAZZO

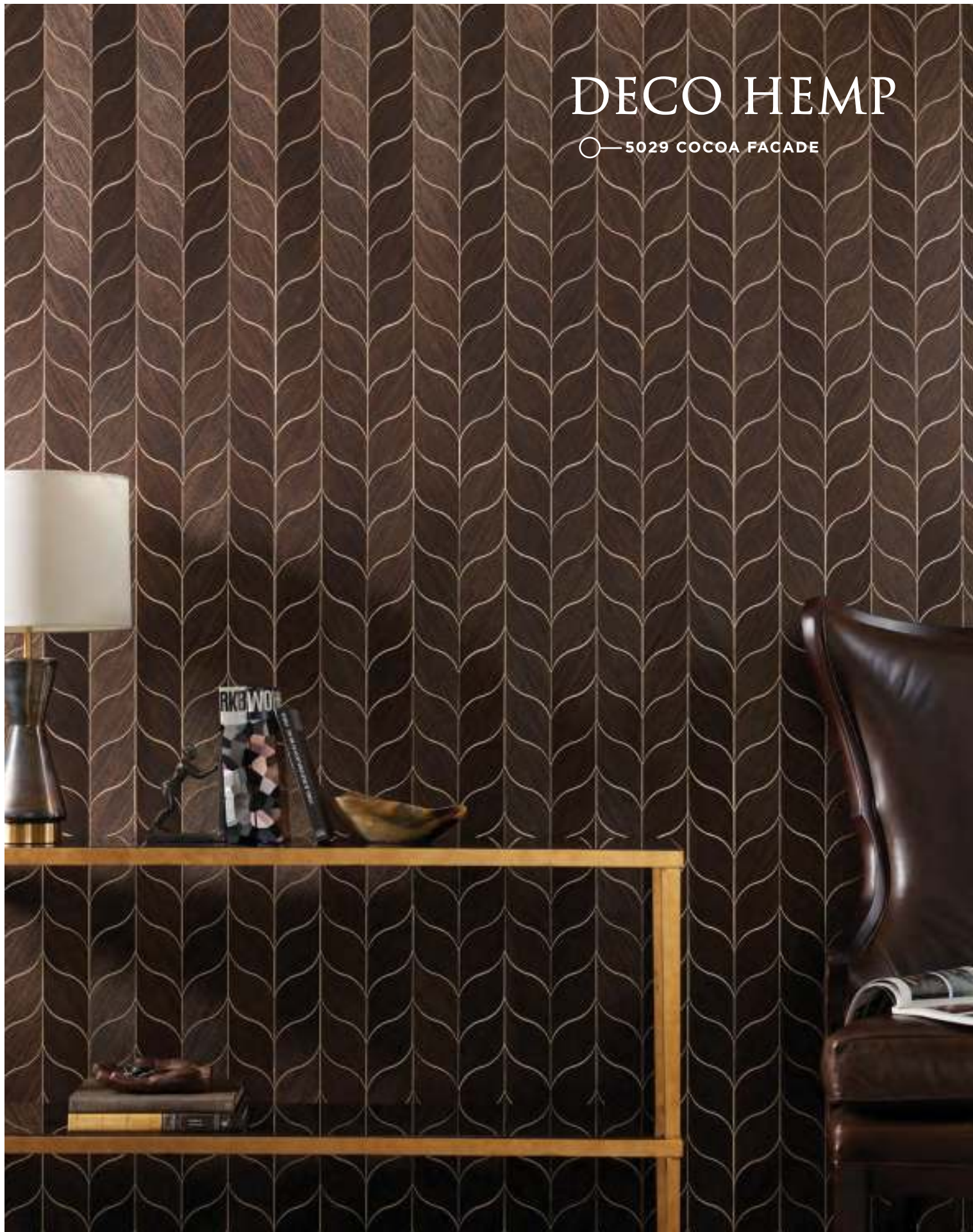
○ — 6509 DAZZLING PINK





# DECO HEMP

○ — 5029 COCOA FACADE





# DECO HEMP

○ — 5029 COCOA FACADE







# VINYL MARQUEE SILK

○—2175 MARQUEE OVATION







# VINYL MARQUEE SILK

○ — 2175 MARQUEE OVATION





# MODERN MOON

○—2949 SERENE BLUE  
ON MARSHMALLOW MANILA HEMP





# SCULPTED WOOD

○ — 2820 CUBISM









# SCULPTED WOOD

○ — 2820 CUBISM





# MIST

○ — 4800 FOG

ON SILVER VINYL GILDED AGE



# MIST

○ — 4800 FOG

ON SILVER VINYL GILDED AGE



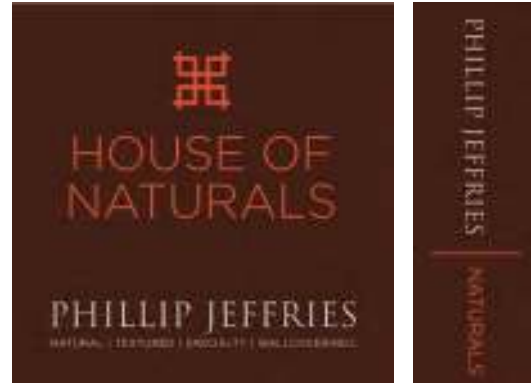




# SPRING 2020 BINDERS & BOXES

## NATURALS

Grasscloths, Hemps, Raffias, Arrowroots, Jutes, Metallic Grasses, Corks, Banana Barks, Water Hyacinths, Rice Papers, Abacas.



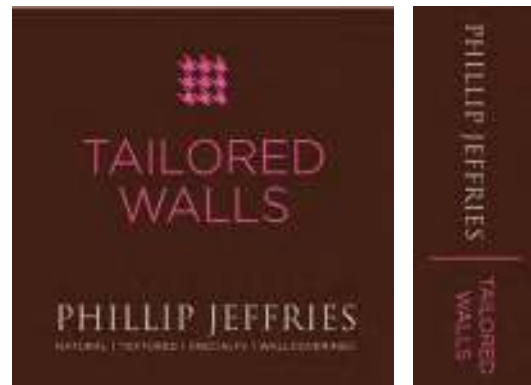
## SEAMLESS

Virtually seamless paper weaves.



## TEXTURED

Fine Silks, Linens, Chunky Knits, Suedes, Velvets, Herringbones, Tweeds, Plaids, Woolen Textures.



## SPECIALTY

Metallic Leaves, Raised Reliefs & Rivets, Embroideries, and Wood Veneers. Many items within this binder are also a part of our PJ MASH-UP program, allowing the client to customize our specialty items based on their needs.





# SPRING 2020 BINDERS & BOXES



## DIGITALS

Cutting edge printing technology on a variety of natural and performance vinyl grounds creates instant artwork for the walls. Items within this binder are also a part of our PJ MASH-UP program, allowing the client to customize our digitals based on their needs.



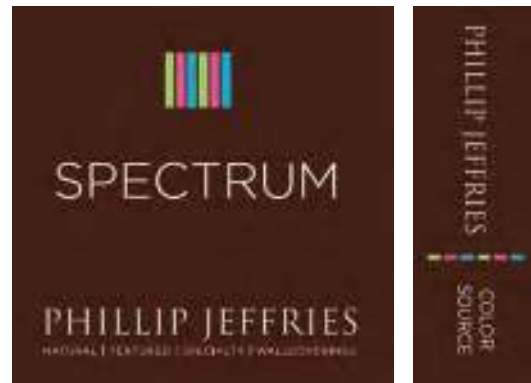
## PRINTS

Handscreened prints on a variety of natural and performance vinyl grounds. Items within this binder are also a part of our PJ MASH-UP program, allowing the client to customize our prints based on their needs.



## COLOR SOURCE

Your source for color ranging across all of our PJ binder categories.



## VINYL

Type II, 20oz. performance vinyl. Suitable for contract, hospitality and residential use. All tipcards are housed in a PJ CONTRACT box.





# HOUSE OF NATURALS

ABACA MIST\*

AFRICAN RAFFIA

ARROWROOT REVIVAL

BERMUDA HEMP II\*

BRAIDED WALLS

BURLAP SAFARI

CRACKED CORK

DECO HEMP - *NEW*\*

ENCHANTED WOODS\*

EPI LEATHER

EXTRA FINE ARROWROOT\*

GLAM GRASS II\*

GLAZED ABACA

GRASS ROOTS\*

HUSK\*

ISLAND RAFFIA

ISLES OF RAFFIA\*

JUICY JUTE II\*

KNOCK ON WOOD

MANILA HEMP: ANNIVERSARY EDITION\*

MAX'S METALLIC RAFFIA II - *NEW*\*

PASTEL HEMP

PATHWAYS

PEAK CHIC

RAFFIA REVOLUTION

SAINT GERMAIN HEMP II\*

SCORCHED

SHORELINE GRASS\*

SKYSCAPES

SOHO HEMP II\*

ST. BARTS SERENITY\*

TOTALLY TATAMI

WABI SABI WALLS

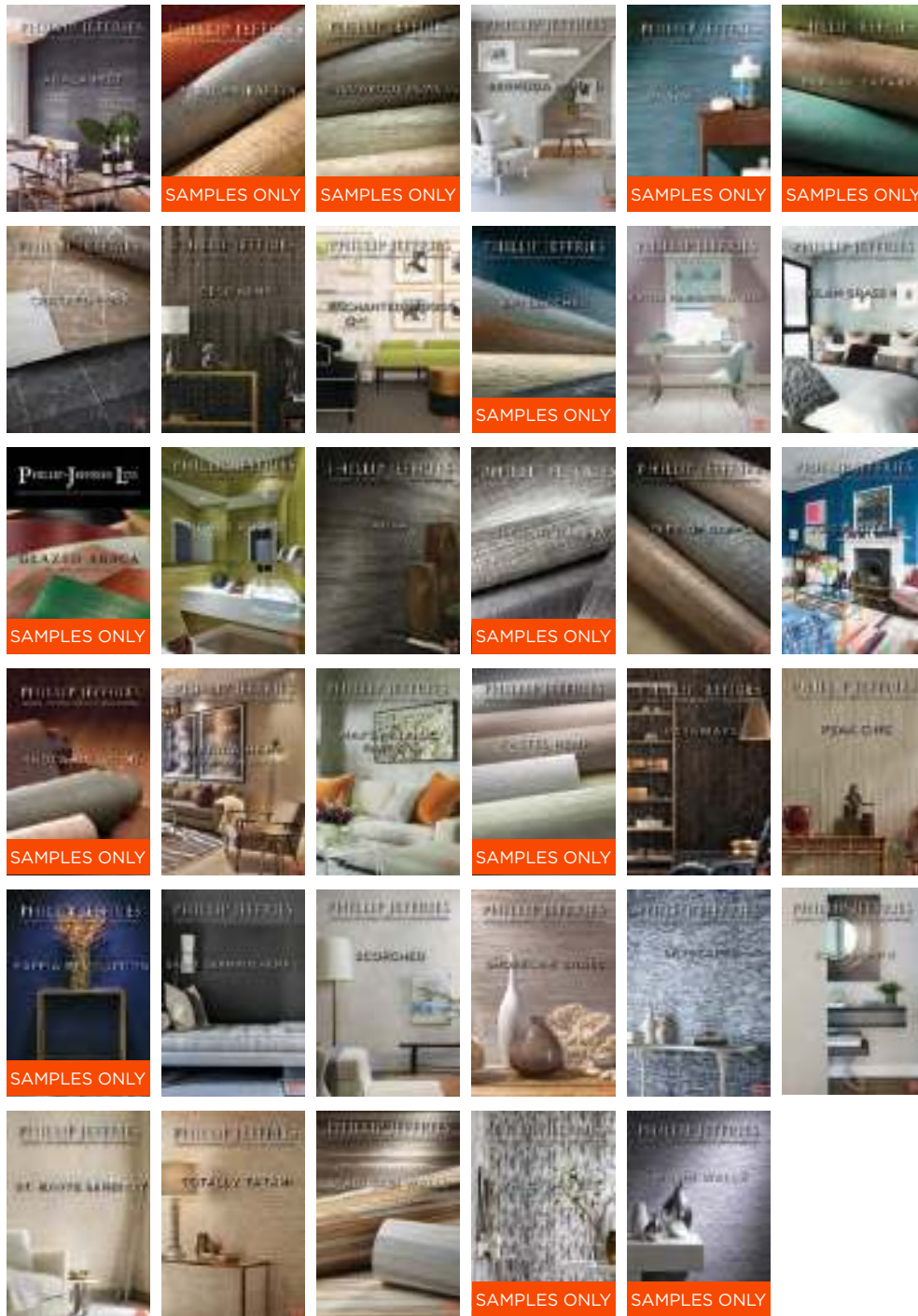
WALLS OF FEZ

WASHI WALLS

SAMPLES ONLY: CARDS ARE NO LONGER AVAILABLE, BUT ITEMS ARE STILL CURRENT TO BE SAMPLED AND PURCHASED.

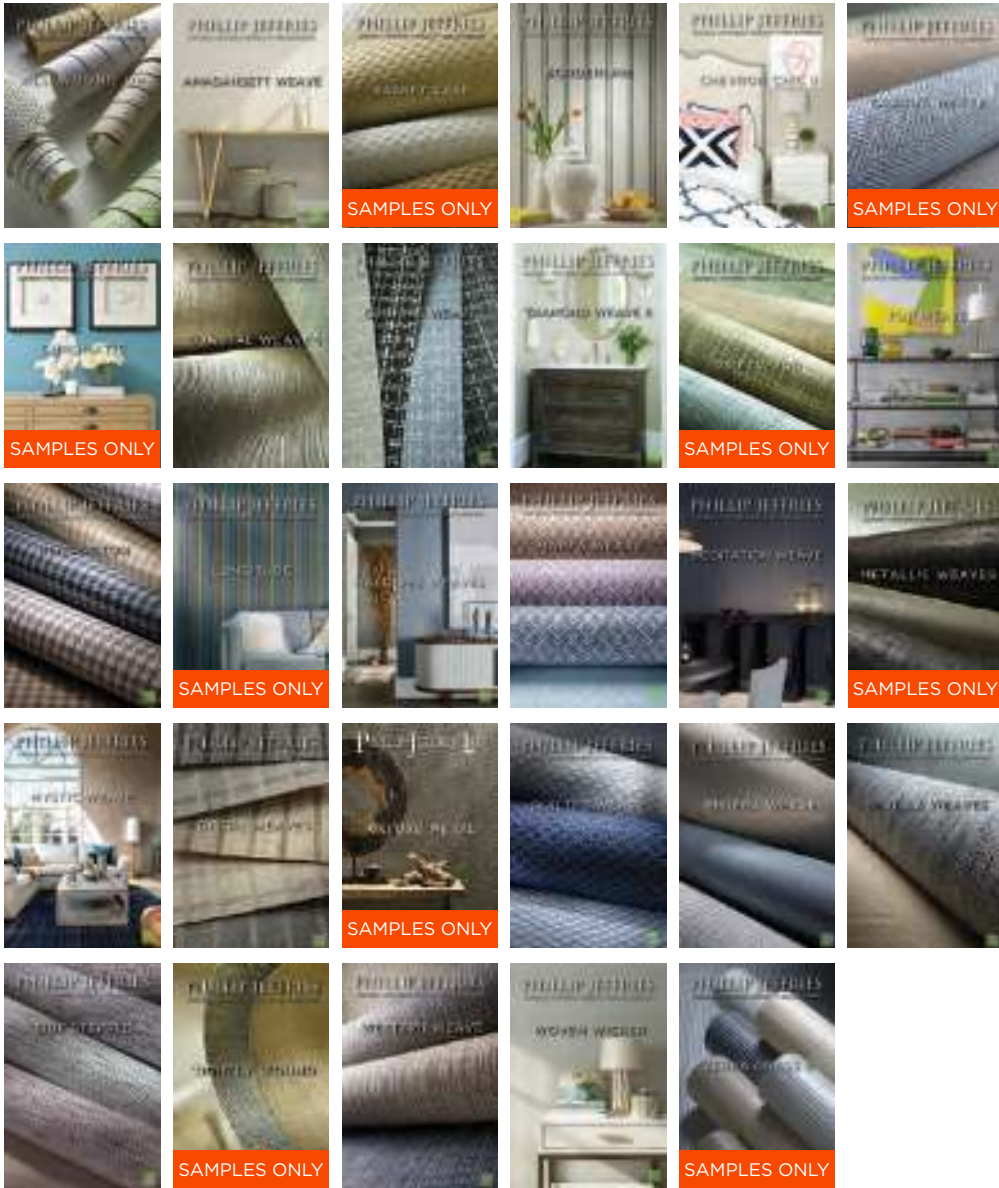


# HOUSE OF NATURALS



**SAMPLES ONLY:** CARDS ARE NO LONGER AVAILABLE, BUT ITEMS ARE STILL CURRENT TO BE SAMPLED AND PURCHASED.

# SIMPLY SEAMLESS



**SAMPLES ONLY:** CARDS ARE NO LONGER AVAILABLE, BUT ITEMS ARE STILL CURRENT TO BE SAMPLED AND PURCHASED.





# SIMPLY SEAMLESS

ALL WOUND UP\*

AMAGANSETT WEAVE - *NEW*\*

BASKET CASE

BORDERLINE

CABANA WEAVES

CHEVRON CHIC II\*

CHROMATIC

COASTAL WEAVES

COUTURE WEAVE - *NEW*\*

DIAMOND WEAVE II\*

DRIFTWOOD\*

FUJI WEAVE\*

KENSINGTON

LONGITUDE

MALDIVES WEAVES\*

MARFA WEAVE\*

MEDITATION WEAVE\*

METALLIC WEAVES\*

MYSTIC WEAVE

ORIGIN WEAVES\*

OXFORD WEAVE

QUILTED WEAVE

RIVIERA WEAVE\*

SEVILLA WEAVES\*

SIDE STEPPED\*

TIGHTLY WOUND

WESTERN WEAVE\*

WOVEN WICKER

ZEBRA GRASS II

**SAMPLES ONLY:** CARDS ARE NO LONGER AVAILABLE, BUT ITEMS ARE STILL CURRENT TO BE SAMPLED AND PURCHASED.



# TAILORED WALLS

ABACA BREEZE

ABACA HARVEST\*

ABACA SHADOWS

AMALFI & COMO SILK II\*

BELLA VISTA

BOUCLE LANE

BRUSHSTROKE SILK\*

CALYPSO LINEN

CHAIN MAIL

CHAMPS-ÉLYSÉES

CHATEAU LINEN

COMMON THREADS\*

DAKOTA LINEN

ELI'S EPIC ABACA

FLORENCIA

FRINGED

GAUCHO CLOTH\*

GOLD COAST SILK - *NEW\**

HANDIRA CLOTH

HARMONY HERRINGBONE\*

HERRINGBONE II\*

HORSEHAIR

INTERTWINED

KABUKI SUEDE

LATITUDE SILK

LEO'S LUXE LINEN II\*

LINEN AND TWEED

LOVE IT LINEN\*

MALIBU KNITS

MERIDIAN STRIPE

NANTUCKET YARNS & CLOTH

NEWPORT THREADS - *NEW\**

SATEEN\*

SAVILE SUITING\*

SEASIDE LINEN\*

SILK & ABACA II\*

SILK HALL\*

SILKY STRINGS: ANTHOLOGY - *NEW\**

SILK ROAD II

SOLSTICE SILK

STAR DUST SILK

STONEWASHED LINEN - *NEW\**

STREAMLINED - *NEW\**

SUEDE LOUNGE\*

SUIT YOURSELF\*

SUNSET SILK\*

TAILORED LINENS II\*

VELVET WALLS

WATERMARK

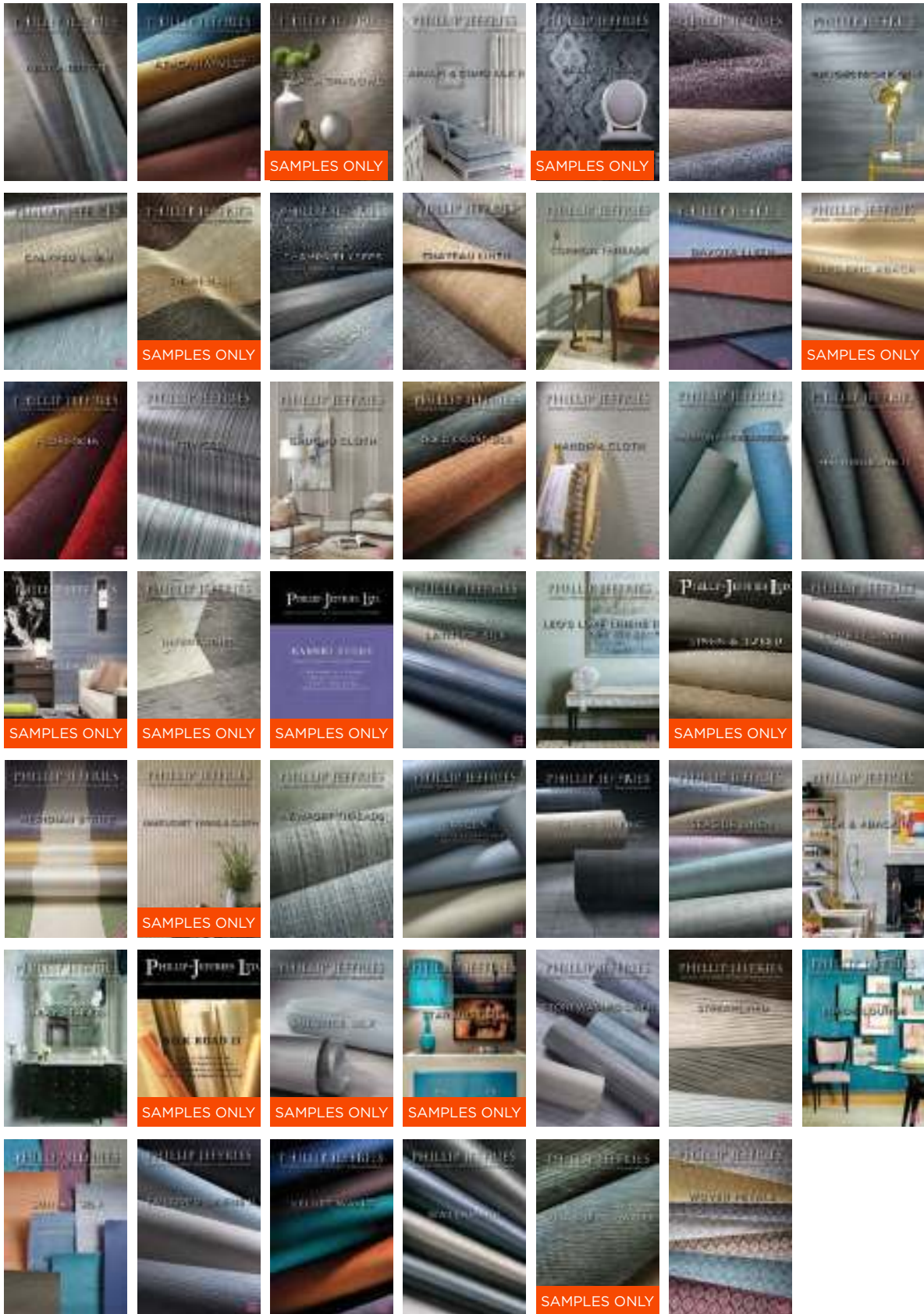
WELL DRESSED WALLS

WOVEN PETALS

SAMPLES ONLY: CARDS ARE NO LONGER AVAILABLE, BUT ITEMS ARE STILL CURRENT TO BE SAMPLED AND PURCHASED.



# TAILORED WALLS



**SAMPLES ONLY:** CARDS ARE NO LONGER AVAILABLE, BUT ITEMS ARE STILL CURRENT TO BE SAMPLED AND PURCHASED.







# ARTISANS GUILD

ABSTRACT METAL  
AGAINST THE GRAIN\*  
ALHAMBRA  
ALIGNED\*  
ARTISTRY COLLECTION  
AVIATOR  
CHAIN REACTION  
CHAMPAGNE WISHES  
COFFERED WOOD\*  
CONCRETE WASHI II\*  
DAVINCI  
DECO WOOD  
ENLIGHTENMENT\*  
ETCHED  
FLOORED  
FRAMED  
FRETWORK\*  
GEOLOGY  
GILDED AGE II  
GLAZIÉR  
GRANITE II  
GRECIAN SQAURES  
IT'S RIVETING\*  
KINSHIP  
LIGHTNING STRIKES  
LILIES  
MARBELOUS\*  
MARRAKESH METAL  
METALUXE II\*  
METROPOLITAN MARBLE - *NEW*\*

MODERN MOSAIC  
MONDRIAN  
NAILED IT\*  
ORNAMENTAL  
OUT FOR A SPIN  
PALAZZO\*  
PARTHENON  
PICASSO  
PISCES  
QUARTZ  
REFLECTIONS\*  
REMBRANDT  
RENOIR  
RIVETS  
ROCK STAR  
SANCTUARY\*  
SCULPTED WOOD - *NEW*\*  
SHAGREEN BLOC  
STUDS & STRIPES  
TERRAZZO - *NEW*\*  
TIDAL STRIPE  
TINSELTOWN  
TRELLIS  
URBAN VIEWS  
WATERCOLOR WASHI  
WILD WOODS  
WOVEN WOOD\*  
YACHT CLUB II - *NEW*\*

SAMPLES ONLY: CARDS ARE NO LONGER AVAILABLE, BUT ITEMS ARE STILL CURRENT TO BE SAMPLED AND PURCHASED.



# GALLERY

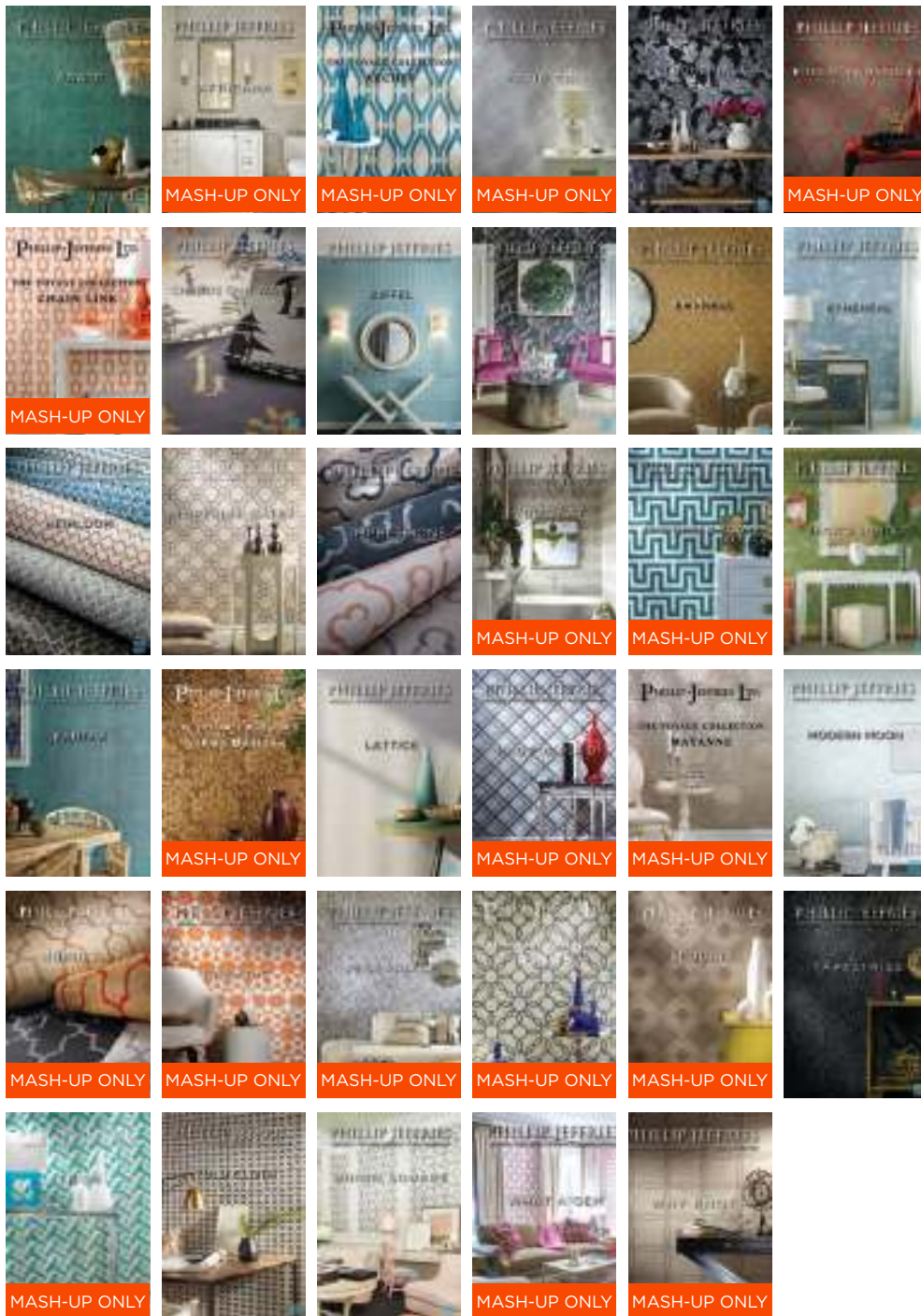
ARBORETUM\*  
BEYOND\*  
BLOOM\*  
BLOSSOM\*  
BLUR\*  
FADE\*  
FLIGHT\*  
HAVANA  
MIST - *NEW*\*  
PASSAGES  
SERENITY\*  
SHANGRI-LA\*  
SMOKE  
SPLASH - *NEW*\*  
WILDFLOWERS\*  
WISH\*



# GALLERY



# PJ PRINTS



**MASH-UP ONLY:** CARDS ARE NO LONGER AVAILABLE, BUT ITEMS ARE STILL CURRENT TO BE PURCHASED THROUGH OUR PJ MASH-UP PROGRAM.





# PJ PRINTS

AGATE\*

AFRICANA

ARCHES

BATIK CHIC

BOHEMIA\*

BOHEMIAN BANGLES

CHAIN LINK

CHINOIS OUR WAY II\*

EIFFEL\*

ELLIE'S VIEW\*

EMPRESS

ETHEREAL\*

HEIRLOOM\*

IMPERIAL GATES\*

IMPRESSIONS

INDO IKAT

IT'S GREEK TO ME

JACK'S JUNGLE\*

KANTHA\*

LARGE DAMASK

LATTICE\*

MAD FOR PLAID

MAYANNE

MODERN MOON - NEW\*

MOROCCAN

NOMADIC\*

PEÑA PALACE

RINGS

SEQUOIA

TAPESTRIES\*

TEASE

TULU CLOTH\*

UNION SQUARE\*

WHAT A GEM

WHY KNOT

SAMPLES ONLY: CARDS ARE NO LONGER AVAILABLE, BUT ITEMS ARE STILL CURRENT TO BE SAMPLED AND PURCHASED.



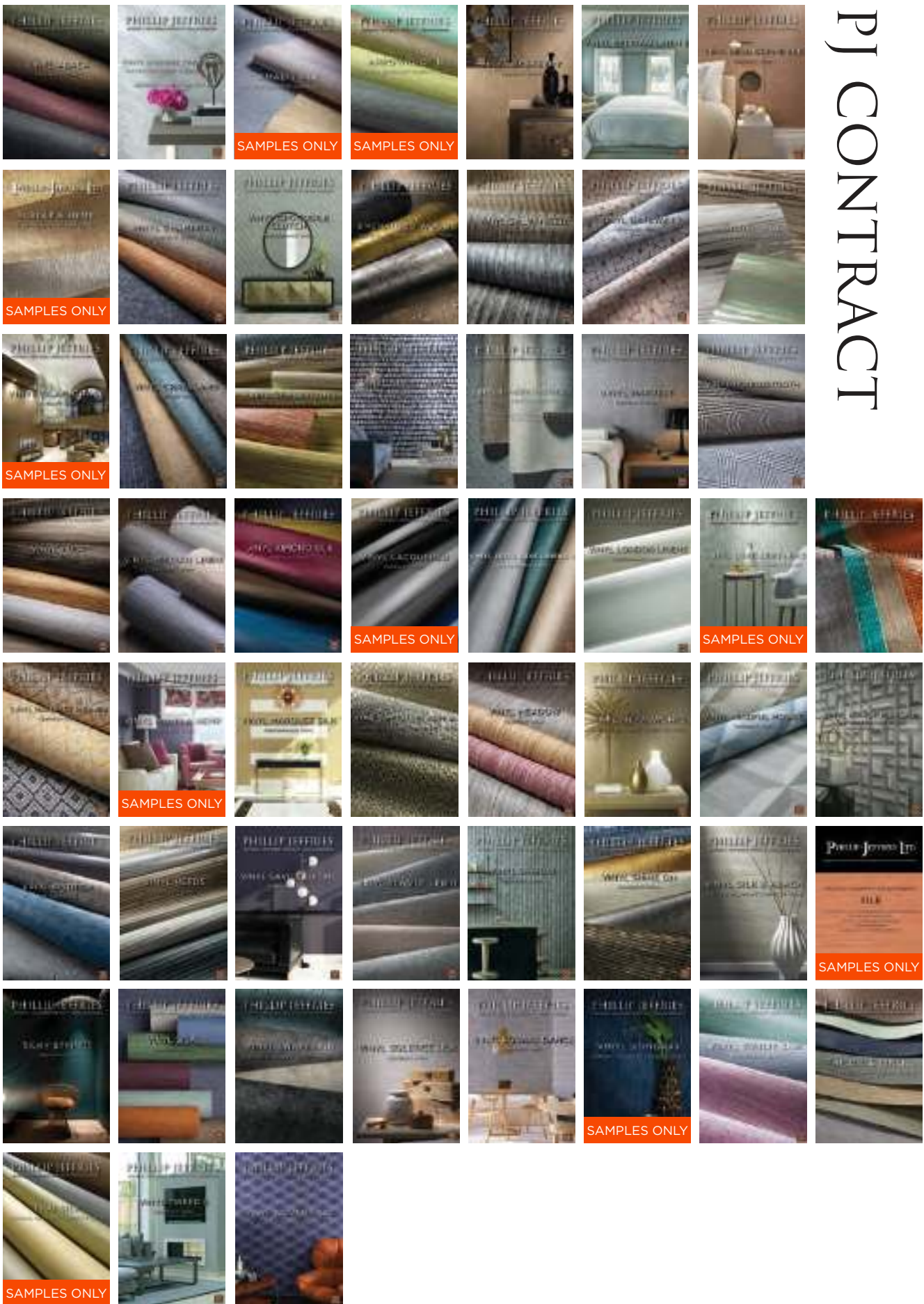
# PJ CONTRACT

ABACA\*  
AGAINST THE GRAIN\*  
AMALFI SILK  
ARROWROOT II  
BASKETRY\*  
BELGIAN LINEN II\*  
BRUSHSTROKE SILK  
BURLAP AND HEMP  
CHAMBRAY  
CROCODILE CLUTCH - *NEW*\*  
ENCHANTED WOODS\*  
GALVANIZED\*  
GATEWAY  
GILDED AGE  
GLAM GRASS\*  
GRASSLAND\*  
GRASS ROOTS  
GREAT WALL  
HABERDASHERY\*  
HARVEST  
HOUNDSTOOTH  
HUSK  
IBERIAN LINEN\*  
KIMONO SILK  
LACQUERED  
LEO'S LUXE LINENS II - *NEW*\*  
LONDON LINENS - *NEW*\*  
LUXE LEATHER  
MADAGASCAR RAFFIA\*  
MALDIVES WEAVES  
MANILA HEMP\*  
MARQUEE SILK - *NEW*\*  
MAX'S METALLIC RAFFIA\*  
MEADOW  
METALWORKS  
MINDFUL MOSAIC\*  
MIRROR MIRROR II - *NEW*\*  
OSTRICH  
REEDS  
SAVILE SUITING  
SEASIDE LINEN\*  
SHIBORI\*  
SHINE ON  
SILK & ABACA\*  
SILK ROAD  
SILKY STRINGS\*  
SISAL\*  
SNAKESKIN  
SOLSTICE SILK\*  
SQUARE DANCE\*  
STINGRAY  
SUNLIT SILK - *NEW*\*  
TAILORED LINENS\*  
THAI SILK  
TWEED II  
WOVEN SISAL

SAMPLES ONLY: CARDS ARE NO LONGER AVAILABLE, BUT ITEMS ARE STILL CURRENT TO BE SAMPLED AND PURCHASED.



# PJ CONTRACT



**SAMPLES ONLY:** CARDS ARE NO LONGER AVAILABLE, BUT ITEMS ARE STILL CURRENT TO BE SAMPLED AND PURCHASED.







# SPECTRUM

BEIGE

BLACK

BLUE

BROWN

DARK BLUE

GREEN

GREIGE

GREY1

GREY2

METALLIC

PINK

PURPLE

RED/ORANGE

TAN 1

TAN 2

TURQUOISE 1

TURQUOISE 2

WHITE 1

WHITE 2

WHITE 3

YELLOW / CARAMEL 1

YELLOW / CARAMEL 2

# SPRING 2020

COLLECTIONS SUMMARY - 224 NEW SKUS

COLLECTION	WIDTH	MINIMUM
SPLASH		
2458,2459	36" Untrimmed / Trims to 33"	4 panels
2460,2461	36" Untrimmed / Trims to 33"	4 panels
2462, 2463, 2464, 2465	54" Untrimmed / Trims to 44"	3 panels
METROPOLITAN MARBLE	36" Pre-trimmed	12 yds
TERRAZZO	36" Pre-trimmed	12 yds
STREAMLINED	36" Pre-trimmed	12 yds
SILKY STRINGS - ANTHOLOGY	36" Pre-trimmed	12 yds
GOLD COAST SILK	55.75" Untrimmed / Trims to 54"	12 yds
NEWPORT THREADS	36" Pre-trimmed	12 yds
STONEWASHED LINEN	36" Pre-trimmed	12 yds
AMAGANSETT WEAVE	Approx. 55-56" Untrimmed / Trims to Approx. 53.5-54.5"	12 yds
COUTURE WEAVE	37" Untrimmed / Trims to 36"	12 yds
MAX'S METALLIC RAFFIA II	36" Pre-Trimmed	8 yds
DECO HEMP	36" Untrimmed / Trims to 35"	12 yds
VINYL MIRROR MIRROR II	52-54" Untrimmed	15 yds
VINYL SUNLIT SILK	55.5" Untrimmed / Trims to 54"	15 yds
VINYL LONDON LINENS	52-54" Untrimmed / Trims to 50-52"	15 yds
VINYL LEO'S LUXE LINENS II	52-54" Untrimmed / Trims to 50-52"	15 yds
VINYL CROCODILE CLUTCH	54.5" Untrimmed / Trims to 54"	15 yds
VINYL MARQUEE SILK	54.5" Untrimmed / Trims to 52-54"	15 yds
MODERN MOON		
2949, 2950, 2953	36" Untrimmed / Trims to 33.5"	24 yds*
2948, 2951, 2952	36" Untrimmed / Trims to 33.5"	24 yds*
2955, 2956	36" Untrimmed / Trims to 33.5"	24 yds*
2954	54" Untrimmed / Trims to 50.25"	24 yds*
YACHT CLUB II	36" Pre-trimmed	12 yds
SCULPTED WOOD	36" Pre-trimmed	12 yds
MIST		
4794, 4795	36" Untrimmed / Trims to 33"	4 panels
4796, 4797, 4799	36" Untrimmed / Trims to 33"	4 panels
4798	36" Untrimmed / Trims to 33"	4 panels
4800	54" Untrimmed / Trims to 49.5"	3 panels

\*Lower minimum for PJ Prints with one time \$100 (100 GBP/100 Euro) set up fee available



**INSIDE BACK COVER - BLANK**

PHILLIP JEFFRIES

[PHILLIPJEFFRIES.COM](http://PHILLIPJEFFRIES.COM)