



Goodrich Global  
SINCE 1983

# PHILLIP JEFFRIES



SUMMER | 2020

# CAPE TOWN

— 6753 PENINSULA PATH



pg 4 | MOSAIC MAMBA

pg 6 | SAFARI

pg 8 | SUNWASHED LINEN

pg 9 | VINYL CANVAS LINENS

pg 10 | VINYL CHEVRON CHIC

pg 12 | VINYL ZEBRAWOOD

pg 14 | RAFFIA RETREAT

pg 18 | KUBA CLOTH

pg 22 | SAVANNA WEAVE

pg 24 | SERENGETI WEAVE

pg 26 | SAHARAN STRAW

pg 30 | CAPE TOWN

pg 34 | TOOLS

pg 40 | INSTALLS

pg 56 | BINDER GUIDE

pg 73 | PRICING

Our newest collection, Savanna, seeks inspiration from the open spaces and wonderous places that define these tropical grasslands. A vast array of colors, textures and patterns are inspired by these faraway lands. Feel the warm breeze and the heat of the sun, catch a glimpse of a zebra grazing in the lush grass, meander through markets of brightly colored crafts. Get ready for a journey that engages all of your senses – welcome to Savanna.

## SUMMER 2020

---



### HOUSE OF NATURALS

Cape Town - 6 Colors  
Raffia Retreat - 10 NEW Colors / 30 Total  
Saharan Straw - 4 Colors



### SIMPLY SEAMLESS

Savanna Weave - 14 Colors  
Serengeti Weave - 8 Colors



### TAILORED WALLS

Safari - 5 Colors  
Sunwashed Linen - 11 Colors



### ARTISANS GUILD

Mosaic Mamba - 4 Colors



### GALLERY

No New Additions



### PJ PRINTS

Kuba Cloth - 6 Colors



### PJ CONTRACT

Vinyl Canvas Linens - 13 Colors  
Vinyl Chevron Chic - 13 Colors  
Vinyl ZebraWood - 9 Colors



### COLOR SOURCE

Brown  
Green

○ 4248 GREY CHARMER

REPEAT: 25" V (63.5 cm)





# MOSAIC MAMBA

**REPTILIAN FLAIR** - Exotic reptiles inspire a multi-dimensional snakeskin design full of movement, depth and drama.

**HANDCRAFTED** - Manila Hemp is dyed, cut and then hand-laid by artisans into a multi-color reptilian pattern atop a colored or metallic ground for a glamorous effect. A selection of coordinating hemp grounds are available and noted on tip card.

**COLORS:** 4

**BINDER:** Artisans Guild

**STOCK:** NJ, USA

**BOLT SIZE:** 8 yds (7.3 m)

**MINIMUM:** 8 yds (7.3 m)

**ORDER INCREMENTS:** 8 yds (7.3 m)

**WIDTH:** Untrimmed  
Trims to Approx. 36" (Approx. 91.4 cm)

**BACKING:** Non-Woven

**CLEANING CODE:** Wipe Gently





5389 SPRINTER SANDS  
REPEAT: Approx. 28.62" H (72.7 cm)



# SAFARI : CHEETAH CLOTH

**WILD THING** - Take a walk on the wild side with the small scaled design classic CHEETAH CLOTH, a jacquard woven that plays with matte and shine yarns for a timeless texture in traditional and modern colorations.

**ALL IN THE DETAILS** - Woven in Europe on a jacquard loom for slightly raised woven texture in matte and shine yarns for subtle surface drama. Textile is then expertly laminated and applied with stain repellent finish for ease in installation.

**COLORS:** 3

**BINDER:** Tailored Walls

**STOCK:** NJ, USA

**BOLT SIZE:** Approx. 33 yds (Approx. 30 m)

**MINIMUM:** 4 yds (3.6 m)

**ORDER INCREMENTS:** 4 yds (3.6 m)  
Cut Bolts Available

**WIDTH:** Untrimmed  
Trims to 57.25" (145.4 cm)

**BACKING:** 100% Paper

**CLEANING CODE:** Stain Repellent Finish



— 5390 GREVY GREY  
 REPEAT: Approx. 21" V x 28.75" H (53.3 x 73 cm)



# SAFARI : ZEBRA CLOTH

**DESIGN STAMPEDE** - A boldly striped animal print motif takes the walls in large scaled ZEBRA CLOTH, a jacquard woven that plays with matte and shine yarns for a wild and graphic texture in classic and modern colorations.

**ALL IN THE DETAILS** - Woven in Europe on a jacquard loom for slightly raised woven texture in matte and shine yarns for subtle surface drama. Textile is then expertly laminated and applied with stain repellent finish for ease in installation.

**COLORS:** 2

**BINDER:** Tailored Walls

**STOCK:** NJ, USA

**BOLT SIZE:** Approx. 33 yds (Approx . 30 m)

**MINIMUM:** 4 yds (3.6 m)

**ORDER INCREMENTS:** 4 yds (3.6 m)  
 Cut Bolts Available

**WIDTH:** Untrimmed  
 Trims to 57.5" (146 cm)

**BACKING:** 100% Paper

**CLEANING CODE:** Stain Repellent Finish



# SUNWASHED LINEN

RELAXED YET REFINED - Soft, sun-bleached linens line the walls in shades influenced by the earthy tones of the Savanna for a classic yet casual design vibe.

ALL IN THE DETAILS - Fibers are dyed prior to weaving for consistent coloring, then woven and treated with an anti-fray treatment for ease in installation.

**COLORS:** 11

**BINDER:** Tailored Walls

**STOCK:** NJ, USA

**BOLT SIZE:** 12 yds (11 m)

**MINIMUM:** 12 yds (11 m)

**ORDER INCREMENTS:** 4 yds (3.6 m)  
Cut Bolts Available

**WIDTH:** 36" (91.4 cm) Pre-trimmed

**BACKING:** 100% Paper

**CLEANING CODE:** Stain Repellent Finish





○ — 1593 FAINT GREEN





# VINYL CANVAS LINENS

ICONIC INSPIRATION - The look of refined canvas linens in a relaxed palette of soft, classic hues is available in PERFORMANCE VINYL - merging luxe design with the durability and technology offered by today's performance wallcoverings.

WASHABLE & DURABLE - Type II, 20 oz. vinyl suitable for contract, hospitality and residential use.

**COLORS:** 13

**BINDER:** PJ Contract Box

**STOCK:** USA

**BOLT SIZE:** 30 yds (27.4 m)

**MINIMUM:** 15 yds (13.7 m)

**ORDER INCREMENTS:** 5 yds (4.5 m)  
Cut Bolts Available

**WIDTH:** 52-54" (132-137 cm) Untrimmed

**BACKING:** Osnaburg

**CLEANING CODE:** Type II Washable



REPEAT: 0.56" V x 5.25" H (1.43 cm x 13.3 cm)



# VINYL CHEVRON CHIC

MODERN MOVEMENT - A crisp graphic element ignites the walls with a chevron paperweave available in PERFORMANCE VINYL - merging luxe design with the durability and technology offered by today's performance wallcoverings.

WASHABLE & DURABLE - Type II, 20 oz. vinyl suitable for contract, hospitality and residential use.

**COLORS:** 13

**BINDER:** PJ Contract Box

**STOCK:** USA

**BOLT SIZE:** 30 yds (27.4 m)

**MINIMUM:** 15 yds (13.7 m)

**ORDER INCREMENTS:** 5 yds (4.5 m)  
Cut Bolts Available

**WIDTH:** 52-54" (132-137 cm) Untrimmed  
Trims to 50-52" (127-132 cm)

**BACKING:** Osnaburg

**CLEANING CODE:** Type II Washable



○ — 7872 FARMHOUSE BROWN  
REPEAT: 18" V x 54" H (45.7 x 137.2 cm)



# VINYL ZEBRAWOOD

STRIPED SOPHISTICATION - Rich and rustic, the look of multicolor wood planks with a bold abstract stripe for a touch of graphic drama is available in PERFORMANCE VINYL - merging luxe design with the durability and technology offered by today's performance wallcoverings.

WASHABLE & DURABLE - Type II, 20 oz. vinyl suitable for contract, hospitality & residential use.

**COLORS:** 9

**BINDER:** PJ Contract Box

**STOCK:** USA

**BOLT SIZE:** 30 yds (27.4 m)

**MINIMUM:** 15 yds (13.7 m)

**ORDER INCREMENTS:** 5 yds (4.5 m)  
Cut Bolts Available

**WIDTH:** 54.5" (138.4 cm) Untrimmed  
Trims to 54" (137.2 cm)

**BACKING:** Non-Woven

**CLEANING CODE:** Type II Washable





# RAFFIA RETREAT

FRESH TAKE - New two-color woven RAINFOREST RAFFIA is paired with new colors of refined ISLAND RAFFIA and the boldly textured AFRICAN RAFFIA for a collection full of textural options.

HANDCRAFTED - Woven of only the highest quality raffia, materials are harvested, sorted, cleaned and dried before weaving even begins. Once woven, the collections are expertly laminated and treated with a stain repellent finish.

**COLORS:** 10 NEW Colors  
Rainforest Raffia - 5 Colors  
Island Raffia - 5 NEW Colors  
Existing - 20 Colors  
30 TOTAL

**BINDER:** House of Naturals

**STOCK:** NJ, USA

**BOLT SIZE:** 20-30 yds (18-27 m)

**MINIMUM:** 3 yds (2.7 m)

**ORDER INCREMENTS:** 3 yd (2.7 m)  
Cut Bolts Available

**WIDTH:** 36" (91.4 cm) Pretrimmed

**BACKING:** 1150-1154: HQ Recycled Paper  
3404-B, 1155-1158: Fabric

**CLEANING CODE:** Stain Repellent Finish



○—1153

○—1151

○—3404-B

○—1150

○—1155

○—1157

# HOW IT'S MADE

## - RAFFIA RETREAT -

Raffia is hand sorted, cleaned and dried before the weaving begins. Due to the nature of raffia, there may be a slight variance in texture and color. This is part of the inherent beauty of natural wallcoverings.

Woven of the highest quality raffia, only the top 20% of the crop is used.

For RAINFOREST RAFFIA, collection is yarn dyed then woven into a two-color design. AFRICAN RAFFIA is woven in its natural color and ISLAND RAFFIA is colored after weaving in our mill in Japan. For all collections, Japanese artisans take great care in the finishing process which includes:

- Steaming the raffia
- Straightening the raffia
- Lamination
- Applying stain repellent finish





○ 1664 SEPIA ON WHITE ISLAND RAFFIA

REPEAT: 17.625" V x 17.75" H (44.76 x 45 cm)





# KUBA CLOTH

ECLECTIC CHARM - Adventure in the art of traditional fabrics inspire a geometric yet organic print design with a rich cultural story.

HANDCRAFTED - A unique process using a laser cut gravure roller releases ink as it is rolled onto our handcrafted grounds for a more consistent print. Grounds include Canvas Linen, Chain Mail and Island Raffia.

**COLORS:** 6

**BINDER:** PJ Prints

**STOCK:** NJ, USA

**BOLT SIZE:** 12 yds (11 m)

**MINIMUM:** 12 yds (11 m)

**ORDER INCREMENTS:** 4 yds (3.6 m)  
Cut Bolts Available

**WIDTH:**

1660-1662: 37" (94 cm) Untrimmed | Trims to 35.5" (90.2 cm)

1663-1665: 36.5" (92.7 cm) Untrimmed | Trims to 35.5" (90.2 cm)

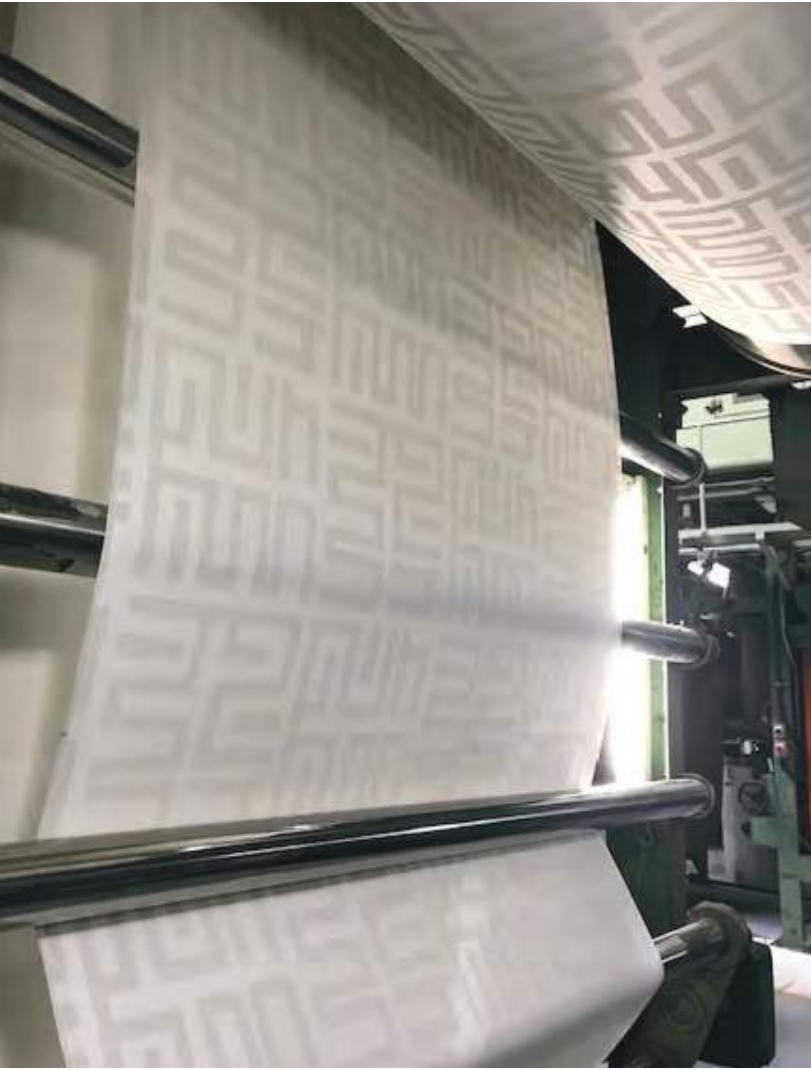
**BACKING:**

1660-1662: High Quality Paper

1663-1665: Fabric

**CLEANING CODE:** Water Repllent Finish





# HOW IT'S MADE

## - KUBA CLOTH -

Printed by artisans for a unique handcrafted effect.

A unique process using a laser cut gravure roller releases ink as it is rolled onto our handcrafted grounds for a more consistent print.

Printed on a variety of handcrafted grounds including Canvas Linen, Chain Mail and Island Raffia, the variety of texture and colors create a unique play with pattern and texture.

— 1520 HERITAGE TAN

REPEAT: Approx. 26.5" V x 17.75" H (67.3 x 45 cm)





# SAVANNA WEAWE

**ECLECTIC FLAIR** - A boldly scaled graphic pattern with a touch of tribal meets a fresh palette in this three-dimensional diamond design.

**HANDCRAFTED** - Paper is dyed prior to weaving, cut into thin strips and woven into a largely scaled, two-color diamond design that is virtually seamless. Meticulously laminated, this mix of a bold pattern with fresh colors creates a striking statement for the walls.

**COLORS:** 14

**BINDER:** Simply Seamless

**STOCK:** NJ, USA

**BOLT SIZE:** 12 yds (11 m)

**MINIMUM:** 12 yds (11 m)

**ORDER INCREMENTS:** 4 yds (3.6 m)  
Cut Bolts Available

**WIDTH:** 56" (142.24 cm) Untrimmed  
Trims to 54" (137 cm)

**BACKING:** Paper

**CLEANING CODE:** Wipe Gently





# SERENGETI WEAVE

**DREAM WEAVER** - An airy paperweave inspired by traditional craft basketry offers a classic weave full of dimension.

**HANDCRAFTED**- Two to four colors of paper yarns are dyed, cut into strips of varying widths and woven together. Carefully laminated, this paperweave is virtually seamless.

**COLORS:** 8

**BINDER:** Simply Seamless

**STOCK:** NJ, USA

**BOLT SIZE:** 12 yds (11 m)

**MINIMUM:** 12 yds (11 m)

**ORDER INCREMENTS:** 4 yds (3.6 m)  
Cut Bolts Available

**WIDTH:** Approx. 36" (91.4 cm) Pre-trimmed

**BACKING:** 100% Paper

**CLEANING CODE:** Wipe Gently







6310

6308

6309

6311

○ 2996 SUNSET PINK





# SAHARAN STRAW

**SANDS OF TIME** - Rustic Saharan sunsets and sights inspire a modern take on horizontal grasscloth weave.

**HANDCRAFTED** - Natural banana and cotton fibers are woven together and laminated atop a printed colored paper for a unique juxtaposition of modern art and an organic weave.

**COLORS:** 4

**BINDER:** House of Naturals

**STOCK:** NJ, USA

**BOLT SIZE:** 20-30 yds (18-27 m)

**MINIMUM:** 3 yds (2.7 m)

**ORDER INCREMENTS:** 3 yds (2.7 m)  
Cut Bolts Available

**WIDTH:** 37" (94 cm) Untrimmed

**BACKING:** Recycled Paper

**CLEANING CODE:** Stain Repellent Finish



# HOW IT'S MADE

## - SAHARAN STRAW -

The beauty of natural grasscloth meets innovative printing techniques.

Banana and cotton fibers are woven together in an open weave full of unique texture. Separately, the ground paper is printed with a two color abstract horizontal stripe reminiscent of modern brushstrokes.

The banana and cotton weave is stretched, then laminated atop the printed ground for a unique juxtaposition of modern art meets organic natural. Lastly, it is applied with an anti-fray and stain repellent finish for ease in installation.



○ — 6753 PENINSULA PATH

REPEAT: Approx. 52-54" V (Approx. 132-137cm)





# CAPE TOWN

**BOLD BASKETWEAVE** - The peaks and valleys of coastal Cape Town set the tone for a large-scale graphic basket weave design with a modern beach vibe.

**HANDCRAFTED** - Authentic water hyacinth is colored and hand-laid by artisans in a multi-step process to create a woven pattern that makes a dramatic wall statement.

**COLORS:** 6

**BINDER:** House of Naturals

**STOCK:** NJ, USA

**BOLT SIZE:** 12 yds (11 m)

**MINIMUM:** 12 yds (11 m)

**ORDER INCREMENTS:** 4 yds (3.6 m)  
Cut Bolts Available

**WIDTH:** 36" (91.4 cm) Pre-Trimmed

**BACKING:** High Quality Paper

**CLEANING CODE:** Wipe Gently







# HOW IT'S MADE

## - CAPE TOWN -

Authentic water hyacinth plants are harvested, then stalks are cleaned, bound and left to dry in the sun.

Hyacinth is flattened and laminated atop a paper substrate. Artisans then apply a color wash in various applications – a dry brush technique, a light color wash and overall painted application to the hyacinth ground for different effects. Due to the natural characteristics of the water hyacinth, how it absorbs the dye and the type of color application, some colors exude a beautiful watercolor effect with a variance of highs and lows, while others have a more saturated look.

After coloring, the hyacinth ground is hand cut into long strips in varying widths. These strips are hand-laid by artisans into a large scale basket weave design atop a white non-woven backing paper.

Lastly, a special pressing process is completed and finished with a protective clear coat.

# SUMMER 2020 COMPLIMENTS

CHECK OUT THE LIST BELOW FOR PJ'S RECOMMENDED COMPLIMENTS TO THE NEW SPRING 2020 LAUNCH.  
FOR EXAMPLE: IF THEY LOVE TWEED, PLEASE SHARE SAVILE SUITING.



MOSAIC MAMBA



DECO HEMP



VINYL SNAKESKIN



MANILA HEMP



CAPE TOWN



RAFFIA RETREAT



ST. BART'S SERENITY



PALAZZO



HUSK



ISLES OF RAFFIA



ISLAND RAFFIA



MAX'S METALLIC  
RAFFIA II

# SUMMER 2020 COMPLIMENTS

CHECK OUT THE LIST BELOW FOR PJ'S RECOMMENDED COMPLIMENTS TO THE NEW SPRING 2020 LAUNCH.  
 FOR EXAMPLE: IF THEY LOVE TWEED, PLEASE SHARE SAVILE SUITING.



SAVANNA WEAVE



DIAMOND WEAVE II



MARFA WEAVE



ALL WOUND UP



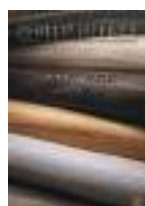
VINYL ZEBRAWOOD



VINYL CHEVRON CHIC



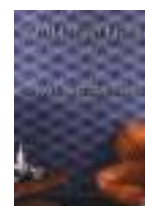
VINYL AGAINST THE GRAIN



VINYL HUSK



VINYL CROCODILE CLUTCH



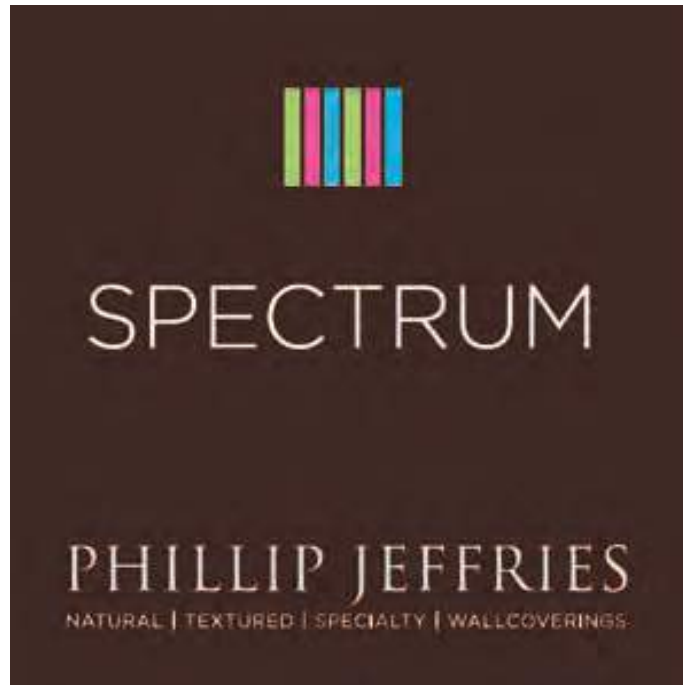
VINYL WOVEN SISAL



VINYL MANILA HEMP

# SUMMER 2020 SPECTRUM ADDITIONS

2 NEW ADDITIONS TO THE SPECTRUM BINDER



BROWN 2



GREEN 2

# SUMMER 2020 WOW SAMPLES



WOW samples for 6 existing best-selling digitals are now available.

Beyond – 7200

Bloom – 7191-L

Blossom – 6402

Blur – 7800

Fade – 7226

Serenity – 7378

## Distribution Reminder

WOW samples are sent out automatically with corresponding sample orders.

Only Sales Representatives are given access to order WOW samples online.

# SUMMER 2020 SEAMING CHART

## SEAMING 101: What to Expect

We understand that the appearance of seams is a leading deciding factor when selecting a wallcovering, and there is nothing worse than a disappointed client. We all work so hard to create beautiful spaces and we want our clients to be thrilled with their investment.

What if we could give you the tools to speak confidently when asked about Seaming and Paneling?  
Now....what if you and your clients didn't have to guess?

To this end, we have created a new rating system that gives an indication of the final effect of our wallcoverings once professionally installed.

We have divided our collections into 3 categories and have indicated below some of the main factors that contribute to the appearance of seams:

### I – Virtually Seamless



Vertical Weaves  
Strings  
Balanced Warp & Weft  
Matched Patterns & Mosaics  
Yarn Dyed

### II – Subtle Seaming



Randomized Patterns  
Overall Naturals like Cork  
Overall Textiles like Linen  
Most Prints and Digitals

### III – Panels Beautifully



Horizontal Weaves  
Slubby Textures  
Thick Wovens  
Handcrafted, Ombré  
Piece Dyed

# SUMMER 2020 SEAMING CHART

Phillip Jeffries is pleased to officially launch our Seaming Chart to the Sales Team with Summer Launch:

SUMMER 2020	Virtually Seamless	Subtle Seaming	Panels Beautifully
Cape Town			III
Island Raffia			III
Kuba Cloth		II	
Mosaic Mamba		II	
Rainforest Raffia			III
Safari - Cheetah Cloth		II	
Safari - Zebra Cloth		II	
Saharan Straw			III
Savanna Weave	I		
Serengeti Weave	I		
Sunwashed Linen		II	
Vinyl Canvas Linens	I		
Vinyl Chevron Chic	I		
Vinyl Zebrawood	I		

## How to Access The Seaming Chart:

- Summer 2020 WebDAM Folder (available on or before launch day)
- Your Phillip Jeffries customer service representative.
- Summer 2020 Seaming values can be found on romance labels affixed to Presentation pieces in your Repkit
- Coming Fall 2020: Seaming values on client sales tools (Tipcards, Memos, Wings)



# SAVANNA

IMAGES FOR YOU TO ENJOY!



# MOSAIC MAMBA

○ — 4248 GREY CHARMER



# MOSAIC MAMBA

○ — 4248 GREY CHARMER



# SAFARI - CHEETAH CLOTH

○ 5389 SPRINTER SANDS



# SAFARI - ZEBRA CLOTH

○ — 5390 GREVY GREY





# SUNWASHED LINEN

○ — 1593 FAINT GREEN



# VINYL CHEVRON CHIC

○—6709 CHAMELEON GREEN



# VINYL ZEBRAWOOD

○ — 7872 FARMHOUSE BROWN





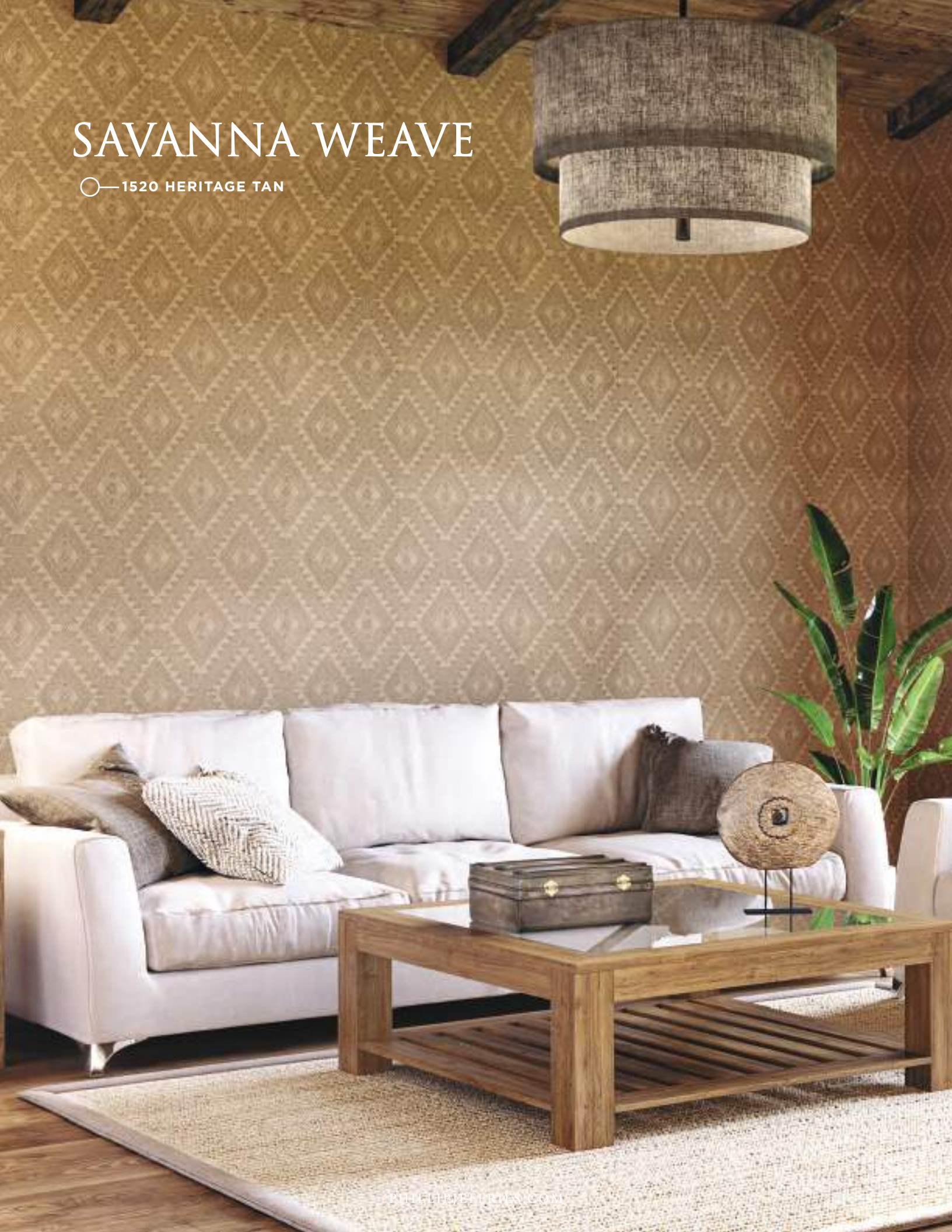
# KUBA CLOTH

— 1664 SEPIA ON WHITE ISLAND RAFFIA



# SAVANNA WEAVE

— 1520 HERITAGE TAN





# SAHARAN STRAW

○—2996 SUNSET PINK



# CAPE TOWN

○ 6753 PENINSULA PATH



# CAPE TOWN

○ — 6753 PENINSULA PATH

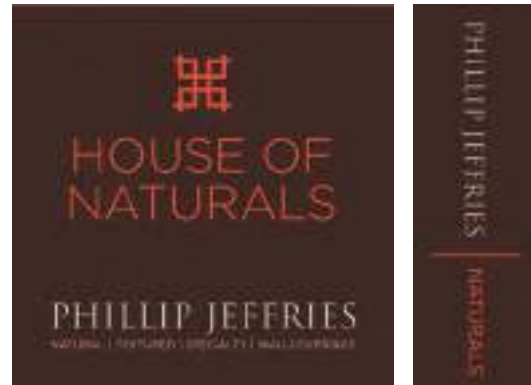




# SUMMER 2020 BINDERS & BOXES

## NATURALS

Grasscloths, Hemps, Raffias, Arrowroots, Jutes, Metallic Grasses, Corks, Banana Barks, Water Hyacinths, Rice Papers, Abacas.



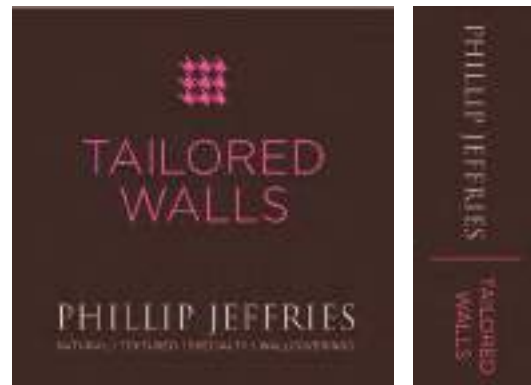
## SEAMLESS

Virtually seamless paper weaves.



## TEXTURED

Fine Silks, Linens, Chunky Knits, Suedes, Velvets, Herringbones, Tweeds, Plaids, Woolen Textures.



## SPECIALTY

Metallic Leaves, Raised Reliefs & Rivets, Embroideries, and Wood Veneers. Many items within this binder are also a part of our PJ MASH-UP program, allowing the client to customize our specialty items based on their needs.





# SUMMER 2020 BINDERS & BOXES



## DIGITALS

Cutting edge printing technology on a variety of natural and performance vinyl grounds creates instant artwork for the walls. Items within this binder are also a part of our PJ MASH-UP program, allowing the client to customize our digitals based on their needs.



## PRINTS

Handscreened prints on a variety of natural and performance vinyl grounds. Items within this binder are also a part of our PJ MASH-UP program, allowing the client to customize our prints based on their needs.



## COLOR SOURCE

Your source for color ranging across all of our PJ binder categories.



## VINYL

Type II, 20oz. performance vinyl. Suitable for contract, hospitality and residential use. All tipcards are housed in a PJ CONTRACT box.





# HOUSE OF NATURALS

ABACA MIST\*

AFRICAN RAFFIA

ARROWROOT REVIVAL

BERMUDA HEMP II\*

BRAIDED WALLS

BURLAP SAFARI

CAPE TOWN - *NEW\**

CRACKED CORK

DECO HEMP\*

ENCHANTED WOODS\*

EPI LEATHER

EXTRA FINE ARROWROOT\*

GLAM GRASS II\*

GLAZED ABACA

GRASS ROOTS\*

HUSK\*

ISLAND RAFFIA

ISLES OF RAFFIA\*

JUICY JUTE II\*

KNOCK ON WOOD

MANILA HEMP: ANNIVERSARY EDITION\*

MAX'S METALLIC RAFFIA II\*

PASTEL HEMP

PATHWAYS

PEAK CHIC

RAFFIA RETREAT - *NEW\**

RAFFIA REVOLUTION

SAHARAN STRAW - *NEW\**

SAINT GERMAIN HEMP II\*

SCORCHED

SHORELINE GRASS\*

SKYSCAPES

SOHO HEMP II\*

ST. BARTS SERENITY\*

TOTALLY TATAMI

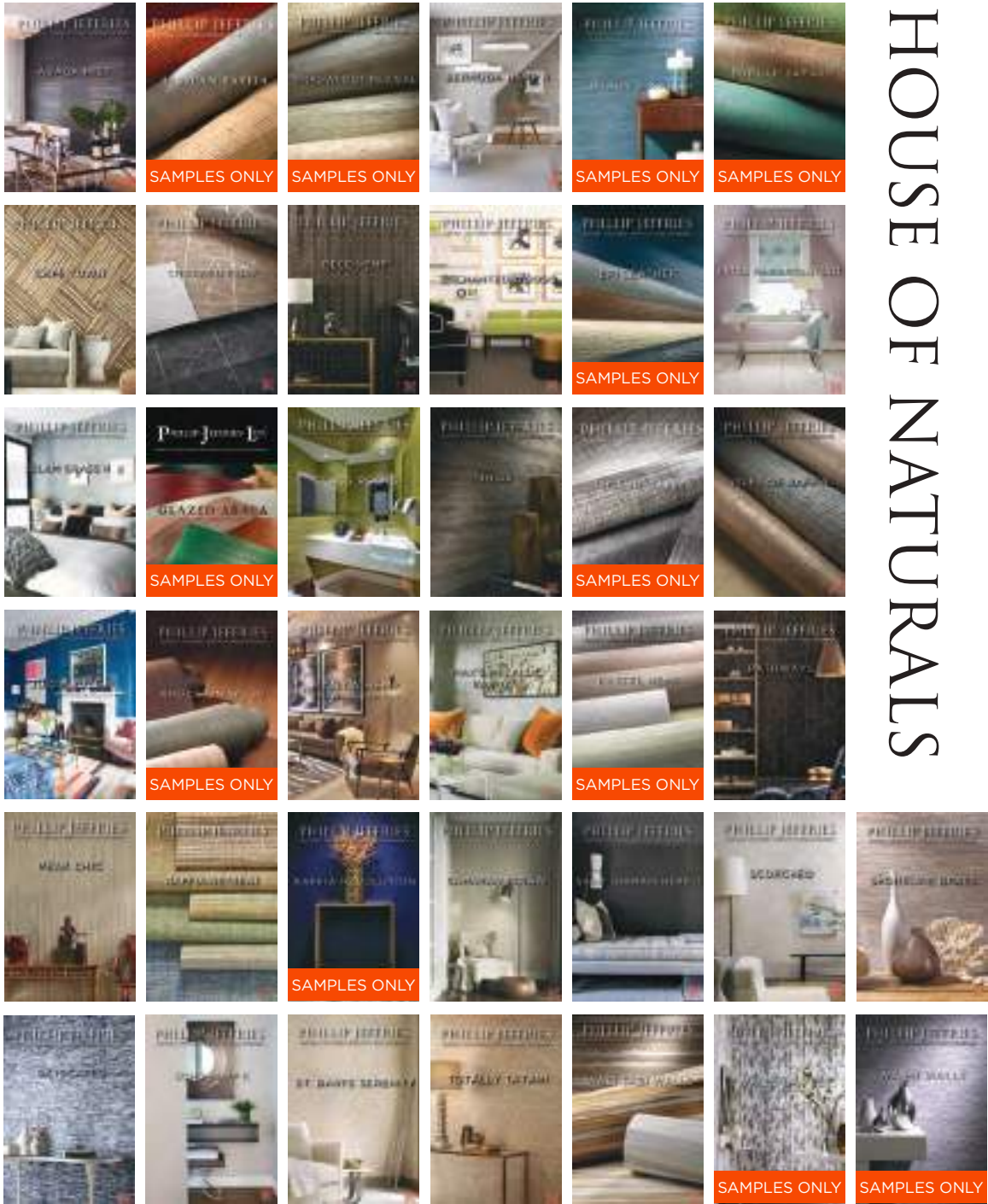
WABI SABI WALLS

WALLS OF FEZ

WASHI WALLS

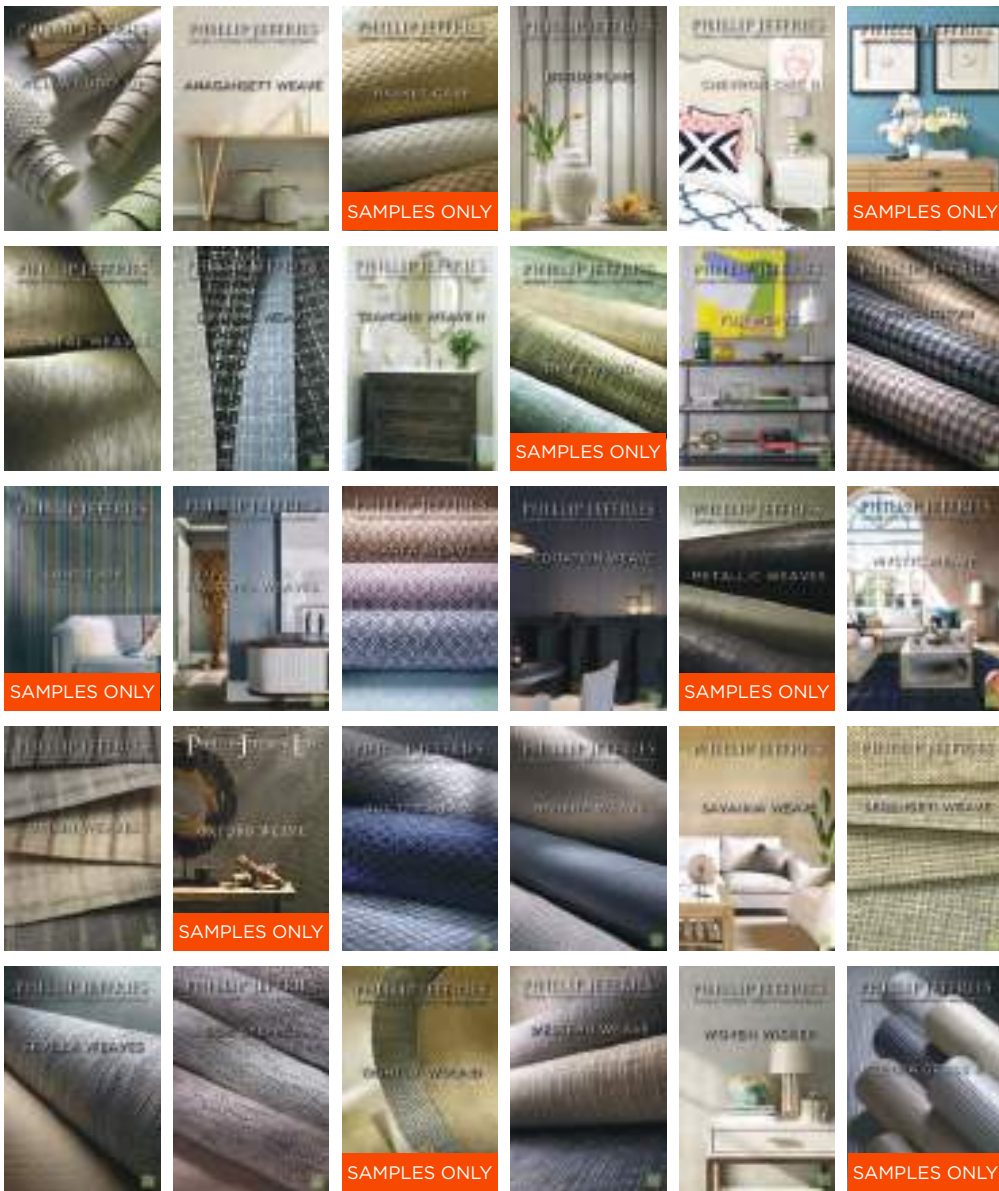
SAMPLES ONLY: CARDS ARE NO LONGER AVAILABLE, BUT ITEMS ARE STILL CURRENT TO BE SAMPLED AND PURCHASED.

# HOUSE OF NATURALS



**SAMPLES ONLY:** CARDS ARE NO LONGER AVAILABLE, BUT ITEMS ARE STILL CURRENT TO BE SAMPLED AND PURCHASED.

# SIMPLY SEAMLESS



**SAMPLES ONLY:** CARDS ARE NO LONGER AVAILABLE, BUT ITEMS ARE STILL CURRENT TO BE SAMPLED AND PURCHASED.



# SIMPLY SEAMLESS

ALL WOUND UP\*

AMAGANSETT WEAVE\*

BASKET CASE

BORDERLINE

CABANA WEAVES

CHEVRON CHIC II\*

CHROMATIC

COASTAL WEAVES

COUTURE WEAVE\*

DIAMOND WEAVE II\*

DRIFTWOOD\*

FUJI WEAVE\*

KENSINGTON

LONGITUDE

MALDIVES WEAVES\*

MARFA WEAVE\*

MEDITATION WEAVE\*

METALLIC WEAVES\*

MYSTIC WEAVE

ORIGIN WEAVES\*

OXFORD WEAVE

QUILTED WEAVE

RIVIERA WEAVE\*

SAVANNA WEAVE - *NEW\**

SERENGETI WEAVE - *NEW\**

SEVILLA WEAVES\*

SIDE STEPPED\*

TIGHTLY WOUND

WESTERN WEAVE

WOVEN WICKER

ZEBRA GRASS II

SAMPLES ONLY: CARDS ARE NO LONGER AVAILABLE, BUT ITEMS ARE STILL CURRENT TO BE SAMPLED AND PURCHASED.



# TAILORED WALLS

ABACA BREEZE

ABACA HARVEST

ABACA SHADOWS

AMALFI & COMO SILK II\*

BELLA VISTA

BOUCLE LANE

BRUSHSTROKE SILK\*

CALYPSO LINEN

CHAIN MAIL

CHAMPS-ÉLYSÉES

CHATEAU LINEN

COMMON THREADS

DAKOTA LINEN

ELI'S EPIC ABACA

FLORENCIA

FRINGED

GAUCHO CLOTH

GOLD COAST SILK\*

HANDIRA CLOTH

HARMONY HERRINGBONE\*

HERRINGBONE II\*

HORSEHAIR

INTERTWINED

KABUKI SUEDE

LATITUDE SILK

LEO'S LUXE LINEN II\*

LINEN AND TWEED

LOVE IT LINEN\*

MALIBU KNITS

MERIDIAN STRIPE

NANTUCKET YARNS & CLOTH

NEWPORT THREADS\*

SAFARI - NEW\*

SATEEN\*

SAVILE SUITING\*

SEASIDE LINEN\*

SILK & ABACA II\*

SILK HALL\*

SILKY STRINGS: ANTHOLOGY\*

SILK ROAD II

SOLSTICE SILK

STAR DUST SILK

STONEWASHED LINEN\*

STREAMLINED\*

SUEDE LOUNGE\*

SUIT YOURSELF\*

SUNSET SILK\*

SUNWASHED LINEN - NEW\*

TAILORED LINENS II\*

VELVET WALLS

WATERMARK

WELL DRESSED WALLS

WOVEN PETALS

SAMPLES ONLY: CARDS ARE NO LONGER AVAILABLE, BUT ITEMS ARE STILL CURRENT TO BE SAMPLED AND PURCHASED.

# TAILORED WALLS



**SAMPLES ONLY:** CARDS ARE NO LONGER AVAILABLE, BUT ITEMS ARE STILL CURRENT TO BE SAMPLED AND PURCHASED.

# ARTISANS GUILD



SAMPLES ONLY: CARDS ARE NO LONGER AVAILABLE, BUT ITEMS ARE STILL CURRENT TO BE SAMPLED AND PURCHASED.





# ARTISANS GUILD

ABSTRACT METAL

AGAINST THE GRAIN\*

ALHAMBRA

ALIGNED\*

ARTISTRY COLLECTION

AVIATOR

CHAIN REACTION

CHAMPAGNE WISHES

COFFERED WOOD\*

CONCRETE WASHI II\*

DAVINCI

DECO WOOD

ENLIGHTENMENT\*

ETCHED

FLOORED

FRAMED

FRETWORK\*

GEOLOGY

GILDED AGE II

GLAZIÉR

GRANITE II

GRECIAN SQAURES

IT'S RIVETING\*

KINSHIP

LIGHTNING STRIKES

LILIES

MARBELOUS

MARRAKESH METAL

METALUXE II\*

METROPOLITAN MARBLE\*

MODERN MOSAIC

MONDRIAN

MOSAIC MAMBA - *NEW\**

NAILED IT\*

ORNAMENTAL

OUT FOR A SPIN

PALAZZO\*

PARTHENON

PICASSO

PISCES

QUARTZ

REFLECTIONS\*

REMBRANDT

RENOIR

RIVETS

ROCK STAR

SANCTUARY\*

SCULPTED WOOD\*

SHAGREEN BLOC

STUDS & STRIPES

TERRAZZO\*

TIDAL STRIPE

TINSELTOWN

TRELLIS

URBAN VIEWS

WATERCOLOR WASHI

WILD WOODS

WOVEN WOOD

YACHT CLUB II\*

**SAMPLES ONLY:** CARDS ARE NO LONGER AVAILABLE, BUT ITEMS ARE STILL CURRENT TO BE SAMPLED AND PURCHASED.



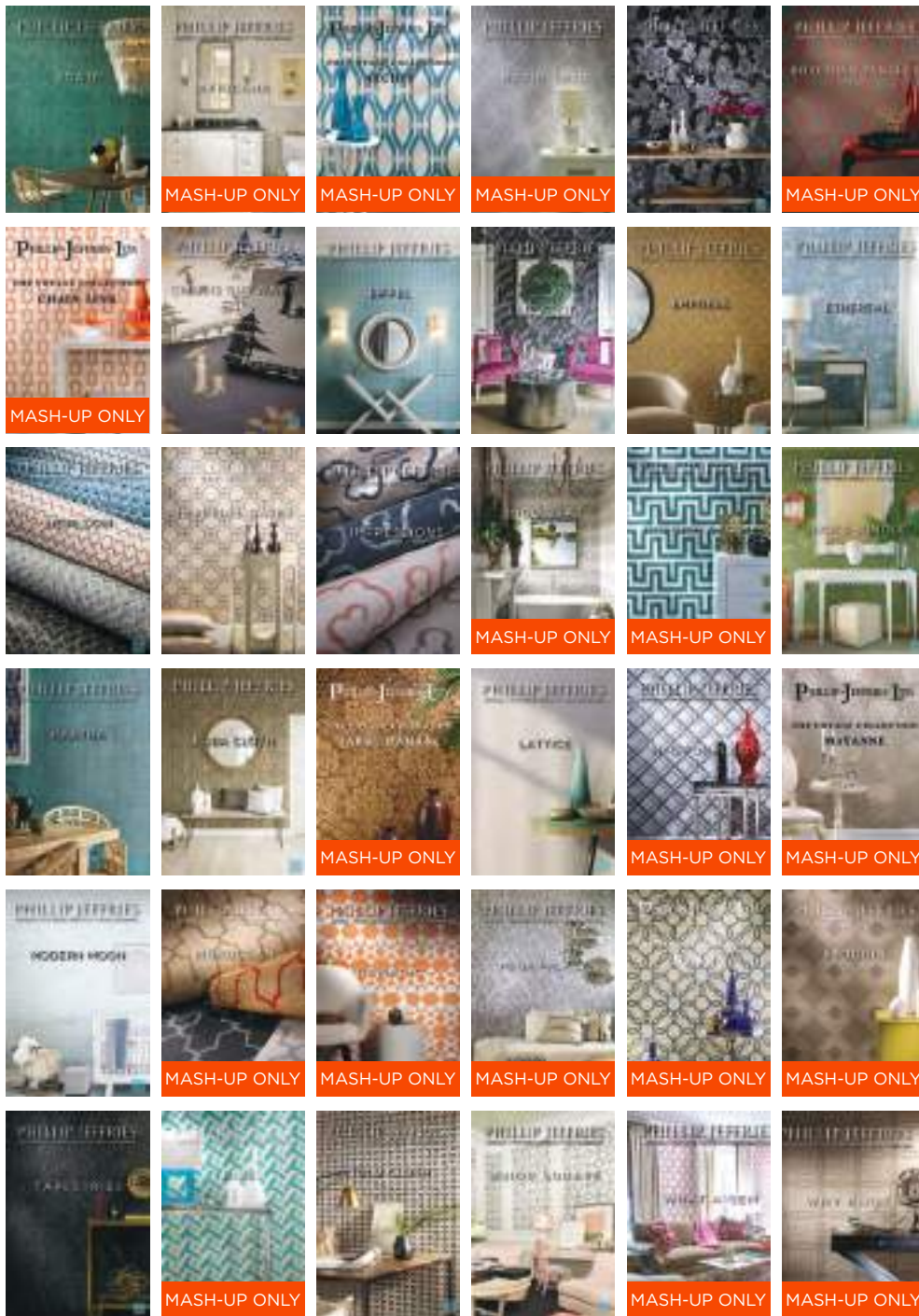
# GALLERY

ARBORETUM\*  
BEYOND\*  
BLOOM\*  
BLOSSOM\*  
BLUR\*  
FADE\*  
FLIGHT\*  
HAVANA  
MIST\*  
PASSAGES  
SERENITY\*  
SHANGRI-LA\*  
SMOKE  
SPLASH\*  
WILDFLOWERS  
WISH\*



# GALLERY

# PJ PRINTS



**MASH-UP ONLY:** CARDS ARE NO LONGER AVAILABLE, BUT ITEMS ARE STILL CURRENT TO BE PURCHASED THROUGH OUR PJ MASH-UP PROGRAM.



# PJ PRINTS

AGATE\*

AFRICANA

ARCHES

BATIK CHIC

BOHEMIA\*

BOHEMIAN BANGLES

CHAIN LINK

CHINOIS OUR WAY II\*

EIFFEL\*

ELLIE'S VIEW\*

EMPRESS

ETHEREAL\*

HEIRLOOM

IMPERIAL GATES\*

IMPRESSIONS

INDO IKAT

IT'S GREEK TO ME

JACK'S JUNGLE\*

KANTHA\*

KUBA CLOTH - *NEW*\*

LARGE DAMASK

LATTICE\*

MAD FOR PLAID

MAYANNE

MODERN MOON\*

MOROCCAN

NOMADIC\*

PEÑA PALACE

RINGS

SEQUOIA

TAPESTRIES\*

TEASE

TULU CLOTH\*

UNION SQUARE\*

WHAT A GEM

WHY KNOT

SAMPLES ONLY: CARDS ARE NO LONGER AVAILABLE, BUT ITEMS ARE STILL CURRENT TO BE SAMPLED AND PURCHASED.

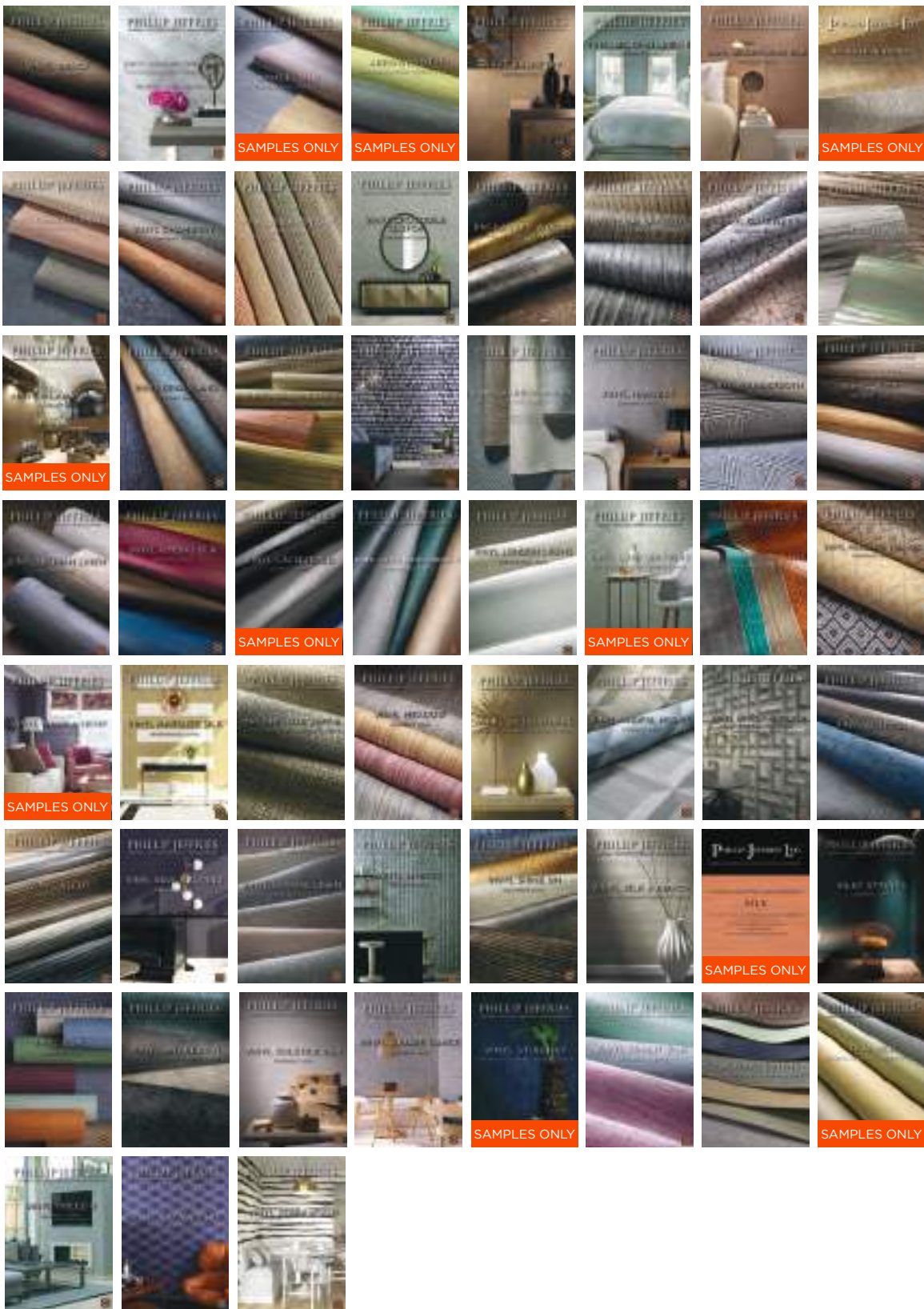


# PJ CONTRACT

ABACA\*  
AGAINST THE GRAIN\*  
AMALFI SILK  
ARROWROOT II  
BASKETRY\*  
BELGIAN LINEN II\*  
BRUSHSTROKE SILK  
BURLAP AND HEMP  
CANVAS LINENS - NEW\*  
CHAMBRAY  
CHEVRON CHIC - NEW\*  
CROCODILE CLUTCH\*  
ENCHANTED WOODS\*  
GALVANIZED\*  
GATEWAY  
GILDED AGE  
GLAM GRASS\*  
GRASSLAND\*  
GRASS ROOTS  
GREAT WALL  
HABERDASHERY\*  
HARVEST  
HOUNDSTOOTH  
HUSK  
IBERIAN LINEN\*  
KIMONO SILK  
LACQUERED  
LEO'S LUXE LINENS II\*  
LONDON LINENS\*  
LUXE LEATHER  
MADAGASCAR RAFFIA\*  
MANILA HEMP\*  
MARQUEE SILK\*  
MAX'S METALLIC RAFFIA\*  
MEADOW  
METALWORKS  
MINDFUL MOSAIC\*  
MIRROR MIRROR II\*  
OSTRICH  
REEDS  
SAVILE SUITING  
SEASIDE LINEN\*  
SHIBORI\*  
SHINE ON  
SILK & ABACA\*  
SILK ROAD  
SILKY STRINGS\*  
SISAL\*  
SNAKESKIN  
SOLSTICE SILK\*  
SQUARE DANCE\*  
STINGRAY  
SUNLIT SILK\*  
TAILORED LINENS\*  
THAI SILK  
TWEED II  
WOVEN SISAL  
ZEBRAWOOD - NEW\*

SAMPLES ONLY: CARDS ARE NO LONGER AVAILABLE, BUT ITEMS ARE STILL CURRENT TO BE SAMPLED AND PURCHASED.

# PJ CONTRACT



**SAMPLES ONLY:** CARDS ARE NO LONGER AVAILABLE, BUT ITEMS ARE STILL CURRENT TO BE SAMPLED AND PURCHASED.

# SPECTRUM







# SPECTRUM

BEIGE

BLACK

BLUE

DARK BLUE

BROWN 1

BROWN 2 - *NEW\**

GREEN 1

GREEN 2 - *NEW\**

GREIGE

GREY 1

GREY 2

METALLIC

PINK

PURPLE

RED/ORANGE

TAN 1

TAN 2

TURQUOISE 1

TURQUOISE 2

WHITE 1

WHITE 2

WHITE 3

YELLOW / CARAMEL 1

YELLOW / CARAMEL 2

# SUMMER 2020

COLLECTIONS SUMMARY - 103 NEW SKUS

COLLECTION	WIDTH	MINIMUM
MOSAIC MAMBA	Untrimmed / Trims to Approx. 91.4 cm	7.3 m
SAFARI		
Cheetah Cloth	Untrimmed / Trims to Approx. 145.4 cm	3.6 m
Zebra Cloth	Untrimmed / Trims to Approx. 146 cm	3.6 m
SUNWASHED LINEN	91.4 cm Pre-trimmed	11 m
VINYL CANVAS LINENS	132-137 cm Untrimmed	13.7 m
VINYL CHEVRON CHIC	132-137 Untrimmed / Trims to 127-132 cm	13.7 m
VINYL ZEBRAWOOD	138.4 cm Untrimmed / Trims to 137.2 cm	13.7 m
RAFFIA RETREAT		
Island Raffia	91.4 cm Pre-trimmed	2.7 m
Rainforest Raffia	91.4 cm Pre-trimmed	2.7 m
KUBA CLOTH		
1660-1662	94 cm Untrimmed / Trims to 90.2 cm	11 m
1663-1665	92.7 cm Untrimmed / Trims to 90.2 cm	11 m
SAVANNA WEAVE	142.24 cm Untrimmed / Trims to 137 cm	11 m
SERENGETI WEAVE	Approx. 91.4 cm Pre-trimmed	11 m
SAHARAN STRAW	94 cm Untrimmed	2.7 m
CAPE TOWN	91.4 cm Pre-trimmed	11 m



PHILLIP JEFFRIES

[PHILLIPJEFFRIES.COM](http://PHILLIPJEFFRIES.COM)