



Goodrich Global
SINCE 1983

ARTISTIC

Exclusivewall

www.goodrichglobal.com



Goodrich Global
SINCE 1983



Arcturus

COLLECTION

VAHALLAN

HAND-PAINTED WALL COVERINGS

PRODUCT SPECIFICATION

FORMAT

Full Panels

AVAILABLE SIZE

Butt-seam Panels

Width : 30"

Lengths : 8 - 15ft (Ordered in 1ft increments)

(Horizon line position can be altered to the height in which you want. Please specify when ordering where you want the line positioned on the panel)

FIRE RATING

ASTM Class A

MINIMUM ORDER

50 sqft = 4.65 sqm

(Custom lengths and colors available upon request)

Our wallpapers are hand-painted to order by skilled artisans. Due to the manufacturing process, color variations are to be expected and add to the beauty and character of your finished wall.

TIPS ON HOW TO TAKE CARE OF YOUR WALLCOVERING

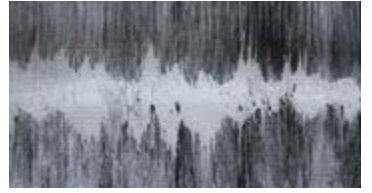
- Remove ordinary household dirt or smudges with mild soap and warm water.
- Clean with clean water and cleaner from top down with a sponge. When cleaning is completed, clean the wall again to remove any residual cleaner.
- Many cleaners will deteriorate with time and leave an amber stain on the wallcovering surface.
- Dry the surface with a soft, lint-free cloth or towel with a blotting action rather than rubbing.
- For a more difficult surface stain, use a stronger detergent according to the manufacturer's instructions.
- DO NOT use steel wool or powdered abrasive cleaner as it will cause undesirable appearance on the surface.
- DO NOT use active solvent-type cleaning preparations, such as nail polish remover, tar and bug removers, et cetera, because they will remove the surface paint and wallcovering's protective finish.



BAJADA



PENUMBRA



SABATTIER



TECOPA



UYUNI

INSTALLATION METHOD

- Panels hung vertically, butt-seam panels

PATTERN ORIENTATION

- None







Goodrich Global
SINCE 1983

Broken Lines Straight

C O L L E C T I O N

VAHALLAN

HAND-PAINTED WALL COVERINGS

PRODUCT SPECIFICATION

FORMAT

Tiles

AVAILABLE SIZE

Squares

29" x 29"

FIRE RATING

ASTM Class B

MINIMUM ORDER

50 sqft = 4.65 sqm

(Custom lengths and colors available upon request)

Our wallpapers are hand-painted to order by skilled artisans. Due to the manufacturing process, color variations are to be expected and add to the beauty and character of your finished wall.

TIPS ON HOW TO TAKE CARE OF YOUR WALLCOVERING

- Remove ordinary household dirt or smudges with mild soap and warm water.
- Clean with clean water and cleaner from top down with a sponge. When cleaning is completed, clean the wall again to remove any residual cleaner.
- Many cleaners will deteriorate with time and leave an amber stain on the wallcovering surface.
- Dry the surface with a soft, lint-free cloth or towel with a blotting action rather than rubbing.
- For a more difficult surface stain, use a stronger detergent according to the manufacturer's instructions.
- DO NOT use steel wool or powdered abrasive cleaner as it will cause undesirable appearance on the surface.
- DO NOT use active solvent-type cleaning preparations, such as nail polish remover, tar and bug removers, et cetera, because they will remove the surface paint and wallcovering's protective finish.



ADONIS STRAIGHT



DESPENA STRAIGHT



FLAT WHITE STRAIGHT



NESO STRAIGHT



PLUTO STRAIGHT

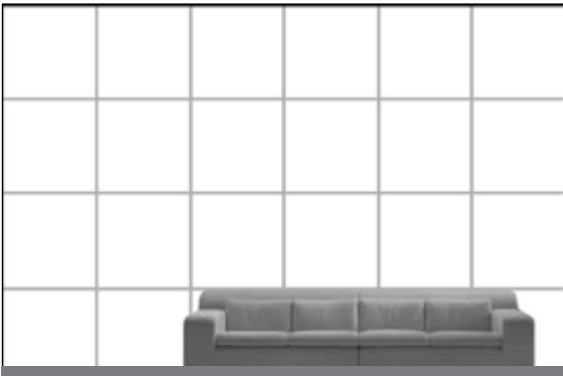


SAROSH STRAIGHT

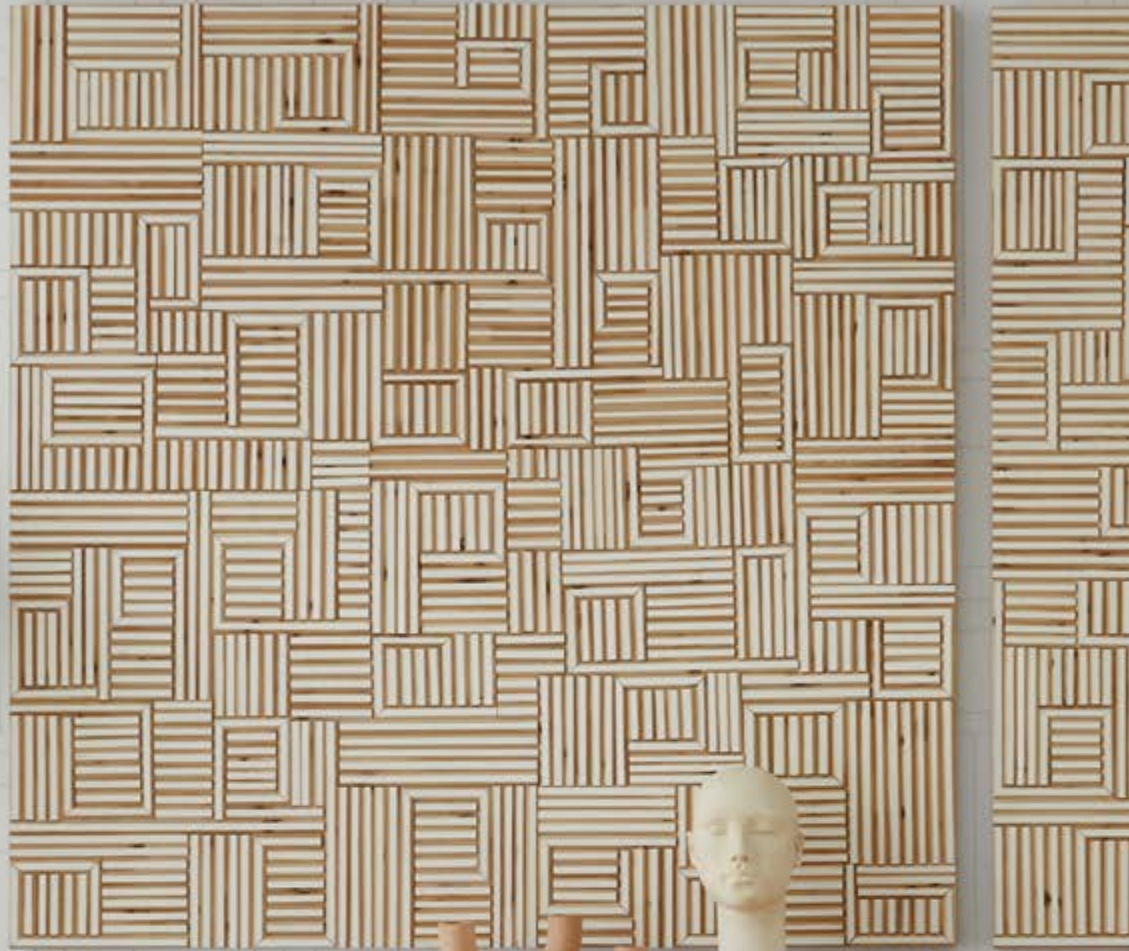
INSTALLATION METHOD

■ Butt-seam tiles

PATTERN ORIENTATION



Square Tiles Stacked





Goodrich Global
SINCE 1983

Cement
COLLECTION
VAHALLAN
HAND-PAINTED WALL COVERINGS

PRODUCT SPECIFICATION

FORMAT

Tiles

AVAILABLE SIZE

Rectangles

9" x 29"
18" x 29"
14" x 42"
14" x 49"

Squares

14.5" x 14.5"
29" x 29"

FIRE RATING

ASTM Class A

MINIMUM ORDER

50 sqft = 4.65 sqm
(Custom lengths and colors available upon request)

Our wallpapers are hand-painted to order by skilled artisans. Due to the manufacturing process, color variations are to be expected and add to the beauty and character of your finished wall.

TIPS ON HOW TO TAKE CARE OF YOUR WALLCOVERING

- Remove ordinary household dirt or smudges with mild soap and warm water.
- Clean with clean water and cleaner from top down with a sponge. When cleaning is completed, clean the wall again to remove any residual cleaner.
- Many cleaners will deteriorate with time and leave an amber stain on the wallcovering surface.
- Dry the surface with a soft, lint-free cloth or towel with a blotting action rather than rubbing.
- For a more difficult surface stain, use a stronger detergent according to the manufacturer's instructions.
- DO NOT use steel wool or powdered abrasive cleaner as it will cause undesirable appearance on the surface.
- DO NOT use active solvent-type cleaning preparations, such as nail polish remover, tar and bug removers, et cetera, because they will remove the surface paint and wallcovering's protective finish.



ALLIANCE



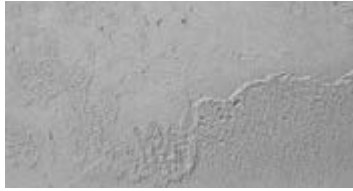
BLUSH



COALESCE



REBUS

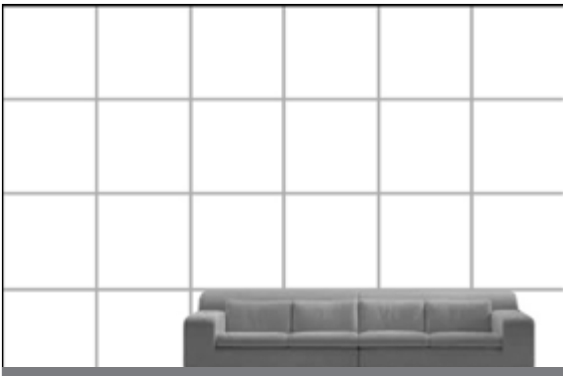


UNIFY

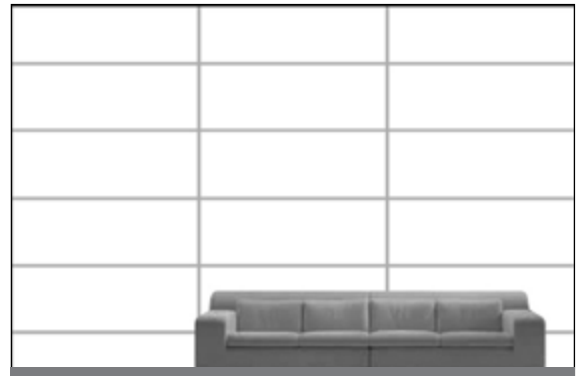
INSTALLATION METHOD

■ Butt-seam tiles

PATTERN ORIENTATION



Square Tiles Stacked



Rectangle Tiles Horizontally Stacked







Goodrich Global
SINCE 1983

Convergence

C O L L E C T I O N

VAHALLAN

HAND-PAINTED WALL COVERINGS

PRODUCT SPECIFICATION

FORMAT

Full Panels

AVAILABLE SIZE

Full Panels

Width : 30" (28" Recommended usable)

Lengths : 8 - 15ft (Ordered in 1ft increments)

FIRE RATING

ASTM Class A

MINIMUM ORDER

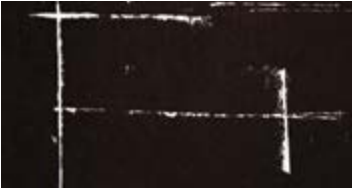
50 sqft = 4.65 sqm

(Custom lengths and colors available upon request)

Our wallpapers are hand-painted to order by skilled artisans. Due to the manufacturing process, color variations are to be expected and add to the beauty and character of your finished wall.

TIPS ON HOW TO TAKE CARE OF YOUR WALLCOVERING

- Remove ordinary household dirt or smudges with mild soap and warm water.
- Clean with clean water and cleaner from top down with a sponge. When cleaning is completed, clean the wall again to remove any residual cleaner.
- Many cleaners will deteriorate with time and leave an amber stain on the wallcovering surface.
- Dry the surface with a soft, lint-free cloth or towel with a blotting action rather than rubbing.
- For a more difficult surface stain, use a stronger detergent according to the manufacturer's instructions.
- DO NOT use steel wool or powdered abrasive cleaner as it will cause undesirable appearance on the surface.
- DO NOT use active solvent-type cleaning preparations, such as nail polish remover, tar and bug removers, et cetera, because they will remove the surface paint and wallcovering's protective finish.



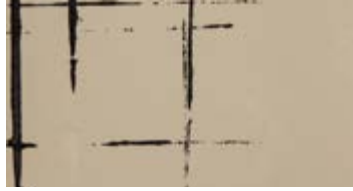
DECIPHER



ENIGMA



PLEXUS



TERSECO

INSTALLATION METHOD

- Panels hung vertically, double-cut or trim on site

PATTERN ORIENTATION

- Random pattern repeat







Goodrich Global
SINCE 1983

Crushed Metal

COLLECTION

VAHALLAN
HAND-PAINTED WALL COVERINGS



PRODUCT SPECIFICATION

FORMAT

Full Panels
Tiles

AVAILABLE SIZE

Full Panels

Width : 30" (28" Recommended usable)
Lengths : 8 - 15ft (Ordered in 1ft increments)

Rectangles

9" x 29"
18" x 29"
14" x 42"
14" x 49"

Squares

14.5" x 14.5"
29" x 29"

FIRE RATING

ASTM Class A

MINIMUM ORDER

50 sqft = 4.65 sqm
(Custom lengths and colors available upon request)

Our wallpapers are hand-painted to order by skilled artisans. Due to the manufacturing process, color variations are to be expected and add to the beauty and character of your finished wall.

TIPS ON HOW TO TAKE CARE OF YOUR WALLCOVERING

- Remove ordinary household dirt or smudges with mild soap and warm water.
- Clean with clean water and cleaner from top down with a sponge. When cleaning is completed, clean the wall again to remove any residual cleaner.
- Many cleaners will deteriorate with time and leave an amber stain on the wallcovering surface.
- Dry the surface with a soft, lint-free cloth or towel with a blotting action rather than rubbing.
- For a more difficult surface stain, use a stronger detergent according to the manufacturer's instructions.
- DO NOT use steel wool or powdered abrasive cleaner as it will cause undesirable appearance on the surface.
- DO NOT use active solvent-type cleaning preparations, such as nail polish remover, tar and bug removers, et cetera, because they will remove the surface paint and wallcovering's protective finish.



ARTEMIDE



AZERI

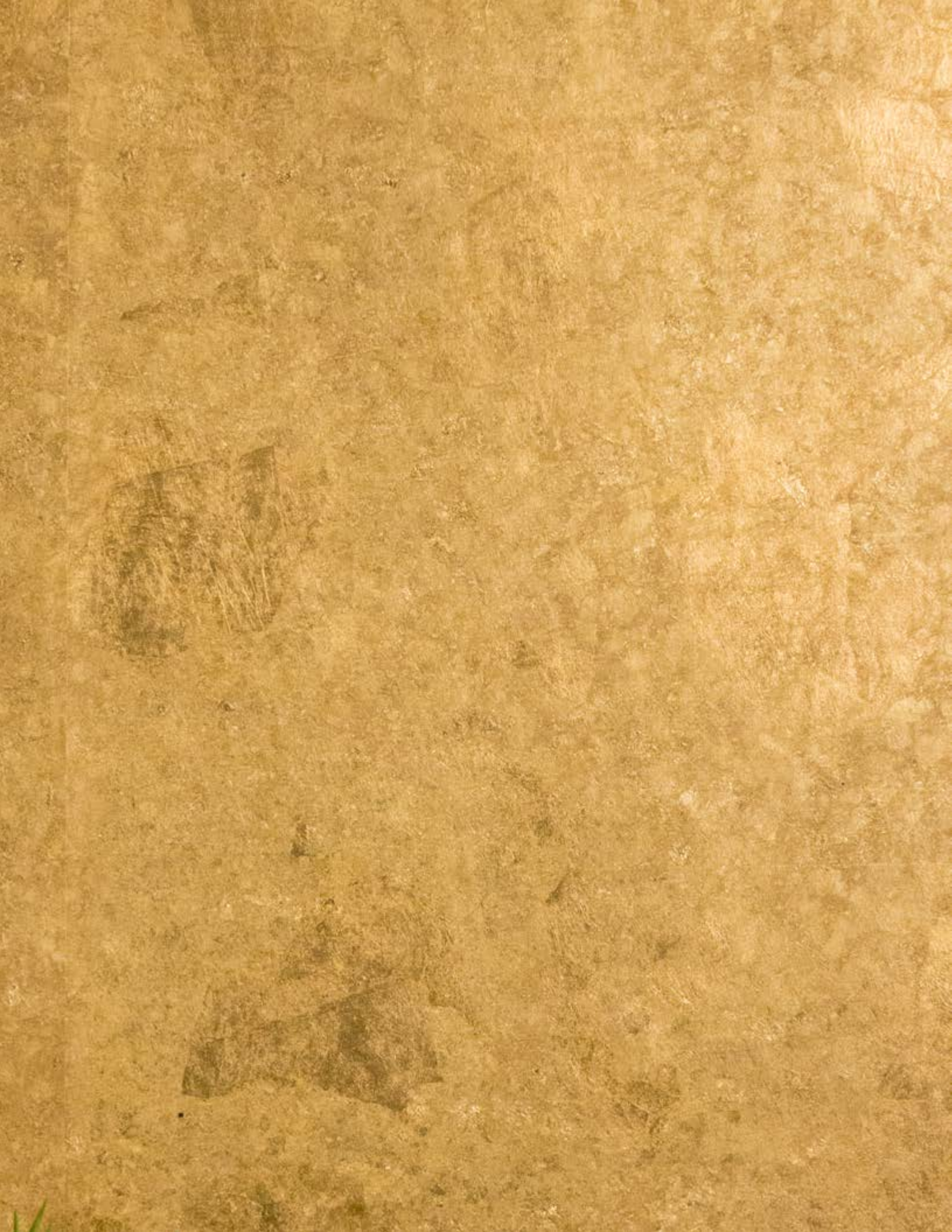
INSTALLATION METHOD

- Panels hung vertically, double-cut or trim on site
- Butt-seam tiles

PATTERN ORIENTATION

- Random pattern repeat







goodrich®

Goodrich Global
SINCE 1983

Crystalline Embellished

C O L L E C T I O N

VAHALLAN

HAND-PAINTED WALL COVERINGS

PRODUCT SPECIFICATION

FORMAT

Tiles

AVAILABLE SIZE

Rectangles

9" x 29"
18" x 29"
14" x 42"
14" x 49"

Squares

14.5" x 14.5"
29" x 29"

FIRE RATING

ASTM Class A (*Fire retardant must be requested*)

MINIMUM ORDER

50 sqft = 4.65 sqm
(*Custom lengths and colors available upon request*)

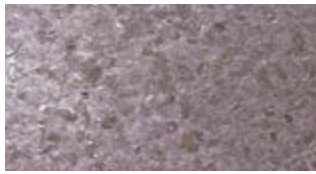
Our wallpapers are hand-painted to order by skilled artisans. Due to the manufacturing process, color variations are to be expected and add to the beauty and character of your finished wall.

TIPS ON HOW TO TAKE CARE OF YOUR WALLCOVERING

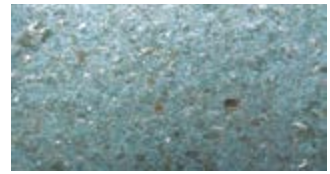
- Remove ordinary household dirt or smudges with mild soap and warm water.
- Clean with clean water and cleaner from top down with a sponge. When cleaning is completed, clean the wall again to remove any residual cleaner.
- Many cleaners will deteriorate with time and leave an amber stain on the wallcovering surface.
- Dry the surface with a soft, lint-free cloth or towel with a blotting action rather than rubbing.
- For a more difficult surface stain, use a stronger detergent according to the manufacturer's instructions.
- DO NOT use steel wool or powdered abrasive cleaner as it will cause undesirable appearance on the surface.
- DO NOT use active solvent-type cleaning preparations, such as nail polish remover, tar and bug removers, et cetera, because they will remove the surface paint and wallcovering's protective finish.



AMAZONITE
EMBELLISHED



AMETRINE
EMBELLISHED



AQUAMARINE
EMBELLISHED



BLACK MARBLE
EMBELLISHED



BLUE DIAMOND
EMBELLISHED



DIAMOND
EMBELLISHED



DIOPSIDE EMBELLISHED



HEMATITE II EMBELLISHED



JASPER EMBELLISHED



KYANITE EMBELLISHED



LAPIZ LAZULI EMBELLISHED



PYRITE EMBELLISHED



RUBY EMBELLISHED



SMOKEY QUARTZ
EMBELLISHED

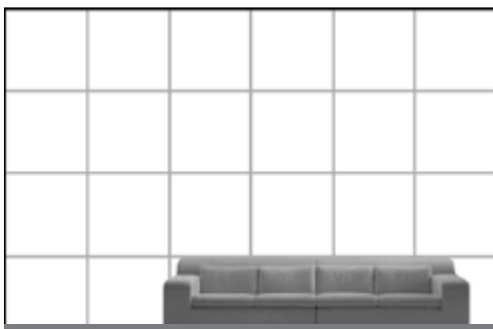


VICIS EMBELLISHED

INSTALLATION METHOD

■ Butt-seam tiles

PATTERN ORIENTATION



Square Tiles Stacked



Rectangle Tiles Horizontally Stacked





Goodrich Global
SINCE 1983

Ecliptic

COLLECTION

VAHALLAN

HAND-PAINTED WALL COVERINGS

PRODUCT SPECIFICATION

FORMAT

Full Panels

AVAILABLE SIZE

Butt-seam Panels

Width : 30"

Lengths : 8 - 15ft (Ordered in 1ft increments)

FIRE RATING

ASTM Class A

MINIMUM ORDER

50 sqft = 4.65 sqm

(Custom lengths and colors available upon request)

Our wallpapers are hand-painted to order by skilled artisans. Due to the manufacturing process, color variations are to be expected and add to the beauty and character of your finished wall.

TIPS ON HOW TO TAKE CARE OF YOUR WALLCOVERING

- Remove ordinary household dirt or smudges with mild soap and warm water.
- Clean with clean water and cleaner from top down with a sponge. When cleaning is completed, clean the wall again to remove any residual cleaner.
- Many cleaners will deteriorate with time and leave an amber stain on the wallcovering surface.
- Dry the surface with a soft, lint-free cloth or towel with a blotting action rather than rubbing.
- For a more difficult surface stain, use a stronger detergent according to the manufacturer's instructions.
- DO NOT use steel wool or powdered abrasive cleaner as it will cause undesirable appearance on the surface.
- DO NOT use active solvent-type cleaning preparations, such as nail polish remover, tar and bug removers, et cetera, because they will remove the surface paint and wallcovering's protective finish.



APHELION



APOLUNE



EQUINOX



OPUS



PERIHELION



POLOID



SAVOS



SOLSTICE

INSTALLATION METHOD

- Panels hung vertically, butt-seam panels

PATTERN ORIENTATION

- None







Goodrich Global
SINCE 1983

Element

C O L L E C T I O N

VAHALLAN

HAND-PAINTED WALL COVERINGS

PRODUCT SPECIFICATION

FORMAT

Tiles

AVAILABLE SIZE

Rectangles

9" x 29"
18" x 29"
14" x 42"
14" x 49"

Squares

14.5" x 14.5"
29" x 29"

FIRE RATING

ASTM Class B

MINIMUM ORDER

50 sqft = 4.65 sqm
(Custom lengths and colors available upon request)

Our wallpapers are hand-painted to order by skilled artisans. Due to the manufacturing process, color variations are to be expected and add to the beauty and character of your finished wall.

TIPS ON HOW TO TAKE CARE OF YOUR WALLCOVERING

- Remove ordinary household dirt or smudges with mild soap and warm water.
- Clean with clean water and cleaner from top down with a sponge. When cleaning is completed, clean the wall again to remove any residual cleaner.
- Many cleaners will deteriorate with time and leave an amber stain on the wallcovering surface.
- Dry the surface with a soft, lint-free cloth or towel with a blotting action rather than rubbing.
- For a more difficult surface stain, use a stronger detergent according to the manufacturer's instructions.
- DO NOT use steel wool or powdered abrasive cleaner as it will cause undesirable appearance on the surface.
- DO NOT use active solvent-type cleaning preparations, such as nail polish remover, tar and bug removers, et cetera, because they will remove the surface paint and wallcovering's protective finish.



ARTEMIS

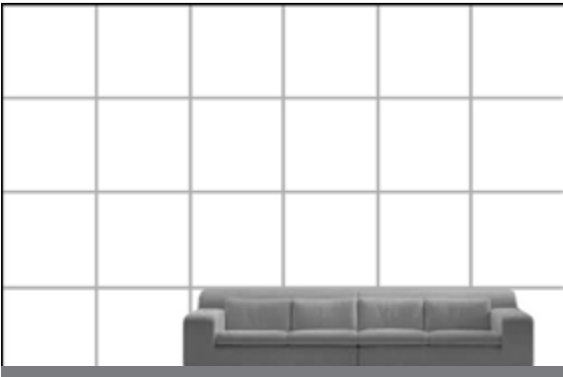


GALENA

INSTALLATION METHOD

- Butt-seam tiles
- Random pattern repeat

PATTERN ORIENTATION



Square Tiles Stacked



Rectangle Tiles Horizontally Stacked







Goodrich Global
SINCE 1983



E I K O
C O L L E C T I O N

VAHALLAN
HAND-PAINTED WALL COVERINGS

PRODUCT SPECIFICATION

FORMAT

Full Panels

AVAILABLE SIZE

Butt-seam Panels

Width : 29"

Lengths : 8 - 15ft (Ordered in 1ft increments)

FIRE RATING

ASTM Class A

MINIMUM ORDER

50 sqft = 4.65 sqm

(Custom lengths and colors available upon request)

Our wallpapers are hand-painted to order by skilled artisans. Due to the manufacturing process, color variations are to be expected and add to the beauty and character of your finished wall.

TIPS ON HOW TO TAKE CARE OF YOUR WALLCOVERING

- Remove ordinary household dirt or smudges with mild soap and warm water.
- Clean with clean water and cleaner from top down with a sponge. When cleaning is completed, clean the wall again to remove any residual cleaner.
- Many cleaners will deteriorate with time and leave an amber stain on the wallcovering surface.
- Dry the surface with a soft, lint-free cloth or towel with a blotting action rather than rubbing.
- For a more difficult surface stain, use a stronger detergent according to the manufacturer's instructions.
- DO NOT use steel wool or powdered abrasive cleaner as it will cause undesirable appearance on the surface.
- DO NOT use active solvent-type cleaning preparations, such as nail polish remover, tar and bug removers, et cetera, because they will remove the surface paint and wallcovering's protective finish.



ALKALI



CARLIN



LIDA



LORAY



OSINO



TONOPAH

INSTALLATION METHOD

- Butt-seam panels

PATTERN ORIENTATION

- 9.5" vertical pattern repeat







Goodrich Global
SINCE 1983



Enchanted

C O L L E C T I O N

VAHALLAN

HAND-PAINTED WALL COVERINGS

PRODUCT SPECIFICATION

FORMAT

Full Panels

AVAILABLE SIZE

Full Panels

Width : 30" (28" Recommended usable)

Lengths : 8 - 15ft (Ordered in 1ft increments)

FIRE RATING

ASTM Class A (*Fire retardant must be requested*)

MINIMUM ORDER

50 sqft = 4.65 sqm

(*Custom lengths and colors available upon request*)

Our wallpapers are hand-painted to order by skilled artisans. Due to the manufacturing process, color variations are to be expected and add to the beauty and character of your finished wall.

TIPS ON HOW TO TAKE CARE OF YOUR WALLCOVERING

- Remove ordinary household dirt or smudges with mild soap and warm water.
- Clean with clean water and cleaner from top down with a sponge. When cleaning is completed, clean the wall again to remove any residual cleaner.
- Many cleaners will deteriorate with time and leave an amber stain on the wallcovering surface.
- Dry the surface with a soft, lint-free cloth or towel with a blotting action rather than rubbing.
- For a more difficult surface stain, use a stronger detergent according to the manufacturer's instructions.
- DO NOT use steel wool or powdered abrasive cleaner as it will cause undesirable appearance on the surface.
- DO NOT use active solvent-type cleaning preparations, such as nail polish remover, tar and bug removers, et cetera, because they will remove the surface paint and wallcovering's protective finish.



ARCADIA



BLISS



CELESTE



EDEN



NOCTURNE



PHRENOS



SPELLBOUND



UTOPIA



XANADU

INSTALLATION METHOD

■ Panels hung vertically, double-cut or trim on site

PATTERN ORIENTATION



PATTERN C

The above diagram represents Pattern C installed. The panel itself will be installed vertically on the wall while the pattern within the panel will run horizontally.



PATTERN D

The above diagram represents Pattern D installed. The panel itself will be installed vertically on the wall and the pattern within the panel will also run vertically.





Goodrich Global
SINCE 1983



Enchanted Brushed

C O L L E C T I O N

VAHALLAN

HAND-PAINTED WALL COVERINGS

PRODUCT SPECIFICATION

FORMAT

Full Panels

AVAILABLE SIZE

Full Panels

Width : 30" untrimmed (28" Recommended usable)

Lengths : 8 - 15ft (Ordered in 1ft increments)

FIRE RATING

ASTM Class A

MINIMUM ORDER

50 sqft = 4.65 sqm

(Custom lengths and colors available upon request)

Our wallpapers are hand-painted to order by skilled artisans. Due to the manufacturing process, color variations are to be expected and add to the beauty and character of your finished wall.

TIPS ON HOW TO TAKE CARE OF YOUR WALLCOVERING

- Remove ordinary household dirt or smudges with mild soap and warm water.
- Clean with clean water and cleaner from top down with a sponge. When cleaning is completed, clean the wall again to remove any residual cleaner.
- Many cleaners will deteriorate with time and leave an amber stain on the wallcovering surface.
- Dry the surface with a soft, lint-free cloth or towel with a blotting action rather than rubbing.
- For a more difficult surface stain, use a stronger detergent according to the manufacturer's instructions.
- DO NOT use steel wool or powdered abrasive cleaner as it will cause undesirable appearance on the surface.
- DO NOT use active solvent-type cleaning preparations, such as nail polish remover, tar and bug removers, et cetera, because they will remove the surface paint and wallcovering's protective finish.



DUET



DUO



ENTHRAL



EUPHORIA



NIRVANA



ZION

INSTALLATION METHOD

- Panels hung vertically, double-cut or trim on site

PATTERN ORIENTATION



PATTERN C

The above diagram represents Pattern C installed. The panel itself will be installed vertically on the wall while the pattern within the panel will run horizontally.





Goodrich Global
SINCE 1983



F u r r o w
C O L L E C T I O N
VAHALLAN
HAND-PAINTED WALL COVERINGS

PRODUCT SPECIFICATION

FORMAT

Full Panels

AVAILABLE SIZE

Full Panels

Width : 30" (28" Recommended usable)

Lengths : 8 - 15ft (Ordered in 1ft increments)

FIRE RATING

ASTM Class A

MINIMUM ORDER

50 sqft = 4.65 sqm

(Custom lengths and colors available upon request)

Our wallpapers are hand-painted to order by skilled artisans. Due to the manufacturing process, color variations are to be expected and add to the beauty and character of your finished wall.

TIPS ON HOW TO TAKE CARE OF YOUR WALLCOVERING

- Remove ordinary household dirt or smudges with mild soap and warm water.
- Clean with clean water and cleaner from top down with a sponge. When cleaning is completed, clean the wall again to remove any residual cleaner.
- Many cleaners will deteriorate with time and leave an amber stain on the wallcovering surface.
- Dry the surface with a soft, lint-free cloth or towel with a blotting action rather than rubbing.
- For a more difficult surface stain, use a stronger detergent according to the manufacturer's instructions.
- DO NOT use steel wool or powdered abrasive cleaner as it will cause undesirable appearance on the surface.
- DO NOT use active solvent-type cleaning preparations, such as nail polish remover, tar and bug removers, et cetera, because they will remove the surface paint and wallcovering's protective finish.



PEARL



POLARIS



SILVER BIRCH

INSTALLATION METHOD

- Panels hung vertically, double-cut or trim on site

PATTERN ORIENTATION



PATTERN D

The above diagram represents Pattern D installed. The panel itself will be installed vertically on the wall and the pattern within the panel will also run vertically.





Goodrich Global
SINCE 1983



Gradiens

C O L L E C T I O N

VAHALLAN

HAND-PAINTED WALL COVERINGS

PRODUCT SPECIFICATION

FORMAT

Full Panels

AVAILABLE SIZE

Full Panels

Width : 30" (28" Recommended usable)

Lengths : 8 - 15ft (Ordered in 1ft increments)

FIRE RATING

ASTM Class A

MINIMUM ORDER

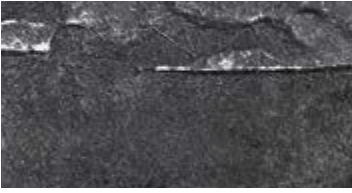
50 sqft = 4.65 sqm

(Custom lengths and colors available upon request)

Our wallpapers are hand-painted to order by skilled artisans. Due to the manufacturing process, color variations are to be expected and add to the beauty and character of your finished wall.

TIPS ON HOW TO TAKE CARE OF YOUR WALLCOVERING

- Remove ordinary household dirt or smudges with mild soap and warm water.
- Clean with clean water and cleaner from top down with a sponge. When cleaning is completed, clean the wall again to remove any residual cleaner.
- Many cleaners will deteriorate with time and leave an amber stain on the wallcovering surface.
- Dry the surface with a soft, lint-free cloth or towel with a blotting action rather than rubbing.
- For a more difficult surface stain, use a stronger detergent according to the manufacturer's instructions.
- DO NOT use steel wool or powdered abrasive cleaner as it will cause undesirable appearance on the surface.
- DO NOT use active solvent-type cleaning preparations, such as nail polish remover, tar and bug removers, et cetera, because they will remove the surface paint and wallcovering's protective finish.



TRACE



VESTIGE

INSTALLATION METHOD

- Panels hung vertically, double-cut or trim on site

PATTERN ORIENTATION

- 2.5" vertical pattern repeat







Merrick
COLLECTION
VAHALLAN
HAND-PAINTED WALL COVERINGS

PRODUCT SPECIFICATION

FORMAT

Full Panels

AVAILABLE SIZE

Full Panels

Width : 30" (28" Recommended usable)

Lengths : 8 - 15ft (Ordered in 1ft increments)

FIRE RATING

ASTM Class A

MINIMUM ORDER

50 sqft = 4.65 sqm

(Custom lengths and colors available upon request)

Our wallpapers are hand-painted to order by skilled artisans. Due to the manufacturing process, color variations are to be expected and add to the beauty and character of your finished wall.

TIPS ON HOW TO TAKE CARE OF YOUR WALLCOVERING

- Remove ordinary household dirt or smudges with mild soap and warm water.
- Clean with clean water and cleaner from top down with a sponge. When cleaning is completed, clean the wall again to remove any residual cleaner.
- Many cleaners will deteriorate with time and leave an amber stain on the wallcovering surface.
- Dry the surface with a soft, lint-free cloth or towel with a blotting action rather than rubbing.
- For a more difficult surface stain, use a stronger detergent according to the manufacturer's instructions.
- DO NOT use steel wool or powdered abrasive cleaner as it will cause undesirable appearance on the surface.
- DO NOT use active solvent-type cleaning preparations, such as nail polish remover, tar and bug removers, et cetera, because they will remove the surface paint and wallcovering's protective finish.



BELLAGIO



CASTANO



DOVER



PURE



SAVONNA



TIVOLI

INSTALLATION METHOD

- Panels hung vertically, double-cut or trim on site
- Random pattern repeat

PATTERN ORIENTATION



PATTERN D

The above diagram represents Pattern D installed. The panel itself will be installed vertically on the wall and the pattern within the panel will also run vertically.





Goodrich Global
SINCE 1983

M o f f a t
C O L L E C T I O N

VAHALLAN
HAND-PAINTED WALL COVERINGS

PRODUCT SPECIFICATION

FORMAT

Full Panels

AVAILABLE SIZE

Full Panels

Width : 30" (28" Recommended usable)

Lengths : up to 22ft (Ordered in 1ft increments)

FIRE RATING

ASTM Class A (upon request)

MINIMUM ORDER

50 sqft = 4.65 sqm

(Custom lengths and colors available upon request)

Our wallpapers are hand-painted to order by skilled artisans. Due to the manufacturing process, color variations are to be expected and add to the beauty and character of your finished wall.

TIPS ON HOW TO TAKE CARE OF YOUR WALLCOVERING

- Remove ordinary household dirt or smudges with mild soap and warm water.
- Clean with clean water and cleaner from top down with a sponge. When cleaning is completed, clean the wall again to remove any residual cleaner.
- Many cleaners will deteriorate with time and leave an amber stain on the wallcovering surface.
- Dry the surface with a soft, lint-free cloth or towel with a blotting action rather than rubbing.
- For a more difficult surface stain, use a stronger detergent according to the manufacturer's instructions.
- DO NOT use steel wool or powdered abrasive cleaner as it will cause undesirable appearance on the surface.
- DO NOT use active solvent-type cleaning preparations, such as nail polish remover, tar and bug removers, et cetera, because they will remove the surface paint and wallcovering's protective finish.



AXIAL



DURANGO



GREYSTONE



MYTON



NIGHTLANDS



PAGOSA



TODONAS



WILCOX

INSTALLATION METHOD

- Panels hung horizontally (railroaded), double-cut or trim on site
- 4-5" vertical pattern repeat

PATTERN ORIENTATION



PATTERN D

The above diagram represents the pattern hung horizontally or railroaded.





Goodrich Global
SINCE 1983



Narmada

C O L L E C T I O N

VAHALLAN

HAND-PAINTED WALL COVERINGS

PRODUCT SPECIFICATION

FORMAT

Tiles

AVAILABLE SIZE

Rectangles

9" x 29"
18" x 29"
14" x 42"
14" x 49"

Squares

14.5" x 14.5"
29" x 29"

FIRE RATING

ASTM Class A

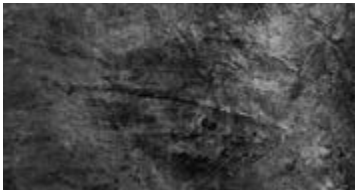
MINIMUM ORDER

50 sqft = 4.65 sqm
(Custom lengths and colors available upon request)

Our wallpapers are hand-painted to order by skilled artisans. Due to the manufacturing process, color variations are to be expected and add to the beauty and character of your finished wall.

TIPS ON HOW TO TAKE CARE OF YOUR WALLCOVERING

- Remove ordinary household dirt or smudges with mild soap and warm water.
- Clean with clean water and cleaner from top down with a sponge. When cleaning is completed, clean the wall again to remove any residual cleaner.
- Many cleaners will deteriorate with time and leave an amber stain on the wallcovering surface.
- Dry the surface with a soft, lint-free cloth or towel with a blotting action rather than rubbing.
- For a more difficult surface stain, use a stronger detergent according to the manufacturer's instructions.
- DO NOT use steel wool or powdered abrasive cleaner as it will cause undesirable appearance on the surface.
- DO NOT use active solvent-type cleaning preparations, such as nail polish remover, tar and bug removers, et cetera, because they will remove the surface paint and wallcovering's protective finish.



BUCORA



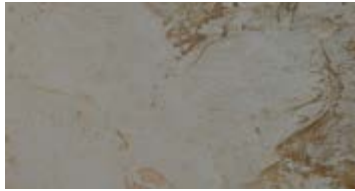
CALACATTA



DALATI



KATUBA



MARFIL



MARIANNA



PARIAN



SKYROS

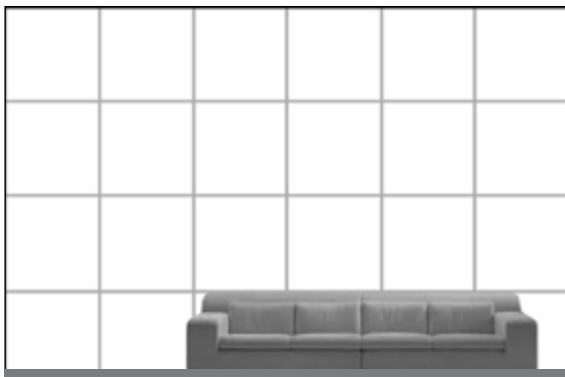


VERONA

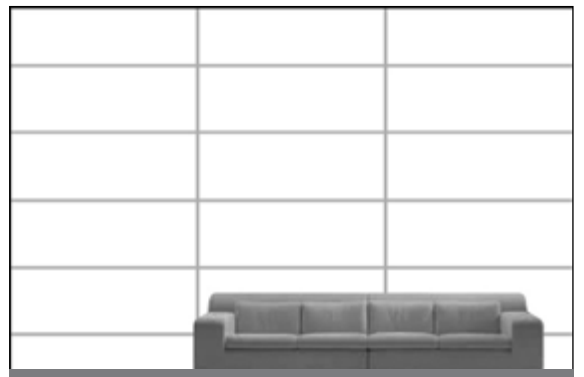
INSTALLATION METHOD

■ Butt-seam tiles

PATTERN ORIENTATION



Square Tiles Stacked



Rectangle Tiles Horizontally Stacked





Goodrich Global
SINCE 1983



Seychelles

COLLECTION

VAHALLAN

HAND-PAINTED WALL COVERINGS

PRODUCT SPECIFICATION

FORMAT

Full Panels

AVAILABLE SIZE

Full Panels

Width : 30" (28" Recommended usable)

Lengths : 8 - 15ft (Ordered in 1ft increments)

FIRE RATING

ASTM Class A

MINIMUM ORDER

50 sqft = 4.65 sqm

(Custom lengths and colors available upon request)

Our wallpapers are hand-painted to order by skilled artisans. Due to the manufacturing process, color variations are to be expected and add to the beauty and character of your finished wall.

TIPS ON HOW TO TAKE CARE OF YOUR WALLCOVERING

- Remove ordinary household dirt or smudges with mild soap and warm water.
- Clean with clean water and cleaner from top down with a sponge. When cleaning is completed, clean the wall again to remove any residual cleaner.
- Many cleaners will deteriorate with time and leave an amber stain on the wallcovering surface.
- Dry the surface with a soft, lint-free cloth or towel with a blotting action rather than rubbing.
- For a more difficult surface stain, use a stronger detergent according to the manufacturer's instructions.
- DO NOT use steel wool or powdered abrasive cleaner as it will cause undesirable appearance on the surface.
- DO NOT use active solvent-type cleaning preparations, such as nail polish remover, tar and bug removers, et cetera, because they will remove the surface paint and wallcovering's protective finish.



BALEINE



BELAIR



KERLAN



LUNAY



MAHEY



ROYALE



TERNAY

INSTALLATION METHOD

■ Panels hung vertically, double-cut or trim on site

PATTERN ORIENTATION



PATTERN C

The above diagram represents Pattern C installed. The panel itself will be installed vertically on the wall while the pattern within the panel will run horizontally.



PATTERN D

The above diagram represents Pattern D installed. The panel itself will be installed vertically on the wall and the pattern within the panel will also run vertically.





Goodrich Global
SINCE 1983

Tarrant

C O L L E C T I O N

VAHALLAN

HAND-PAINTED WALL COVERINGS

PRODUCT SPECIFICATION

FORMAT

Full Panels

AVAILABLE SIZE

Full Panels

Width : 30" (28" Recommended usable)

Lengths : 8 - 15ft (Ordered in 1ft increments)

FIRE RATING

ASTM Class A

MINIMUM ORDER

50 sqft = 4.65 sqm

(Custom lengths and colors available upon request)

Our wallpapers are hand-painted to order by skilled artisans. Due to the manufacturing process, color variations are to be expected and add to the beauty and character of your finished wall.

TIPS ON HOW TO TAKE CARE OF YOUR WALLCOVERING

- Remove ordinary household dirt or smudges with mild soap and warm water.
- Clean with clean water and cleaner from top down with a sponge. When cleaning is completed, clean the wall again to remove any residual cleaner.
- Many cleaners will deteriorate with time and leave an amber stain on the wallcovering surface.
- Dry the surface with a soft, lint-free cloth or towel with a blotting action rather than rubbing.
- For a more difficult surface stain, use a stronger detergent according to the manufacturer's instructions.
- DO NOT use steel wool or powdered abrasive cleaner as it will cause undesirable appearance on the surface.
- DO NOT use active solvent-type cleaning preparations, such as nail polish remover, tar and bug removers, et cetera, because they will remove the surface paint and wallcovering's protective finish.



ARLINGTON



BENBROOK



CROWLEY



HALTOM



HASLET



PANTEGO

INSTALLATION METHOD

■ Panels hung vertically, double-cut or trim on site

PATTERN ORIENTATION



PATTERN C

The above diagram represents Pattern C installed. The panel itself will be installed vertically on the wall while the pattern within the panel will run horizontally.



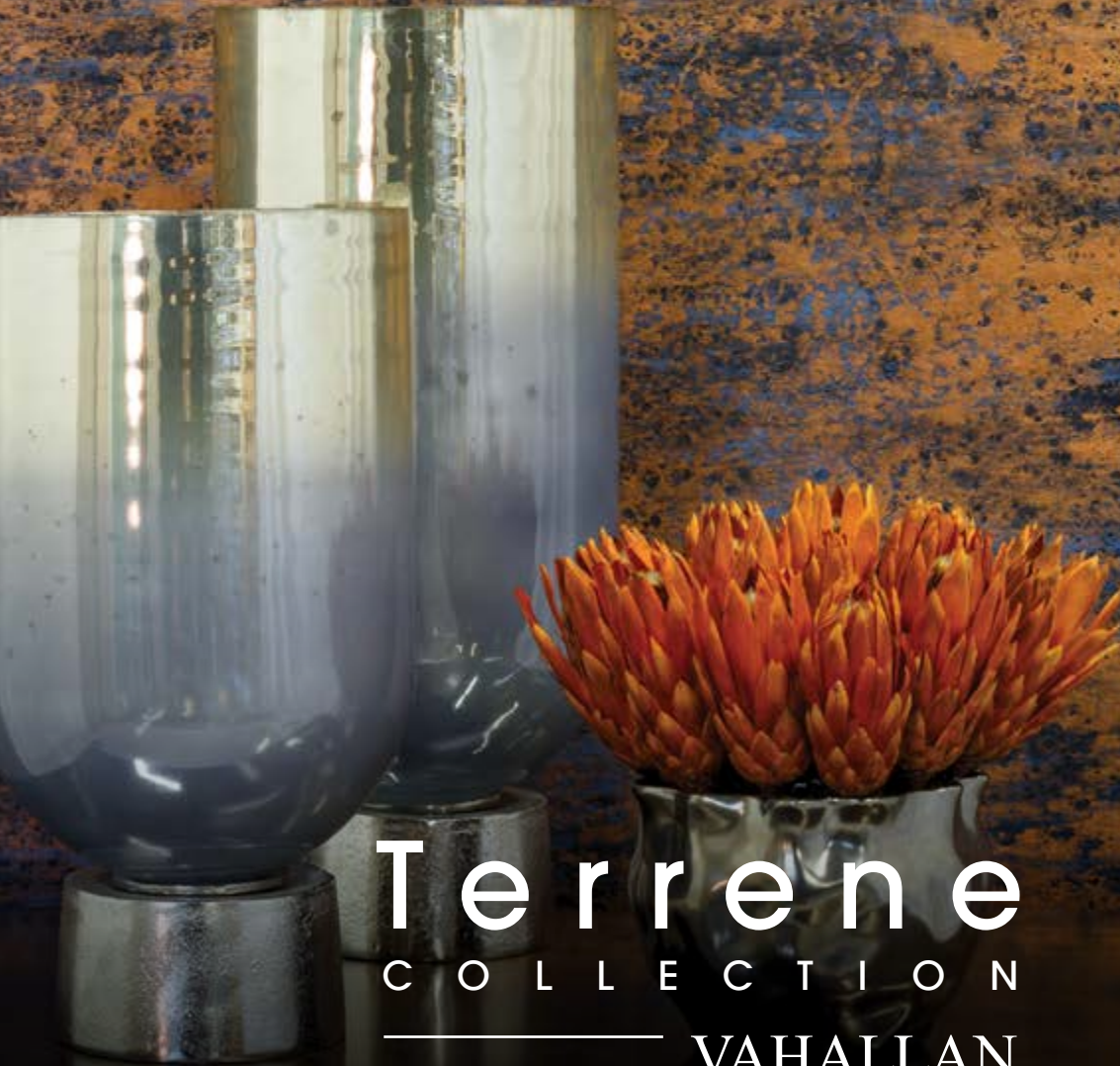
PATTERN D

The above diagram represents Pattern D installed. The panel itself will be installed vertically on the wall and the pattern within the panel will also run vertically.





Goodrich Global
SINCE 1983



Terrene
COLLECTION

VAHALLAN
HAND-PAINTED WALL COVERINGS

PRODUCT SPECIFICATION

FORMAT

Full Panels

AVAILABLE SIZE

Full Panels

Width : 30" untrimmed (28" Recommended usable)

Lengths : 8 - 15ft (Ordered in 1ft increments)

FIRE RATING

ASTM Class A

MINIMUM ORDER

50 sqft = 4.65 sqm

(Custom lengths and colors available upon request)

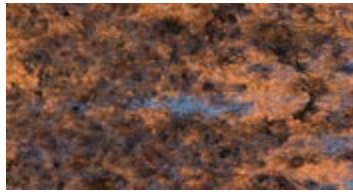
Our wallpapers are hand-painted to order by skilled artisans. Due to the manufacturing process, color variations are to be expected and add to the beauty and character of your finished wall.

TIPS ON HOW TO TAKE CARE OF YOUR WALLCOVERING

- Remove ordinary household dirt or smudges with mild soap and warm water.
- Clean with clean water and cleaner from top down with a sponge. When cleaning is completed, clean the wall again to remove any residual cleaner.
- Many cleaners will deteriorate with time and leave an amber stain on the wallcovering surface.
- Dry the surface with a soft, lint-free cloth or towel with a blotting action rather than rubbing.
- For a more difficult surface stain, use a stronger detergent according to the manufacturer's instructions.
- DO NOT use steel wool or powdered abrasive cleaner as it will cause undesirable appearance on the surface.
- DO NOT use active solvent-type cleaning preparations, such as nail polish remover, tar and bug removers, et cetera, because they will remove the surface paint and wallcovering's protective finish.



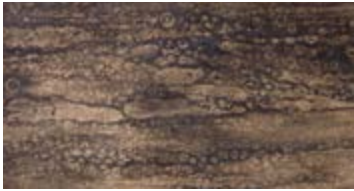
CARAVAGGIO



DEPERO



RAPHAEL



TREVISO



VASARI



VECCHIETTA



VISENTINI



ZUCCARI

INSTALLATION METHOD

■ Panels hung vertically, double-cut or trim on site

PATTERN ORIENTATION



PATTERN C

The above diagram represents Pattern C installed. The panel itself will be installed vertically on the wall while the pattern within the panel will run horizontally.





Goodrich Global
SINCE 1983

Traccia
COLLECTION
VAHALLAN
HAND-PAINTED WALL COVERINGS

PRODUCT SPECIFICATION

FORMAT

Full Panels
Tiles

AVAILABLE SIZE

Full Panels

Width : 30" (28" Recommended usable)
Lengths : 8 - 15ft (Ordered in 1ft increments)

Rectangles

9" x 29"
18" x 29"
14" x 42"
14" x 49"

Squares

14.5" x 14.5"
29" x 29"

FIRE RATING

ASTM Class A

MINIMUM ORDER

50 sqft = 4.65 sqm
(Custom lengths and colors available upon request)

Our wallpapers are hand-painted to order by skilled artisans. Due to the manufacturing process, color variations are to be expected and add to the beauty and character of your finished wall.

TIPS ON HOW TO TAKE CARE OF YOUR WALLCOVERING

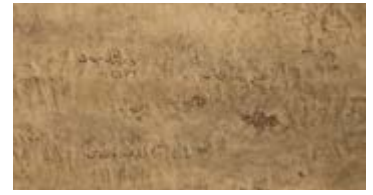
- Remove ordinary household dirt or smudges with mild soap and warm water.
- Clean with clean water and cleaner from top down with a sponge. When cleaning is completed, clean the wall again to remove any residual cleaner.
- Many cleaners will deteriorate with time and leave an amber stain on the wallcovering surface.
- Dry the surface with a soft, lint-free cloth or towel with a blotting action rather than rubbing.
- For a more difficult surface stain, use a stronger detergent according to the manufacturer's instructions.
- DO NOT use steel wool or powdered abrasive cleaner as it will cause undesirable appearance on the surface.
- DO NOT use active solvent-type cleaning preparations, such as nail polish remover, tar and bug removers, et cetera, because they will remove the surface paint and wallcovering's protective finish.



BRADDOCK



CAROLINA



GOBI



MELANGE



TALESIN



VEYDA II

INSTALLATION METHOD

- Panels hung vertically, double-cut or trim on site
- Butt-seam tiles

PATTERN ORIENTATION

30"

Specified Length



Square Tiles Stacked



Rectangle Tiles Horizontally Stacked

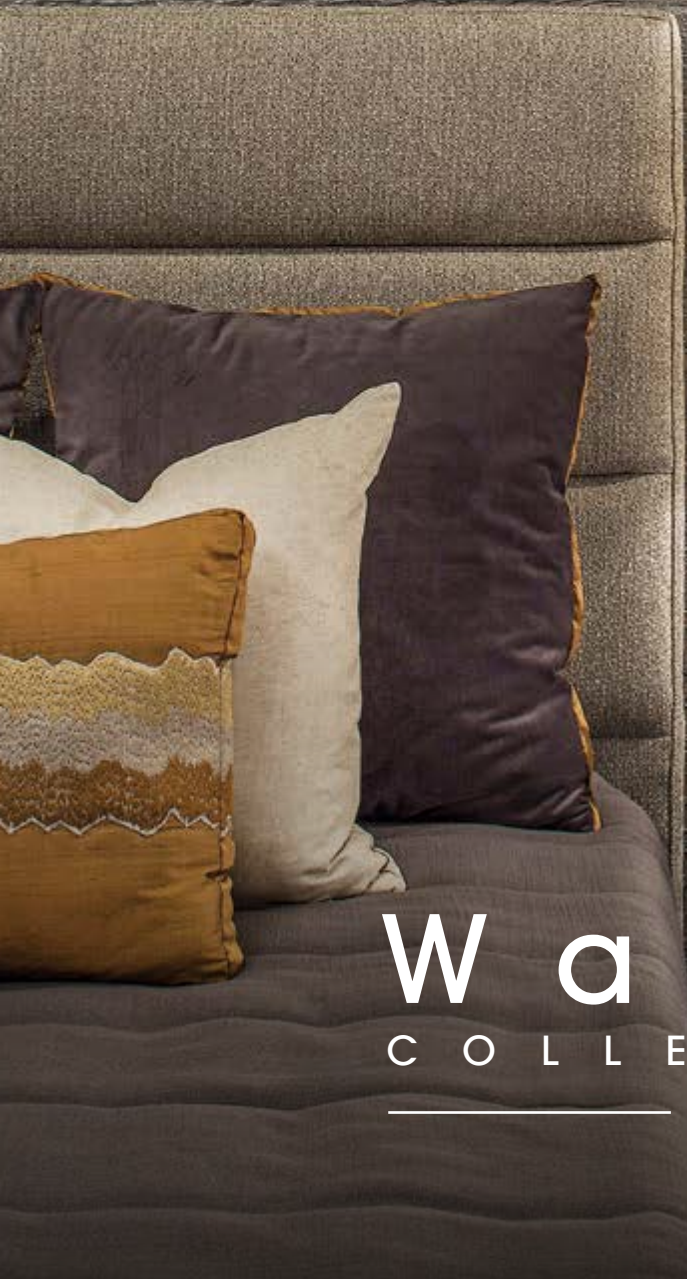
PATTERN C

The above diagram represents Pattern C installed. The panel itself will be installed vertically on the wall while the pattern within the panel will run horizontally.





Goodrich Global
SINCE 1983



W a v e s
C O L L E C T I O N
VAHALLAN
HAND-PAINTED WALL COVERINGS

PRODUCT SPECIFICATION

FORMAT

Full Panels

AVAILABLE SIZE

Full Panels

Width : 30" untrimmed (28" Recommended usable)

Lengths : up to 22ft (Ordered in 1ft increments)

FIRE RATING

ASTM Class B

MINIMUM ORDER

50 sqft = 4.65 sqm

(Custom lengths and colors available upon request)

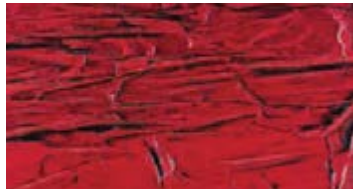
Our wallpapers are hand-painted to order by skilled artisans. Due to the manufacturing process, color variations are to be expected and add to the beauty and character of your finished wall.

TIPS ON HOW TO TAKE CARE OF YOUR WALLCOVERING

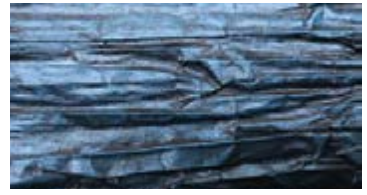
- Remove ordinary household dirt or smudges with mild soap and warm water.
- Clean with clean water and cleaner from top down with a sponge. When cleaning is completed, clean the wall again to remove any residual cleaner.
- Many cleaners will deteriorate with time and leave an amber stain on the wallcovering surface.
- Dry the surface with a soft, lint-free cloth or towel with a blotting action rather than rubbing.
- For a more difficult surface stain, use a stronger detergent according to the manufacturer's instructions.
- DO NOT use steel wool or powdered abrasive cleaner as it will cause undesirable appearance on the surface.
- DO NOT use active solvent-type cleaning preparations, such as nail polish remover, tar and bug removers, et cetera, because they will remove the surface paint and wallcovering's protective finish.



AUTUMN HARBOR



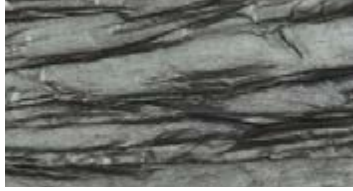
CRIMSON TIDE



DEEP BLUE



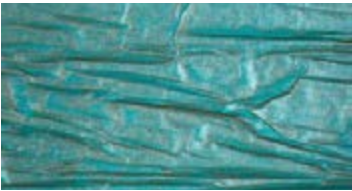
DRIFTWOOD



SHOAL



STORMY SKY



SUMMER SWELL



WARM SAND



WHITE CAP

INSTALLATION METHOD

- Panels hung horizontally (railroaded), double-cut or trim on site

PATTERN ORIENTATION



PATTERN D

The above diagram represents the pattern hung horizontally or railroaded.



