

Specifications



Goodrich Global
SINCE 1983

DESIGN

Size	24" x 24" (.609 m x .609 m)
Surface Appearance	Loop
Fiber Type	ColorStrand Nylon
Dye Method	Solution Dyed
Installation Methods	Monolithic / Quarter Turn / Multi-Directional

PERFORMANCE

Construction	Tufted
Gauge	1/12" (47.00 rows per 10cm)
Stain Release Technology	Permanent, Built into the Fiber
Soil Release Technology	EcoSentry Soil Protection
Backing Material	EcoFlex™ ICT
Flammability	ASTM E 648 - Class 1 (Glue Down)
Smoke Density	ASTM E 662 - Less than 450
Static Propensity	AATCC - 134 Under 3.5 KV

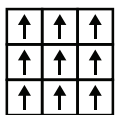
SUSTAINABILITY

Certification	Declare
Indoor Air Quality	Green Label Plus Certified #1171
Carbon	Net Positive Carbon (Neutral +5%)
Water	Net Positive Water (Neutral +5%)

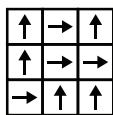
SERVICE

Warranties	Lifetime Limited Carpet Tile Warranty
------------	---------------------------------------

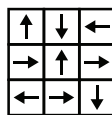
INSTALLATION METHODS



monolithic



quarter turn



multi-directional

**Carpet tile with various and random pattern are mixed in the same box.